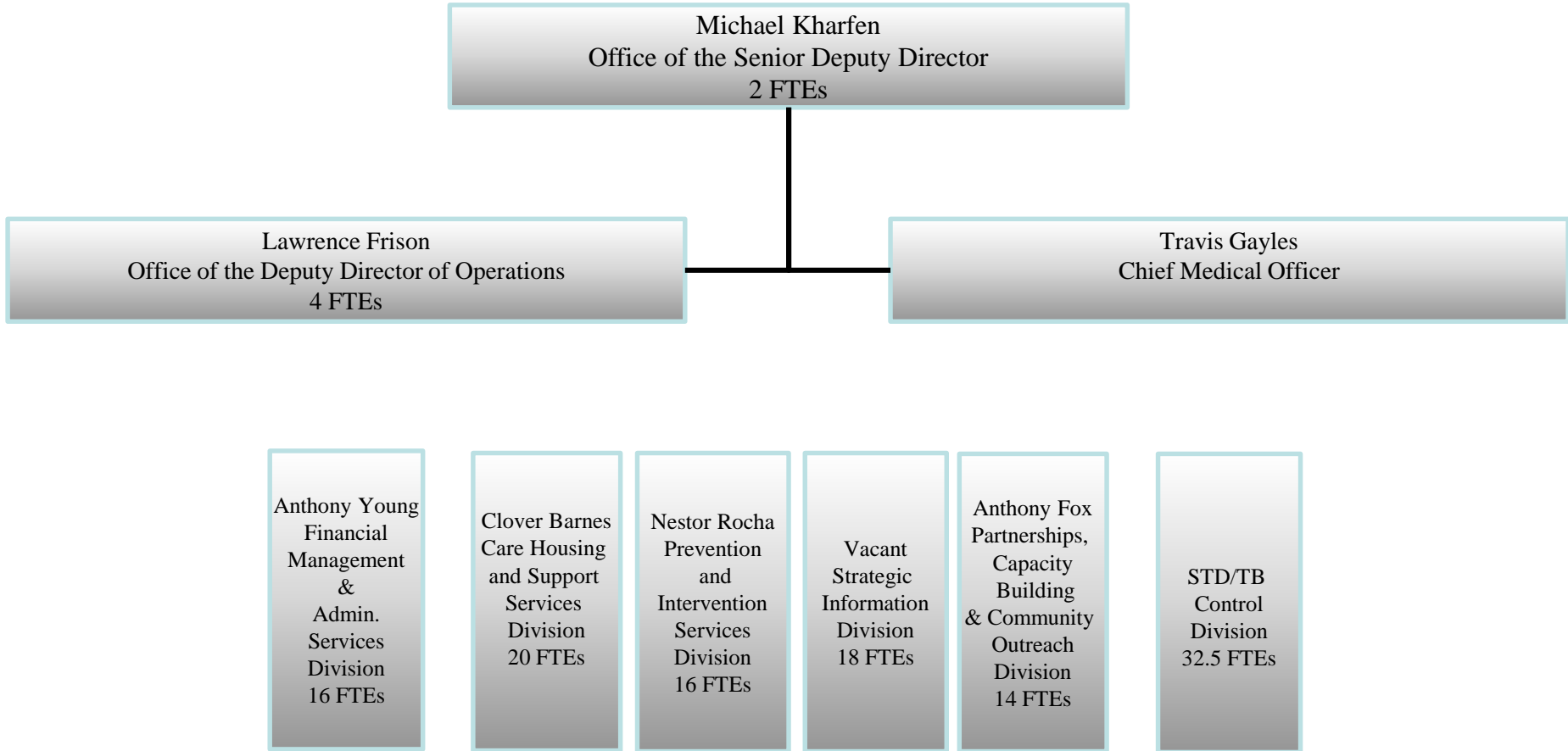


# HIV/AIDS, Hepatitis, STD and TB Administration Organizational Structure

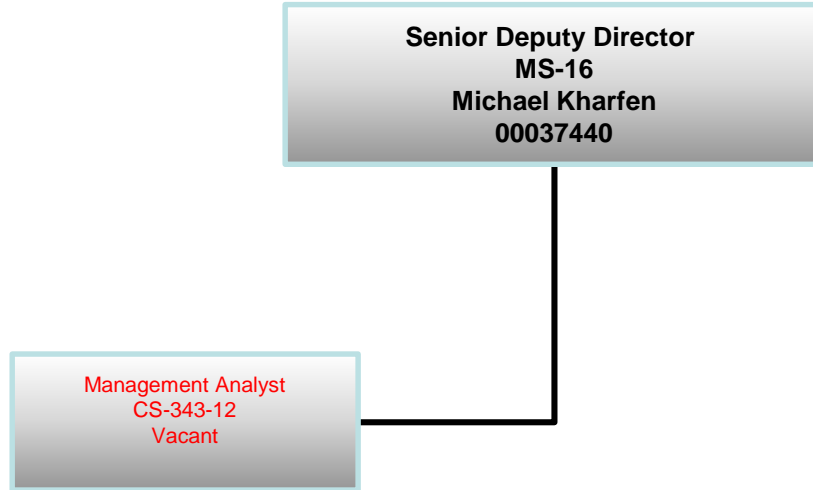
**122.5 FTEs**



# Office of the Senior Deputy Director (2 FTE)

Senior Deputy Director  
MS-16  
Michael Kharfen  
00037440

Management Analyst  
CS-343-12  
Vacant



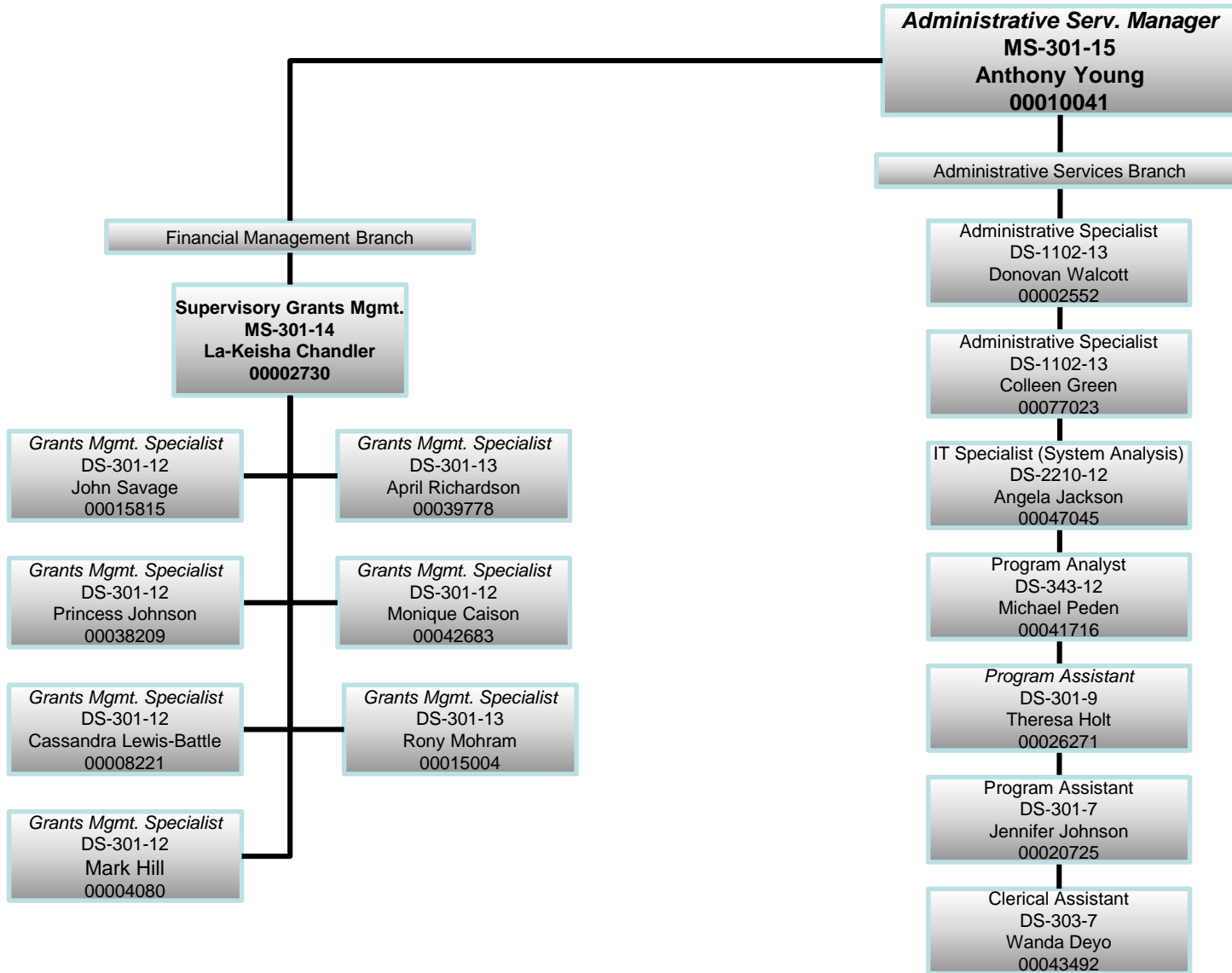
# Office of the Deputy Director of Operations

(4 FTE)



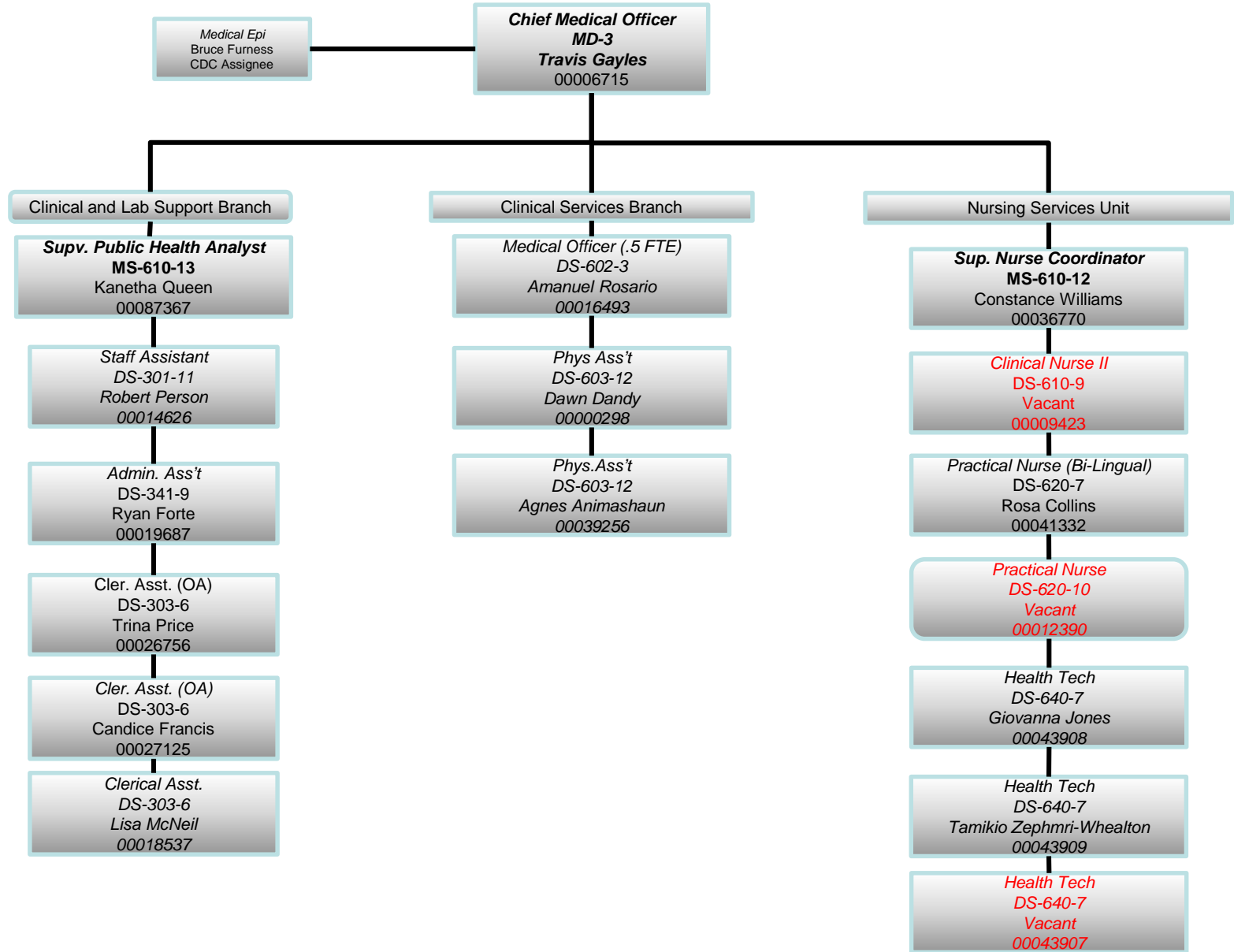
# Financial Management & Administrative Services Division

(16 FTE)



# STD/TB Control Division

(32.5 FTE total) Page 1 - STD & TB Clinical Services



# STD/TB Control Division

## Page 2 -TB & STD Outreach and Investigation Services

Asst Prog Mgr & Capacity  
and Coord Unit Manager  
Colleen Crowley  
CDC Assignee

**Chief Medical Officer**  
**MD-3**  
**Travis Gayles**  
00006715

**Field Ops Coordinator**  
**Shanica Alexander**  
CDC Employee

### Commun. Outreach & Education Branch

**Supv. Pub. Health Anal.**  
**MS-301-13**  
**Veronica Whycoff**  
00039683

*Pub. Health Srv. Spec.*  
DS-601-12  
Kenya Troutman  
00047391

*Pub. Health Srv. Spec.*  
DS-601--12  
Maria Alfonso  
00012181

*Pub. Health Srv. Spec.*  
DS-601-11  
Mariel Edge  
00016684

*Investigator*  
DS-1810-11  
Danielle Naji-Allah  
00038360

*Investigator*  
DS-1810-11  
Minerva Lazo  
00007027

*Investigator*  
DS-1810-11  
Janice Duncan  
00024432

### Partner and Linkage Services Branch

**First Line Supv**  
**CDC Employee**  
**Sharon Stone**

*Investigator*  
DS-1810-11  
Glasford Earlington  
00000763

*Investigator*  
DS-1810-11  
Quinae Allen  
00024840

*Investigator*  
DS-1810-11  
Herman Jones-EI  
00015837

*Investigator*  
DS-1810-11  
Abdul Mansaray  
00003545

*Investigator*  
DS-1810-11  
Jessica Thomas  
00002957

*Investigator*  
DS-1810-11  
Lavelle Prysock  
0003308

### Surveillance and Outreach Branch

*Investigator*  
DS-1810-11  
Arthur Lemmon  
00023984

*Investigator*  
DS-1810-11  
Olivia Norris  
00020418

*Public Health Analyst*  
DS-301-11  
Theresa Waddy  
00088353

# Care, Housing and Support Services Division (20 FTE)

**Division Chief**  
MSS-301-15  
Clover Barnes  
00040543

*Program Coordinator*  
DS-301-12  
T'Wana Holmes  
00006061

*Staff Assistant*  
DS-301-9  
Kim Green  
00040747

*Public Health Analyst*  
CS-685-13  
Vacant  
00088344

ADAP & Medicaid Assistance Branch

Monitoring & Evaluation Branch

Care & Support Services Branch

**Spvy. Pub. Health Analyst**  
MS-685-14  
Tayiana Roussell  
00040058

**Deputy Bureau Chief**  
**Spv. Pub. Health Analyst**  
MS-685-14  
Lena Lago  
00046416

**Spvy. Pub. Health Analyst**  
MS-685-14  
Vacant  
00040989

*Program Specialist*  
DS-601-13  
Damber Gurung  
00077358

*Pharmacist*  
CS-660-14  
Chibuzor Okoro  
00087654

*Program Specialist*  
DS-301-12  
Robin Driver  
00088332

*Pub. Health Analyst*  
CS-685-12  
Bethlemem Tadess  
00088191

*Program Assistant*  
DS-301-11  
Nelly Otieno  
00020057

*Pub. Health Analyst*  
DS-685-13  
Luau Montealgre  
00001610

*Quality Asses. Spec.*  
DS-301-13  
Justin Britanik  
00075474

*Pub. Health Analyst*  
DS-685-12  
Wajaha Akhtar  
00013936

*Pub. Health Analyst*  
DS-685-13  
Vacant  
00039853

*Pub. Health Analyst*  
DS-685-13  
Ebony Fortune  
00041836

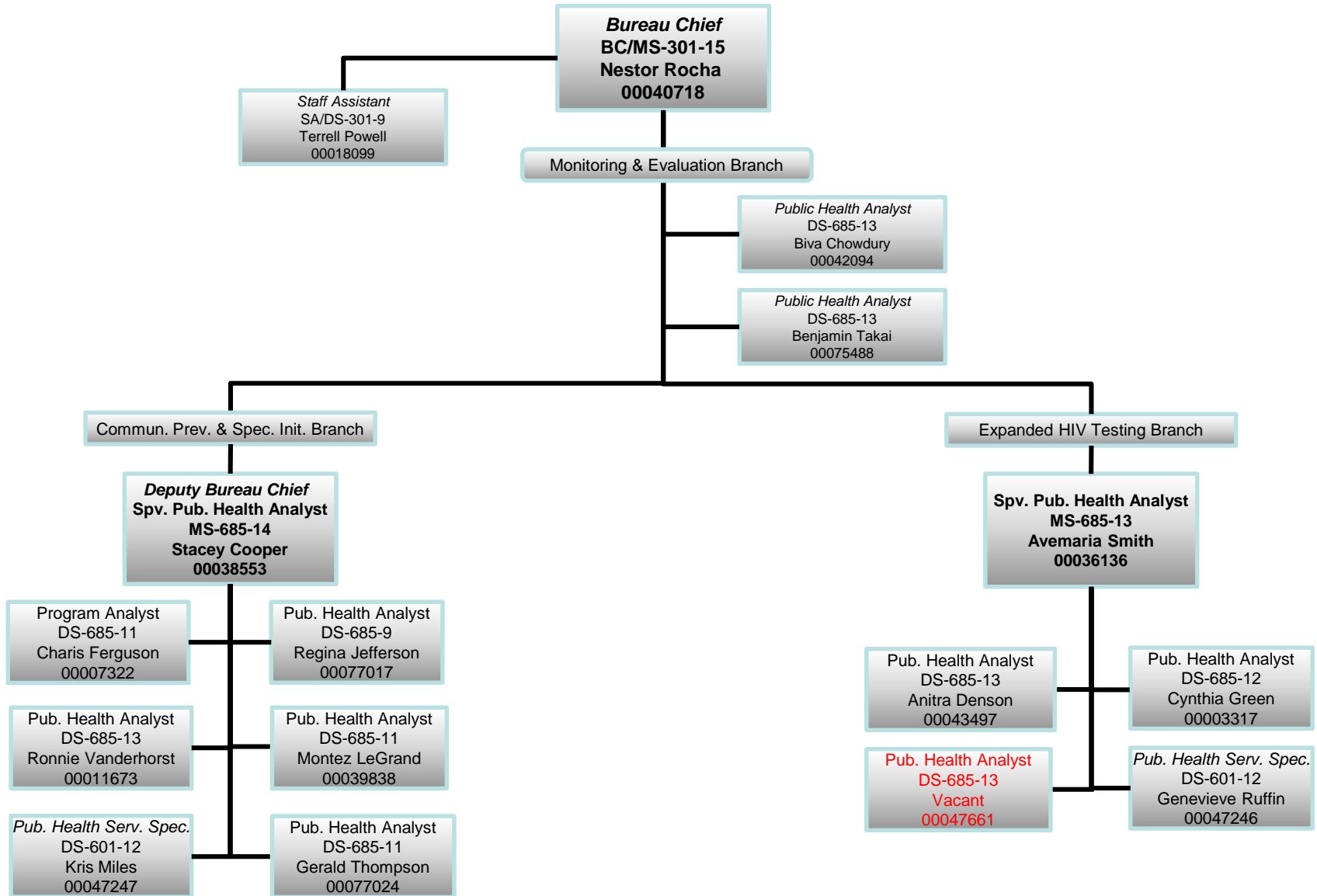
*Pub. Health Analyst*  
DS-685-13  
Ivan Eaton  
00041834

*Pub. Health Analyst*  
DS-685-13  
Christie Olejemeh  
00046530

*Pub. Health Analyst*  
DS-685-13  
Trammell Walters  
00041835

# Prevention and Intervention Services Division

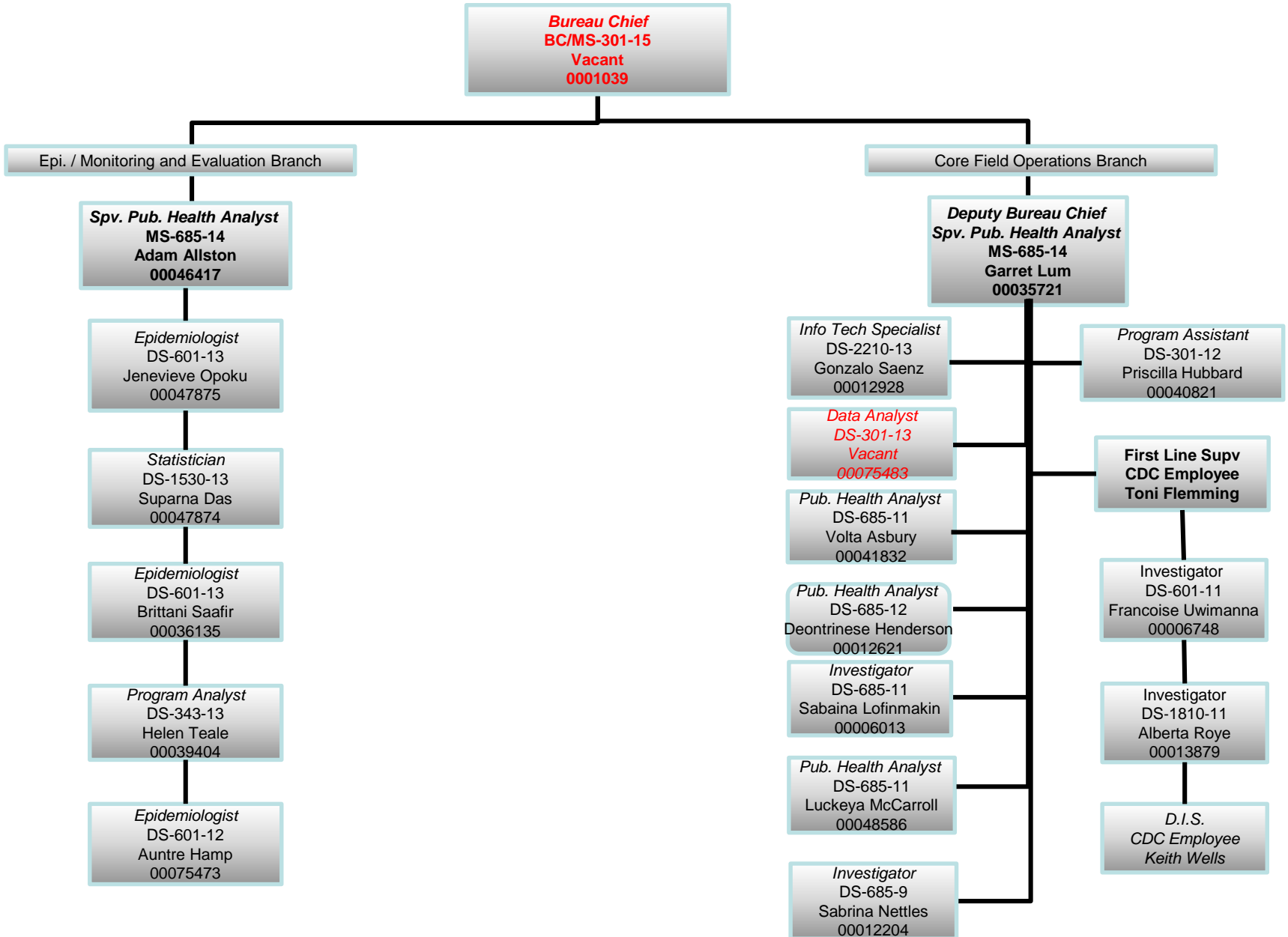
(16 FTE)





# Strategic Information Division

(18 FTE)



# Partnerships, Capacity Building, and Community Outreach Division (14 FTE)

**Supervisory Public Health Analyst**  
MS-685-14  
Anthony Fox  
00039224

## HIV Housing Assistance Branch

*Housing Coordinator*  
CS-301-13  
Sherita Grant  
00088126

*Public Health Analyst*  
CS-301-13  
Vacant  
00088127

*Housing Prog. Spec.*  
DS-301-11  
Patrice Bailey  
00046718

## Demonstration Branch

*Supv. Pub. Health Advisor*  
MS-685-13  
Vacant  
00087651

*Pub. Health Serv. Spec.*  
DS-601-11  
Vacant  
00087652

*Data Analyst*  
DS-601-12  
Vacant  
00087655

*Pub. Health Serv. Spec.*  
DS-601-9  
Vacant  
00087806

## Planning and Communications Branch

*Public Health Analyst*  
DS-685-13  
Gail Hansen  
00002959

*Program Assistant*  
DS-301-11  
Jeffrey Coleman  
00005684

*Pub. Health Analyst*  
DS-685-11  
Andrea Thomas  
00075617

## Community and Capacity Building Branch

*Spvy. Public Health Analyst*  
MS-685-13  
Kaleef Morse  
00000793

*Program Coordinator*  
CS-301-13  
Lamont Clark  
00077356

*Administrative Specialist*  
CS-301-11  
Alexis Myers  
00077357