

53. Please provide the monthly attrition rates for each month in FY14 and FY15, to date.

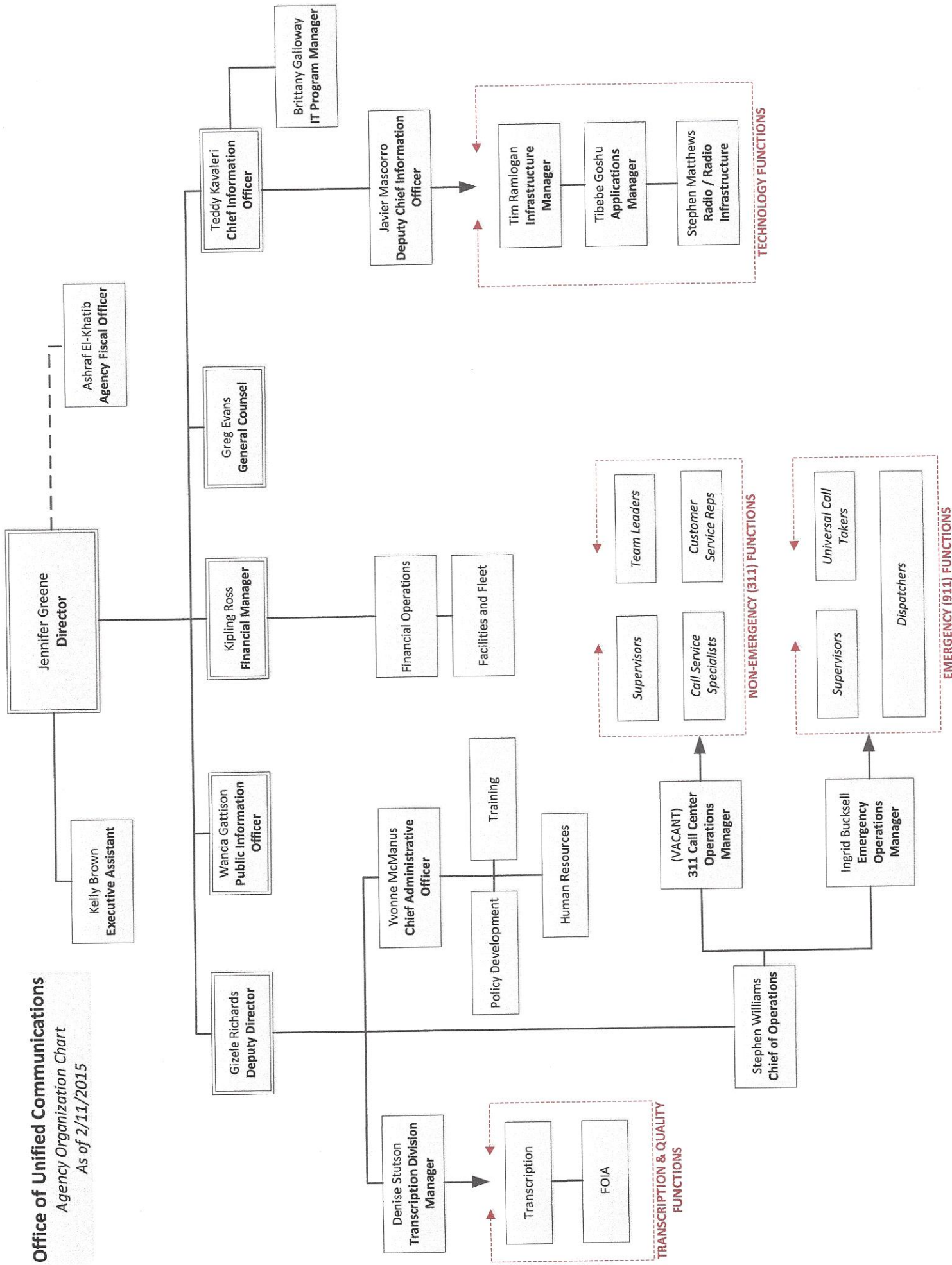
Month	13-Oct	13-Nov	13-Dec	14-Jan	14-Feb	14-Mar	14-Apr	14-May	14-Jun	14-Jul	14-Aug	14-Sep	14-Oct	14-Nov	14-Dec	15-Jan
Separations	1	1	4	1	1	2	2	1.5	3	1	4	3	3.5	3	1	3
Employees	317.3	316.3	312.3	311.3	310.3	308.3	306.3	304.8	301.8	300.8	296.8	293.8	290.3	287.3	286.3	305.3
Attrition Rate	0.315159	0.316156	1.28082	0.321234	0.322269	0.648719	0.652955	0.492126	0.994036	0.332447	1.347709	1.021103	1.205649	1.044205	0.349284	1.058948

Sincerely,



Jennifer Greene  
Director

**Office of Unified Communications**  
 Agency Organization Chart  
 As of 2/11/2015

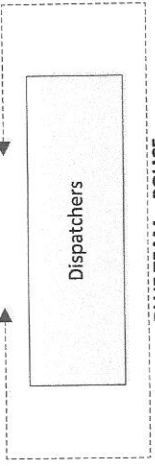
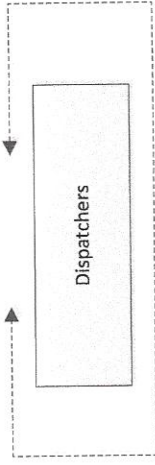
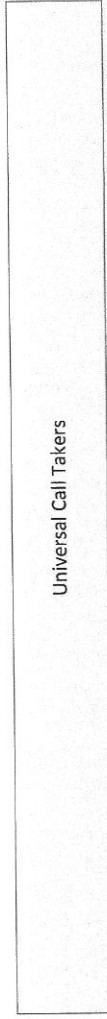
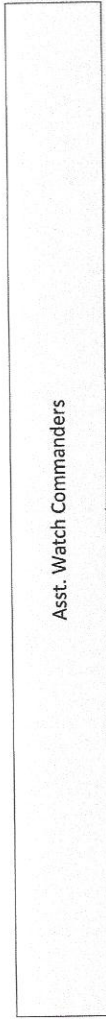
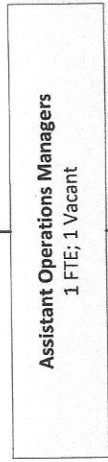
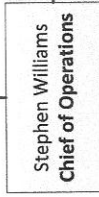
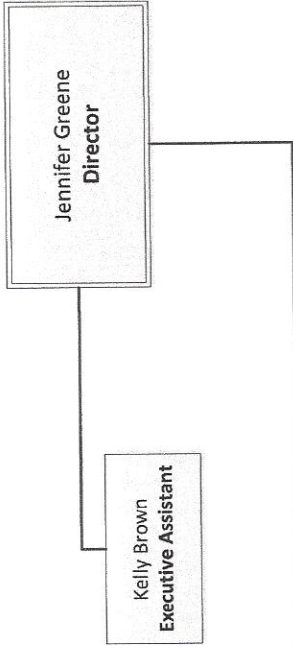


**Office of Unified Communications**  
 Performance Division Organization Chart  
**EMERGENCY (911) OPERATIONS**

**DIVISION**

As of 2/11/2015

**196 FTEs, 17 VACANCIES**



**Asst. Watch Commanders**  
14 FTEs; 2 Vacant

**Universal Call Takers**  
75 FTEs; 8 Vacant

**Dispatchers**  
105 FTEs, 6 Vacant

Emergency Operations

**EMERGENCY (911) OPERATIONS**

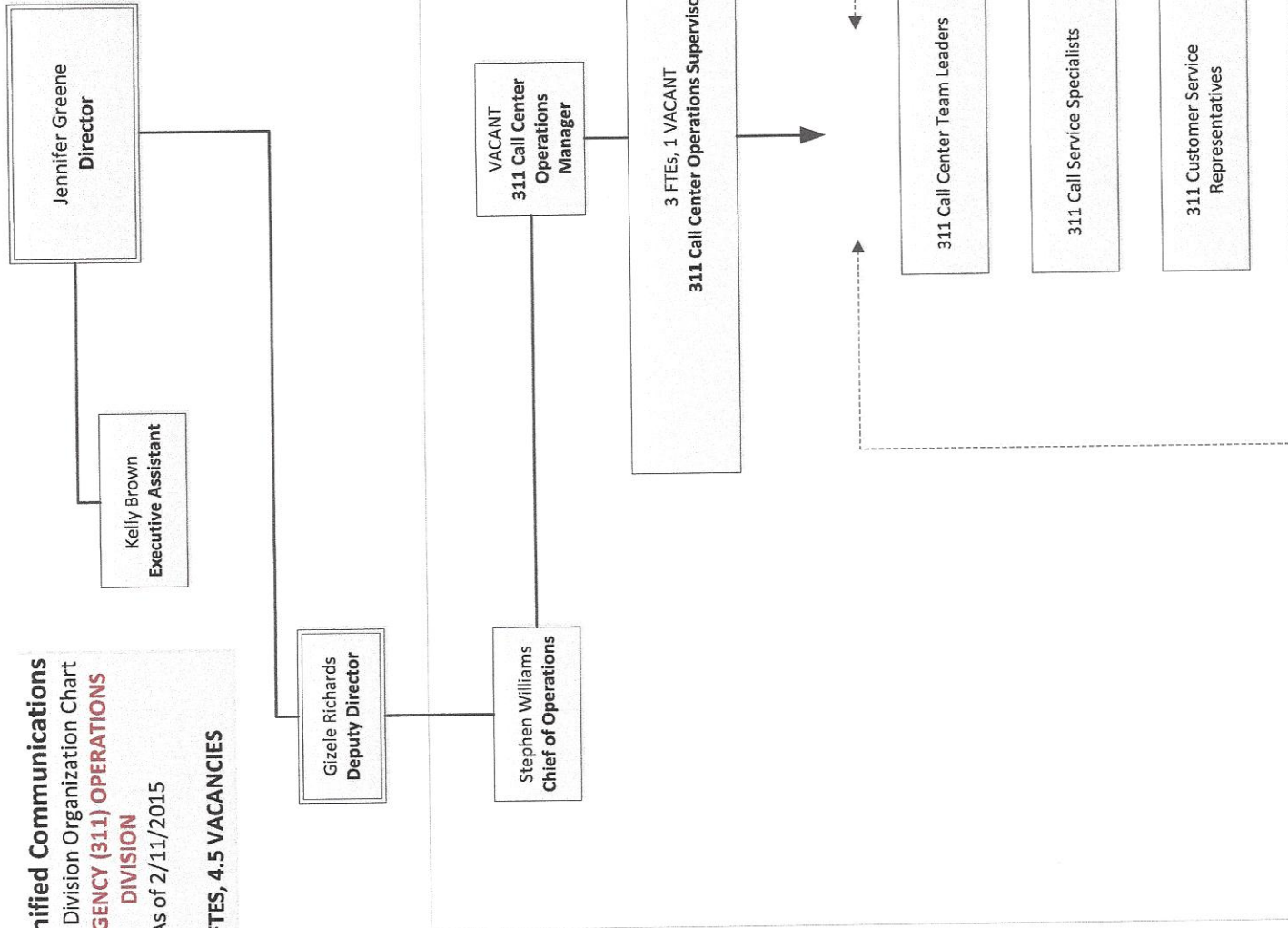
**Office of Unified Communications**  
Performance Division Organization Chart

**NON-EMERGENCY (311) OPERATIONS**

**DIVISION**

As of 2/11/2015

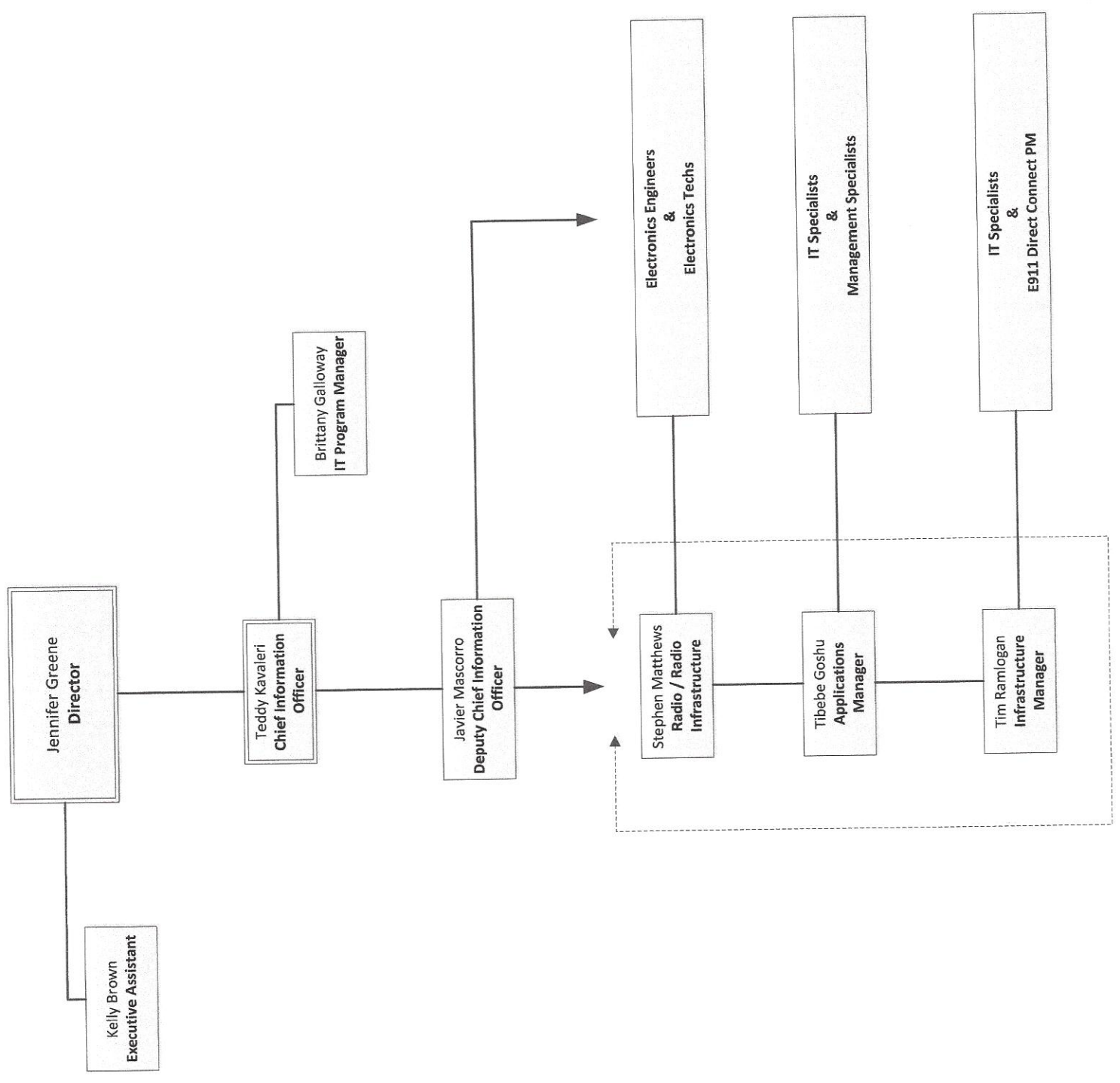
**70.3 FTEs, 4.5 VACANCIES**



**NON - EMERGENCY (311) OPERATIONS**

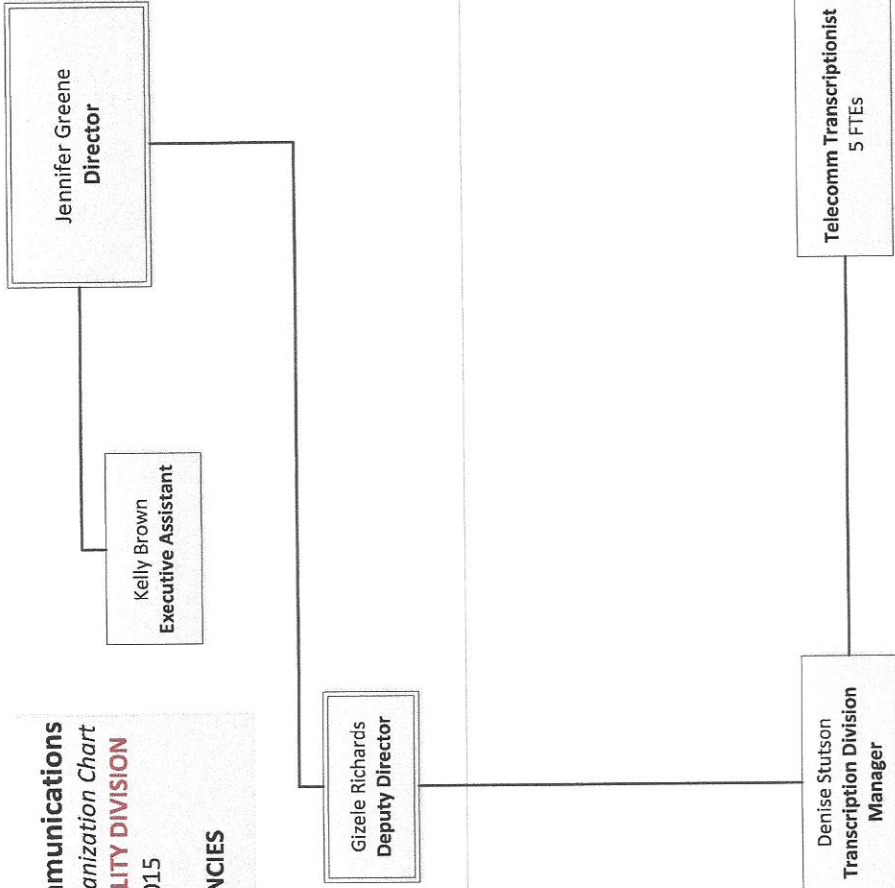
**Office of Unified Communications**  
 Performance Division Organization Chart  
**TECHNOLOGY OPERATIONS DIVISION**  
 As of 2/11/2015

**16 FTES, 3 VACANCIES**



**Office of Unified Communications**  
*Performance Division Organization Chart*  
**TRANSCRIPTION & QUALITY DIVISION**  
As of 2/11/2015

**6 FTEs, 0 VACANCIES**



**Office of Unified Communications**  
 Performance Division Organization Chart  
**AGENCY MANAGEMENT PROGRAM**  
 As of 2/11/2015

17 FTES, 0 VACANCIES

