

Council of the District of Columbia
COMMITTEE ON HUMAN SERVICES
2018 PERFORMANCE OVERSIGHT
1350 Pennsylvania Avenue, N.W., Washington, D.C. 20004

January 25, 2018

Mathew McCollough
Director
Office of Disability Rights
441 4th Street, NW
Suite 729
Washington, D.C. 20001

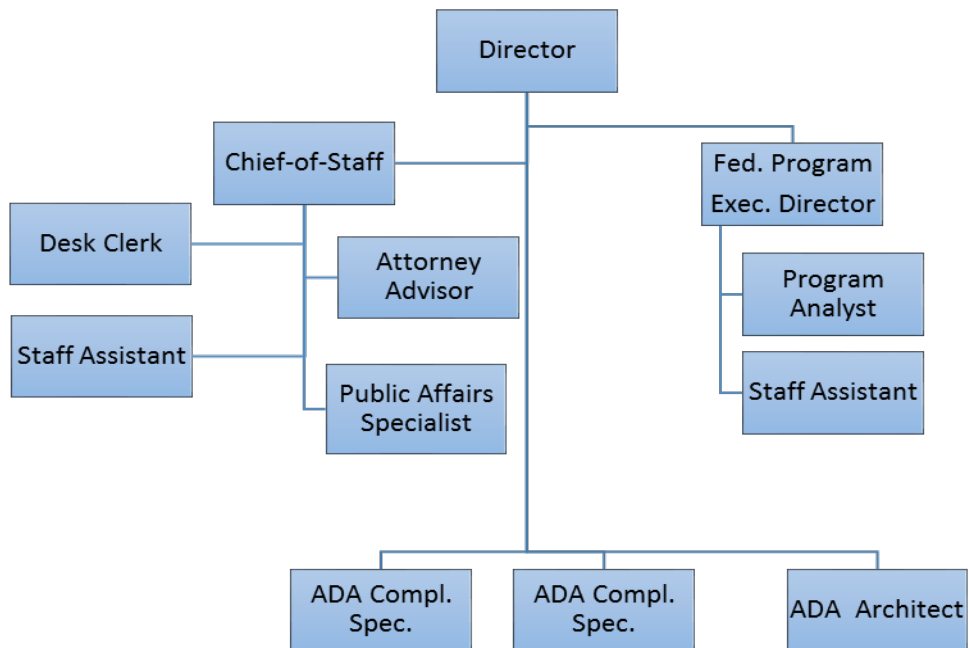
Dear Director McCollough:

The Committee on Human Services will hold performance oversight hearings on agencies under its purview between February 7, 2018 and March 9, 2018. The Office of Disability Rights' hearing will be held on **Wednesday, February 14, at 10 a.m. in Council Chambers (Room 500)**. In preparation for your hearing, the Committee is sending the following questions for your response.

Please submit your responses no later than the close of business on **Thursday, February 8, 2018** in Word or Excel format, as applicable. Your minimizing the use of attachments when not specifically requested is appreciated. *The Committee additionally requests three bound, paper copies of your responses.* If you need to discuss any of the questions, please contact Aamir Mansoor, Legislative Counsel, at amansoor@dccouncil.us or (202) 724-4353.

Agency Organization

- Please provide a complete, up to date organizational chart for each division within the agency, including a list of the employees (name and title) for each subdivision and the number of vacant positions in each subdivision.



Mathew McCollough	Director
Christina Mitchell	Chief of Staff (MS14)
Jessica Hunt	Attorney Advisor (LS13)
Anwar Mahmood	Architect (CS13)
Haydn Demas	ADA Compliance Specialist (CS13)
Susie McFadden-Resper	ADA Compliance Specialist (CS13)
Julia Wolhandler	Public Affairs Specialist (CS12)
Erica Paris	Staff Assistant (CS 9)
Naquran Smith	Clerical Assistant (CS 5)
Subdivision:	Developmental Disabilities Council (DDC) Federally Funded
Alison Whyte	Executive Director, DDC (MS14)
Sudie Johnson	Program Analyst, DDC (CS13)
Denice McCain	Staff Assistant, DDC (CS11)

- a. Please include explanation of the roles and responsibilities for each division and subdivision; and

The Office of Disability Rights is not formally divided into departments, but the separate entity associated with (or housed under) ODR is the Developmental Disabilities Council (DDC). The DDC is a Mayoral appointed body established in accordance with the mandates of the D.C. Developmental Disabilities Basic State Grant Program. The grant program is authorized by the Developmental Disabilities Assistance and Bill of Rights Act of 2000, Public Law 106-402 (42 USC 15001), dated October 30, 2000. The DDC is entirely funded by the United States Department of Health and Human Services (DHHS), Administration for Community Living (ACL), and is charged with identifying and addressing the most pressing needs of people with developmental disabilities in the District of Columbia. Deliverables, initiatives, and outcomes are identified in the DDC's Five Year State Plan (2017–2021) and approved by ACL. ODR serves as the Designated State Agency for the DDC.

- b. For any organizational changes made during the previous year, please provide a narrative explanation of any organizational changes made during the previous year.

In June 2017, former Director Alexis Taylor stepped down. Chief of Staff Christina Mitchell acted as the Interim Director until Mathew McCollough was formally appointed as the Acting Director of the Office of Disability Rights and confirmed by Council on January 9, 2018.

- a. Please provide an up to date position listing for your agency, which includes the following information:
2. Name of employee or statement that the position
 - b. Title of position; is vacant, unfunded, or proposed;
 - c. Date employee began in position;
 - d. Salary and fringe, including the specific grade, series, and step of position; and
 - e. Job status (continuing/term/temporary/contract).

	Title	Name	Hire Date	Salary & Fringe	Grade	Step	Series (Sal Plan)	Job Status
Agency Management Program (AMP)								
	Attorney Advisor	Hunt, Jessica L	9/26/2011	127,164	13	4	LA0001	Reg
	Director, Off. of Disability Rights	McCollough, Matthew	4/4/2010	159,954	E3	0	DX0000	Reg
	Clerical Assistant	Smith, Naquran	1/9/2017	38,760	5	1	DS0087	Reg
	Staff Assistant	Paris, Erica	2/5/2018	57,471	9	0	DS0087	Reg
Disability Rights Program (DRP)								
DRP - LOCAL								
	ADA Comp. Spec. (Employment)	Demas, Haydn G	8/16/1999	117,698	13	7	DS0087	Reg
	ADA Architect	Mahmood, Anwar	5/27/2008	120,861	13	8	DS0087	Reg
	ADA Comp. Spec. (Public Works)	McFadden-Resper, Susie A	1/7/2008	117,698	13	7	DS0087	Reg
	Chief of Staff	Mitchell, Christina R	9/15/2008	141,288	14	0	DS0086	Reg
	Public Affairs Specialist	Wolhandler, Julia	2/19/2018	85,680	12	0	DS0087	Reg
DRP - FEDERAL (Developmental Disabilities Council)								
	PROGRAM ANALYST	Johnson, Sudie B	5/6/2002	124,024	13	9	DS0087	Reg
	STAFF ASSISTANT	Mccain, Denise	3/23/1987	84,823	11	8	DS0087	Reg
	EXECUTIVE DIR	Whyte, Alison Lindsay	1/8/2018	124,236	14	0	DS0087	Reg
ODR TOTAL								

*List information by the division and subdivision

3. Please provide the number of vacancies for FY17 and FY18 to date, by program and activity.

		FY17 Vacant FTEs	FY18 To-Date Vacant FTEs
1000 - Agency Management Program (AMP)		1.0	-
1090	Performance Management	1.0	-
2000 - Disability Rights Program (DRP)		3.0	1.0
2010	Training and Technical Assistance	1.0	1.0
2020	Evaluation and Compliance	1.0	-
2040	State Developmental Disabilities Council	1.0	-
ODR Total Vacancies		4.0	1.0

4. Please update the Committee on the agency's key performance indicators for FY17.

FY 2017 Performance Indicator			
Goal Description	Target Number	Actual Number	Achieved
Number of Employees and Customers Trained	1500	1785	Fully-exceeded
Percentage of sign language requests that are scheduled in 5 days	100%	100%	Fully
Percentage of requests that assistance is provided in 30 days	85%	95%	Fully-exceeded
Percentage of complaints, reasonable accommodation requests that were addressed within 30 days	90%	96%	Fully-exceeded
Percentage of DC-owned building requests that assessments were provided in 30 days	85%	91%	Fully-exceeded

5. Please list all employees detailed to or from your agency, if any. Please provide the reason for the detail, the detailed employee's date of detail, and the detailed employee's projected date of return.

ODR has no employees detailed to or from the agency.

6. Please provide the Committee with:
- A list of all employees who receive cell phones, personal digital assistants, or similar communications devices at agency expense;

Employee	Title	Device
Mathew McCollough	Director	Cellphone
Christina Mitchell	Chief of Staff	Cellphone/Tablet
Beatrice Schmidt	Public Affairs Specialist	Cellphone
Haydn Demas	ADA Compliance Specialist	Cellphone

- b. A list of all vehicles owned, leased, or otherwise used by the agency and to whom the vehicle is assigned;

ODR does not have any vehicles.

- c. A list of employee bonuses granted in FY17 and FY18 to date, if any;

ODR did not grant any bonuses.

- d. A list of travel expenses including the amount spent and the reason, arranged by employee;

MEETING/CONFERENCE	REASON	TRAVEL DATES	NAME	COST
<i>National Supporting Families Community of Practice & Charting the Life Course Showcase</i>	In 2013, the DC Department on Disability Services and the DDC were awarded a grant from the National Association of State Directors of Developmental Disabilities Services to participate in the Supporting Families Community of Practice (http://supportstofamilies.org/). The purpose of this specific Community of Practice grant is to develop systems of supports for families throughout the lifespan of their family member with intellectual and/or developmental disabilities living in the District of Columbia. The National meeting was held in Kansas City, MO.	May 16-18, 2017	Kali Wasenko	\$ 1,555.70
		May 16-17, 2017	Carol Grigsby	\$ 1,275.20
		D.D. Council	TOTAL	\$ 2,830.90
<i>2017 Disability Policy Seminar</i>	DDC seeks to strengthen the voice of District residents with developmental disabilities and their families in support of greater independence, inclusion, empowerment and the pursuit of life as they choose, the participation of these participants at this conference is vital to their personal growth and the continued development of the Developmental Disabilities Council.	March 20-22, 2017	Yvetta Myrick	\$ 255.00
		March 20-22, 2017	Tiffany Smallwood	\$ 255.00
		March 20-22, 2017	Samuel Awosika	\$ 255.00
		March 20-22, 2017	Thomas Mangrum	\$ 255.00
		D.D. Council	TOTAL	\$ 1,020.00
<i>Peer-to-Peer Training</i>	Training to learn about the Parent-2-Parent/Family-to-Family initiative in the Developmental Disabilities Council's (DDC) new Five-Year Plan so the DDC can continue to assist in strengthening the capacity of the Supporting Families Community of Practice.	June 18-20, 2017	Sudie Johnson	\$ 889.77
		D.D. Council	TOTAL	\$ 889.77
<i>National Association of Developmental Disabilities Councils</i>	The DC Developmental Disabilities Council is a member of the National Association of Councils on Developmental Disabilities.	July 11-14, 2017	Sudie Johnson	\$ 1,985.21
		July 11-14, 2017	Ricardo Thorton	\$ 1,872.64
		D.D. Council	TOTAL	\$ 3,857.85
<i>Parent-2-Parent USA 2017 Leadership Institute</i>	Training to gain more knowledge so DDC can develop its Family Ties of DC initiative with an emphasis on quality standards, networking opportunities and opportunities to problem solve and brainstorm topics with a broader team.	October 22-24, 2017	Sudie Johnson	\$ 1,617.92
		October 22-24, 2017	Tiffany Smallwood	\$ 1,333.70
		D.D. Council	TOTAL	\$ 2,951.62
<i>TASH Conference</i>	DDC seeks to strengthen the voice of District residents with developmental disabilities and their families in support of greater independence, inclusion, empowerment and the pursuit of life as they choose, the participation of these participants at this conference is vital to their personal growth and the continued development of the Developmental Disabilities Council.	December 12-15, 2017	Thomas Mangrum	\$ 597.70
		D.D. Council	TOTAL	\$ 597.70
<i>National ADA Symposium</i>	The National ADA Symposium (Chicago, IL) provides the latest information on ADA regulations and guidelines, implementation strategies, and best practices. The Symposium offers a range of sessions to meet the diverse needs of attendees, from presentations covering basic content for novices to dynamic, interactive sessions designed specifically for attendees with years of experience and ADA expertise.	May 14 - 17, 2017	Anwar Mahmood	\$ 1,852.84
		May 14 - 17, 2017	Haydn Demas	\$ 1,852.84
		May 14 - 17, 2017	Susie McFadden-Resper	\$ 1,852.84
		May 14 - 17, 2017	Christina Mitchell	\$ 1,852.84
		ODR	TOTAL	\$ 7,411.36

- e. A list of the total overtime and workman's compensation payments paid in FY17 and FY18, to date.

ODR did not pay overtime or workman's compensation.

Budget

7. Please provide a chart showing your agency's approved budget and actual spending, by program, for FY17 and FY18, to date. In addition, please describe any variance between fiscal year appropriations and actual expenditures for FY17 and FY18, to date.

	FY 2017			
Program	Approved Budget	Actuals	Variance	Comments
Agency Management Program (AMP)	397,312	378,072	19,240	Vacancy savings from Director's position
Disability Rights Program (DRP)	1,372,543	1,288,266	84,277	Vacancy savings from the temporary Program Analyst position scheduled to be filled by Workers Compensation. The injured worker did not accept the position.
Total	\$ 1,769,855	\$ 1,666,338	\$ 103,517	
	FY 2018			
Program	Approved Budget	YTD Expenditures (including obligations) as of 12/31/2017	Variance	Comments
Agency Management Program (AMP)	418,916	87,134	331,782	Year in process.
Disability Rights Program (DRP)	1,606,707	378,683	1,228,024	Year in process.
Total	\$ 2,025,623	\$ 465,817	\$ 1,559,806	

8. Please list any reprogramming, in or out, which occurred in FY17 or FY18, to date. For each reprogramming, please list the total amount of the reprogramming, the original purposes for which the funds were dedicated, and the reprogrammed use of funds.

FY 2017			
Amount Transferred	Program From	Program To	Purpose of Reprogramming
Inside the Agency			
70,570.00	AMP	AMP	Within Personal Services: from Continuing Full-Time (object class 11) to Term Full-time (object class 12) to fund a term FTE
15,000.00	DRP	DRP	From funds originally purposed for professional services - sign language interpretation to equipment for office furniture and computer equipment
86,338.18	DRP	DRP	Within Supplies, Other Services and Charges, and Equipment to align the carryover garnt budget with expenditures to prevent any potential grant lapse
Outside the Agency			
None in FY 2017			

9. Please provide a complete accounting for all intra-District transfers received by or transferred from the agency during FY17 or FY18, to date.

See chart on next page

FY 2017			
Intra-District Transfers Sent			
Amount	Seller Agency	Buyer Agency	Service
49,677.00	Department on Disability Services (DDS)	Office of Disability Rights (ODR)	News Reading Services
6,000.00	Executive Office of the Mayor Support Services (EOM)	Office of Disability Rights (ODR)	Telecommunications, transportation, courier, and associated general administrative services
3,822.00	Department of Public Works (DPW)	Office of Disability Rights (ODR)	Fleet Maintenance
35.00	Office of the Chief Technology Officer (OCTO)	Office of Disability Rights (ODR)	Virtual Private Network (VPN)
56,813.48	Office of Contracting and Procurement	Office of Disability Rights (ODR)	Purchase Card
116,347.48			
Intra-District Transfers Received			
Amount	Seller Agency	Buyer Agency	Service
33,254.50	Office of Disability Rights (ODR)	Executive Office of the Mayor (EOM)	Sign Language Interpretation (SLI)
309.00	Office of Disability Rights (ODR)	Office of Notary Commissions & Authentications (ONCA)	Sign Language Interpretation (SLI)
11,995.50	Office of Disability Rights (ODR)	Office of Planning (OP)	Sign Language Interpretation (SLI)
1,750.00	Office of Disability Rights (ODR)	Dept of Human Resources (DCHR)	Sign Language Interpretation (SLI)
5,022.00	Office of Disability Rights (ODR)	Commission on the Arts and Humanities (CAH)	Sign Language Interpretation (SLI)
17,001.00	Office of Disability Rights (ODR)	Dept of Employment Services (DOES)	Sign Language Interpretation (SLI)
1,683.00	Office of Disability Rights (ODR)	Office of the Tenant Advocate (OTA)	Sign Language Interpretation (SLI)
8,598.00	Office of Disability Rights (ODR)	Dept of Consumer & Regulatory Affairs (DCRA)	Sign Language Interpretation (SLI)
2,675.00	Office of Disability Rights (ODR)	Department of Housing and Community Development (DHCD)	Sign Language Interpretation (SLI)
872.00	Office of Disability Rights (ODR)	DC Board of Elections and Ethics (DCBOEE)	Sign Language Interpretation (SLI)
3,664.00	Office of Disability Rights (ODR)	Office of the Deputy Mayor for Planning & Economic Development (DMPED)	Sign Language Interpretation (SLI)
13,572.50	Office of Disability Rights (ODR)	Deputy Mayor for Greater Economic Opportunity (DMGEO)	Sign Language Interpretation (SLI)
11,575.00	Office of Disability Rights (ODR)	Dept of Small & Local Business Development (DSLBD)	Sign Language Interpretation (SLI)
1,560.00	Office of Disability Rights (ODR)	Metropolitan Police Department (MPD)	Sign Language Interpretation (SLI)
930.00	Office of Disability Rights (ODR)	Deputy Mayor for Public Safety & Justice (DMPSJ)	Sign Language Interpretation (SLI)
6,105.50	Office of Disability Rights (ODR)	Office of Administrative Hearings (OAH)	Sign Language Interpretation (SLI)
99,242.75	Office of Disability Rights (ODR)	DC Public Schools (DCPS)	Sign Language Interpretation (SLI)
2,847.25	Office of Disability Rights (ODR)	Office of the State Superintendent of Education (OSSE)	Sign Language Interpretation (SLI)
2,016.00	Office of Disability Rights (ODR)	Office of the Deputy Mayor for Education (ODME)	Sign Language Interpretation (SLI)
396.00	Office of Disability Rights (ODR)	Dept of Parks and Recreation (DPR)	Sign Language Interpretation (SLI)
6,936.00	Office of Disability Rights (ODR)	Department of Health (DOH)	Sign Language Interpretation (SLI)
1,311.00	Office of Disability Rights (ODR)	Office of Human Rights (OHR)	Sign Language Interpretation (SLI)
8,460.00	Office of Disability Rights (ODR)	Department of Human Services (DHS)	Sign Language Interpretation (SLI)
10,088.00	Office of Disability Rights (ODR)	District Department of Transportation (DDOT)	Sign Language Interpretation (SLI)
4,865.00	Office of Disability Rights (ODR)	District Department of the Environment (DDOE)	Sign Language Interpretation (SLI)
1,699.50	Office of Disability Rights (ODR)	Department of Behavioral Health (DBH)	Sign Language Interpretation (SLI)
2,374.00	Office of Disability Rights (ODR)	Department of Insurance, Securities, and Banking (DISB)	Sign Language Interpretation (SLI)
260,802.50			

FY 2018			
Intra-District Transfers Sent			
Amount	Seller Agency	Buyer Agency	Service
56,900.00	Office of Contracting and Procurement	Office of Disability Rights (ODR)	Purchase Card
3,822.00	Department of Public Works (DPW)	Office of Disability Rights (ODR)	Fleet Maintenance
961.92	Office of the Chief Technology Officer (OCTO)	Office of Disability Rights (ODR)	Microsoft Office 365 subscription services
61,683.92			
Intra-District Transfers Received			
Amount	Seller Agency	Buyer Agency	Service
None to Date			

10. Please identify any special purpose revenue accounts maintained by, used by, or available for use by your agency during FY17 or FY18, to date. For each account, please list the following:

- The revenue source name and code;
- The source of funding;
- A description of the program that generates the funds;
- The amount of funds generated by each source or program; and
- Expenditures of funds, including the purpose of each expenditure.

ODR has no special purpose revenue accounts.

11. Please provide a list of all projects for which your agency currently has capital funds available. Please include:
- The amount of capital funds available for each project or fund;
 - Planned remaining spending on the project, by Fiscal Year;
 - A description of each project or fund; and
 - A status report on each project, including whether the project is on budget and on schedule, and if not, why not.

ODR has no capital funds.

12. Please provide the agency's fixed costs budget and actual spend for FY17 and FY18, to date. Please include a narrative description of any substantial changes in these costs.

FY 2017				
Fixed Costs	Budget	Expenditures	Variance	Comments
Fleet Maintenance	3,955	3,822	133	
Telephones	35	35	-	No assessed fixed costs for Telephones. \$35 expenditure for Virtual Private Network (VPN)
Total	\$ 3,990	\$ 3,857	\$ 133	
FY 2018				
Fixed Costs	Budget	YTD (including obligations)	Variance	Comments
Fleet Maintenance	3,367	3,822	(455)	DPW overbilled for Fleet Maintenance; to be corrected
Telephones	8,028	-	8,028	Budgeted ODR telephone expenditure is actually billed within OCTO
Total	\$ 11,395	\$ 3,822	\$ 7,573	

Contracting and Procurement

13. Please list each contract, procurement, lease, and grant (“contract”) awarded or entered into by your agency during FY17 and FY18, to date. For each contract, please provide the following information, where applicable:
- The name of the contracting party;
 - The nature of the contract, including the end product or service;
 - The dollar amount of the contract, including budgeted amount and actually spent;
 - The term of the contract;
 - Whether the contract was competitively bid or not;
 - The name of the agency’s contract monitor and the results of any monitoring activity; and
 - Funding source

Contractor	Service Provided	Amount	Term	Competitively Bid (Yes/No)	Contract Monitor	Funding Source
Graham Staffing	American Sign Language Interpretation services for the District’s Effective Communication Program.	\$57,000 \$50,000	10/1/16 – 9/30/17 10/1/17 – 9/30/17	Yes	C. Mitchell	Local
ACSI	American Sign Language Interpretation services for the District’s Effective Communication Program.	\$224,000 \$50,000	10/1/16 – 9/30/17 10/1/17 – 9/30/18	Yes	C. Mitchell	Local
Career Discovery, Inc.	American Sign Language Interpretation services for the District’s Effective Communication Program.	\$100,000	11/1/2017- 9/30/2018	Yes	C. Mitchell	Local
Xerox	Lease agreement for the copier and maintenance.	\$8,000	10/1/15 – 9/30/18	Yes	M. McCollough	Federal
Project Action!	Grant awarded to Self-Advocacy Leadership Program.	\$15,000	10/5/16 – 9/30/17	No	M. McCollough	Federal

14. Please provide a list of any contractors or consultants performing work within your office, including job description, salary, and length of contract and city of residence.

ODR did not use any contractors or consultants.

15. Please provide a list of all MOUs currently in place, any MOUs planned for the coming year, and a brief description of the purpose for each MOU.

#1. The District-wide Sign Language MOU between the Office of the City Administrator and ODR. On behalf of the participating agencies, the OCA ensures that the funding for sign language services are transferred Intra-District to ODR.

#2. The Washington Ear MOU between the Department of Disabilities Services and ODR. This MOU ensures Washington Ear audible services are provided to all blind District residents.

Agency Programs and Policies

16. Please list each policy initiative of your agency during FY17 and FY18, to date. For each initiative please provide:
- A detailed description of the program;
 - The name of the employee who is responsible for the program;
 - The total number of FTEs assigned to the program; and
 - The amount of funding budgeted to the program.

Objective 1: Evaluation and Compliance

INITIATIVE 1.1: Increase physical access to District-owned and leased facilities.

ODR consulted with District government agencies in order to establish appropriate priorities for capital improvements to DC facilities to provide ADA access. In FY 2017, ODR surveyed fifty-six (56) DC Public Schools to determine accessibility and provide recommendations for modifications, if appropriate. **Completion Date: September 30, 2017.**

Responsible Employees: Anwar Mahmood, Mark Nutter, Na-Quran Smith

Total Number of FTE: 3

Total Amount Budgeted: No specific amount budgeted for this program.

INITIATIVE 1.2: DC Government Workplace Accessibility

ODR completed the District Government Worksite Assessments of all agencies under the Mayor and published all implementation plans. **Completion Date: September 30, 2018.**

Responsible Employees: Christina Mitchell, Haydn Demas, Jessica Hunt, Susie McFadden-Resper

Total Number of FTE: 4

Total Amount Budgeted: No specific amount budgeted for this program.

INITIATIVE 1.3:

Reviewed community spaces to determine accessibility for seniors and persons with disabilities. ODR surveyed at least two (2) parks in each of the eight Wards and provided recommendations for improvements. **Completion Date: September 30, 2017.**

Responsible Employees: Anwar Mahmood, Mark Nutter, Na-Quran Smith

Total Number of FTE: 3

Total Amount Budgeted: No specific amount budgeted for this program.

Objective 2: Operations**INITIATIVE 2.1: Timely Sign Language Interpretation**

ODR scheduled sign language interpretation within 5 days of the request 100% of the time. **Completion Date: September 30, 2017.**

Responsible Employees: Haydn Demas, Paul Khouri

Total Number of FTE: 2

Total Amount Budgeted: No specific amount budgeted for this program.

Objective 3: Public Information and Outreach**INITIATIVE 3.1: Deaf and Hard of Hearing Forums**

ODR hosted two (2) forums for the deaf and hard of hearing to provide information on different initiatives and programs available in the District. **Completion Date: September 30, 2017.**

Responsible Employees: Beatrice Schmidt, Haydn Demas, Paul Khouri

Total Number of FTE: 3

Total Amount Budgeted: No specific amount budgeted for this program.

INITIATIVE 3.1: The Olmstead Plan

ODR continued to monitor the District's compliance with the current three-year Olmstead Plan, which outlined the District's commitment to assist people with disabilities in transition from long-term care settings to home and community-based settings with proper supports. ODR ensured that the quarterly reports from each participating agency are published for public review. ODR continued to convene quarterly meetings of the Olmstead Working Group to discuss progress toward the goals of the current three-year Plan, as well as future community integration efforts in the District. ODR hosted two (2) Community Forums to provide information about the current Plan to the public. **Completion Date: September 30, 2018.**

Responsible Employee: Jessica Hunt

Total Number of FTE: 1

Total Amount Budgeted: No specific amount budgeted for this program.

17. Please provide a list of all studies, research papers, and analyses (“studies”) the agency prepared, or contracted for, during FY17 and FY18, to date. Please state the status and purpose of each study.

ODR has not published any studies, research papers, or analyses.

18. Please list and describe any ongoing investigations, studies, audits, or reports on your agency or any employee of your agency, or any investigations, studies, audits, or reports on your agency or any employee of your agency that were completed during FY17 or FY18, to date.

Neither ODR nor its employees have participated in any investigations, studies, or audits.

19. If applicable, please explain the impact on your agency of any legislation passed at the federal level during FY17 or FY18, to date.

We are not aware of any federal legislation that would impact the agency at this time.

20. Please list all regulations for which the agency is responsible for oversight or implementation. Please list by chapter and subject heading, including the date of the most recent revision for each chapter.

ODR is responsible for oversight of the District’s compliance with the Americans with Disabilities Act (ADA) Title I and Title II, as well as other federal and local disability rights laws, including the Disability Rights Protection Act of 2006, which created the office. Additionally, we assist the District to ensure compliance with the following:

- Section 504 of the Rehabilitation Act of 1973
- Fair Housing Act of 1968
- 21st Century Communications Video Accessibility Act
- Mental Health Consumers Rights Protection Act
- DC Human Rights Act of 1977
- DC American Sign Language Legal Recognition
- Mayor’s Order 2012-160 on Video Accessibility for Persons who Are Deaf and Hard of Hearing
- Mayor’s Order 2017-10 on Enhancing Compliance with the Disability Rights Protection Act and the ADA
- Mayor’s Order 2008-38 on Establishment of the DC Commission on Persons with Disabilities
- Mayor’s Order 2008-64 on Appointing the Office of Disability Rights as EEO Counselor for Employees with Disabilities

21. Did the agency meet the objectives set forth in the performance plan for FY17? Please provide a narrative description of what actions the agency undertook to meet the key performance indicators or any reasons why such indicators were not met.

All FY17 objectives were fully met with the exception of one objective *1.2: DC Government Workplace Accessibility*. ODR attempted to complete ADA Compliance Plans for roughly 80 agencies. Based off of the feedback from the larger (multiple locations) agencies, we have extended the project to be completed over a 2-year span. We received over 40 locations to date.

22. What has the agency done in FY17 to make the activities of your agency more transparent to the public?

In accordance with the Open Government requirements established in FY14, we have continued the efforts by creating online access to the following information

<https://odr.dc.gov/page/open-government-and-foia-odr>:

- Link to all employee salary information
- Administrative staff manuals and instructions
- Information explaining the rights of persons with disabilities
- Information dealing with the receipt or expenditure of public funds
- ODR Budget information
- Minutes of public meetings
- ODR FOIA officer and reports
- Organizational Chart
- A mechanism for the public to submit feedback on the agency's performance or other agency actions, [agency feedback link](#).

23. For FY17 and FY18, to date, how many and which facilities have been assessed for accessibility? Please provide a summary of the outcomes of your assessments by facility type.

Please see Attachment A

24. Please respond to the following for FY17 and FY18, to date:
- The number of complaints received by ODR;
 - Provide a breakdown of complaints received by category type and the number within each category type;
 - Indicate the agency or provider identified in the complaint;
 - Provide the outcomes or corrective actions to address each complaint; and
 - Provide the response time for responding to complaints.

The chart below shows the number of complaints received by ODR against other District agencies for informal dispute resolution; it also shows requests received for technical assistance around the ADA and other laws; and requests for referrals to agencies outside District government. Additionally, it covers requests made by agencies for review of decisions on employee reasonable accommodation requests.

CITA Category	FY17	FY18
Complaints	110	16
Information	147	49
Technical Assistance	176	52
Reasonable Accommodations	216	41
Miscellaneous	3	2
TOTAL RECEIVED	652	160
Agency Submissions	FY17	FY18
Dept. Behavior Health	23	12
DC People's Counsel	1	0
Metropolitan Police Dept.	154	14
Office of Disability Rights	474	134

25. One of ODR's objectives is to "improve the responsiveness of the government systems and employees to the needs of people with disabilities." To that end, what efforts and strategies has the agency made in FY17 and FY18, to date, to improve the response of CFSA, DYRS, DBH, and DHS to the needs of parents with disabilities to have reasonable accommodations made so that they can access the services that these agencies offer?

CFSA, DBH, DYRS, and DHS are all participants in the District's current 2017-2020 Olmstead Plan, which ODR oversees. The Plan outlines the District's commitment to ensuring that people with disabilities have the proper supports to make meaningful choices about how they wish to participate in the community. Specifically, both DBH and DHS participate in the Olmstead Plan's efforts around finding appropriate housing for individuals transitioning from long term care, while CFSA and DYRS are involved in the Plan's priority to support children and youth transitioning from residential treatment facilities or foster care.

26. What trainings has ODR provided to district employees and other agencies regarding:
- Creating compliant processes that are accessible to service users of various ability statuses?
 - How and when to propose accommodations to service users?
 - Federal and local disability rights law?

Training Title		# of Participants
ADA Accessibility	Understanding of Architectural barriers within and around District buildings.	46
ADA 101 (Overview)	General overview of the ADA.	152
ADA Titles I and/or II	Detailed understanding of Title I (Employment) and Title II (Public Accommodations) of the ADA.	101
Effective Communication	Overview of the various communications formats to be used for employees and constituents.	38
Presidential Inauguration	Overview of the ADA for staff who come in contact with visitors and residents of the District during Presidential Inauguration events.	45
Sensitivity	Overview of disability related sensitivity issues.	368
Specialty (<i>i.e. Deaf Awareness, Hypothermia, Suicide, White Cane, etc.</i>)	Varies with actual topic.	155

Listing of private companies and other government agencies who have been granted permission to use ODR's Sensitivity training.

- American Airlines
- Yellow Cab of DC (500 total trained)
- IAG of Australia
- CT Judicial Branch
- City of St Petersburg (3416 total trained)
- Government of Hall County, GA (3700 total to be trained this year)
- Canadian Council on Rehabilitation and Work

27. What impact, if any, has the 2015 United States Department of Health and Human Services (HHS) and the Department of Justice (DOJ) report "Protecting the Rights of Parents and Prospective Parents with Disabilities: Technical Assistance for State and Local Child Welfare Agencies and Courts under Title II of the Americans with Disabilities Act and Section 504 of the Rehabilitation Act"¹ had on the ODR's offering of technical assistance to CFSA?

¹ See https://www.ada.gov/doj_hhs_ta/child_welfare_ta.html.

Annually, ODR offers multiple opportunities for training and technical assistance on compliance with the ADA to all agencies through regular contact with agency ADA Coordinator(s), including CFSA. ODR maintains this contact through the work of our ADA Compliance Specialists, who advise the agency on employment and public access concerns, and also through our training initiatives, newsletters, and our government listserv. In addition, ODR offers agency-specific training and on-site technical assistance by request. Our training and technical assistance materials cover the ADA Title II mandate of equal access to government programs, benefits, and services for all people with disabilities. ODR's technical assistance focuses on the necessity of reasonable accommodation for people with all types of disabilities, including intellectual and developmental disabilities, when accessing or participating in any service or program the government provides.

Location: Anne M. Goding Elementary School 920 F Street NE Washington DC 20002		Survey Date: 03/10/2017
Survey conducted by: Mark Nutter Naquran Smith	Report completed by: Anwar Mahmood Architect (ADA) anwar.mahmood@dc.gov 202-727-9296	

Parking

ADA Inaccessibilities

- No accessible access aisles in parking provided.

Remedial Modifications

- Parking facility to be redesigned to incorporate standard and van accessible parking spaces. Refer to 2010 ADA Standards for accessible design Section 208.2 & Fig. 502.2.
- A drop-off area / Loading Zone may be incorporated and designed to be accessible. Refer to 2010 ADA Standards for accessible design Section 502, 503 & Fig. 503.3.

Exterior Accessible Route

ADA Inaccessibilities

- Detectable warnings not provided at the curb ramps on the accessible route of travel.

Remedial Modifications

- On redesign of the Parking area, we need to make sure the access aisles connect to an accessible route. Refer to 2010 ADA Standards for accessible design Chapter 4, Section 402.
- Wherever a route crosses a road or a differing traffic pattern, truncated domes need to be provided for the route to become accessible. Refer to 2010 ADA Standards for accessible design Chapter 7, Section 705.

Curb Ramps & Ramps

ADA Inaccessibilities

- Ramp provided is sloped @ 10.6% which is too steep.

Remedial Modifications

- Maximum allowable slope for an accessible ramp is 8.33% (1:12). Refer to 2010 ADA Standards for accessible design Section 405 & Fig. 405.7.

Entrances & Doors

ADA Inaccessibilities

- Directional signage to the accessible entrance is not provided.
- Interior door requires a force of 15lbs. to operate.

Remedial Modifications

- Entrances* shall be provided in accordance with 2010 ADA Standards for accessible design Chapter 2, Section 206.4. *Entrance* doors, doorways and gates shall comply with 404 and shall be on an *accessible* route complying with 402. Refer to 2010 ADA Standards for accessible design Section 703 and provided

directional signage to the persons with disabilities towards accessible entrance.

- Most interior doors are inaccessible and too heavy to operate. It is proposed to inspect all interior door / accessible interior doors on the path of travel to make sure these comply with 2010 ADA Standards for accessible design Section 404.2.8, 404.2.8.2 & 404.2.9.

Lobbies & Corridors

ADA Inaccessibilities

-

Remedial Modifications

-

Rooms & Spaces

ADA Inaccessibilities

-

Remedial Modifications

-

Signage

ADA Inaccessibilities

-

Remedial Modifications

-

Vertical Circulation

ADA Inaccessibilities

- Stairs are not provided with non-slip surface.
- Continuous handrails are not provided on both sides of the stairs.
- Elevator is not provided with ADA compliant signage.

Remedial Modifications

- Refer to 2010 ADA Standards for accessible design Section 504 and 505 and Figures 505.4, 505.5, 505.6 505.7.2 & 505.10.2 for further guidance on accessible stairs. Handrails have to be continuous on both sides and handrail extensions need to be provided.
- Elevators need to comply with 2010 ADA Standards for accessible design Section 407 and all subsection.
- Additionally you may peruse Section 703 for general signage.

Toilet Rooms & Bathing Facilities

ADA Inaccessibilities

- Accessible signage is not provided to the restroom doors.
- Toilet paper dispenser is installed too high.
- An array of Urinals are installed too close to each other.
- Plumbing under the vanity / sink is exposed and not insulated.

Remedial Modifications

- All toilets / restroom facilities need to be reworked / redesigned to be accessible.
- Refer to 2010 ADA Standards for accessible design Section 603, 604, 605 and Section 606 for further modifications.

Miscellaneous

ADA Inaccessibilities

Remedial Modifications

Etc.

Notes:

This report has been generated from the S4 Surveys. Errors and Omissions are excepted.

Location: Columbia Heights Education Campus 3101 16 th . Street NW Washington, DC 20010		Survey Date: 01/12/2017
Survey conducted by: Mark Nutter Naquran Smith	Report completed by: Anwar Mahmood Architect (ADA) anwar.mahmood@dc.gov 202-727-9296	

Parking	
<u>ADA Inaccessibilities</u> <ul style="list-style-type: none"> 	
<u>Remedial Modifications</u> <ul style="list-style-type: none"> 	
Exterior Accessible Route	
<u>ADA Inaccessibilities</u> <ul style="list-style-type: none"> No detectable warnings provided on curb ramps. 	
<u>Remedial Modifications</u> <ul style="list-style-type: none"> Wherever a route crosses a road or a differing traffic pattern, truncated domes need to be provided for the route to become accessible. Refer to 2010 ADA Standards for accessible design Chapter 7, Section 705. 	
Curb Ramps & Ramps	
<u>ADA Inaccessibilities</u> <ul style="list-style-type: none"> 	
<u>Remedial Modifications</u> <ul style="list-style-type: none"> 	
Entrances & Doors	
<u>ADA Inaccessibilities</u> <ul style="list-style-type: none"> Directional signage to the accessible entrance is not provided. Interior door requires a force of 8 lbs. to operate. 	
<u>Remedial Modifications</u> <ul style="list-style-type: none"> <i>Entrances</i> shall be provided in accordance with 2010 ADA Standards for accessible design Chapter 2, Section 206.4. <i>Entrance</i> doors, doorways and gates shall comply with 404 and shall be on an <i>accessible</i> route complying with 402. Refer to 2010 ADA Standards for accessible design Section 703 and provided directional signage to the persons with disabilities towards accessible entrance. Most interior doors are inaccessible and too heavy to operate. It is proposed to inspect all interior door / accessible interior doors on the path of travel to make sure these comply with 2010 ADA Standards for accessible design Section 404.2.8, 404.2.8.2 & 404.2.9. 	
Lobbies & Corridors	
<u>ADA Inaccessibilities</u> <ul style="list-style-type: none"> 	
<u>Remedial Modifications</u>	

•
Rooms & Spaces
<u>ADA Inaccessibilities</u>
•
<u>Remedial Modifications</u>
•
Signage
<u>ADA Inaccessibilities</u>
•
<u>Remedial Modifications</u>
•
Vertical Circulation
<u>ADA Inaccessibilities</u>
•
<u>Remedial Modifications</u>
•
Toilet Rooms & Bathing Facilities
<u>ADA Inaccessibilities</u>
•
<u>Remedial Modifications</u>
•
Miscellaneous
<u>ADA Inaccessibilities</u>
•
<u>Remedial Modifications</u>
•
Notes:

This report has been generated from the S4 Surveys. Errors and Omissions are excepted.

Location: H.D. Cooke Elementary School 2525 17th St NW, Washington, DC 20009		Survey Date: 02/21/2017
Survey conducted by: Mark Nutter Naquran Smith	Report completed by: Anwar Mahmood Architect (ADA) anwar.mahmood@dc.gov 202-727-9296	

Parking

ADA Inaccessibilities

- Parking lot has 24 Parking spaces with no van accessible parking.
- Accessible signage not provided.
- No access aisles provided.
- No accessible route provided.

Remedial Modifications

- Parking facility to be redesigned to incorporate standard and van accessible parking spaces. Refer to 2010 ADA Standards for accessible design Section 208.2 & Fig. 502.2.
- Refer to 2010 ADA Standards for accessible design Section 703 for signage modifications.
- On redesign of the Parking area, we need to make sure the access aisles connect to an accessible route. Refer to 2010 ADA Standards for accessible design Chapter 4, Section 402.
- Parking lot slopes on the accessible route, access aisles and accessible parking bays has to be modified to be accessible.
- A drop-of area / Loading Zone may be incorporated and designed to be accessible. Refer to 2010 ADA Standards for accessible design Section 502, 503 & Fig. 503.3.

Exterior Accessible Route

ADA Inaccessibilities

- No detectable warnings provided on curb ramps.

Remedial Modifications

- Wherever a route crosses a road or a differing traffic pattern, truncated domes need to be provided for the route to become accessible. Refer to 2010 ADA Standards for accessible design Chapter 7, Section 705.

Curb Ramps & Ramps

ADA Inaccessibilities

- Accessible ramp is sloped too steep at points.
- Railings are inaccessible.
- Ramp is not provided with edge protection.
- Ramp landings not accessible.

Remedial Modifications

- Maximum allowable slope for an accessible ramp is 8.33% (1:12). Refer to 2010 ADA Standards for accessible design Section 405 & Fig. 405.7.
- The above Section / subsection needs to be referred for modifications to railings and edge protection.

Entrances & Doors

ADA Inaccessibilities

- Directional signage to the accessible entrance is not provided.
- Interior door requires an excessive force to operate.

Remedial Modifications

- *Entrances* shall be provided in accordance with 2010 ADA Standards for accessible design Chapter 2, Section 206.4. *Entrance* doors, doorways and gates shall comply with 404 and shall be on an *accessible* route complying with 402. Refer to 2010 ADA Standards for accessible design Section 703 and provided directional signage to the persons with disabilities towards accessible entrance.
- Most interior doors are inaccessible and too heavy to operate. It is proposed to inspect all interior door / accessible interior doors on the path of travel to make sure these comply with 2010 ADA Standards for accessible design Section 404.2.8, 404.2.8.2 & 404.2.9.

Lobbies & Corridors

ADA Inaccessibilities

-

Remedial Modifications

-

Rooms & Spaces

ADA Inaccessibilities

-

Remedial Modifications

-

Signage

ADA Inaccessibilities

-

Remedial Modifications

-

Vertical Circulation

ADA Inaccessibilities

- Handrails to the stairs are not accessible.

Remedial Modifications

- Refer to 2010 ADA Standards for accessible design Section 504 and 505 and Figures 505.4, 505.5, 505.6 505.7.2 & 505.10.2 for further guidance on accessible stairs. Handrails have to be continuous on both sides and handrail extensions need to be provided.

Toilet Rooms & Bathing Facilities

ADA Inaccessibilities

- Accessible signage is not provided to the restroom doors.
- Plumbing under the vanity / sink is exposed and not insulated.
- Mirrors are installed too high.

Remedial Modifications

- Refer to 2010 ADA Standards for accessible design Section 703, 703.6.1, for further modifications.
- Accessible restrooms needs to be revisited to redesign for accessibility. Refer to 2010 ADA Standards for accessible design Chapter 6 and Section 603 onward relating to the inaccessibilities.
- Plumbing under the sinks needs to be insulated and protected.
- Reflecting surface of the Mirrors need not exceed 40" AFF.

Miscellaneous**ADA Inaccessibilities**

-

Remedial Modifications

-

Notes:

This report has been generated from the S4 Surveys. Errors and Omissions are excepted.

Location: Howard University 2301 Georgia Ave. NW Suite D Washington DC 20001	Survey Date: 04/11/2017
Survey conducted by: Mark Nutter Naquran Smith	Report completed by: Anwar Mahmood Architect (ADA) anwar.mahmood@dc.gov 202-727-9296

Parking	
<u>ADA Inaccessibilities</u>	
<ul style="list-style-type: none"> No site specific parking provided. 	
<u>Remedial Modifications</u>	
<ul style="list-style-type: none"> No action required. 	
Exterior Accessible Route	
<u>ADA Inaccessibilities</u>	
<ul style="list-style-type: none"> Siamese Connection on the Accessible route is protruding object. 	
<u>Remedial Modifications</u>	
<ul style="list-style-type: none"> Refer to 2010 ADA Standards for accessible design Chapter 3, Section 307 & Fig. 307.2 for Technical Assistance regarding remedial modifications. 	
Curb Ramps & Ramps	
<u>ADA Inaccessibilities</u>	
<ul style="list-style-type: none"> 	
<u>Remedial Modifications</u>	
<ul style="list-style-type: none"> 	
Entrances & Doors	
<u>ADA Inaccessibilities</u>	
<ul style="list-style-type: none"> Interior door requires an excessive force to operate. 	
<u>Remedial Modifications</u>	
<ul style="list-style-type: none"> Most interior doors are inaccessible and too heavy to operate. It is proposed to inspect all interior door / accessible interior doors on the path of travel to make sure these comply with 2010 ADA Standards for accessible design Section 404.2.8, 404.2.8.2 & 404.2.9. 	
Lobbies & Corridors	
<u>ADA Inaccessibilities</u>	
<ul style="list-style-type: none"> Underside of the front Staircase is not protected and therefore has become protruding objects. Underside of the rear Staircase is not protected and therefore has become protruding object No handrails / guardrails provided at the central corridor which has level differences. 	
<u>Remedial Modifications</u>	
<ul style="list-style-type: none"> Refer to 2010 ADA Standards for accessible design Chapter 3, Section 307 & Fig. 307.2 for Technical Assistance regarding remedial modifications. 	

- Refer to 2010 ADA Standards for accessible design Chapter 3, Section 307 & Fig. 307.2 for Technical Assistance regarding remedial modifications.
- Edge protection and guard / handrails need to be provided at the upper edge of the space with level difference. It should be continuous with edge protection.
-

Rooms & Spaces

ADA Inaccessibilities

- Top landing at the front staircase is uneven and sloping.

Remedial Modifications

- Refer to 2010 ADA Standards for accessible design Section 504 and 505 and Figures 505.4, 505.5, 505.6 505.7.2 & 505.10.2 for further guidance on accessible stairs. Handrails have to be continuous on both sides and handrail extensions need to be provided.

Signage

ADA Inaccessibilities

-

Remedial Modifications

-

Vertical Circulation

ADA Inaccessibilities

-

Remedial Modifications

-

Toilet Rooms & Bathing Facilities

ADA Inaccessibilities

-

Remedial Modifications

-

Miscellaneous

ADA Inaccessibilities

-

Remedial Modifications

-

Notes:

This report has been generated from the S4 Surveys. Errors and Omissions are excepted.

Location: Janney Elementary School 4130 Albemarle ST. NW Washington, DC 20016		Survey Date: 01/25/2017
Survey conducted by: Mark Nutter Naquran Smith	Report completed by: Anwar Mahmood Architect (ADA) anwar.mahmood@dc.gov 202-727-9296	

Parking

ADA Inaccessibilities

- Parking lot has 56 Parking spaces with no Van accessible parking.
- No accessible route provided.

Remedial Modifications

- Parking facility to be redesigned to incorporate standard and van accessible parking spaces. Refer to 2010 ADA Standards for accessible design Section 208.2 & Fig. 502.2.
- On redesign of the Parking area, we need to make sure the access aisles connect to an accessible route. Refer to 2010 ADA Standards for accessible design Chapter 4, Section 402.
- Parking lot slopes on the accessible route, access aisles and accessible parking bays has to be modified to be accessible.
- A drop-of area / Loading Zone may be incorporated and designed to be accessible. Refer to 2010 ADA Standards for accessible design Section 502, 503 & Fig. 503.3.

Exterior Accessible Route

ADA Inaccessibilities

- Accessible route is sloped too steep..
- No detectable warnings provided on curb ramps.

Remedial Modifications

- Accessible route has to be in the state of good repair. It should be smooth and slip resistant.
- On redesign of the Parking area, we need to make sure the access aisles connect to an accessible route. Refer to 2010 ADA Standards for accessible design Chapter 4, Section 402.
- Wherever a route crosses a road or a differing traffic pattern, truncated domes need to be provided for the route to become accessible. Refer to 2010 ADA Standards for accessible design Chapter 7, Section 705.

Curb Ramps & Ramps

ADA Inaccessibilities

- Accessible ramp is sloped too steep (9.7%) at points.
- Railings are inaccessible.
- Ramp is not provided with edge protection.

Remedial Modifications

- Maximum allowable slope for an accessible ramp is 8.33% (1:12). Refer to 2010 ADA Standards for accessible design Section 405 & Fig. 405.7.
- The above Section / subsection needs to be referred for modifications to railings and edge protection.

Entrances & Doors

ADA Inaccessibilities

Remedial Modifications

-

Lobbies & Corridors

ADA Inaccessibilities

-

Remedial Modifications

-

Rooms & Spaces

ADA Inaccessibilities

-

Remedial Modifications

-

Signage

ADA Inaccessibilities

-

Remedial Modifications

-

Vertical Circulation

ADA Inaccessibilities

- Handrails to the stairs are not accessible.
- Elevator is out of service.

Remedial Modifications

- Refer to 2010 ADA Standards for accessible design Section 504 and 505 and Figures 505.4, 505.5, 505.6 505.7.2 & 505.10.2 for further guidance on accessible stairs. Handrails have to be continuous on both sides and handrail extensions need to be provided.
- Elevator need to be in state of good repair to be in service.

Toilet Rooms & Bathing Facilities

ADA Inaccessibilities

-

Remedial Modifications

-

Miscellaneous

ADA Inaccessibilities

-

Remedial Modifications

-

Notes:

This report has been generated from the S4 Surveys. Errors and Omissions are excepted.

Location: John Tyler Elementary School 1001 G Street SE Washington DC		Survey Date: 05/5/2017
Survey conducted by: Mark Nutter Naquran Smith	Report completed by: Anwar Mahmood Architect (ADA) anwar.mahmood@dc.gov 202-727-9296	

Parking

ADA Inaccessibilities

- No Parking spaces provided.

Remedial Modifications

-

Exterior Accessible Route

ADA Inaccessibilities

- Detectable warnings not provided at the curb ramps on the accessible route of travel.

Remedial Modifications

- Wherever a route crosses a road or a differing traffic pattern, truncated domes need to be provided for the route to become accessible. Refer to 2010 ADA Standards for accessible design Chapter 7, Section 705.

Curb Ramps & Ramps

ADA Inaccessibilities

- Curb ramps not provided with the Detectable warnings.
- Ramp is sloped too steep @9.3%.

Remedial Modifications

- Wherever a route crosses a road or a differing traffic pattern, truncated domes need to be provided for the route to become accessible. Refer to 2010 ADA Standards for accessible design Chapter 7, Section 705.
- Maximum allowable slope for an accessible ramp is 8.33% (1:12). Refer to 2010 ADA Standards for accessible design Section 405 & Fig. 405.7.

Entrances & Doors

ADA Inaccessibilities

- Directional signage to the accessible entrance is not provided.

Remedial Modifications

- *Entrances* shall be provided in accordance with 2010 ADA Standards for accessible design Chapter 2, Section 206.4. *Entrance* doors, doorways and gates shall comply with 404 and shall be on an *accessible* route complying with 402. Refer to 2010 ADA Standards for accessible design Section 703 and provided directional signage to the persons with disabilities towards accessible entrance.

Lobbies & Corridors

ADA Inaccessibilities

- Cafeteria on the lower level can be accessed only by stairs.

Remedial Modifications

- Project needs to be studied to explore the possibilities for addition of an elevator for existing Cafeteria to be wheelchair accessible.

Rooms & Spaces

ADA Inaccessibilities

-

Remedial Modifications

-

Signage

ADA Inaccessibilities

-

Remedial Modifications

-

Vertical Circulation

ADA Inaccessibilities

- Elevators not provided.
- Staircases are not accessible.
- Handrails extensions are not provided.

Remedial Modifications

- Refer to 2010 ADA Standards for accessible design Section 504 and 505 and Figures 505.4, 505.5, 505.6 505.7.2 & 505.10.2 for further guidance on accessible stairs. Handrails have to be continuous on both sides and handrail extensions need to be provided.
- Elevators need to comply with 2010 ADA Standards for accessible design Section 407 and all subsection.
- Additionally you may peruse Section 703 for general signage.

Toilet Rooms & Bathing Facilities

ADA Inaccessibilities

-

Remedial Modifications

-

Miscellaneous

ADA Inaccessibilities

-

Remedial Modifications

Etc.

Notes:

This report has been generated from the S4 Surveys. Errors and Omissions are excepted.

Location: John W. Ross Elementary School 1730 R Street NW Washington DC 20009		Survey Date: 01/18/2017
Survey conducted by: Mark Nutter Naquran Smith		Report completed by: Anwar Mahmood Architect (ADA) anwar.mahmood@dc.gov 202-727-9296

Parking

ADA Inaccessibilities

- No accessible access aisles in parking provided.
- Access aisle for the accessible parking is not in close proximity to the accessible entrance.

Remedial Modifications

- Parking facility to be redesigned to incorporate accessible access aisles. Refer to 2010 ADA Standards for accessible design Section 208.2 & Fig. 502.2.
- A drop-off area / Loading Zone may be incorporated and designed to be accessible. Refer to 2010 ADA Standards for accessible design Section 502, 503 & Fig. 503.3.

Exterior Accessible Route

ADA Inaccessibilities

-

Remedial Modifications

-

Curb Ramps & Ramps

ADA Inaccessibilities

-

Remedial Modifications

-

Entrances & Doors

ADA Inaccessibilities

- There is no accessible entrance provided.

Remedial Modifications

- Entrance needs to be redesigned to be accessible. Entrances shall be provided in accordance with 2010 ADA Standards for accessible design Chapter 2, Section 206.4. *Entrance* doors, doorways and gates shall comply with 404 and shall be on an *accessible* route complying with 402. Refer to 2010 ADA Standards for accessible design Section 703 and provided directional signage to the persons with disabilities towards accessible entrance.

Lobbies & Corridors

ADA Inaccessibilities

- Corridors are not accessible.

- Protruding objects in the corridors.
- Corridors provided with no turn around spaces.

Remedial Modifications

- Corridors need to be modified to be accessible. Lobbies and corridors needs to be modified for curbs, protruding objects etc. For Technical Assistance please refer to 2010 ADA Standards for accessible design Chapter 4 Section 401, 402, 403 & Section 307. It is further advised to peruse Section 301 to Section 305.

Rooms & Spaces

ADA Inaccessibilities

- Rooms and spaces are not accessible.
- There is no access aisle with turn around space.

Remedial Modifications

- Refer to 2010 ADA Standards for accessible design Chapter 4 Section 401, 402, 403 & Section 307. It is further advised to peruse Section 301 to Section 307

Signage

ADA Inaccessibilities

- All signage provided is in accessible.

Remedial Modifications

-

Vertical Circulation

ADA Inaccessibilities

- Survey shows no vertical access available.

Remedial Modifications

- Spaces need to be redesigned to incorporate an elevator for wheelchair accessibility. Elevators need to comply with 2010 ADA Standards for accessible design Section 407 and all subsection.
-

Toilet Rooms & Bathing Facilities

ADA Inaccessibilities

- Restrooms / toilets are not accessible.
- Directional signage to accessible toilet is not provided.

Remedial Modifications

- All toilets / restroom facilities need to be reworked / redesigned to be accessible. Refer to 2010 ADA Standards for accessible design Section 603, 604, 605 and Section 606 for further modifications.
- Additionally you may peruse Section 703 for general signage and Directional signage to the accessible entities.

Miscellaneous

ADA Inaccessibilities

- A small inaccessible cafeteria is provided.

Remedial Modifications

- Spaces need to be redesigned to be accessible for an accessible cafeteria.

Notes:



This report has been generated from
excepted.

the S4 Surveys. Errors and Omissions are

Location: Johnson Middle School 1400 Bruce Place SE Washington, DC 20020	Survey Date: 06/15/2017
Survey conducted by: Mark Nutter Naquran Smith	Report completed by: Anwar Mahmood Architect (ADA) anwar.mahmood@dc.gov 202-727-9296

Parking

ADA Inaccessibilities

- Parking lot has 35 Parking spaces with no accessible parking.
- No access aisles provided.
- Detectable warnings not provided.

Remedial Modifications

- Parking facility to be redesigned to incorporate standard and van accessible parking spaces. Refer to 2010 ADA Standards for accessible design Section 208.2 & Fig. 502.2.
- On redesign of the Parking area, we need to make sure the access aisles connect to an accessible route. Refer to 2010 ADA Standards for accessible design Chapter 4, Section 402.
- Parking lot slopes on the accessible route, access aisles and accessible parking bays has to be modified to be accessible.
- Wherever a route crosses a road or a differing traffic pattern, truncated domes need to be provided for the route to become accessible. Refer to 2010 ADA Standards for accessible design Chapter 7, Section 705.
- A drop-of area / Loading Zone may be incorporated and designed to be accessible. Refer to 2010 ADA Standards for accessible design Section 502, 503 & Fig. 503.3.

Exterior Accessible Route

ADA Inaccessibilities

- No detectable warnings provided on curb ramps.

Remedial Modifications

- Wherever a route crosses a road or a differing traffic pattern, truncated domes need to be provided for the route to become accessible. Refer to 2010 ADA Standards for accessible design Chapter 7, Section 705.

Curb Ramps & Ramps

ADA Inaccessibilities

-

Remedial Modifications

-

Entrances & Doors

ADA Inaccessibilities

- Only 1 out of 5 entrances is accessible.
- Directional signage to the accessible entrance is not provided.

- Interior door requires excessive force to operate.

Remedial Modifications

- *Entrances* shall be provided in accordance with 2010 ADA Standards for accessible design Chapter 2, Section 206.4. *Entrance* doors, doorways and gates shall comply with 404 and shall be on an *accessible* route complying with 402. Refer to 2010 ADA Standards for accessible design Section 703 and provided directional signage to the persons with disabilities towards accessible entrance.
- Most interior doors are inaccessible and too heavy to operate. It is proposed to inspect all interior door / accessible interior doors on the path of travel to make sure these comply with 2010 ADA Standards for accessible design Section 404.2.8, 404.2.8.2 & 404.2.9.

Lobbies & Corridors

ADA Inaccessibilities

-

Remedial Modifications

-

Rooms & Spaces

ADA Inaccessibilities

-

Remedial Modifications

-

Signage

ADA Inaccessibilities

- Inaccessible signage.

Remedial Modifications

- Refer to 2010 ADA Standards for accessible design Section 703.

Vertical Circulation

ADA Inaccessibilities

- Handrails to the stairs are not accessible.
- Elevator controls are inaccessible.

Remedial Modifications

- Refer to 2010 ADA Standards for accessible design Section 504 and 505 and Figures 505.4, 505.5, 505.6 505.7.2 & 505.10.2 for further guidance on accessible stairs. Handrails have to be continuous on both sides and handrail extensions need to be provided.
- Refer to 2010 ADA Standards for accessible design Section 308.

Toilet Rooms & Bathing Facilities

ADA Inaccessibilities

- Accessible signage is not provided to the restroom doors.
- An array of Urinals are installed too high.
- Plumbing under the vanity / sink is exposed and not insulated.

Remedial Modifications

- Refer to 2010 ADA Standards for accessible design Section 703, 703.6.1, for further modifications.
- Accessible restrooms needs to be revisited to redesign for accessibility. Refer to 2010 ADA Standards for accessible design Chapter 6 and Section 603 onward relating to the inaccessibilities.

Miscellaneous

ADA Inaccessibilities

-

Remedial Modifications

-

Notes:

This report has been generated from the S4 Surveys. Errors and Omissions are excepted.

Location: Katcham Elementary School 1919 15 th . Street SE Washington DC 20020		Survey Date: 04/27/2017
Survey conducted by: Mark Nutter Naquran Smith	Report completed by: Anwar Mahmood Architect (ADA) anwar.mahmood@dc.gov 202-727-9296	

Parking

ADA Inaccessibilities

- No accessible parking spaces provided in a parking lot comprising 24 bays.
- At locations parking lot has a slope of 12.4%.

Remedial Modifications

- Parking facility to be redesigned to incorporate standard and van accessible parking spaces. Refer to 2010 ADA Standards for accessible design Section 208.2 & Fig. 502.2.
- A drop-of area / Loading Zone may be incorporated and designed to be accessible. Refer to 2010 ADA Standards for accessible design Section 502, 503 & Fig. 503.3.

Exterior Accessible Route

ADA Inaccessibilities

- There is a 4" curb at the accessible route.
- Detectable warnings not provided at the curb ramps on the accessible route of travel.

Remedial Modifications

- On redesign of the Parking area, we need to make sure the access aisles connect to an accessible route. Refer to 2010 ADA Standards for accessible design Chapter 4, Section 402.
- Wherever a route crosses a road or a differing traffic pattern, truncated domes need to be provided for the route to become accessible. Refer to 2010 ADA Standards for accessible design Chapter 7, Section 705.

Curb Ramps & Ramps

ADA Inaccessibilities

- Inaccessible railings provided at the ramp.
- Ramp width is inaccessible.
- Inaccessible landings provided at the ramp.

Remedial Modifications

- Refer to 2010 ADA Standards for accessible design Section 405 & Fig. 405.9. 2
- Minimum clear width of a ramp is 36" as per 2010 ADA Standards.
- Refer to 2010 ADA Standards for accessible design Section 405 & Fig. 405.7.

Entrances & Doors

ADA Inaccessibilities

- There is one accessible entrance out of a total of three entrances.
- Entrance door has un-ramped curbs.
- Accessible spaces are not provided at the entrance.
- Interior doors are too heavy to operate.

Remedial Modifications

- *Entrances* shall be provided in accordance with 2010 ADA Standards for accessible design Chapter 2, Section 206.4. *Entrance* doors, doorways and gates shall comply with 404 and shall be on an *accessible* route complying with 402. Refer to 2010 ADA Standards for accessible design Section 703 and provided directional signage to the persons with disabilities towards accessible entrance.
- Most interior doors are inaccessible and too heavy to operate. It is proposed to inspect all interior door / accessible interior doors on the path of travel to make sure these comply with 2010 ADA Standards for accessible design Section 404.2.8, 404.2.8.2 & 404.2.9.

Lobbies & Corridors

ADA Inaccessibilities

-

Remedial Modifications

-

Rooms & Spaces

ADA Inaccessibilities

-

Remedial Modifications

-

Signage

ADA Inaccessibilities

-

Remedial Modifications

-

Vertical Circulation

ADA Inaccessibilities

- Stairs have inaccessible handrails.

Remedial Modifications

- Refer to 2010 ADA Standards for accessible design Section 504 and 505 and Figures 505.4, 505.5, 505.6 505.7.2 & 505.10.2 for further guidance on accessible stairs. Handrails have to be continuous on both sides and handrail extensions need to be provided.
- Additionally you may peruse Section 703 for general signage.

Toilet Rooms & Bathing Facilities

ADA Inaccessibilities

- Directional signage not provided to the accessible toilet.
- Vanity plumbing not insulated.
- Inaccessible coat hooks.

Remedial Modifications

- Directional signage needs to be provided to all accessible restrooms.
- Vanity plumbing needs to be insulated so as to make sure PWD does not come in contact with hot or

cold plumbing under the vanity sink.

- Coat hooks need to be lowered to a height of 48" AFF and not lower than 27" AFF.
- Refer to 2010 ADA Standards for accessible design Section 603, 604, 605 and Section 606 for further modifications.

Miscellaneous

ADA Inaccessibilities

-

Remedial Modifications

-

Notes:

This report has been generated from the S4 Surveys. Errors and Omissions are excepted.

Location: Kelly Miller Middle School 301 49 th . Street NE Washington, DC 20019		Survey Date: 03/21/2017
Survey conducted by: Mark Nutter Naquran Smith	Report completed by: Anwar Mahmood Architect (ADA) anwar.mahmood@dc.gov 202-727-9296	

Parking

ADA Inaccessibilities

- Parking lot has 42 Parking spaces with no van accessible parking.
- No access aisles provided.
- No accessible route provided.
- Accessible signage not provided.

Remedial Modifications

- Parking facility to be redesigned to incorporate standard and van accessible parking spaces. Refer to 2010 ADA Standards for accessible design Section 208.2 & Fig. 502.2.
- On redesign of the Parking area, we need to make sure the access aisles connect to an accessible route. Refer to 2010 ADA Standards for accessible design Chapter 4, Section 402.
- Parking lot slopes on the accessible route, access aisles and accessible parking bays has to be modified to be accessible.
- Refer to 2010 ADA Standards for accessible design Section 703 for accessible signage.
- A drop-off area / Loading Zone may be incorporated and designed to be accessible. Refer to 2010 ADA Standards for accessible design Section 502, 503 & Fig. 503.3.

Exterior Accessible Route

ADA Inaccessibilities

- Accessible route is too steep (13.9% slope).
- Inaccessible cross slope..
- No detectable warnings provided on curb ramps.

Remedial Modifications

- Accessible route has to be in the state of good repair. It should be smooth and slip resistant.
- On redesign of the Parking area, we need to make sure the access aisles connect to an accessible route. Refer to 2010 ADA Standards for accessible design Chapter 4, Section 402.
- Wherever a route crosses a road or a differing traffic pattern, truncated domes need to be provided for the route to become accessible. Refer to 2010 ADA Standards for accessible design Chapter 7, Section 705.

Curb Ramps & Ramps

ADA Inaccessibilities

-

Remedial Modifications

-

Entrances & Doors

ADA Inaccessibilities

- Directional signage to the accessible entrance is not provided.
- Interior door requires a force of 9 lbs. to operate.

Remedial Modifications

- *Entrances* shall be provided in accordance with 2010 ADA Standards for accessible design Chapter 2, Section 206.4. *Entrance* doors, doorways and gates shall comply with 404 and shall be on an *accessible* route complying with 402. Refer to 2010 ADA Standards for accessible design Section 703 and provided directional signage to the persons with disabilities towards accessible entrance.
- Most interior doors are inaccessible and too heavy to operate. It is proposed to inspect all interior door / accessible interior doors on the path of travel to make sure these comply with 2010 ADA Standards for accessible design Section 404.2.8, 404.2.8.2 & 404.2.9.

Lobbies & Corridors

ADA Inaccessibilities

-

Remedial Modifications

-

Rooms & Spaces

ADA Inaccessibilities

-

Remedial Modifications

-

Signage

ADA Inaccessibilities

-

Remedial Modifications

-

Vertical Circulation

ADA Inaccessibilities

-

Remedial Modifications

-

Toilet Rooms & Bathing Facilities

ADA Inaccessibilities

-

Remedial Modifications

-

Miscellaneous

ADA Inaccessibilities

-

Remedial Modifications

-

Notes:



This report has been generated from
excepted.

the S4 Surveys. Errors and Omissions are

Location: Kramer Middle School 1700 Q Street SE Washington, DC 20020		Survey Date: 05/02/2017
Survey conducted by: Mark Nutter Naquran Smith	Report completed by: Anwar Mahmood Architect (ADA) anwar.mahmood@dc.gov 202-727-9296	

Parking

ADA Inaccessibilities

- Parking lot has 96 Parking spaces with no accessible parking.
- Slopes at parking lot varies at 11.8%.
- No access aisles provided.
- No accessible route provided.

Remedial Modifications

- Parking facility to be redesigned to incorporate standard and van accessible parking spaces. Refer to 2010 ADA Standards for accessible design Section 208.2 & Fig. 502.2.
- On redesign of the Parking area, we need to make sure the access aisles connect to an accessible route. Refer to 2010 ADA Standards for accessible design Chapter 4, Section 402.
- Parking lot slopes on the accessible route, access aisles and accessible parking bays has to be modified to be accessible.
- A drop-of area / Loading Zone may be incorporated and designed to be accessible. Refer to 2010 ADA Standards for accessible design Section 502, 503 & Fig. 503.3.

Exterior Accessible Route

ADA Inaccessibilities

- Accessible route is in state of gross disrepair.
- Concrete sidewalk is damaged.
- No detectable warnings provided on curb ramps.

Remedial Modifications

- Accessible route has to be in the state of good repair. It should be smooth and slip resistant.
- On redesign of the Parking area, we need to make sure the access aisles connect to an accessible route. Refer to 2010 ADA Standards for accessible design Chapter 4, Section 402.
- Wherever a route crosses a road or a differing traffic pattern, truncated domes need to be provided for the route to become accessible. Refer to 2010 ADA Standards for accessible design Chapter 7, Section 705.

Curb Ramps & Ramps

ADA Inaccessibilities

- Accessible ramp is sloped too steep at points.
- Railings are inaccessible.
- Ramp is not provided with edge protection.

Remedial Modifications

- Maximum allowable slope for an accessible ramp is 8.33% (1:12). Refer to 2010 ADA Standards for accessible design Section 405 & Fig. 405.7.
- The above Section / subsection needs to be referred for modifications to railings and edge protection.

Entrances & Doors

ADA Inaccessibilities

- Directional signage to the accessible entrance is not provided.
- Interior door requires a force of 15lbs. to operate.

Remedial Modifications

- *Entrances* shall be provided in accordance with 2010 ADA Standards for accessible design Chapter 2, Section 206.4. *Entrance* doors, doorways and gates shall comply with 404 and shall be on an *accessible* route complying with 402. Refer to 2010 ADA Standards for accessible design Section 703 and provided directional signage to the persons with disabilities towards accessible entrance.
- Most interior doors are inaccessible and too heavy to operate. It is proposed to inspect all interior door / accessible interior doors on the path of travel to make sure these comply with 2010 ADA Standards for accessible design Section 404.2.8, 404.2.8.2 & 404.2.9.

Lobbies & Corridors

ADA Inaccessibilities

-

Remedial Modifications

-

Rooms & Spaces

ADA Inaccessibilities

-

Remedial Modifications

-

Signage

ADA Inaccessibilities

-

Remedial Modifications

-

Vertical Circulation

ADA Inaccessibilities

- Handrails to the stairs are not accessible.

Remedial Modifications

- Refer to 2010 ADA Standards for accessible design Section 504 and 505 and Figures 505.4, 505.5, 505.6 505.7.2 & 505.10.2 for further guidance on accessible stairs. Handrails have to be continuous on both sides and handrail extensions need to be provided.

Toilet Rooms & Bathing Facilities

ADA Inaccessibilities

- Accessible signage is not provided to the restroom doors.
- Toilet paper dispenser is installed too high.

- An array of Urinals are installed too close to each other.
- Plumbing under the vanity / sink is exposed and not insulated.

Remedial Modifications

- Refer to 2010 ADA Standards for accessible design Section 703, 703.6.1, for further modifications.
- Accessible restrooms needs to be revisited to redesign for accessibility. Refer to 2010 ADA Standards for accessible design Chapter 6 and Section 603 onward relating to the inaccessibilities.

Miscellaneous

ADA Inaccessibilities

-

Remedial Modifications

-

Notes:

This report has been generated from the S4 Surveys. Errors and Omissions are excepted.

Location: Lackie Elementary School 4201 MLK Ave. SW Washington, DC 20032		Survey Date: 06/20/2017
Survey conducted by: Mark Nutter Naquran Smith	Report completed by: Anwar Mahmood Architect (ADA) anwar.mahmood@dc.gov 202-727-9296	

Parking <u>ADA Inaccessibilities</u> • <u>Remedial Modifications</u> •
Exterior Accessible Route <u>ADA Inaccessibilities</u> • <u>Remedial Modifications</u> •
Curb Ramps & Ramps <u>ADA Inaccessibilities</u> • <u>Remedial Modifications</u> •
Entrances & Doors <u>ADA Inaccessibilities</u> • <u>Remedial Modifications</u> •
Lobbies & Corridors <u>ADA Inaccessibilities</u> • <u>Remedial Modifications</u> •
Rooms & Spaces <u>ADA Inaccessibilities</u> • <u>Remedial Modifications</u> •
Signage

ADA Inaccessibilities

-

Remedial Modifications

-

Vertical Circulation

ADA Inaccessibilities

-

Remedial Modifications

-

Toilet Rooms & Bathing Facilities

ADA Inaccessibilities

-

Remedial Modifications

-

Miscellaneous

ADA Inaccessibilities

-

Remedial Modifications

-

Notes:

This report has been generated from the S4 Surveys. Errors and Omissions are excepted.

Facility under construction.

Location: Langdon Education Campus 1900 Evarts Street NE Washington DC		Survey Date: 02/24/2017
Survey conducted by: Mark Nutter Naquran Smith	Report completed by: Anwar Mahmood Architect (ADA) anwar.mahmood@dc.gov 202-727-9296	

Parking

ADA Inaccessibilities

- Accessible route from accessible parking is not defined.
- Accessible route is not provided with detectable warnings.

Remedial Modifications

- Parking facility to be revisited to incorporate a defined accessible route from standard and van accessible parking spaces. Refer to 2010 ADA Standards for accessible design Section 208.2 & Fig. 502.2.
- On redesign of the Parking area, we need to make sure the access aisles connect to an accessible route. Refer to 2010 ADA Standards for accessible design Chapter 4, Section 402.
- Parking lot slopes on the accessible route, access aisles and accessible parking bays has to be modified to be accessible.
- Wherever a route crosses a road or a differing traffic pattern, truncated domes need to be provided for the route to become accessible. Refer to 2010 ADA Standards for accessible design Chapter 7, Section 705.
- A drop-of area / Loading Zone may be incorporated and designed to be accessible. Refer to 2010 ADA Standards for accessible design Section 502, 503 & Fig. 503.3.

Exterior Accessible Route

ADA Inaccessibilities

- Accessible route is not provided with detectable warnings.
- Accessible Route is too steep at points.

Remedial Modifications

- Wherever a route crosses a road or a differing traffic pattern, truncated domes need to be provided for the route to become accessible. Refer to 2010 ADA Standards for accessible design Chapter 7, Section 705.
- Accessible route has to be in the state of good repair. It should be smooth and slip resistant.
- On redesign of the Parking area or approaching from public transport stop or a loading zone we need to make sure the access aisles connect to an accessible route. Refer to 2010 ADA Standards for accessible design Chapter 4, Section 402. 403.

Curb Ramps & Ramps

ADA Inaccessibilities

-

Remedial Modifications

-

Entrances & Doors

ADA Inaccessibilities

- Directional signage is not provided to the accessible entrance.
- Chair lift at the entrance is in need of repairs.

Remedial Modifications

- *Entrances* shall be provided in accordance with 2010 ADA Standards for accessible design Chapter 2, Section 206.4. *Entrance* doors, doorways and gates shall comply with 404 and shall be on an *accessible* route complying with 402. Refer to 2010 ADA Standards for accessible design Section 703 and provided directional signage to the persons with disabilities towards accessible entrance.
- All features or elements of support for accessibility need to be in state of good repair at all times.

Lobbies & Corridors

ADA Inaccessibilities

-

Remedial Modifications

-

Rooms & Spaces

ADA Inaccessibilities

-

Remedial Modifications

-

Signage

ADA Inaccessibilities

-

Remedial Modifications

-

Vertical Circulation

ADA Inaccessibilities

-

Remedial Modifications

-

Toilet Rooms & Bathing Facilities

ADA Inaccessibilities

- Directional signage to the accessible toilet is not provided.

Remedial Modifications

- Refer to 2010 ADA Standards for accessible design Section 703, 703.6.1, for further modifications.
- Directional signage needs to be provided on conspicuous locations on the accessible path of travel.

Miscellaneous

ADA Inaccessibilities

-

Remedial Modifications

-

Notes:

This report has been generated from the S4 Surveys. Errors and Omissions are excepted.

Location: Langley Elementary School 101 T Street NE Washington DC 20002		Survey Date: 02/27/2017
Survey conducted by: Mark Nutter Naquran Smith	Report completed by: Anwar Mahmood Architect (ADA) anwar.mahmood@dc.gov 202-727-9296	

Parking

ADA Inaccessibilities

- No accessible parking provided in a parking lot comprising 34 bays.

Remedial Modifications

- Parking facility to be redesigned to incorporate standard and van accessible parking spaces. Refer to 2010 ADA Standards for accessible design Section 208.2 & Fig. 502.2.
- On redesign of the Parking area, we need to make sure the access aisles connect to an accessible route. Refer to 2010 ADA Standards for accessible design Chapter 4, Section 402.
- A drop-off area / Loading Zone may be incorporated and designed to be accessible. Refer to 2010 ADA Standards for accessible design Section 502, 503 & Fig. 503.3.

Exterior Accessible Route

ADA Inaccessibilities

- Designated accessible route not provided from parking lot.

Remedial Modifications

- Accessible route has to be incorporated from the accessible parking spaces leading to the facility entrances and beyond.
- On redesign of the Parking area, we need to make sure the access aisles connect to an accessible route. Refer to 2010 ADA Standards for accessible design Chapter 4, Section 402.

Curb Ramps & Ramps

ADA Inaccessibilities

-

Remedial Modifications

-

Entrances & Doors

ADA Inaccessibilities

- No accessible entrance provided.
- No accessible clear maneuvering space provided at the entrances.

Remedial Modifications

- Entrances* shall be provided in accordance with 2010 ADA Standards for accessible design Chapter 2, Section 206.4. *Entrance* doors, doorways and gates shall comply with 404 fig. 404.2.3, 404.2.4.1 and 404.2.4.2 and shall be on an *accessible* route complying with 402.

Lobbies & Corridors

ADA Inaccessibilities

-

Remedial Modifications

-

Rooms & Spaces

ADA Inaccessibilities

-

Remedial Modifications

-

Signage

ADA Inaccessibilities

- Accessible signage not provided.

Remedial Modifications

- Refer to 2010 ADA Standards for accessible design Section 703, 703.6.1, for further modifications.

Vertical Circulation

ADA Inaccessibilities

- Handrails to the stairs are not accessible.

Remedial Modifications

- Refer to 2010 ADA Standards for accessible design Section 504 and 505 and Figures 505.4, 505.5, 505.6 505.7.2 & 505.10.2 for further guidance on accessible stairs. Handrails have to be continuous on both sides and handrail extensions need to be provided.

Toilet Rooms & Bathing Facilities

ADA Inaccessibilities

- Directional signage to the accessible toilet is not provided.

Remedial Modifications

- Refer to 2010 ADA Standards for accessible design Section 703, 703.6.1, for further modifications.

Miscellaneous

ADA Inaccessibilities

-

Remedial Modifications

-

Notes:

This report has been generated from the S4 Surveys. Errors and Omissions are excepted.

Location: Ludlow Taylor Elementary School 659 G Street NE Washington DC 20002		Survey Date: 03/06/2017
Survey conducted by: Mark Nutter Naquran Smith	Report completed by: Anwar Mahmood Architect (ADA) anwar.mahmood@dc.gov 202-727-9296	

Parking

ADA Inaccessibilities

- Out of 43 parking spaces, there is no accessible parking space provided.

Remedial Modifications

- Parking facility to be redesigned to incorporate standard and van accessible parking spaces. Refer to 2010 ADA Standards for accessible design Section 208.2 & Fig. 502.2.
- On redesign of the Parking area, we need to make sure the access aisles connect to an accessible route. Refer to 2010 ADA Standards for accessible design Chapter 4, Section 402.
- A drop-off area / Loading Zone may be incorporated and designed to be accessible. Refer to 2010 ADA Standards for accessible design Section 502, 503 & Fig. 503.3.

Exterior Accessible Route

ADA Inaccessibilities

-

Remedial Modifications

-

Curb Ramps & Ramps

ADA Inaccessibilities

-

Remedial Modifications

-

Entrances & Doors

ADA Inaccessibilities

- Thresholds are not beveled.

Remedial Modifications

- Thresholds if provided at doorways, shall be ½" high maximum. Raised thresholds and changes in level at doorways shall comply with 2010 ADA Standards Section 302 and 303. Please see the section 404.2.5 and Exception.
- *Entrances* shall be provided in accordance with 2010 ADA Standards for accessible design Chapter 2, Section 206.4. *Entrance* doors, doorways and gates shall comply with 404 and shall be on an *accessible* route complying with 402.

Lobbies & Corridors

ADA Inaccessibilities

-

Remedial Modifications

-

Rooms & Spaces

ADA Inaccessibilities

-

Remedial Modifications

-

Signage

ADA Inaccessibilities

- Directional signage to accessible facilities in the building is not provided.

Remedial Modifications

- Directional signage to accessible facilities in the building needs to be provided.
- Refer to 2010 ADA Standards for accessible design Section 703 for Signage Standards.

Vertical Circulation

ADA Inaccessibilities

- Handrails to the stairs are not accessible.
- Handrail extensions are not provided.
- Accessible Emergency alarm system is not provided.

Remedial Modifications

- Refer to 2010 ADA Standards for accessible design Section 504 and 505 and Figures 505.4, 505.5, 505.6 505.7.2 & 505.10.2 for further guidance on accessible stairs. Handrails have to be continuous on both sides and handrail extensions need to be provided.
- Fire alarm systems shall have permanently installed audible and visible alarms complying with NFPA 72 (1999 or 2002 edition) (incorporated by reference, see “Referenced Standards” in Chapter 1), except that the maximum allowable sound level of audible notification Appliances complying with section 4-3.2.1 of NFPA 72 (1999 edition) shall have a sound level no more than 110 dB at the minimum hearing distance from the audible appliance.

Toilet Rooms & Bathing Facilities

ADA Inaccessibilities

-

Remedial Modifications

-

Miscellaneous

ADA Inaccessibilities

-

Remedial Modifications

-

Notes:

This report has been generated from the S4 Surveys. Errors and Omissions are excepted.

Location: Luke C Moore High School 1001 Monroe Street NE Washington DC 20017		Survey Date: 04/20/2017
Survey conducted by: Mark Nutter Naquran Smith	Report completed by: Anwar Mahmood Architect (ADA) anwar.mahmood@dc.gov 202-727-9296	

Parking	
<u>ADA Inaccessibilities</u> <ul style="list-style-type: none"> • Van accessible parking spaces not provided. 	
<u>Remedial Modifications</u> <ul style="list-style-type: none"> • Parking facility to be redesigned to incorporate van accessible parking spaces. Refer to 2010 ADA Standards for accessible design Section 208.2 & Fig. 502.2. • On redesign of the Parking area, we need to make sure the access aisles connect to an accessible route. Refer to 2010 ADA Standards for accessible design Chapter 4, Section 402. • Parking lot slopes on the accessible route, access aisles and accessible parking bays has to be modified to be accessible. • A drop-off area / Loading Zone may be incorporated and designed to be accessible. Refer to 2010 ADA Standards for accessible design Section 502, 503 & Fig. 503.3. 	
Exterior Accessible Route	
<u>ADA Inaccessibilities</u> <ul style="list-style-type: none"> • 	
<u>Remedial Modifications</u> <ul style="list-style-type: none"> • 	
Curb Ramps & Ramps	
<u>ADA Inaccessibilities</u> <ul style="list-style-type: none"> • 	
<u>Remedial Modifications</u> <ul style="list-style-type: none"> • 	
Entrances & Doors	
<u>ADA Inaccessibilities</u> <ul style="list-style-type: none"> • 	
<u>Remedial Modifications</u> <ul style="list-style-type: none"> • 	
Lobbies & Corridors	
<u>ADA Inaccessibilities</u> <ul style="list-style-type: none"> • 	
<u>Remedial Modifications</u> <ul style="list-style-type: none"> • 	

Rooms & Spaces
<u>ADA Inaccessibilities</u> <ul style="list-style-type: none"> • <u>Remedial Modifications</u> <ul style="list-style-type: none"> •
Signage
<u>ADA Inaccessibilities</u> <ul style="list-style-type: none"> • <u>Remedial Modifications</u> <ul style="list-style-type: none"> •
Vertical Circulation
<u>ADA Inaccessibilities</u> <ul style="list-style-type: none"> • <u>Remedial Modifications</u> <ul style="list-style-type: none"> •
Toilet Rooms & Bathing Facilities
<u>ADA Inaccessibilities</u> <ul style="list-style-type: none"> • <u>Remedial Modifications</u> <ul style="list-style-type: none"> •
Miscellaneous
<u>ADA Inaccessibilities</u> <ul style="list-style-type: none"> • <u>Remedial Modifications</u> <ul style="list-style-type: none"> •
Notes:

This report has been generated from the S4 Surveys. Errors and Omissions are excepted.

This seems to be an incomplete survey.

Location: Malcolm X Middle School 1500 Mississippi Ave. SE Washington, DC 20032	Survey Date: 05/12/2017
Survey conducted by: Mark Nutter Naquran Smith	Report completed by: Anwar Mahmood Architect (ADA) anwar.mahmood@dc.gov 202-727-9296

Parking

ADA Inaccessibilities

- Parking lot has 44 Parking spaces with no accessible parking.

Remedial Modifications

- Parking facility to be redesigned to incorporate standard and van accessible parking spaces. Refer to 2010 ADA Standards for accessible design Section 208.2 & Fig. 502.2.
- On redesign of the Parking area, we need to make sure the access aisles connect to an accessible route. Refer to 2010 ADA Standards for accessible design Chapter 4, Section 402.
- Parking lot slopes on the accessible route, access aisles and accessible parking bays has to be modified to be accessible.
- A drop-off area / Loading Zone may be incorporated and designed to be accessible. Refer to 2010 ADA Standards for accessible design Section 502, 503 & Fig. 503.3.

Exterior Accessible Route

ADA Inaccessibilities

- No accessible route provided.

Remedial Modifications

- Accessible route has to be in the state of good repair. It should be smooth and slip resistant.
- On redesign of the Parking area, we need to make sure the access aisles connect to an accessible route. Refer to 2010 ADA Standards for accessible design Chapter 4, Section 402.
- Wherever a route crosses a road or a differing traffic pattern, truncated domes need to be provided for the route to become accessible. Refer to 2010 ADA Standards for accessible design Chapter 7, Section 705.

Curb Ramps & Ramps

ADA Inaccessibilities

- No accessible ramps provided.

Remedial Modifications

- Maximum allowable slope for an accessible ramp is 8.33% (1:12). Refer to 2010 ADA Standards for accessible design Section 405 & Fig. 405.7.
- The above Section / subsection needs to be referred for modifications to railings and edge protection.

Entrances & Doors

ADA Inaccessibilities

- Directional signage to the accessible entrance is not provided.

- Interior door requires accessible force to operate.

Remedial Modifications

- *Entrances* shall be provided in accordance with 2010 ADA Standards for accessible design Chapter 2, Section 206.4. *Entrance* doors, doorways and gates shall comply with 404 and shall be on an *accessible* route complying with 402. Refer to 2010 ADA Standards for accessible design Section 703 and provided directional signage to the persons with disabilities towards accessible entrance.
- Most interior doors are inaccessible and too heavy to operate. It is proposed to inspect all interior door / accessible interior doors on the path of travel to make sure these comply with 2010 ADA Standards for accessible design Section 404.2.8, 404.2.8.2 & 404.2.9.

Lobbies & Corridors

ADA Inaccessibilities

-

Remedial Modifications

-

Rooms & Spaces

ADA Inaccessibilities

- Inaccessible spaces.

Remedial Modifications

- Facility needs to be revisited for accessibility modifications.

Signage

ADA Inaccessibilities

- Inaccessible signage.

Remedial Modifications

- Refer to 2010 ADA Standards for accessible design Section 703.

Vertical Circulation

ADA Inaccessibilities

- Handrails to the stairs are not accessible.

Remedial Modifications

- Refer to 2010 ADA Standards for accessible design Section 504 and 505 and Figures 505.4, 505.5, 505.6 505.7.2 & 505.10.2 for further guidance on accessible stairs. Handrails have to be continuous on both sides and handrail extensions need to be provided.

Toilet Rooms & Bathing Facilities

ADA Inaccessibilities

- Inaccessible restrooms.

Remedial Modifications

- Restrooms required to be redesigned for accessibility.
- Refer to 2010 ADA Standards for accessible design Section 703, 703.6.1, for further modifications.
- Accessible restrooms needs to be revisited to redesign for accessibility. Refer to 2010 ADA Standards for accessible design Chapter 6 and Section 603 onward relating to the inaccessibilities.

Miscellaneous

ADA Inaccessibilities

-

Remedial Modifications

-

Notes:

This report has been generated from the S4 Surveys. Errors and Omissions are excepted.

This facility is grossly inaccessible and needs extensive modifications.

Location: Marie Reed Elementary School 2201 18 th . Street NW Washington DC 20009		Survey Date: 01/17/2017
Survey conducted by: Mark Nutter Naquran Smith	Report completed by: Anwar Mahmood Architect (ADA) anwar.mahmood@dc.gov 202-727-9296	

Parking

ADA Inaccessibilities

- Access aisle is not provided close to the accessible entrance.

Remedial Modifications

- At accessible Parking area, we need to make sure the access aisles connect to an accessible route. Refer to 2010 ADA Standards for accessible design Chapter 4, Section 402.
- Parking lot slopes on the accessible route, access aisles and accessible parking bays has to be modified to be accessible.

Exterior Accessible Route

ADA Inaccessibilities

- No detectable warnings provided on curb ramps.

Remedial Modifications

- Wherever a route crosses a road or a differing traffic pattern, truncated domes need to be provided for the route to become accessible. Refer to 2010 ADA Standards for accessible design Chapter 7, Section 705.

Curb Ramps & Ramps

ADA Inaccessibilities

- Ramp provided is not accessible.

Remedial Modifications

- Maximum allowable slope for an accessible ramp is 8.33% (1:12). Refer to 2010 ADA Standards for accessible design Section 405 & Fig. 405.7.
- The above Section / subsection needs to be referred for modifications to railings and edge protection.

Entrances & Doors

ADA Inaccessibilities

- Thresholds are not beveled or ramped.

Remedial Modifications

- Thresholds if provided at doorways, shall be ½" high maximum. Raised thresholds and changes in level at doorways shall comply with 2010 ADA Standards Section 302 and 303. Please see the section 404.2.5 and Exception.
- *Entrances* shall be provided in accordance with 2010 ADA Standards for accessible design Chapter 2, Section 206.4. *Entrance* doors, doorways and gates shall comply with 404 and shall be on an *accessible*

route complying with 402.

-

Lobbies & Corridors

ADA Inaccessibilities

- Emergency alarm / warning system is not accessible.

Remedial Modifications

- Fire alarm systems shall have permanently installed audible and visible alarms complying with NFPA 72 (1999 or 2002 edition) (incorporated by reference, see “Referenced Standards” in Chapter 1), except that the maximum allowable sound level of audible notification Appliances complying with section 4-3.2.1 of NFPA 72 (1999 edition) shall have a sound level no more than 110 dB at the minimum hearing distance from the audible appliance. In addition, alarms in guest rooms required to provide communication features shall comply with sections 4-3 and 4-4 of NFPA 72 (1999 edition) or sections 7.4 and 7.5 of NFPA 72 (2002 edition).

Rooms & Spaces

ADA Inaccessibilities

- Inaccessible controls.
- Emergency alarm / warning system is not accessible Other concerns.

Remedial Modifications

- Refer to 2010 ADA Standards for accessible design Section 308.2 & Fig. 308.2.1 and Section 309 for Operable parts.
- Fire alarm systems shall have permanently installed audible and visible alarms complying with NFPA 72 (1999 or 2002 edition) (incorporated by reference, see “Referenced Standards” in Chapter 1), except that the maximum allowable sound level of audible notification Appliances complying with section 4-3.2.1 of NFPA 72 (1999 edition) shall have a sound level no more than 110 dB at the minimum hearing distance from the audible appliance. In addition, alarms in guest rooms required to provide communication features shall comply with sections 4-3 and 4-4 of NFPA 72 (1999 edition) or sections 7.4 and 7.5 of NFPA 72 (2002 edition).

-

Signage

ADA Inaccessibilities

- Inaccessible signage.

Remedial Modifications

- Refer to 2010 ADA Standards for accessible design Section 703 for compliance.

Vertical Circulation

ADA Inaccessibilities

-

Remedial Modifications

-

Toilet Rooms & Bathing Facilities

ADA Inaccessibilities

- Inaccessible restrooms.
- Inaccessible urinals and vanities.

Remedial Modifications

- Accessible restrooms needs to be revisited to redesign for accessibility. Refer to 2010 ADA Standards for accessible design Chapter 6 and Section 603 onward relating to the inaccessibilities.

Miscellaneous**ADA Inaccessibilities**

-

Remedial Modifications

-

Notes:

This report has been generated from the S4 Surveys. Errors and Omissions are excepted.

Location: McKinley Technology High School 151 T Street NE Washington DC 20002		Survey Date: 05/05/2017
Survey conducted by: Mark Nutter Naquran Smith	Report completed by: Anwar Mahmood Architect (ADA) anwar.mahmood@dc.gov 202-727-9296	

Parking
<u>ADA Inaccessibilities</u> <u>Remedial Modifications</u> •
Exterior Accessible Route
<u>ADA Inaccessibilities</u> <u>Remedial Modifications</u> •
Curb Ramps & Ramps
<u>ADA Inaccessibilities</u> <u>Remedial Modifications</u> •
Entrances & Doors
<u>ADA Inaccessibilities</u> <u>Remedial Modifications</u> •
Lobbies & Corridors
<u>ADA Inaccessibilities</u> • <u>Remedial Modifications</u> •
Rooms & Spaces
<u>ADA Inaccessibilities</u> • <u>Remedial Modifications</u> •
Signage
<u>ADA Inaccessibilities</u> • <u>Remedial Modifications</u> •
Vertical Circulation

ADA Inaccessibilities
Remedial Modifications

-

Toilet Rooms & Bathing Facilities

ADA Inaccessibilities

Remedial Modifications

-

Miscellaneous

ADA Inaccessibilities

-

Remedial Modifications

-

Notes:

This report has been generated from the S4 Surveys. Errors and Omissions are excepted.

Survey Document S4 is incomplete.

Location: Minor Elementary School 601 15 th . Street NE Washington DC 20002		Survey Date: 03/07/2017
Survey conducted by: Mark Nutter Naquran Smith	Report completed by: Anwar Mahmood Architect (ADA) anwar.mahmood@dc.gov 202-727-9296	

Parking

ADA Inaccessibilities

- Van accessible parking not provided.
- Accessible signage not provided.

Remedial Modifications

- Parking facility to be redesigned to incorporate standard and van accessible parking spaces. Refer to 2010 ADA Standards for accessible design Section 208.2 & Fig. 502.2.
- On redesign of the Parking area, we need to make sure the access aisles connect to an accessible route. Refer to 2010 ADA Standards for accessible design Chapter 4, Section 402.
- Parking lot slopes on the accessible route, access aisles and accessible parking bays has to be modified to be accessible.
- A drop-of area / Loading Zone may be incorporated and designed to be accessible. Refer to 2010 ADA Standards for accessible design Section 502, 503 & Fig. 503.3.

Exterior Accessible Route

ADA Inaccessibilities

- Curbs on the route not ramped.
- Detectable warnings not provided.

Remedial Modifications

- Accessible route has to be in the state of good repair. It should be smooth and slip resistant. All curbs need to be ramped with a slope not to exceed 8.33% (1:12).
- Wherever a route crosses a road or a differing traffic pattern, truncated domes need to be provided for the route to become accessible. Refer to 2010 ADA Standards for accessible design Chapter 7, Section 705.

Curb Ramps & Ramps

ADA Inaccessibilities

- Curb ramp has inaccessible varying slopes.
- Ramp slopes are inaccessible.

Remedial Modifications

- Maximum allowable slope for an accessible ramp is 8.33% (1:12). Refer to 2010 ADA Standards for accessible design Section 405 & Fig. 405.7.
- The above Section / subsection needs to be referred for modifications to railings and edge protection.

Entrances & Doors

ADA Inaccessibilities

- N/A

Remedial Modifications

-

Lobbies & Corridors

ADA Inaccessibilities

- N/A

-

Remedial Modifications

-

Rooms & Spaces

ADA Inaccessibilities

- N/A

Remedial Modifications

-

Signage

ADA Inaccessibilities

- N/A

Remedial Modifications

-

Vertical Circulation

ADA Inaccessibilities

- Handrails to the stairs are not accessible.

Remedial Modifications

- Refer to 2010 ADA Standards for accessible design Section 504 and 505 and Figures 505.4, 505.5, 505.6 505.7.2 & 505.10.2 for further guidance on accessible stairs. Handrails have to be continuous on both sides and handrail extensions need to be provided.

Toilet Rooms & Bathing Facilities

ADA Inaccessibilities

- N/A

Remedial Modifications

-

Miscellaneous

ADA Inaccessibilities

- N/A

Remedial Modifications

-

Notes:

This report has been generated from the S4 Surveys. Errors and Omissions are excepted.

Location: Martin Luther King Elementary School 3200 6 th . Street SE Washington DC 20032		Survey Date: 04/28/2017
Survey conducted by: Mark Nutter Naquran Smith	Report completed by: Anwar Mahmood Architect (ADA) anwar.mahmood@dc.gov 202-727-9296	

Parking

ADA Inaccessibilities

- Only one standard accessible parking provided

Remedial Modifications

- Parking facility to be redesigned to incorporate standard and van accessible parking spaces. Refer to 2010 ADA Standards for accessible design Section 208.2 & Fig. 502.2.
- On redesign of the Parking area, we need to make sure the access aisles connect to an accessible route. Refer to 2010 ADA Standards for accessible design Chapter 4, Section 402.
- Parking lot slopes on the accessible route, access aisles and accessible parking bays has to be modified to be accessible.
- A drop-off area / Loading Zone may be incorporated and designed to be accessible. Refer to 2010 ADA Standards for accessible design Section 502, 503 & Fig. 503.3.

Exterior Accessible Route

ADA Inaccessibilities

- Inaccessible route surface.
- Threshold is not ramped.

Remedial Modifications

- Accessible route has to be in the state of good repair. It should be smooth and slip resistant.
- On redesign of the Parking area, we need to make sure the access aisles connect to an accessible route. Refer to 2010 ADA Standards for accessible design Chapter 4, Section 402.
- Wherever a route crosses a road or a differing traffic pattern, truncated domes need to be provided for the route to become accessible. Refer to 2010 ADA Standards for accessible design Chapter 7, Section 705.

Curb Ramps & Ramps

ADA Inaccessibilities

- N/A

Remedial Modifications

-

Entrances & Doors

ADA Inaccessibilities

- N/A.

Remedial Modifications

•
Lobbies & Corridors
<u>ADA Inaccessibilities</u>
• <u>N/A</u>
<u>Remedial Modifications</u>
•
Rooms & Spaces
<u>ADA Inaccessibilities</u>
• <u>N/A</u>
<u>Remedial Modifications</u>
•
Signage
<u>ADA Inaccessibilities</u>
• N/A
<u>Remedial Modifications</u>
•
Vertical Circulation
<u>ADA Inaccessibilities</u>
• N/A
<u>Remedial Modifications</u>
•
Toilet Rooms & Bathing Facilities
<u>ADA Inaccessibilities</u>
• N/A
<u>Remedial Modifications</u>
•
Miscellaneous
<u>ADA Inaccessibilities</u>
• N/A
•
<u>Remedial Modifications</u>
•
Notes:

This report has been generated from the S4 Surveys. Errors and Omissions are excepted.

Location: MLK Elementary School 3200 6 th . Street SE Washington, DC 20032		Survey Date: 04/28/2017
Survey conducted by: Mark Nutter Naquran Smith	Report completed by: Anwar Mahmood Architect (ADA) anwar.mahmood@dc.gov 202-727-9296	

Parking

ADA Inaccessibilities

- Parking lot has 24 Parking spaces with no accessible parking.

Remedial Modifications

- Parking facility to be redesigned to incorporate standard and van accessible parking spaces. Refer to 2010 ADA Standards for accessible design Section 208.2 & Fig. 502.2.
- On redesign of the Parking area, we need to make sure the access aisles connect to an accessible route. Refer to 2010 ADA Standards for accessible design Chapter 4, Section 402.
- A drop-of area / Loading Zone may be incorporated and designed to be accessible. Refer to 2010 ADA Standards for accessible design Section 502, 503 & Fig. 503.3.

Exterior Accessible Route

ADA Inaccessibilities

- Accessible route is uneven.
- No detectable warnings provided on curb ramps.

Remedial Modifications

- Accessible route has to be in the state of good repair. It should be smooth and slip resistant.
- On redesign of the Parking area, we need to make sure the access aisles connect to an accessible route. Refer to 2010 ADA Standards for accessible design Chapter 4, Section 402.
- Wherever a route crosses a road or a differing traffic pattern, truncated domes need to be provided for the route to become accessible. Refer to 2010 ADA Standards for accessible design Chapter 7, Section 705.

Curb Ramps & Ramps

ADA Inaccessibilities

-

Remedial Modifications

-

Entrances & Doors

ADA Inaccessibilities

- Inaccessible Entry doors.

Remedial Modifications

- This aspect of the facility needs to be reassessed.
- *Entrances* shall be provided in accordance with 2010 ADA Standards for accessible design Chapter 2,

Section 206.4. *Entrance* doors, doorways and gates shall comply with 404 and shall be on an *accessible* route complying with 402. Refer to 2010 ADA Standards for accessible design Section 703 and provided directional signage to the persons with disabilities towards accessible entrance.

- Most interior doors are inaccessible and too heavy to operate. It is proposed to inspect all interior door / accessible interior doors on the path of travel to make sure these comply with 2010 ADA Standards for accessible design Section 404.2.8, 404.2.8.2 & 404.2.9.

Lobbies & Corridors

ADA Inaccessibilities

-

Remedial Modifications

-

Rooms & Spaces

ADA Inaccessibilities

- EAS is inaccessible.

Remedial Modifications

- Refer to 2010 ADA Standards for accessible design Section 702 for modifications.

Signage

ADA Inaccessibilities

- Inaccessible signage.

Remedial Modifications

- Refer to 2010 ADA Standards for accessible design Section 703 for modifications.

Vertical Circulation

ADA Inaccessibilities

- Handrails to the stairs are not accessible.

Remedial Modifications

- Refer to 2010 ADA Standards for accessible design Section 504 and 505 and Figures 505.4, 505.5, 505.6 505.7.2 & 505.10.2 for further guidance on accessible stairs. Handrails have to be continuous on both sides and handrail extensions need to be provided.

Toilet Rooms & Bathing Facilities

ADA Inaccessibilities

- Toilet rooms are inaccessible.

Remedial Modifications

- Accessible restrooms needs to be revisited to redesign for accessibility. Refer to 2010 ADA Standards for accessible design Chapter 6 and Section 603 onward relating to the inaccessibilities.

Miscellaneous

ADA Inaccessibilities

-

Remedial Modifications

-

Notes:

This report has been generated from the S4 Surveys. Errors and Omissions are excepted.

Location: Moten Elementary School 1565 Morris Road SE Washington, DC 20020		Survey Date: 05/16/2017
Survey conducted by: Mark Nutter Naquran Smith	Report completed by: Anwar Mahmood Architect (ADA) anwar.mahmood@dc.gov 202-727-9296	

Parking

ADA Inaccessibilities

- Parking lot has 54 Parking spaces with no van accessible parking.
- No accessible signage provided.

Remedial Modifications

- Parking facility to be redesigned to incorporate van accessible parking spaces. Refer to 2010 ADA Standards for accessible design Section 208.2 & Fig. 502.2.
- On redesign of the Parking area, we need to make sure the access aisles connect to an accessible route. Refer to 2010 ADA Standards for accessible design Chapter 4, Section 402.
- Refer to 2010 ADA Standards for accessible design Section 703 for signage modifications.
- Parking lot slopes on the accessible route, access aisles and accessible parking bays has to be modified to be accessible.
- A drop-of area / Loading Zone may be incorporated and designed to be accessible. Refer to 2010 ADA Standards for accessible design Section 502, 503 & Fig. 503.3.

Exterior Accessible Route

ADA Inaccessibilities

- Accessible route is too steep in accessible slopes and cross slopes.

Remedial Modifications

- Accessible route has to be in the state of good repair. It should be smooth and slip resistant.
- We need to make sure the accessible route and access aisles are accessible in slopes and cross slopes. Refer to 2010 ADA Standards for accessible design Chapter 4, Section 402.

Curb Ramps & Ramps

ADA Inaccessibilities

-

Remedial Modifications

-

Entrances & Doors

ADA Inaccessibilities

- Out of 4 only one entrance is accessible.
- Directional signage to the accessible entrance is not provided.
- Interior door requires excessive force to operate.

Remedial Modifications

- *Entrances* shall be provided in accordance with 2010 ADA Standards for accessible design Chapter 2, Section 206.4. *Entrance* doors, doorways and gates shall comply with 404 and shall be on an *accessible* route complying with 402. Refer to 2010 ADA Standards for accessible design Section 703 and provided directional signage to the persons with disabilities towards accessible entrance.
- Refer to 2010 ADA Standards for accessible design Section 703 for directional signage.
- Most interior doors are inaccessible and too heavy to operate. It is proposed to inspect all interior door / accessible interior doors on the path of travel to make sure these comply with 2010 ADA Standards for accessible design Section 404.2.8, 404.2.8.2 & 404.2.9.

Lobbies & Corridors

ADA Inaccessibilities

-

Remedial Modifications

-

Rooms & Spaces

ADA Inaccessibilities

-

Remedial Modifications

-

Signage

ADA Inaccessibilities

-

Remedial Modifications

-

Vertical Circulation

ADA Inaccessibilities

-

Remedial Modifications

-

Toilet Rooms & Bathing Facilities

ADA Inaccessibilities

-

Remedial Modifications

-

Miscellaneous

ADA Inaccessibilities

-

Remedial Modifications

-

Notes:

This report has been generated from the S4 Surveys. Errors and Omissions are excepted.

Location: Nalle Elementary School 219 50 th . Street SE Washington DC	Survey Date: 03/22/2017
Survey conducted by: Mark Nutter Naquran Smith	Report completed by: Anwar Mahmood Architect (ADA) anwar.mahmood@dc.gov 202-727-9296

Parking

ADA Inaccessibilities

- Accessible parking not provided.

Remedial Modifications

- Parking facility to be redesigned to incorporate standard and van accessible parking spaces. Refer to 2010 ADA Standards for accessible design Section 208.2 & Fig. 502.2.
- On redesign of the Parking area, we need to make sure the access aisles connect to an accessible route. Refer to 2010 ADA Standards for accessible design Chapter 4, Section 402.
- Parking lot slopes on the accessible route, access aisles and accessible parking bays has to be modified to be accessible.
- A drop-of area / Loading Zone may be incorporated and designed to be accessible. Refer to 2010 ADA Standards for accessible design Section 502, 503 & Fig. 503.3.

Exterior Accessible Route

ADA Inaccessibilities

- No accessible route provided.

Remedial Modifications

- Accessible route needs to be provided with accessible markings and directional signage. It should be smooth and slip resistant.
- On redesign of the Parking area, we need to make sure the access aisles connect to an accessible route. Refer to 2010 ADA Standards for accessible design Chapter 4, Section 402.
- Wherever a route crosses a road or a differing traffic pattern, truncated domes need to be provided for the route to become accessible. Refer to 2010 ADA Standards for accessible design Chapter 7, Section 705.

Curb Ramps & Ramps

ADA Inaccessibilities

- Ramp landing not accessible.
- Detectable warnings not provided on a curb ramp.

Remedial Modifications

- Maximum allowable slope for an accessible ramp is 8.33% (1:12). Refer to 2010 ADA Standards for accessible design Section 405 & Fig. 405.7. Fig. 405.7 needs to be referred for modifications to the ramp landings.

- The above Section / subsection needs to be referred for modifications to railings and edge protection.
- Wherever a route crosses a road or a differing traffic pattern, truncated domes need to be provided for the route to become accessible. Refer to 2010 ADA Standards for accessible design Chapter 7, Section 705.
- Ramp needs to be modified as per Fig. 406.3

Entrances & Doors

ADA Inaccessibilities

- Out of 3 only one entrance is accessible.
- Thresholds are too high.
- Accessible entrance door handle not accessible.

Remedial Modifications

- *Entrances* shall be provided in accordance with 2010 ADA Standards for accessible design Chapter 2, Section 206.4. *Entrance* doors, doorways and gates shall comply with 404 and shall be on an *accessible* route complying with 402. Refer to 2010 ADA Standards for accessible design Section 703 and provided directional signage to the persons with disabilities towards accessible entrance.
- Thresholds need to be ramped to be accessible at slope not to exceed 8.33%.
- Most interior doors are inaccessible and too heavy to operate. It is proposed to inspect all interior door / accessible interior doors on the path of travel to make sure these comply with 2010 ADA Standards for accessible design Section 404.2.8, 404.2.8.2 & 404.2.9.
- Refer to Section 404.2.7 Handles, pulls, latches, locks, and other *operable parts* on doors and gates shall comply with 309.4. *Operable parts* of such hardware shall be 34 inches (865 mm) minimum and 48 inches (1220 mm) maximum above the finish floor or ground. Where sliding doors are in the fully open position, operating hardware shall be exposed and usable from both sides.

Lobbies & Corridors

ADA Inaccessibilities

- No accessible route in lobbies and corridors.

Remedial Modifications

- An elevator needs to be provided in the school for accessibility of the wheelchair user.

Rooms & Spaces

ADA Inaccessibilities

- N/A

Remedial Modifications

-

Signage

ADA Inaccessibilities

- N/A

Remedial Modifications

-

Vertical Circulation

ADA Inaccessibilities

- No Elevators provided.
- Staircases are inaccessible

Remedial Modifications

- An elevator needs to be provided in the school for accessibility of the wheelchair user.
- Refer to 2010 ADA Standards for accessible design Section 504 and 505 and Figures 505.4, 505.5, 505.6

505.7.2 & 505.10.2 for further guidance on accessible stairs. Handrails have to be continuous on both sides and handrail extensions need to be provided.

Toilet Rooms & Bathing Facilities

ADA Inaccessibilities

- No accessible toilets provided

Remedial Modifications

- Refer to 2010 ADA Standards for accessible design Section 703, 703.6.1, for further modifications.
- Accessible restrooms needs to be revisited for redesign for accessibility. Refer to 2010 ADA Standards for accessible design Chapter 6 and Section 603 onward relating to the inaccessibilities.
- Directional signage needs to be provided to the accessible toilet facilities.

Miscellaneous

ADA Inaccessibilities

- N/A

Remedial Modifications

-

Notes:

This report has been generated from the S4 Surveys. Errors and Omissions are excepted.

Location: Noyes Education Campus 2725 10 th . Street NE Washington DC 20018		Survey Date: 02/28/2017
Survey conducted by: Mark Nutter Naquran Smith	Report completed by: Anwar Mahmood Architect (ADA) anwar.mahmood@dc.gov 202-727-9296	

Parking <u>ADA Inaccessibilities</u> <ul style="list-style-type: none"> N/A <u>Remedial Modifications</u> <ul style="list-style-type: none">
Exterior Accessible Route <u>ADA Inaccessibilities</u> <ul style="list-style-type: none"> N/A <u>Remedial Modifications</u> <ul style="list-style-type: none">
Curb Ramps & Ramps <u>ADA Inaccessibilities</u> <ul style="list-style-type: none"> Ramp length is inaccessible. Inaccessible handrails on the ramp. <u>Remedial Modifications</u> <ul style="list-style-type: none"> Section 405.6. The rise for any <i>ramp</i> run shall be 30 inches (760 mm) maximum. Section 405.7. <i>Ramps</i> shall have landings at the top and the bottom of each <i>ramp</i> run. Landings shall comply with 405.7. A landing has to be provided at every 30' travel on the ramp. Maximum allowable slope for an accessible ramp is 8.33% (1:12). Refer to 2010 ADA Standards for accessible design Section 405 & Fig. 405.7. The above Section / subsection needs to be referred for modifications to railings and edge protection.
Entrances & Doors <u>ADA Inaccessibilities</u> <ul style="list-style-type: none"> Directional signage not provided to the accessible entrances. <u>Remedial Modifications</u> <ul style="list-style-type: none"> Directional signage needs to be provided to the accessible features of the facility. These should be conveniently installed on the accessible path of travel. <i>Entrances</i> shall be provided in accordance with 2010 ADA Standards for accessible design Chapter 2, Section 206.4. <i>Entrance</i> doors, doorways and gates shall comply with 404 and shall be on an <i>accessible</i> route complying with 402. Refer to 2010 ADA Standards for accessible design Section 703 and provided directional signage to the persons with disabilities towards accessible entrance.

•
Lobbies & Corridors
<u>ADA Inaccessibilities</u>
• N/A
<u>Remedial Modifications</u>
•
Rooms & Spaces
<u>ADA Inaccessibilities</u>
• N/A
<u>Remedial Modifications</u>
•
Signage
<u>ADA Inaccessibilities</u>
• N/A
<u>Remedial Modifications</u>
•
Vertical Circulation
<u>ADA Inaccessibilities</u>
• Handrails to the stairs are not accessible.
<u>Remedial Modifications</u>
• Refer to 2010 ADA Standards for accessible design Section 504 and 505 and Figures 505.4, 505.5, 505.6 505.7.2 & 505.10.2 for further guidance on accessible stairs. Handrails have to be continuous on both sides and handrail extensions need to be provided.
Toilet Rooms & Bathing Facilities
<u>ADA Inaccessibilities</u>
• Inaccessible coat hooks.
<u>Remedial Modifications</u>
• Refer to 2010 ADA Standards for accessible design Section 308 for reach ranges. Coat hooks need to be installed at a height not to exceed 48" AFF.
•
Miscellaneous
<u>ADA Inaccessibilities</u>
• N/A
<u>Remedial Modifications</u>
•
Notes:

This report has been generated from the S4 Surveys. Errors and Omissions are excepted.

Location: Orr Elementary School 2200 Minnesota Ave. SE Washington DC 20020		Survey Date: 03/00/2017
Survey conducted by: Mark Nutter Naquran Smith	Report completed by: Anwar Mahmood Architect (ADA) anwar.mahmood@dc.gov 202-727-9296	

Parking
<u>ADA Inaccessibilities</u> <u>Remedial Modifications</u> •
Exterior Accessible Route
<u>ADA Inaccessibilities</u> <u>Remedial Modifications</u> •
Curb Ramps & Ramps
<u>ADA Inaccessibilities</u> <u>Remedial Modifications</u> •
Entrances & Doors
<u>ADA Inaccessibilities</u> <u>Remedial Modifications</u> •
Lobbies & Corridors
<u>ADA Inaccessibilities</u> • <u>Remedial Modifications</u> •
Rooms & Spaces
<u>ADA Inaccessibilities</u> • <u>Remedial Modifications</u> •
Signage
<u>ADA Inaccessibilities</u> • <u>Remedial Modifications</u> •
Vertical Circulation

ADA Inaccessibilities
Remedial Modifications

-

Toilet Rooms & Bathing Facilities

ADA Inaccessibilities

Remedial Modifications

-

Miscellaneous

ADA Inaccessibilities

-

Remedial Modifications

-

Notes:

This report has been generated from the S4 Surveys. Errors and Omissions are excepted.

Blank survey Document S4 provided.

Location: Oyster-Adams Bilingual School 2801 Calvert Street NW Washington DC 20008		Survey Date: 01/26/2017
Survey conducted by: Mark Nutter Naquran Smith	Report completed by: Anwar Mahmood Architect (ADA) anwar.mahmood@dc.gov 202-727-9296	

Parking

ADA Inaccessibilities

- Van Accessible parking spaces not provided.

Remedial Modifications

- Parking facility to be redesigned to incorporate van accessible parking spaces. Refer to 2010 ADA Standards for accessible design Section 208.2 & Fig. 502.2.
- On redesign of the Parking area, we need to make sure the access aisles connect to an accessible route. Refer to 2010 ADA Standards for accessible design Chapter 4, Section 402.
- Parking lot slopes on the accessible route, access aisles and accessible parking bays has to be modified to be accessible.
- A drop-off area / Loading Zone may be incorporated and designed to be accessible. Refer to 2010 ADA Standards for accessible design Section 502, 503 & Fig. 503.3.

Exterior Accessible Route

ADA Inaccessibilities

- There is a 2" high curb at the garage entrance.
- Uneven cross slope at accessible route of travel.

Remedial Modifications

- This 2" curb has to be ramped at a slope not greater than 8.33% .
- Accessible route has to be in the state of good repair. It should be smooth and slip resistant.
- On redesign of the Parking area, we need to make sure the access aisles connect to an accessible route. Refer to 2010 ADA Standards for accessible design Chapter 4, Section 402.

Curb Ramps & Ramps

ADA Inaccessibilities

- Inaccessible landing at the ramp.

Remedial Modifications

- *Ramps* shall have landings at the top and the bottom of each *ramp* run. Landings shall comply with 405.7.
- Maximum allowable slope for an accessible ramp is 8.33% (1:12). Refer to 2010 ADA Standards for accessible design Section 405 & Fig. 405.7.
- The above Section / subsection needs to be referred for modifications to railings and edge protection.

Entrances & Doors

ADA Inaccessibilities

- A 1.5" high curb at the entrance is not ramped,

Remedial Modifications

- This 1.5" curb has to be ramped at a slope not greater than 8.33%.
- *Entrances* shall be provided in accordance with 2010 ADA Standards for accessible design Chapter 2, Section 206.4. *Entrance* doors, doorways and gates shall comply with 404 and shall be on an *accessible* route complying with 402. Refer to 2010 ADA Standards for accessible design Section 703 and provided directional signage to the persons with disabilities towards accessible entrance.
- Most interior doors are inaccessible and too heavy to operate. It is proposed to inspect all interior door / accessible interior doors on the path of travel to make sure these comply with 2010 ADA Standards for accessible design Section 404.2.8, 404.2.8.2 & 404.2.9.

Lobbies & Corridors

ADA Inaccessibilities

-

Remedial Modifications

-

Rooms & Spaces

ADA Inaccessibilities

-

Remedial Modifications

-

Signage

ADA Inaccessibilities

- The signage is inaccessible.

Remedial Modifications

-

Vertical Circulation

ADA Inaccessibilities

- Signage provided in the Elevator is inaccessible.
- Emergency Communications system in the elevator is inaccessible.

Remedial Modifications

- Please refer to 2010 ADA Standards for accessible design Section 707.1 General for further guidance.
- Two-way communication systems shall comply with 2010 ADA Standards for accessible design Section 708.

Toilet Rooms & Bathing Facilities

ADA Inaccessibilities

- Directional signage to the accessible restroom not provided.
- Accessible signage not provided.
- Inaccessible coat hooks provided.

Remedial Modifications

- Directional signage needs to be provided to accessible elements of the facility.
- Refer to 2010 ADA Standards for accessible design Section 703, 703.6.1, for further modifications.
- Refer to 2010 ADA Standards for accessible design Chapter 3 and Section 308 and 309 for reach ranges

and Operable parts. Coats hooks in accessible restrooms / spaces should be installed 48" AFF to the maximum.

Miscellaneous

ADA Inaccessibilities

-

Remedial Modifications

-

Notes:

This report has been generated from the S4 Surveys. Errors and Omissions are excepted.

Location: Oyster Adams Elementary School 2020 19 th . Street NW Washington DC		Survey Date: 04/04/2017
Survey conducted by: Mark Nutter Naquran Smith	Report completed by: Anwar Mahmood Architect (ADA) anwar.mahmood@dc.gov 202-727-9296	

Parking

ADA Inaccessibilities

- Van accessible parking not provided.
- Parking lot has inaccessible slopes.
- Inaccessible parking bays.
- Accessible signage not provided.

Remedial Modifications

- Parking facility to be redesigned to incorporate standard and van accessible parking spaces. Refer to 2010 ADA Standards for accessible design Section 208.2 & Fig. 502.2.
- On redesign of the Parking area, we need to make sure the access aisles connect to an accessible route. Refer to 2010 ADA Standards for accessible design Chapter 4, Section 402.
- Parking lot slopes on the accessible route, access aisles and accessible parking bays has to be modified to be accessible.
- A drop-of area / Loading Zone may be incorporated and designed to be accessible. Refer to 2010 ADA Standards for accessible design Section 502, 503 & Fig. 503.3.
- Refer to 2010 ADA Standards for accessible design Section 703 for accessible signage.

Exterior Accessible Route

ADA Inaccessibilities

- N/A

Remedial Modifications

-

Curb Ramps & Ramps

ADA Inaccessibilities

- Ramp is not provided with edge protection.

Remedial Modifications

- Maximum allowable slope for an accessible ramp is 8.33% (1:12). Refer to 2010 ADA Standards for accessible design Section 405 & Fig. 405.7.
- The above Section / subsection needs to be referred for modifications to railings and edge protection.

Entrances & Doors

ADA Inaccessibilities

- Round door knobs are inaccessible.

Remedial Modifications

- Handles, pulls, latches, locks, and other *operable parts* on doors and gates shall comply with 309.4. *Operable parts* of such hardware shall be 34 inches (865 mm) minimum and 48 inches (1220 mm) maximum above the finish floor or ground. Where sliding doors are in the fully open position, operating hardware shall be exposed and usable from both sides.
- Refer to 2010 ADA Standards for accessible design Section 404.2.7 Door hardware that can be operated with a closed fist or a loose grip accommodates the greatest range of users. Hardware that requires simultaneous hand and finger movements require greater dexterity and coordination, and is not recommended.

Lobbies & Corridors

ADA Inaccessibilities

- N/A

Remedial Modifications

-

Rooms & Spaces

ADA Inaccessibilities

- N/A

Remedial Modifications

-

Signage

ADA Inaccessibilities

- Inaccessible signage.
- Directional signage not provided.

Remedial Modifications

- Refer to 2010 ADA Standards for accessible design Section 703 for signage.
- Directional signage needs to be provided to accessible features of the facility.

Vertical Circulation

ADA Inaccessibilities

- Handrails to the stairs are not accessible.
- Elevator not provided for wheelchair accessibility

Remedial Modifications

- Refer to 2010 ADA Standards for accessible design Section 504 and 505 and Figures 505.4, 505.5, 505.6 505.7.2 & 505.10.2 for further guidance on accessible stairs. Handrails have to be continuous on both sides and handrail extensions need to be provided.

Toilet Rooms & Bathing Facilities

ADA Inaccessibilities

- Grab bars not provided in the accessible toilet stall.

Remedial Modifications

- Refer to 2010 ADA Standards for accessible design Section 609, 604.2 for further modifications.

Miscellaneous

ADA Inaccessibilities

-

Remedial Modifications

-

Notes:

This report has been generated from the S4 Surveys. Errors and Omissions are excepted.

Location: Patterson Elementary School 4399 S Capitol Ter. SW Washington, DC 20032		Survey Date: 05/18/2017
Survey conducted by: Mark Nutter Naquran Smith	Report completed by: Anwar Mahmood Architect (ADA) anwar.mahmood@dc.gov 202-727-9296	

Parking ADA Inaccessibilities <ul style="list-style-type: none"> • Detectable warnings on accessible route not provided. Remedial Modifications <ul style="list-style-type: none"> • Wherever a route crosses a road or a differing traffic pattern, truncated domes need to be provided for the route to become accessible. Refer to 2010 ADA Standards for accessible design Chapter 7, Section 705.
Exterior Accessible Route ADA Inaccessibilities <ul style="list-style-type: none"> • No detectable warnings provided on curb ramps. Remedial Modifications <ul style="list-style-type: none"> • Wherever a route crosses a road or a differing traffic pattern, truncated domes need to be provided for the route to become accessible. Refer to 2010 ADA Standards for accessible design Chapter 7, Section 705.
Curb Ramps & Ramps ADA Inaccessibilities <ul style="list-style-type: none"> • Remedial Modifications <ul style="list-style-type: none"> •
Entrances & Doors ADA Inaccessibilities <ul style="list-style-type: none"> • Interior door requires a force of 10lbs. to operate. Remedial Modifications <ul style="list-style-type: none"> • Most interior doors are inaccessible and too heavy to operate. It is proposed to inspect all interior door / accessible interior doors on the path of travel to make sure these comply with 2010 ADA Standards for accessible design Section 404.2.8, 404.2.8.2 & 404.2.9.
Lobbies & Corridors ADA Inaccessibilities <ul style="list-style-type: none"> • Remedial Modifications <ul style="list-style-type: none"> •
Rooms & Spaces ADA Inaccessibilities <ul style="list-style-type: none"> •

-

Remedial Modifications

-

Signage

ADA Inaccessibilities

-

Remedial Modifications

-

Vertical Circulation

ADA Inaccessibilities

-

Remedial Modifications

-

Toilet Rooms & Bathing Facilities

ADA Inaccessibilities

- Plumbing under the vanity / sink is exposed and not insulated.

Remedial Modifications

- Exposed Plumbing under vanity sinks has to be insulated to be accessible.

Miscellaneous

ADA Inaccessibilities

-

Remedial Modifications

-

Notes:

This report has been generated from the S4 Surveys. Errors and Omissions are excepted.

Location: Payne Elementary School 1445 C Street SE Washington DC 20003		Survey Date: 03/07/2017
Survey conducted by: Mark Nutter Naquran Smith	Report completed by: Anwar Mahmood Architect (ADA) anwar.mahmood@dc.gov 202-727-9296	

Parking <u>ADA Inaccessibilities</u> <ul style="list-style-type: none"> N/A <u>Remedial Modifications</u> <ul style="list-style-type: none">
Exterior Accessible Route <u>ADA Inaccessibilities</u> <ul style="list-style-type: none"> Curbs and threshold needs to be ramped. <u>Remedial Modifications</u> <ul style="list-style-type: none"> All curbs and threshold need to be ramped to a slope not to exceed 8.33%. Accessible route has to be in the state of good repair. It should be smooth and slip resistant. Wherever a route crosses a road or a differing traffic pattern, truncated domes need to be provided for the route to become accessible. Refer to 2010 ADA Standards for accessible design Chapter 7, Section 705.
Curb Ramps & Ramps <u>ADA Inaccessibilities</u> <ul style="list-style-type: none"> N/A <u>Remedial Modifications</u> <ul style="list-style-type: none">
Entrances & Doors <u>ADA Inaccessibilities</u> <ul style="list-style-type: none"> Directional signage to the accessible entrance is not provided. Doors too heavy to operate. <u>Remedial Modifications</u> <ul style="list-style-type: none"> Directional signage needs to be provided on an accessible route leading to the accessible entrance. Most interior doors are inaccessible and too heavy to operate. It is proposed to inspect all interior door / accessible interior doors on the path of travel to make sure these comply with 2010 ADA Standards for accessible design Section 404.2.8, 404.2.8.2 & 404.2.9.
Lobbies & Corridors <u>ADA Inaccessibilities</u> <ul style="list-style-type: none"> N/A <u>Remedial Modifications</u> <ul style="list-style-type: none">

Rooms & Spaces

ADA Inaccessibilities

- N/A
-

Remedial Modifications

-

Signage

ADA Inaccessibilities

- Inaccessible signage.

Remedial Modifications

- Refer to 2010 ADA Standards for accessible design Section 703 for guidance on accessible signage.

Vertical Circulation

ADA Inaccessibilities

- Handrails to the stairs are not accessible.

Remedial Modifications

- Refer to 2010 ADA Standards for accessible design Section 504 and 505 and Figures 505.4, 505.5, 505.6 505.7.2 & 505.10.2 for further guidance on accessible stairs. Handrails have to be continuous on both sides and handrail extensions need to be provided.

Toilet Rooms & Bathing Facilities

ADA Inaccessibilities

- Inaccessible signage.
- Inaccessible coat hooks.

Remedial Modifications

- Refer to 2010 ADA Standards for accessible design Section 703, 703.6.1, for further modifications.
- Refer to 2010 ADA Standards for accessible design section 308 for Reach Ranges. Coat hooks not be installed higher than 48" AFF.

Miscellaneous

ADA Inaccessibilities

- N/A

Remedial Modifications

-

Notes:

This report has been generated from the S4 Surveys. Errors and Omissions are excepted.

Location: Peabody Elementary School 425 C Street NE Washington DC 20002		Survey Date: 03/09/2017
Survey conducted by: Mark Nutter Naquran Smith	Report completed by: Anwar Mahmood Architect (ADA) anwar.mahmood@dc.gov 202-727-9296	

Parking <u>ADA Inaccessibilities</u> <ul style="list-style-type: none"> No accessible parking provided. <u>Remedial Modifications</u> <ul style="list-style-type: none"> N/A
Exterior Accessible Route <u>ADA Inaccessibilities</u> <ul style="list-style-type: none"> Accessible route has curbs as high as 1". Cross slope at locations is inaccessible. Detectable warnings not provided. <u>Remedial Modifications</u> <ul style="list-style-type: none"> All curbs on accessible route have to be ramped to slope not to exceed 8.33%. Accessible route has to be in the state of good repair. It should be smooth and slip resistant. Wherever a route crosses a road or a differing traffic pattern, truncated domes need to be provided for the route to become accessible. Refer to 2010 ADA Standards for accessible design Chapter 7, Section 705.
Curb Ramps & Ramps <u>ADA Inaccessibilities</u> <ul style="list-style-type: none"> N/A <u>Remedial Modifications</u> <ul style="list-style-type: none">
Entrances & Doors <u>ADA Inaccessibilities</u> <ul style="list-style-type: none"> Directional signage to the accessible entrance is not provided. <u>Remedial Modifications</u> <ul style="list-style-type: none"> <i>Entrances</i> shall be provided in accordance with 2010 ADA Standards for accessible design Chapter 2, Section 206.4. <i>Entrance</i> doors, doorways and gates shall comply with 404 and shall be on an <i>accessible</i> route complying with 402. Refer to 2010 ADA Standards for accessible design Section 703 and provided directional signage to the persons with disabilities towards accessible entrance.
Lobbies & Corridors <u>ADA Inaccessibilities</u>

- N/A

Remedial Modifications

-

Rooms & Spaces

ADA Inaccessibilities

- N/A

Remedial Modifications

-

Signage

ADA Inaccessibilities

- N/A

-

Remedial Modifications

-

Vertical Circulation

ADA Inaccessibilities

- Stairs are not provided with non-slip surface.
- Handrails are not continuous on both sides.
- Handrail extensions not provided.

Remedial Modifications

- Refer to 2010 ADA Standards for accessible design Section 504 and 505 and Figures 505.4, 505.5, 505.6 505.7.2 & 505.10.2 for further guidance on accessible stairs. Handrails have to be continuous on both sides and handrail extensions need to be provided.

Toilet Rooms & Bathing Facilities

ADA Inaccessibilities

Inaccessible shower stalls provided

Remedial Modifications

- Refer to 2010 ADA Standards for accessible design Section 608.2.1, 608.2.2, 608.2.3, 608.3.1, 608.3.2, & 608.3.3, for modifications.

Miscellaneous

ADA Inaccessibilities

- N/A

Remedial Modifications

-

Notes:

This report has been generated from the S4 Surveys. Errors and Omissions are excepted.

Location: Phelps Architectural & Engineering High School 704 26 th . Street NE Washington DC 20002		Survey Date: 03/02/2017
Survey conducted by: Mark Nutter Naquran Smith	Report completed by: Anwar Mahmood Architect (ADA) anwar.mahmood@dc.gov 202-727-9296	

Parking

ADA Inaccessibilities

- Signage for Van accessible parking not provided.

Remedial Modifications

- Van accessible signage needs to be incorporated on the van accessible parking bay. Refer to 2010 ADA Standards for accessible design Section 703.

Exterior Accessible Route

ADA Inaccessibilities

- N/A

Remedial Modifications

-

Curb Ramps & Ramps

ADA Inaccessibilities

- N/A

Remedial Modifications

-

Entrances & Doors

ADA Inaccessibilities

- One accessible entrance out of six entrances.
- Directional signage to accessible entrance is not provided.

Remedial Modifications

- *Entrances* shall be provided in accordance with 2010 ADA Standards for accessible design Chapter 2, Section 206.4. *Entrance* doors, doorways and gates shall comply with 404 and shall be on an *accessible* route complying with 402. Refer to 2010 ADA Standards for accessible design Section 703 and provided directional signage to the persons with disabilities towards accessible entrance.
- Refer to 2010 ADA Standards for accessible design Section 703. Directional signage to accessible facilities need to be provided.

Lobbies & Corridors

ADA Inaccessibilities

- N/A

Remedial Modifications

-

Rooms & Spaces

ADA Inaccessibilities

- N/A

Remedial Modifications

-

Signage

ADA Inaccessibilities

- N/A

Remedial Modifications

-

Vertical Circulation

ADA Inaccessibilities

- N/A

Remedial Modifications

-

Toilet Rooms & Bathing Facilities

ADA Inaccessibilities

- Directional signage to accessible restrooms is not provided.

Remedial Modifications

- Refer to 2010 ADA Standards for accessible design Section 703. Directional signage to accessible facilities need to be provided.

Miscellaneous

ADA Inaccessibilities

- N/A

Remedial Modifications

-

Notes:

This report has been generated from the S4 Surveys. Errors and Omissions are excepted.

Location: Plummer Elementary School 4601 Texas Ave. SE Washington, DC 20019		Survey Date: 03/23/2017
Survey conducted by: Mark Nutter Naquran Smith	Report completed by: Anwar Mahmood Architect (ADA) anwar.mahmood@dc.gov 202-727-9296	

Parking <u>ADA Inaccessibilities</u> <ul style="list-style-type: none"> N/A <u>Remedial Modifications</u> <ul style="list-style-type: none">
Exterior Accessible Route <u>ADA Inaccessibilities</u> <ul style="list-style-type: none"> N/A <u>Remedial Modifications</u> <ul style="list-style-type: none">
Curb Ramps & Ramps <u>ADA Inaccessibilities</u> <ul style="list-style-type: none"> N/A <u>Remedial Modifications</u> <ul style="list-style-type: none">
Entrances & Doors <u>ADA Inaccessibilities</u> <ul style="list-style-type: none"> Directional signage to the accessible entrance is not provided. Door handle not accessible. <u>Remedial Modifications</u> <ul style="list-style-type: none"> <i>Entrances</i> shall be provided in accordance with 2010 ADA Standards for accessible design Chapter 2, Section 206.4. <i>Entrance</i> doors, doorways and gates shall comply with 404 and shall be on an <i>accessible</i> route complying with 402. Refer to 2010 ADA Standards for accessible design Section 703 and provided directional signage to the persons with disabilities towards accessible entrance. Refer to 2010 ADA Standards for accessible design Section 309. Round door knobs are not accessible and may be replaced by latch or lever type door handles which would not require pinching or tight grasping and twisting of the wrist.
Lobbies & Corridors <u>ADA Inaccessibilities</u> <ul style="list-style-type: none"> Elevator not in service. <u>Remedial Modifications</u> <ul style="list-style-type: none"> Elevator has to be repaired to be in service for accessibility.

Rooms & Spaces

ADA Inaccessibilities

- N/A

Remedial Modifications

-

Signage

ADA Inaccessibilities

- N/A

Remedial Modifications

-

Vertical Circulation

ADA Inaccessibilities

- Elevator in need of repair or replacement.
- Handrails to the stairs are not accessible.

Remedial Modifications

- Elevator has to be repaired to be in service for accessibility.
- Refer to 2010 ADA Standards for accessible design Section 504 and 505 and Figures 505.4, 505.5, 505.6 505.7.2 & 505.10.2 for further guidance on accessible stairs. Handrails have to be continuous on both sides and handrail extensions need to be provided.

Toilet Rooms & Bathing Facilities

ADA Inaccessibilities

- N/A

Remedial Modifications

-

Miscellaneous

ADA Inaccessibilities

- N/A

Remedial Modifications

-

Notes:

This report has been generated from the S4 Surveys. Errors and Omissions are excepted.

Location: Powell Elementary School 1350 Upshur Street NW Washington DC 20011		Survey Date: 01/31/2017
Survey conducted by: Mark Nutter Naquran Smith	Report completed by: Anwar Mahmood Architect (ADA) anwar.mahmood@dc.gov 202-727-9296	

Parking <u>ADA Inaccessibilities</u> <ul style="list-style-type: none"> N/A <u>Remedial Modifications</u> <ul style="list-style-type: none">
Exterior Accessible Route <u>ADA Inaccessibilities</u> <ul style="list-style-type: none"> N/A <u>Remedial Modifications</u> <ul style="list-style-type: none">
Curb Ramps & Ramps <u>ADA Inaccessibilities</u> <ul style="list-style-type: none"> N/A <u>Remedial Modifications</u> <ul style="list-style-type: none">
Entrances & Doors <u>ADA Inaccessibilities</u> <ul style="list-style-type: none"> N/A <u>Remedial Modifications</u> <ul style="list-style-type: none">
Lobbies & Corridors <u>ADA Inaccessibilities</u> <ul style="list-style-type: none"> N/A <u>Remedial Modifications</u> <ul style="list-style-type: none">
Rooms & Spaces <u>ADA Inaccessibilities</u> <ul style="list-style-type: none"> N/A <u>Remedial Modifications</u> <ul style="list-style-type: none">
Signage <u>ADA Inaccessibilities</u>

- N/A

Remedial Modifications

-

Vertical Circulation

ADA Inaccessibilities

- N/A

Remedial Modifications

-

Toilet Rooms & Bathing Facilities

ADA Inaccessibilities

- N/A

Remedial Modifications

-

Miscellaneous

ADA Inaccessibilities

- N/A

Remedial Modifications

-

Notes:

This report has been generated from the S4 Surveys. Errors and Omissions are excepted.

Location: Randle Highlands Elementary School 1200 S Street NW Washington DC		Survey Date: 03/24/2017
Survey conducted by: Mark Nutter Naquran Smith	Report completed by: Anwar Mahmood Architect (ADA) anwar.mahmood@dc.gov 202-727-9296	

Parking

ADA Inaccessibilities

- N/A

Remedial Modifications

-

Exterior Accessible Route

ADA Inaccessibilities

- Slope at some locations is too steep.
- 3" curb on accessible route.
- Detectable warnings not provided.

Remedial Modifications

- Accessible route has to be in the state of good repair. It should be smooth and slip resistant.
- All curbs on the accessible path of travel have to be ramped at a slope not to exceed 8.33%.
- Wherever a route crosses a road or a differing traffic pattern, truncated domes need to be provided for the route to become accessible. Refer to 2010 ADA Standards for accessible design Chapter 7, Section 705.

Curb Ramps & Ramps

ADA Inaccessibilities

- N/A

Remedial Modifications

-

Entrances & Doors

ADA Inaccessibilities

- N/A

Remedial Modifications

-

Lobbies & Corridors

ADA Inaccessibilities

- N/A

Remedial Modifications

-

Rooms & Spaces

ADA Inaccessibilities

- N/A

Remedial Modifications

-

Signage

ADA Inaccessibilities

- N/A

Remedial Modifications

-

Vertical Circulation

ADA Inaccessibilities

- Elevator Cab does not provide Braille signage.

Remedial Modifications

- Refer to 2010 ADA Standards for accessible design Section 703 for Braille to be incorporated on the signage in the Elevator Cab.

Toilet Rooms & Bathing Facilities

ADA Inaccessibilities

- Clear floor space in front of the accessible urinal is not provided.

Remedial Modifications

- There has to be a clear floor space of 30"x48" in front of the accessible urinal stall.
- Accessible restrooms needs to be revisited to redesign for accessibility. Refer to 2010 ADA Standards for accessible design Chapter 6 and Section 603 onward relating to the inaccessibilities.

Miscellaneous

ADA Inaccessibilities

- N/A

Remedial Modifications

-

Notes:

This report has been generated from the S4 Surveys. Errors and Omissions are excepted.

Location: Raymond Education Center 915 Spring Road NW Washington, DC 20010		Survey Date: 02/01/2017
Survey conducted by: Mark Nutter Naquran Smith	Report completed by: Anwar Mahmood Architect (ADA) anwar.mahmood@dc.gov 202-727-9296	

Parking	
<u>ADA Inaccessibilities</u> <ul style="list-style-type: none"> N/A 	
<u>Remedial Modifications</u> <ul style="list-style-type: none"> 	
Exterior Accessible Route	
<u>ADA Inaccessibilities</u> <ul style="list-style-type: none"> No detectable warnings provided on curb ramps. 	
<u>Remedial Modifications</u> <ul style="list-style-type: none"> Accessible route has to be in the state of good repair. It should be smooth and slip resistant. Wherever a route crosses a road or a differing traffic pattern, truncated domes need to be provided for the route to become accessible. Refer to 2010 ADA Standards for accessible design Chapter 7, Section 705. 	
Curb Ramps & Ramps	
<u>ADA Inaccessibilities</u> <ul style="list-style-type: none"> Ramp is not smooth at transition. There is a curb 1.5" high. 	
<u>Remedial Modifications</u> <ul style="list-style-type: none"> The curb has to be ramped and smoothed to be accessible. Maximum allowable slope for an accessible ramp is 8.33% (1:12). Refer to 2010 ADA Standards for accessible design Section 405 & Fig. 405.7. 	
Entrances & Doors	
<u>ADA Inaccessibilities</u> <ul style="list-style-type: none"> Round door Knobs are not accessible. Interior door requires a force of 13lbs. to operate. 	
<u>Remedial Modifications</u> <ul style="list-style-type: none"> Refer to 2010 ADA Standards for accessible design Section 309. Round door knobs are not accessible and may be replaced by latch or lever type door handles which would not require pinching or tight grasping and twisting of the wrist. Entrances shall be provided in accordance with 2010 ADA Standards for accessible design Chapter 2, Section 206.4. Entrance doors, doorways and gates shall comply with 404 and shall be on an <i>accessible</i> route complying with 402. Refer to 2010 ADA Standards for accessible design Section 703 and provided directional signage to the persons with disabilities towards accessible entrance. Most interior doors are inaccessible and too heavy to operate. It is proposed to inspect all interior door / 	

accessible interior doors on the path of travel to make sure these comply with 2010 ADA Standards for accessible design Section 404.2.8, 404.2.8.2 & 404.2.9.

Lobbies & Corridors

ADA Inaccessibilities

- EAS / FAS is not accessible.

Remedial Modifications

- Both audio visual capability has be provided on the Emergency / Fire Alarm System. Refer to 2010 ADA Standards for accessible design Section 702.

Rooms & Spaces

ADA Inaccessibilities

- Controls are installed too high.

Remedial Modifications

- Refer to 2010 ADA Standards for accessible design Section 308 and 309 for modifications. A maximum recommended height for accessible controls is 48" AFF.

Signage

ADA Inaccessibilities

- Inaccessible signage.

Remedial Modifications

- Refer to 2010 ADA Standards for accessible design Section 703. Signage is not to be installed on door panels but on the wall on latch side of the doors.

Vertical Circulation

ADA Inaccessibilities

- Handrails to the stairs are not accessible.
- Broken lift.

Remedial Modifications

- Refer to 2010 ADA Standards for accessible design Section 504 and 505 and Figures 505.4, 505.5, 505.6 505.7.2 & 505.10.2 for further guidance on accessible stairs. Handrails have to be continuous on both sides and handrail extensions need to be provided.
- All accessible features in a facility have to be in order and in the state of good repair at all times of operation.

Toilet Rooms & Bathing Facilities

ADA Inaccessibilities

- Accessible signage is not provided to the restroom doors.
- Toilet paper dispenser is installed too high.
- An array of Urinals are inaccessible..
- Plumbing under the vanity / sink is exposed and not insulated.

Remedial Modifications

- Refer to 2010 ADA Standards for accessible design Section 703, 703.6.1, for further modifications.
- Accessible restrooms needs to be revisited to redesign for accessibility. Refer to 2010 ADA Standards for accessible design Chapter 6 and Section 603 onward relating to the inaccessibilities.

Miscellaneous

ADA Inaccessibilities

-

Remedial Modifications

•

Notes:

This report has been generated from the S4 Surveys. Errors and Omissions are excepted.

Location: Roosevelt High School 4301 13 th . Street NW Washington, DC 20011		Survey Date: 00/00/2017
Survey conducted by: Mark Nutter Naquran Smith	Report completed by: Anwar Mahmood Architect (ADA) anwar.mahmood@dc.gov 202-727-9296	

Parking <u>ADA Inaccessibilities</u> <ul style="list-style-type: none"> Parking lot has 72 Parking spaces with no Van accessible parking. <u>Remedial Modifications</u> <ul style="list-style-type: none"> Parking facility to be redesigned to incorporate standard and van accessible parking spaces. Refer to 2010 ADA Standards for accessible design Section 208.2 & Fig. 502.2.
Exterior Accessible Route <u>ADA Inaccessibilities</u> <ul style="list-style-type: none"> N/A <u>Remedial Modifications</u> <ul style="list-style-type: none">
Curb Ramps & Ramps <u>ADA Inaccessibilities</u> <ul style="list-style-type: none"> Inaccessible ramp. <u>Remedial Modifications</u> <ul style="list-style-type: none"> Maximum allowable slope for an accessible ramp is 8.33% (1:12). Refer to 2010 ADA Standards for accessible design Section 405 & Fig. 405.7. The above Section / subsection needs to be referred for modifications to railings and edge protection.
Entrances & Doors <u>ADA Inaccessibilities</u> <ul style="list-style-type: none"> Interior door requires a force of 11lbs. to operate. <u>Remedial Modifications</u> <ul style="list-style-type: none"> Most interior doors are inaccessible and too heavy to operate. It is proposed to inspect all interior door / accessible interior doors on the path of travel to make sure these comply with 2010 ADA Standards for accessible design Section 404.2.8, 404.2.8.2 & 404.2.9.
Lobbies & Corridors <u>ADA Inaccessibilities</u> <ul style="list-style-type: none"> N/A <u>Remedial Modifications</u> <ul style="list-style-type: none">
Rooms & Spaces <u>ADA Inaccessibilities</u> <ul style="list-style-type: none"> N/A

Remedial Modifications

-

Signage

ADA Inaccessibilities

- N/A

Remedial Modifications

-

Vertical Circulation

ADA Inaccessibilities

- N/A

Remedial Modifications

-

Toilet Rooms & Bathing Facilities

ADA Inaccessibilities

- N/A

Remedial Modifications

-

Miscellaneous

ADA Inaccessibilities

-

Remedial Modifications

-

Notes:

This report has been generated from the S4 Surveys. Errors and Omissions are excepted.

Location: Seaton Elementary School 1503 10 th . Street NW Washington DC 20001	Survey Date: 03/15/2017
Survey conducted by: Mark Nutter Naquran Smith	Report completed by: Anwar Mahmood Architect (ADA) anwar.mahmood@dc.gov 202-727-9296

Parking

ADA Inaccessibilities

- No accessible parking provided.

Remedial Modifications

- Parking facility to be redesigned to incorporate standard and van accessible parking spaces. At least three accessible parking spaces need to be provided with one of these to be Van accessible space. Refer to 2010 ADA Standards for accessible design Section 208.2 & Fig. 502.2.
- A drop-off area / Loading Zone has be incorporated and designed to be accessible. Refer to 2010 ADA Standards for accessible design Section 502, 503 & Fig. 503.3.

Exterior Accessible Route

ADA Inaccessibilities

- A 4" High curb on accessible route.
- Detectable warnings not provided.

Remedial Modifications

- On redesign of the Parking area, we need to make sure the access aisles connect to an accessible route. Refer to 2010 ADA Standards for accessible design Chapter 4, Section 402.
- A 4" high curb to be modified to be ramped.
- Wherever a route crosses a road or a differing traffic pattern, truncated domes need to be provided for the route to become accessible. Refer to 2010 ADA Standards for accessible design Chapter 7, Section 705.

Curb Ramps & Ramps

ADA Inaccessibilities

-

Remedial Modifications

-

Entrances & Doors

ADA Inaccessibilities

- Only one out of 6 entrances is accessible.
- 3" Curb at the threshold.

Remedial Modifications

- *Entrances* shall be provided in accordance with 2010 ADA Standards for accessible design Chapter 2,

Section 206.4. *Entrance* doors, doorways and gates shall comply with 404 and shall be on an *accessible* route complying with 402.

- The curb at the threshold needs to be ramped at a maximum slope of 8.33% to be accessible.

Lobbies & Corridors

ADA Inaccessibilities

- No accessible route in L&C.

Remedial Modifications

- Lobbies and corridors needs to be modified for curbs, protruding objects.

Rooms & Spaces

ADA Inaccessibilities

-

Remedial Modifications

-

Signage

ADA Inaccessibilities

-

Remedial Modifications

-

Vertical Circulation

ADA Inaccessibilities

- Wheelchair accessibility not provided.

Remedial Modifications

- There are no elevators lifts or ramps provided. We need to study the facility spaces for possible redesign to incorporate Elevators / Lifts / or ramps for vertical accessibility for a wheelchair user.

Toilet Rooms & Bathing Facilities

ADA Inaccessibilities

- Generally the toilet rooms and fixtures are inaccessible.

Remedial Modifications

- All toilets / restroom facilities need to be reworked / redesigned to be accessible.

Etc.

Miscellaneous

ADA Inaccessibilities

-

Remedial Modifications

-

Notes:

This report has been generated from the S4 Surveys. Errors and Omissions are excepted.

Location: Sharpe Health School 4300 13 th . Street NW Washington DC 20011	Survey Date: 04/04/2017
Survey conducted by: Mark Nutter Naquran Smith	Report completed by: Anwar Mahmood Architect (ADA) anwar.mahmood@dc.gov 202-727-9296

Parking

ADA Inaccessibilities

- Van accessible space not provided.
- Access aisle not provided.
- Accessible signage not provided.

Remedial Modifications

- Parking facility to be redesigned to incorporate standard and van accessible parking spaces. Refer to 2010 ADA Standards for accessible design Section 208.2 & Fig. 502.2.
- On redesign of the Parking area, we need to make sure the access aisles connect to an accessible route. Refer to 2010 ADA Standards for accessible design Chapter 4, Section 402.
- Refer to 2010 ADA Standards for accessible design Section 703, 703.6.1 for accessible signage.
- A drop-of area / Loading Zone may be incorporated and designed to be accessible. Refer to 2010 ADA Standards for accessible design Section 502, 503 & Fig. 503.3.

Exterior Accessible Route

ADA Inaccessibilities

- No detectable warnings provided on curb ramps.

Remedial Modifications

- Wherever a route crosses a road or a differing traffic pattern, truncated domes need to be provided for the route to become accessible. Refer to 2010 ADA Standards for accessible design Chapter 7, Section 705.

Curb Ramps & Ramps

ADA Inaccessibilities

- Handrails to the 30' long ramp not provided.

Remedial Modifications

- Maximum allowable slope for an accessible ramp is 8.33% (1:12). Refer to 2010 ADA Standards for accessible design Section 405 & Fig. 405.7.
- The above Section / subsection needs to be referred for modifications to railings and edge protection.

Entrances & Doors

ADA Inaccessibilities

- Round door knobs provided.

Remedial Modifications

- Refer to 2010 ADA Standards for accessible design Section 309. Round door knobs are not accessible and may be replaced by latch or lever type door handles which would not require pinching or tight grasping and twisting of the wrist.

Lobbies & Corridors

ADA Inaccessibilities

- N/A

Remedial Modifications

-

Rooms & Spaces

ADA Inaccessibilities

- N/A

Remedial Modifications

-

Signage

ADA Inaccessibilities

- N/A

Remedial Modifications

-

Vertical Circulation

ADA Inaccessibilities

- N/A

Remedial Modifications

-

Toilet Rooms & Bathing Facilities

ADA Inaccessibilities

- Toilet rooms are inaccessible.

Remedial Modifications

- Refer to 2010 ADA Standards for accessible design Section 703, 703.6.1, for further modifications.
- Accessible restrooms needs to be revisited to redesign for accessibility. Refer to 2010 ADA Standards for accessible design Chapter 6 and Section 603 onward relating to the inaccessibilities.

Miscellaneous

ADA Inaccessibilities

- N/A

Remedial Modifications

-

Notes:

This report has been generated from the S4 Surveys. Errors and Omissions are excepted.

Location: Shepard Elementary School 7800 14 th . Street NW Washington, DC 20011		Survey Date: 02/03/2017
Survey conducted by: Mark Nutter Naquran Smith		Report completed by: Anwar Mahmood Architect (ADA) anwar.mahmood@dc.gov 202-727-9296

Parking

ADA Inaccessibilities

- Parking lot has 12 Parking spaces with no accessible parking.
- Slopes at parking lot are inaccessible.
- No access aisles provided.
- No accessible route provided.

Remedial Modifications

- Parking facility to be redesigned to incorporate standard and van accessible parking spaces. Refer to 2010 ADA Standards for accessible design Section 208.2 & Fig. 502.2.
- On redesign of the Parking area, we need to make sure the access aisles connect to an accessible route. Refer to 2010 ADA Standards for accessible design Chapter 4, Section 402.
- Parking lot slopes on the accessible route, access aisles and accessible parking bays has to be modified to be accessible.
- A drop-of area / Loading Zone may be incorporated and designed to be accessible. Refer to 2010 ADA Standards for accessible design Section 502, 503 & Fig. 503.3.

Exterior Accessible Route

ADA Inaccessibilities

- No detectable warnings provided on curb ramps.

Remedial Modifications

- Accessible route has to be in the state of good repair. It should be smooth and slip resistant.
- On redesign of the Parking area, we need to make sure the access aisles connect to an accessible route. Refer to 2010 ADA Standards for accessible design Chapter 4, Section 402.
- Wherever a route crosses a road or a differing traffic pattern, truncated domes need to be provided for the route to become accessible. Refer to 2010 ADA Standards for accessible design Chapter 7, Section 705.

Curb Ramps & Ramps

ADA Inaccessibilities

- No detectable warnings provided on curb ramps.

Remedial Modifications

- Wherever a route crosses a road or a differing traffic pattern, truncated domes need to be provided for the route to become accessible. Refer to 2010 ADA Standards for accessible design Chapter 7, Section 705.

- The above Section / subsection needs to be referred for modifications to railings and edge protection.

Entrances & Doors

ADA Inaccessibilities

- Directional signage to the accessible entrance is not provided.

Remedial Modifications

- *Entrances* shall be provided in accordance with 2010 ADA Standards for accessible design Chapter 2, Section 206.4. *Entrance* doors, doorways and gates shall comply with 404 and shall be on an *accessible* route complying with 402. Refer to 2010 ADA Standards for accessible design Section 703 and provided directional signage to the persons with disabilities towards accessible entrance.
- Most interior doors are inaccessible and too heavy to operate. It is proposed to inspect all interior door / accessible interior doors on the path of travel to make sure these comply with 2010 ADA Standards for accessible design Section 404.2.8, 404.2.8.2 & 404.2.9.

Lobbies & Corridors

ADA Inaccessibilities

-

Remedial Modifications

-

Rooms & Spaces

ADA Inaccessibilities

-

Remedial Modifications

-

Signage

ADA Inaccessibilities

-

Remedial Modifications

-

Vertical Circulation

ADA Inaccessibilities

- Handrails to the stairs are not accessible.

Remedial Modifications

- Refer to 2010 ADA Standards for accessible design Section 504 and 505 and Figures 505.4, 505.5, 505.6 505.7.2 & 505.10.2 for further guidance on accessible stairs. Handrails have to be continuous on both sides and handrail extensions need to be provided.

Toilet Rooms & Bathing Facilities

ADA Inaccessibilities

Remedial Modifications

-

Miscellaneous

ADA Inaccessibilities

-

Remedial Modifications

•

Notes:

This report has been generated from the S4 Surveys. Errors and Omissions are excepted.

Location: Simon Elementary School 401 Mississippi Ave. SE Washington, DC 20032		Survey Date: 05/26/2017
Survey conducted by: Mark Nutter Naquran Smith	Report completed by: Anwar Mahmood Architect (ADA) anwar.mahmood@dc.gov 202-727-9296	

Parking

ADA Inaccessibilities

- No access aisles provided.
- No accessible route provided.

Remedial Modifications

- Parking lot slopes on the accessible route, access aisles and accessible parking bays has to be modified to be accessible.
- A drop-of area / Loading Zone may be incorporated and designed to be accessible. Refer to 2010 ADA Standards for accessible design Section 502, 503 & Fig. 503.3.

Exterior Accessible Route

ADA Inaccessibilities

- Accessible route is in state of gross disrepair.
- Concrete sidewalk is damaged.
- No detectable warnings provided on curb ramps.

Remedial Modifications

- Accessible route has to be in the state of good repair. It should be smooth and slip resistant.
- On redesign of the Parking area, we need to make sure the access aisles connect to an accessible route. Refer to 2010 ADA Standards for accessible design Chapter 4, Section 402.
- Wherever a route crosses a road or a differing traffic pattern, truncated domes need to be provided for the route to become accessible. Refer to 2010 ADA Standards for accessible design Chapter 7, Section 705.

Curb Ramps & Ramps

ADA Inaccessibilities

-

Remedial Modifications

-

Entrances & Doors

ADA Inaccessibilities

- Out of 4 only 1 entrance is accessible.
- Directional signage to the accessible entrance is not provided.
- Interior door requires a force of 14lbs. to operate.

Remedial Modifications

- *Entrances* shall be provided in accordance with 2010 ADA Standards for accessible design Chapter 2, Section 206.4. *Entrance* doors, doorways and gates shall comply with 404 and shall be on an *accessible* route complying with 402. Refer to 2010 ADA Standards for accessible design Section 703 and provided directional signage to the persons with disabilities towards accessible entrance.
- Most interior doors are inaccessible and too heavy to operate. It is proposed to inspect all interior door / accessible interior doors on the path of travel to make sure these comply with 2010 ADA Standards for accessible design Section 404.2.8, 404.2.8.2 & 404.2.9.

Lobbies & Corridors

ADA Inaccessibilities

-

Remedial Modifications

-

Rooms & Spaces

ADA Inaccessibilities

- Controls on inaccessible height.

Remedial Modifications

- Refer to 2010 ADA Standards for accessible design Section 308 and 309.

Signage

ADA Inaccessibilities

-

Remedial Modifications

-

Vertical Circulation

ADA Inaccessibilities

- Handrails to the stairs are not accessible.

Remedial Modifications

- Refer to 2010 ADA Standards for accessible design Section 504 and 505 and Figures 505.4, 505.5, 505.6 505.7.2 & 505.10.2 for further guidance on accessible stairs. Handrails have to be continuous on both sides and handrail extensions need to be provided.

Toilet Rooms & Bathing Facilities

ADA Inaccessibilities

- Restrooms are inaccessible.

Remedial Modifications

- Accessible restrooms needs to be revisited to redesign for accessibility. Refer to 2010 ADA Standards for accessible design Chapter 6 and Section 603 onward relating to the inaccessibilities.

Miscellaneous

ADA Inaccessibilities

-

Remedial Modifications

-

Notes:

This report has been generated from the S4 Surveys. Errors and Omissions are excepted.

Location: Smothers Elementary School 4400 Brooks Street NE Washington, DC 20019		Survey Date: 03/02/2017
Survey conducted by: Mark Nutter Naquran Smith	Report completed by: Anwar Mahmood Architect (ADA) anwar.mahmood@dc.gov 202-727-9296	

Parking <u>ADA Inaccessibilities</u> <ul style="list-style-type: none"> N/A <u>Remedial Modifications</u> <ul style="list-style-type: none">
Exterior Accessible Route <u>ADA Inaccessibilities</u> <ul style="list-style-type: none"> N/A <u>Remedial Modifications</u> <ul style="list-style-type: none">
Curb Ramps & Ramps <u>ADA Inaccessibilities</u> <ul style="list-style-type: none"> Handrails not provided. <u>Remedial Modifications</u> <ul style="list-style-type: none"> Maximum allowable slope for an accessible ramp is 8.33% (1:12). Refer to 2010 ADA Standards for accessible design Section 405 & Fig. 405.7. The above Section / subsection needs to be referred for modifications to railings and edge protection.
Entrances & Doors <u>ADA Inaccessibilities</u> <ul style="list-style-type: none"> N/A <u>Remedial Modifications</u> <ul style="list-style-type: none">
Lobbies & Corridors <u>ADA Inaccessibilities</u> <ul style="list-style-type: none"> Light strobes to emergency alarm system not provided. <u>Remedial Modifications</u> <ul style="list-style-type: none"> Emergency alarm system need to be upgraded to incorporate light strobes.
Rooms & Spaces <u>ADA Inaccessibilities</u> <ul style="list-style-type: none"> Electrical Controls too high. <u>Remedial Modifications</u> <ul style="list-style-type: none"> Refer to 2010 ADA Standards for accessible design Section 308 & 309 for reach ranges.
Signage

ADA Inaccessibilities

- Braille is missing on the Signage.

Remedial Modifications

- Refer to 2010 ADA Standards for accessible design Section 703 for accessible signage.

Vertical Circulation

ADA Inaccessibilities

- Handrails not provided with accessible Handrails.

Remedial Modifications

- Refer to 2010 ADA Standards for accessible design Section 504 and 505 and Figures 505.4, 505.5, 505.6 505.7.2 & 505.10.2 for further guidance on accessible stairs. Handrails have to be continuous on both sides and handrail extensions need to be provided.

Toilet Rooms & Bathing Facilities

ADA Inaccessibilities

- Directional signage to accessible toilet rooms not provided.
- Toilet rooms signage is inaccessible.

Remedial Modifications

- Directional signage to accessible features of the facility needs to be provided.
- Refer to 2010 ADA Standards for accessible design Section 703, 703.6.1, for further modifications.

Miscellaneous

ADA Inaccessibilities

- N/A

Remedial Modifications

-

Notes:

This report has been generated from the S4 Surveys. Errors and Omissions are excepted.

Location: Sousa Middle School 3650 Ely Place SE Washington, DC 20019		Survey Date: 03/30/2017
Survey conducted by: Mark Nutter Naquran Smith	Report completed by: Anwar Mahmood Architect (ADA) anwar.mahmood@dc.gov 202-727-9296	

Parking <u>ADA Inaccessibilities</u> <ul style="list-style-type: none"> <u>Remedial Modifications</u> <ul style="list-style-type: none">
Exterior Accessible Route <u>ADA Inaccessibilities</u> <ul style="list-style-type: none"> <u>Remedial Modifications</u> <ul style="list-style-type: none">
Curb Ramps & Ramps <u>ADA Inaccessibilities</u> <ul style="list-style-type: none"> <u>Remedial Modifications</u> <ul style="list-style-type: none">
Entrances & Doors <u>ADA Inaccessibilities</u> <ul style="list-style-type: none"> Directional signage to the accessible entrance is not provided. <u>Remedial Modifications</u> <ul style="list-style-type: none"> <i>Entrances</i> shall be provided in accordance with 2010 ADA Standards for accessible design Chapter 2, Section 206.4. <i>Entrance</i> doors, doorways and gates shall comply with 404 and shall be on an <i>accessible</i> route complying with 402. Refer to 2010 ADA Standards for accessible design Section 703 and provided directional signage to the persons with disabilities towards accessible entrance.
Lobbies & Corridors <u>ADA Inaccessibilities</u> <ul style="list-style-type: none"> <u>Remedial Modifications</u> <ul style="list-style-type: none">
Rooms & Spaces <u>ADA Inaccessibilities</u> <ul style="list-style-type: none"> <u>Remedial Modifications</u> <ul style="list-style-type: none">

Signage

ADA Inaccessibilities

-

Remedial Modifications

-

Vertical Circulation

ADA Inaccessibilities

-

Remedial Modifications

-

Toilet Rooms & Bathing Facilities

ADA Inaccessibilities

-

Remedial Modifications

-

Miscellaneous

ADA Inaccessibilities

-

Remedial Modifications

-

Notes:

This report has been generated from the S4 Surveys. Errors and Omissions are excepted.

Location: Stanton Elementary School 2701 Naylor Road SE Washington, DC 20020		Survey Date: 06/17/2017
Survey conducted by: Mark Nutter Naquran Smith	Report completed by: Anwar Mahmood Architect (ADA) anwar.mahmood@dc.gov 202-727-9296	

Parking

ADA Inaccessibilities

- Parking lot has 60 Parking spaces with no standard accessible parking.

Remedial Modifications

- Parking facility to be redesigned to incorporate standard and van accessible parking spaces. Refer to 2010 ADA Standards for accessible design Section 208.2 & Fig. 502.2.
- On redesign of the Parking area, we need to make sure the access aisles connect to an accessible route. Refer to 2010 ADA Standards for accessible design Chapter 4, Section 402.
- Parking lot slopes on the accessible route, access aisles and accessible parking bays has to be modified to be accessible.
- A drop-off area / Loading Zone may be incorporated and designed to be accessible. Refer to 2010 ADA Standards for accessible design Section 502, 503 & Fig. 503.3.

Exterior Accessible Route

ADA Inaccessibilities

- No detectable warnings provided on curb ramps.

Remedial Modifications

- Wherever a route crosses a road or a differing traffic pattern, truncated domes need to be provided for the route to become accessible. Refer to 2010 ADA Standards for accessible design Chapter 7, Section 705.

Curb Ramps & Ramps

ADA Inaccessibilities

-

Remedial Modifications

-

Entrances & Doors

ADA Inaccessibilities

- Interior door requires a force of 15lbs. to operate.

Remedial Modifications

- *Entrances* shall be provided in accordance with 2010 ADA Standards for accessible design Chapter 2, Section 206.4. *Entrance* doors, doorways and gates shall comply with 404 and shall be on an *accessible* route complying with 402. Refer to 2010 ADA Standards for accessible design Section 703 and provided directional signage to the persons with disabilities towards accessible entrance.

- Most interior doors are inaccessible and too heavy to operate. It is proposed to inspect all interior door / accessible interior doors on the path of travel to make sure these comply with 2010 ADA Standards for accessible design Section 404.2.8, 404.2.8.2 & 404.2.9.

Lobbies & Corridors

ADA Inaccessibilities

-

Remedial Modifications

-

Rooms & Spaces

ADA Inaccessibilities

-

Remedial Modifications

-

Signage

ADA Inaccessibilities

-

Remedial Modifications

-

Vertical Circulation

ADA Inaccessibilities

- Handrails to the stairs are not accessible.

Remedial Modifications

- Refer to 2010 ADA Standards for accessible design Section 504 and 505 and Figures 505.4, 505.5, 505.6 505.7.2 & 505.10.2 for further guidance on accessible stairs. Handrails have to be continuous on both sides and handrail extensions need to be provided.

Toilet Rooms & Bathing Facilities

ADA Inaccessibilities

Remedial Modifications

-

Miscellaneous

ADA Inaccessibilities

-

Remedial Modifications

-

Notes:

This report has been generated from the S4 Surveys. Errors and Omissions are excepted.

Location: Stoddard Elementary School 4001 Calvert Street NW Washington, DC 20007		Survey Date: 01/27/2017
Survey conducted by: Mark Nutter Naquran Smith	Report completed by: Anwar Mahmood Architect (ADA) anwar.mahmood@dc.gov 202-727-9296	

Parking <u>ADA Inaccessibilities</u> <ul style="list-style-type: none"> <u>Remedial Modifications</u> <ul style="list-style-type: none">
Exterior Accessible Route <u>ADA Inaccessibilities</u> <ul style="list-style-type: none"> <u>Remedial Modifications</u> <ul style="list-style-type: none">
Curb Ramps & Ramps <u>ADA Inaccessibilities</u> <ul style="list-style-type: none"> • Accessible ramp is sloped too steep (11.9%) at points. <u>Remedial Modifications</u> <ul style="list-style-type: none"> • Maximum allowable slope for an accessible ramp is 8.33% (1:12). Refer to 2010 ADA Standards for accessible design Section 405 & Fig. 405.7.
Entrances & Doors <u>ADA Inaccessibilities</u> <ul style="list-style-type: none"> <u>Remedial Modifications</u> <ul style="list-style-type: none">
Lobbies & Corridors <u>ADA Inaccessibilities</u> <ul style="list-style-type: none"> <u>Remedial Modifications</u> <ul style="list-style-type: none">
Rooms & Spaces <u>ADA Inaccessibilities</u> <ul style="list-style-type: none"> <u>Remedial Modifications</u> <ul style="list-style-type: none">
Signage

ADA Inaccessibilities

-

Remedial Modifications

-

Vertical Circulation

ADA Inaccessibilities

-

Remedial Modifications

-

Toilet Rooms & Bathing Facilities

ADA Inaccessibilities

-

Remedial Modifications

-

Miscellaneous

ADA Inaccessibilities

-

Remedial Modifications

-

Notes:

This report has been generated from the S4 Surveys. Errors and Omissions are excepted.

Location: Stuart Hobson Middle School 410 E Street NE Washington DC 20002		Survey Date: 03/16/2017
Survey conducted by: Mark Nutter Naquran Smith	Report completed by: Anwar Mahmood Architect (ADA) anwar.mahmood@dc.gov 202-727-9296	

Parking

ADA Inaccessibilities

- Parking not provided.

Remedial Modifications

- No modification needed as this feature is not existing.
- Parking facility to be redesigned to incorporate standard and van accessible parking spaces. Refer to 2010 ADA Standards for accessible design Section 208.2 & Fig. 502.2.

Exterior Accessible Route

ADA Inaccessibilities

- Curbs on the accessible route.

Remedial Modifications

- Accessible route has to be in the state of good repair. It should be smooth and slip resistant.
- Wherever a route crosses a road or a differing traffic pattern, truncated domes need to be provided for the route to become accessible. Refer to 2010 ADA Standards for accessible design Chapter 7, Section 705.

Curb Ramps & Ramps

ADA Inaccessibilities

- Edge protection not provided.

Remedial Modifications

- Maximum allowable slope for an accessible ramp is 8.33% (1:12). Refer to 2010 ADA Standards for accessible design Section 405 & Fig. 405.7.
- The above Section / subsection needs to be referred for modifications to railings and edge protection.

Entrances & Doors

ADA Inaccessibilities

- Directional signage not provided.
- Curb at entrance threshold not beveled or ramped.
- Door operating pressure too high.
- Door in series like in Vestibules are inaccessible.

Remedial Modifications

- Entrances shall be provided in accordance with 2010 ADA Standards for accessible design Chapter 2, Section 206.4. Entrance doors, doorways and gates shall comply with 404 and shall be on an accessible

route complying with 402. Refer to 2010 ADA Standards for accessible design Section 703 and provided directional signage to the persons with disabilities towards accessible entrance.

- Curbs at the threshold needs to be ramped to a slope not to exceed 8.33%.
- Most interior doors are inaccessible and too heavy to operate. It is proposed to inspect all interior door / accessible interior doors on the path of travel to make sure these comply with 2010 ADA Standards for accessible design Section 404.2.8, 404.2.8.2 & 404.2.9.

Lobbies & Corridors

ADA Inaccessibilities

-

Remedial Modifications

-

Rooms & Spaces

ADA Inaccessibilities

-

Remedial Modifications

-

Signage

ADA Inaccessibilities

- Signage is inaccessible.

Remedial Modifications

- Signage needs to be modified to be accessible. Refer to 2010 ADA Standards for accessible design Section 703 for guidance.

Vertical Circulation

ADA Inaccessibilities

- Elevators not provided with accessible communications.
- Elevator Signage is not provided with Braille.
- Chair lifts can only be used with assistance. (OK if school policy and assistance is available during operation hours.)
-

Remedial Modifications

- Refer to 2010 ADA Standards for accessible design Section 407 and 408 for further guidance on accessibility.
- Refer to 2010 ADA Standards for accessible design Section 703.3 for Braille signage.
- Operation of Chair lift to be as per school policy for safety and security. During operation it has to be in attendance and assistance to remain available.

Toilet Rooms & Bathing Facilities

ADA Inaccessibilities

-

Remedial Modifications

-

Miscellaneous

ADA Inaccessibilities

-

Remedial Modifications

-

Notes:

This report has been generated from the S4 Surveys. Errors and Omissions are excepted.

Location: Takoma Education Campus 7010 Piney Branch Road NW Washington, DC 20012		Survey Date: 02/06/2017
Survey conducted by: Mark Nutter Naquran Smith	Report completed by: Anwar Mahmood Architect (ADA) anwar.mahmood@dc.gov 202-727-9296	

Parking ADA Inaccessibilities <ul style="list-style-type: none"> No vertical signage provided.. No accessible route provided. Remedial Modifications <ul style="list-style-type: none"> Refer to 2010 ADA Standards for accessible design Section 703. And provide accessible signage. Make sure the access aisles connect to an accessible route. Refer to 2010 ADA Standards for accessible design Chapter 4, Section 402. A drop-of area / Loading Zone may be incorporated and designed to be accessible. Refer to 2010 ADA Standards for accessible design Section 502, 503 & Fig. 503.3.
Exterior Accessible Route ADA Inaccessibilities <ul style="list-style-type: none"> Remedial Modifications <ul style="list-style-type: none">
Curb Ramps & Ramps ADA Inaccessibilities <ul style="list-style-type: none"> Remedial Modifications <ul style="list-style-type: none">
Entrances & Doors ADA Inaccessibilities <ul style="list-style-type: none"> Directional signage to the accessible entrance is not provided. Interior door requires a force of 11lbs. to operate. Remedial Modifications <ul style="list-style-type: none"> <i>Entrances</i> shall be provided in accordance with 2010 ADA Standards for accessible design Chapter 2, Section 206.4. <i>Entrance</i> doors, doorways and gates shall comply with 404 and shall be on an <i>accessible</i> route complying with 402. Refer to 2010 ADA Standards for accessible design Section 703 and provided directional signage to the persons with disabilities towards accessible entrance. Most interior doors are inaccessible and too heavy to operate. It is proposed to inspect all interior door / accessible interior doors on the path of travel to make sure these comply with 2010 ADA Standards for accessible design Section 404.2.8, 404.2.8.2 & 404.2.9.

Lobbies & Corridors

ADA Inaccessibilities

-

Remedial Modifications

-

Rooms & Spaces

ADA Inaccessibilities

-

Remedial Modifications

-

Signage

ADA Inaccessibilities

-

Remedial Modifications

-

Vertical Circulation

ADA Inaccessibilities

-

Remedial Modifications

-

Toilet Rooms & Bathing Facilities

ADA Inaccessibilities

-

Remedial Modifications

-

Miscellaneous

ADA Inaccessibilities

-

Remedial Modifications

-

Notes:

This report has been generated from the S4 Surveys. Errors and Omissions are excepted.

Location: Thomas Elementary School 650 Anacostia Ave. NE Washington, DC 20019		Survey Date: 06/21/2017
Survey conducted by: Mark Nutter Naquran Smith	Report completed by: Anwar Mahmood Architect (ADA) anwar.mahmood@dc.gov 202-727-9296	

Parking

ADA Inaccessibilities

- Parking lot has 70 Parking spaces with no standard accessible parking.

Remedial Modifications

- Parking facility to be redesigned to incorporate standard and van accessible parking spaces. Refer to 2010 ADA Standards for accessible design Section 208.2 & Fig. 502.2.
- On redesign of the Parking area, we need to make sure the access aisles connect to an accessible route. Refer to 2010 ADA Standards for accessible design Chapter 4, Section 402.
- Parking lot slopes on the accessible route, access aisles and accessible parking bays has to be modified to be accessible.
- A drop-off area / Loading Zone may be incorporated and designed to be accessible. Refer to 2010 ADA Standards for accessible design Section 502, 503 & Fig. 503.3.

Exterior Accessible Route

ADA Inaccessibilities

-

Remedial Modifications

-

Curb Ramps & Ramps

ADA Inaccessibilities

-

Remedial Modifications

-

Entrances & Doors

ADA Inaccessibilities

- Out of 4 only 1 accessible entrance.
- Directional signage to the accessible entrance is not provided.
- Interior door requires a force of 8lbs. to operate.

Remedial Modifications

- *Entrances* shall be provided in accordance with 2010 ADA Standards for accessible design Chapter 2, Section 206.4. *Entrance* doors, doorways and gates shall comply with 404 and shall be on an *accessible* route complying with 402. Refer to 2010 ADA Standards for accessible design Section 703 and provided directional signage to the persons with disabilities towards accessible entrance.

- Most interior doors are inaccessible and too heavy to operate. It is proposed to inspect all interior door / accessible interior doors on the path of travel to make sure these comply with 2010 ADA Standards for accessible design Section 404.2.8, 404.2.8.2 & 404.2.9.

Lobbies & Corridors

ADA Inaccessibilities

-

Remedial Modifications

-

Rooms & Spaces

ADA Inaccessibilities

-

Remedial Modifications

-

Signage

ADA Inaccessibilities

-

Remedial Modifications

-

Vertical Circulation

ADA Inaccessibilities

- All aspects and features of vertical circulation are inaccessible.

Remedial Modifications

- Refer to 2010 ADA Standards for accessible design Section 504 and 505 and Figures 505.4, 505.5, 505.6 505.7.2 & 505.10.2 for further guidance on accessible stairs. Handrails have to be continuous on both sides and handrail extensions need to be provided.

Toilet Rooms & Bathing Facilities

ADA Inaccessibilities

- Restrooms are inaccessible.

Remedial Modifications

- Accessible restrooms needs to be revisited to redesign for accessibility. Refer to 2010 ADA Standards for accessible design Chapter 6 and Section 603 onward relating to the inaccessibilities.

Miscellaneous

ADA Inaccessibilities

-

Remedial Modifications

-

Notes:

This report has been generated from the S4 Surveys. Errors and Omissions are excepted.

Location: Thomson Elementary School 1200 L Street NW Washington, DC 20005		Survey Date: 01/24/2017
Survey conducted by: Mark Nutter Naquran Smith	Report completed by: Anwar Mahmood Architect (ADA) anwar.mahmood@dc.gov 202-727-9296	

Parking

ADA Inaccessibilities

- Accessible isle is sloped too steep (10.1%) at places.

Remedial Modifications

- Refer to 2010 ADA Standards for accessible design Chapter 4, Section 402.

Exterior Accessible Route

ADA Inaccessibilities

- Accessible route is sloped too steep (6.5%) at places.
- Concrete sidewalk is uneven.
- No detectable warnings provided on curb ramps.

Remedial Modifications

- Refer to 2010 ADA Standards for accessible design Chapter 4, Section 402. Accessible route has to be in the state of good repair. It should be smooth and slip resistant. Refer to slope limitations in the quoted reference
- Wherever a route crosses a road or a differing traffic pattern, truncated domes need to be provided for the route to become accessible. Refer to 2010 ADA Standards for accessible design Chapter 7, Section 705.

Curb Ramps & Ramps

ADA Inaccessibilities

- Accessible ramp is sloped too steep at points.
- Railings are inaccessible.

Remedial Modifications

- Maximum allowable slope for an accessible ramp is 8.33% (1:12). Refer to 2010 ADA Standards for accessible design Section 405 & Fig. 405.7.
- The above Section / subsection needs to be referred for modifications to railings and edge protection.

Entrances & Doors

ADA Inaccessibilities

- Interior door requires excessive force to operate.

Remedial Modifications

- *Entrances* shall be provided in accordance with 2010 ADA Standards for accessible design Chapter 2, Section 206.4. *Entrance* doors, doorways and gates shall comply with 404 and shall be on an *accessible*

route complying with 402. Refer to 2010 ADA Standards for accessible design Section 703 and provided directional signage to the persons with disabilities towards accessible entrance.

- Most interior doors are inaccessible and too heavy to operate. It is proposed to inspect all interior door / accessible interior doors on the path of travel to make sure these comply with 2010 ADA Standards for accessible design Section 404.2.8, 404.2.8.2 & 404.2.9.

Lobbies & Corridors

ADA Inaccessibilities

-

Remedial Modifications

-

Rooms & Spaces

ADA Inaccessibilities

-

Remedial Modifications

-

Signage

ADA Inaccessibilities

- Directional signage not provided.

Remedial Modifications

- Refer to 2010 ADA Standards for accessible design Chapter 7, Section 703.

Vertical Circulation

ADA Inaccessibilities

- Handrails to the stairs are not accessible.

Remedial Modifications

- Refer to 2010 ADA Standards for accessible design Section 504 and 505 and Figures 505.4, 505.5, 505.6 505.7.2 & 505.10.2 for further guidance on accessible stairs. Handrails have to be continuous on both sides and handrail extensions need to be provided.

Toilet Rooms & Bathing Facilities

ADA Inaccessibilities

- Mirror is installed too high.

Remedial Modifications

- Refer to 2010 ADA Standards for accessible design Section 603 for further modifications. The reflecting surface of the mirror needs to be installed not to exceed 40" AFF.

Miscellaneous

ADA Inaccessibilities

-

Remedial Modifications

-

Notes:

This report has been generated from the S4 Surveys. Errors and Omissions are excepted.

Location: Truesdell Education Campus 800 Ingraham Street NW Washington, DC 20011		Survey Date: 03/21/2017
Survey conducted by: Mark Nutter Naquran Smith		Report completed by: Anwar Mahmood Architect (ADA) anwar.mahmood@dc.gov 202-727-9296

Parking	
<u>ADA Inaccessibilities</u> <ul style="list-style-type: none"> 	
<u>Remedial Modifications</u> <ul style="list-style-type: none"> 	
Exterior Accessible Route	
<u>ADA Inaccessibilities</u> <ul style="list-style-type: none"> • Accessible route is too steep at places (9.6%). • 1" Curb on the Accessible Route. 	
<u>Remedial Modifications</u> <ul style="list-style-type: none"> • Accessible route has to be in the state of good repair. It should be smooth and slip resistant. • Make sure the access aisles connect to an accessible route. Refer to 2010 ADA Standards for accessible design Chapter 4, Section 402. All curbs on the accessible route of travel have to be ramped. 	
Curb Ramps & Ramps	
<u>ADA Inaccessibilities</u> <ul style="list-style-type: none"> • No ramps provided in the facility. 	
<u>Remedial Modifications</u> <ul style="list-style-type: none"> • Maximum allowable slope for an accessible ramp is 8.33% (1:12). Refer to 2010 ADA Standards for accessible design Section 405 & Fig. 405.7. 	
Entrances & Doors	
<u>ADA Inaccessibilities</u> <ul style="list-style-type: none"> • ½" curb at the thresholds. • Interior door requires a force of 9lbs. to operate. 	
<u>Remedial Modifications</u> <ul style="list-style-type: none"> • <i>Curbs at the thresholds have to be ramped to be smooth. Entrances</i> shall be provided in accordance with 2010 ADA Standards for accessible design Chapter 2, Section 206.4. <i>Entrance</i> doors, doorways and gates shall comply with 404 and shall be on an <i>accessible</i> route complying with 402. Refer to 2010 ADA Standards for accessible design Section 703 and provided directional signage to the persons with disabilities towards accessible entrance. • Most interior doors are inaccessible and too heavy to operate. It is proposed to inspect all interior door / accessible interior doors on the path of travel to make sure these comply with 2010 ADA Standards for 	

accessible design Section 404.2.8, 404.2.8.2 & 404.2.9.

Lobbies & Corridors

ADA Inaccessibilities

- Elevators or Chairlifts not provided for vertical access.

Remedial Modifications

- Facility to be revisited for vertical / wheelchair accessibility.

Rooms & Spaces

ADA Inaccessibilities

-

Remedial Modifications

-

Signage

ADA Inaccessibilities

-

Remedial Modifications

-

Vertical Circulation

ADA Inaccessibilities

- Elevators or Chairlifts not provided for vertical access.
- Handrails to the stairs are not accessible.

Remedial Modifications

- Facility to be revisited for vertical / wheelchair accessibility.
- Refer to 2010 ADA Standards for accessible design Section 504 and 505 and Figures 505.4, 505.5, 505.6 505.7.2 & 505.10.2 for further guidance on accessible stairs. Handrails have to be continuous on both sides and handrail extensions need to be provided.

Toilet Rooms & Bathing Facilities

ADA Inaccessibilities

-

Remedial Modifications

-

Miscellaneous

ADA Inaccessibilities

-

Remedial Modifications

-

Notes:

This report has been generated from the S4 Surveys. Errors and Omissions are excepted.

Location: Turner Elementary School 3264 Stanton Road SE Washington, DC 20032		Survey Date: 06/15/2017
Survey conducted by: Mark Nutter Naquran Smith	Report completed by: Anwar Mahmood Architect (ADA) anwar.mahmood@dc.gov 202-727-9296	

Parking

ADA Inaccessibilities

- Parking lot has 36 Parking spaces with no standard accessible parking.

Remedial Modifications

- Parking facility to be redesigned to incorporate standard and van accessible parking spaces. Refer to 2010 ADA Standards for accessible design Section 208.2 & Fig. 502.2.
- On redesign of the Parking area, we need to make sure the access aisles connect to an accessible route. Refer to 2010 ADA Standards for accessible design Chapter 4, Section 402.
- Parking lot slopes on the accessible route, access aisles and accessible parking bays has to be modified to be accessible.
- A drop-off area / Loading Zone may be incorporated and designed to be accessible. Refer to 2010 ADA Standards for accessible design Section 502, 503 & Fig. 503.3.

Exterior Accessible Route

ADA Inaccessibilities

- No detectable warnings provided on curb ramps.

Remedial Modifications

- Wherever a route crosses a road or a differing traffic pattern, truncated domes need to be provided for the route to become accessible. Refer to 2010 ADA Standards for accessible design Chapter 7, Section 705.

Curb Ramps & Ramps

ADA Inaccessibilities

-

Remedial Modifications

-

Entrances & Doors

ADA Inaccessibilities

- Directional signage to the accessible entrance is not provided.

Remedial Modifications

- *Entrances* shall be provided in accordance with 2010 ADA Standards for accessible design Chapter 2, Section 206.4. *Entrance* doors, doorways and gates shall comply with 404 and shall be on an *accessible* route complying with 402. Refer to 2010 ADA Standards for accessible design Section 703 and provided directional signage to the persons with disabilities towards accessible entrance.

- Most interior doors are inaccessible and too heavy to operate. It is proposed to inspect all interior door / accessible interior doors on the path of travel to make sure these comply with 2010 ADA Standards for accessible design Section 404.2.8, 404.2.8.2 & 404.2.9.

Lobbies & Corridors

ADA Inaccessibilities

-

Remedial Modifications

-

Rooms & Spaces

ADA Inaccessibilities

-

Remedial Modifications

-

Signage

ADA Inaccessibilities

-

Remedial Modifications

-

Vertical Circulation

ADA Inaccessibilities

-

Remedial Modifications

-

Toilet Rooms & Bathing Facilities

ADA Inaccessibilities

Remedial Modifications

-

Miscellaneous

ADA Inaccessibilities

-

Remedial Modifications

-

Notes:

This report has been generated from the S4 Surveys. Errors and Omissions are excepted.

Location: Walker Jones Educational campus 1125 New Jersey Ave. NW Washington DC 20001		Survey Date: 03/17/2017
Survey conducted by: Mark Nutter Naquran Smith	Report completed by: Anwar Mahmood Architect (ADA) anwar.mahmood@dc.gov 202-727-9296	

Parking <u>ADA Inaccessibilities</u> <ul style="list-style-type: none"> N/A <u>Remedial Modifications</u> <ul style="list-style-type: none">
Exterior Accessible Route <u>ADA Inaccessibilities</u> <ul style="list-style-type: none"> No detectable warnings provided on curb ramps. <u>Remedial Modifications</u> <ul style="list-style-type: none"> Wherever a route crosses a road or a differing traffic pattern, truncated domes need to be provided for the route to become accessible. Refer to 2010 ADA Standards for accessible design Chapter 7, Section 705.
Curb Ramps & Ramps <u>ADA Inaccessibilities</u> <ul style="list-style-type: none"> N/A <u>Remedial Modifications</u> <ul style="list-style-type: none">
Entrances & Doors <u>ADA Inaccessibilities</u> <ul style="list-style-type: none"> Directional signage to the accessible entrance is not provided. <u>Remedial Modifications</u> <ul style="list-style-type: none"> <i>Entrances</i> shall be provided in accordance with 2010 ADA Standards for accessible design Chapter 2, Section 206.4. <i>Entrance</i> doors, doorways and gates shall comply with 404 and shall be on an <i>accessible</i> route complying with 402. Refer to 2010 ADA Standards for accessible design Section 703 and provided directional signage to the persons with disabilities towards accessible entrance.
Lobbies & Corridors <u>ADA Inaccessibilities</u> <ul style="list-style-type: none"> N/A <u>Remedial Modifications</u> <ul style="list-style-type: none">
Rooms & Spaces <u>ADA Inaccessibilities</u> <ul style="list-style-type: none"> N/A

Remedial Modifications

-

Signage

ADA Inaccessibilities

- N/A

Remedial Modifications

-

Vertical Circulation

ADA Inaccessibilities

- Elevator is not provided with accessible communication system.
- Braille not provided on the signage.

Remedial Modifications

- Refer to 2010 ADA Standards for accessible design Chapter 7 for modifications to the Communication Systems.
- Refer to 2010 ADA Standards for accessible design Section 703 for signage modifications.

Toilet Rooms & Bathing Facilities

ADA Inaccessibilities

- N/A

Remedial Modifications

-

Miscellaneous

ADA Inaccessibilities

- N/A

Remedial Modifications

-

Notes:

This report has been generated from the S4 Surveys. Errors and Omissions are excepted.

Location: Washington Metro High School 300 Bryant Street NW Washington, DC 20001		Survey Date: 01/23/2017
Survey conducted by: Mark Nutter Naquran Smith		Report completed by: Anwar Mahmood Architect (ADA) anwar.mahmood@dc.gov 202-727-9296

Parking

ADA Inaccessibilities

- Parking lot has 43 Parking spaces with no accessible parking.
- Slopes at parking lot varies at 14.2%.
- No access aisles provided.
- No accessible route provided.

Remedial Modifications

- Parking facility to be redesigned to incorporate standard and van accessible parking spaces. Refer to 2010 ADA Standards for accessible design Section 208.2 & Fig. 502.2.
- On redesign of the Parking area, we need to make sure the access aisles connect to an accessible route. Refer to 2010 ADA Standards for accessible design Chapter 4, Section 402.
- Parking lot slopes on the accessible route, access aisles and accessible parking bays has to be modified to be accessible.
- A drop-of area / Loading Zone may be incorporated and designed to be accessible. Refer to 2010 ADA Standards for accessible design Section 502, 503 & Fig. 503.3.

Exterior Accessible Route

ADA Inaccessibilities

- Accessible route is sloped too steep.

Remedial Modifications

- On redesign of the Parking area, we need to make sure the access aisles connect to an accessible route. Refer to 2010 ADA Standards for accessible design Chapter 4, Section 402.
- Wherever a route crosses a road or a differing traffic pattern, truncated domes need to be provided for the route to become accessible. Refer to 2010 ADA Standards for accessible design Chapter 7, Section 705.

Curb Ramps & Ramps

ADA Inaccessibilities

- Accessible ramp is sloped too steep at points.
- All ramps and curb ramps are inaccessible.

Remedial Modifications

- Maximum allowable slope for an accessible ramp is 8.33% (1:12). Refer to 2010 ADA Standards for accessible design Section 405 & Fig. 405.7.

- All ramps and curb ramps need to be revisited for accessible modifications.
- The above Section / subsection needs to be referred for modifications to railings and edge protection.

Entrances & Doors

ADA Inaccessibilities

- All entrances are inaccessible.
- Interior door requires excessive force to operate.

Remedial Modifications

- *Entrances* shall be provided in accordance with 2010 ADA Standards for accessible design Chapter 2, Section 206.4. *Entrance* doors, doorways and gates shall comply with 404 and shall be on an *accessible* route complying with 402. Refer to 2010 ADA Standards for accessible design Section 703 and provided directional signage to the persons with disabilities towards accessible entrance.
- Most interior doors are inaccessible and too heavy to operate. It is proposed to inspect all interior door / accessible interior doors on the path of travel to make sure these comply with 2010 ADA Standards for accessible design Section 404.2.8, 404.2.8.2 & 404.2.9.

Lobbies & Corridors

ADA Inaccessibilities

- EAS is inaccessible.

Remedial Modifications

- EAS needs to be modified to be accessible. Refer to 2010 ADA Standards for accessible design Section 702.

Rooms & Spaces

ADA Inaccessibilities

- EAS is inaccessible.
- Controls are installed too high.
- Reach ranges for Countertops are inaccessible.

Remedial Modifications

- Refer to 2010 ADA Standards for accessible design Section 308 for accessible heights. All controls to be installed at a height not to exceed 48" AFF.
- EAS needs to be modified to be accessible. Refer to 2010 ADA Standards for accessible design Section 702.

Signage

ADA Inaccessibilities

- Signage is inaccessible. Braille text not provided.

Remedial Modifications

- Refer to 2010 ADA Standards for accessible design Section 703.

Vertical Circulation

ADA Inaccessibilities

- Handrails to the stairs are not accessible.

Remedial Modifications

- Refer to 2010 ADA Standards for accessible design Section 504 and 505 and Figures 505.4, 505.5, 505.6 505.7.2 & 505.10.2 for further guidance on accessible stairs. Handrails have to be continuous on both sides and handrail extensions need to be provided.

Toilet Rooms & Bathing Facilities

ADA Inaccessibilities

- Toilet rooms are inaccessible.

Remedial Modifications

- Refer to 2010 ADA Standards for accessible design Section 703, 703.6.1, for further modifications.
- Accessible restrooms needs to be revisited to redesign for accessibility. Refer to 2010 ADA Standards for accessible design Chapter 6 and Section 603 onward relating to the inaccessibilities.

Miscellaneous**ADA Inaccessibilities**

-

Remedial Modifications

-

Notes:

This report has been generated from the S4 Surveys. Errors and Omissions are excepted.

Location: Watkins Elementary School 420 12 th . Street SE Washington DC		Survey Date: 03/21/2017
Survey conducted by: Mark Nutter Naquran Smith	Report completed by: Anwar Mahmood Architect (ADA) anwar.mahmood@dc.gov 202-727-9296	

Parking
<u>ADA Inaccessibilities</u> <ul style="list-style-type: none"> • N/A <u>Remedial Modifications</u> <ul style="list-style-type: none"> •
Exterior Accessible Route
<u>ADA Inaccessibilities</u> <ul style="list-style-type: none"> • N/A <u>Remedial Modifications</u> <ul style="list-style-type: none"> •
Curb Ramps & Ramps
<u>ADA Inaccessibilities</u> <ul style="list-style-type: none"> • N/A <u>Remedial Modifications</u> <ul style="list-style-type: none"> •
Entrances & Doors
<u>ADA Inaccessibilities</u> <ul style="list-style-type: none"> • N/A <u>Remedial Modifications</u> <ul style="list-style-type: none"> •
Lobbies & Corridors
<u>ADA Inaccessibilities</u> <ul style="list-style-type: none"> • N/A <u>Remedial Modifications</u> <ul style="list-style-type: none"> •
Rooms & Spaces
<u>ADA Inaccessibilities</u> <ul style="list-style-type: none"> • N/A <u>Remedial Modifications</u> <ul style="list-style-type: none"> •
Signage
<u>ADA Inaccessibilities</u>

<ul style="list-style-type: none"> • N/A <p><u>Remedial Modifications</u></p> <ul style="list-style-type: none"> •
Vertical Circulation
<p><u>ADA Inaccessibilities</u></p> <ul style="list-style-type: none"> • N/A <p><u>Remedial Modifications</u></p> <ul style="list-style-type: none"> •
Toilet Rooms & Bathing Facilities
<p><u>ADA Inaccessibilities</u></p> <ul style="list-style-type: none"> • N/A <p><u>Remedial Modifications</u></p> <ul style="list-style-type: none"> •
Miscellaneous
<p><u>ADA Inaccessibilities</u></p> <ul style="list-style-type: none"> • N/A <p><u>Remedial Modifications</u></p> <ul style="list-style-type: none"> •
Notes:

This report has been generated from the S4 Surveys. Errors and Omissions are excepted.

(School under Construction)

Location: West Education Campus 1338 Farragut Street NW Washington, DC 20011		Survey Date: 02/08/2017
Survey conducted by: Mark Nutter Naquran Smith	Report completed by: Anwar Mahmood Architect (ADA) anwar.mahmood@dc.gov 202-727-9296	

Parking

ADA Inaccessibilities

- Parking lot has 22 Parking spaces with no accessible parking.
- No access aisles provided.
- No accessible route provided.

Remedial Modifications

- Parking facility to be redesigned to incorporate standard and van accessible parking spaces. Refer to 2010 ADA Standards for accessible design Section 208.2 & Fig. 502.2.
- On redesign of the Parking area, we need to make sure the access aisles connect to an accessible route. Refer to 2010 ADA Standards for accessible design Chapter 4, Section 402.
- Parking lot slopes on the accessible route, access aisles and accessible parking bays has to be modified to be accessible.
- A drop-of area / Loading Zone may be incorporated and designed to be accessible. Refer to 2010 ADA Standards for accessible design Section 502, 503 & Fig. 503.3.

Exterior Accessible Route

ADA Inaccessibilities

-

Remedial Modifications

-

Curb Ramps & Ramps

ADA Inaccessibilities

-

Remedial Modifications

-

Entrances & Doors

ADA Inaccessibilities

- Round Door Knobs on all Classroom doors.
- Interior door requires a force of 13lbs. to operate.

Remedial Modifications

- Refer to 2010 ADA Standards for accessible design Section 309. Round door knobs are not accessible and may be replaced by latch or lever type door handles which would not require pinching or tight

grasping and twisting of the wrist.

- *Entrances* shall be provided in accordance with 2010 ADA Standards for accessible design Chapter 2, Section 206.4. *Entrance* doors, doorways and gates shall comply with 404 and shall be on an *accessible* route complying with 402. Refer to 2010 ADA Standards for accessible design Section 703 and provided directional signage to the persons with disabilities towards accessible entrance.
- Most interior doors are inaccessible and too heavy to operate. It is proposed to inspect all interior door / accessible interior doors on the path of travel to make sure these comply with 2010 ADA Standards for accessible design Section 404.2.8, 404.2.8.2 & 404.2.9.

Lobbies & Corridors

ADA Inaccessibilities

- Levels not accessible by wheelchair.

Remedial Modifications

- Elevator / Chairlift needs to be incorporated for the facility to be accessible in this aspect.

Rooms & Spaces

ADA Inaccessibilities

- Emergency alert system is inaccessible.

Remedial Modifications

-

Signage

ADA Inaccessibilities

- Inaccessible in entire facility.

Remedial Modifications

- Refer to 2010 ADA Standards for accessible design Section 703, 703.6.1, for further modifications.

Vertical Circulation

ADA Inaccessibilities

- Handrails to the stairs are not accessible.
- Elevators not provided.

Remedial Modifications

- Refer to 2010 ADA Standards for accessible design Section 504 and 505 and Figures 505.4, 505.5, 505.6 505.7.2 & 505.10.2 for further guidance on accessible stairs. Handrails have to be continuous on both sides and handrail extensions need to be provided.
-

Toilet Rooms & Bathing Facilities

ADA Inaccessibilities

- Accessible signage is not provided to the restroom doors.
- Toilet paper dispenser is installed too high.
- Toilet stalls are not accessible.

Remedial Modifications

- Refer to 2010 ADA Standards for accessible design Section 703, 703.6.1, for further modifications.
- Accessible restrooms needs to be revisited to redesign for accessibility. Refer to 2010 ADA Standards for accessible design Chapter 6 and Section 603 onward relating to the inaccessibilities.

- Refer to 2010 ADA Standards for accessible design Chapter 6 for modifications.

Miscellaneous

ADA Inaccessibilities

-

Remedial Modifications

-

Notes:

This report has been generated from the S4 Surveys. Errors and Omissions are excepted.

Needs to revisit the ramp part of survey.

Location: Wheatley Education Campus 1299 Neal Street NE Washington, DC 20002		Survey Date: 03/03/2017
Survey conducted by: Mark Nutter Naquran Smith	Report completed by: Anwar Mahmood Architect (ADA) anwar.mahmood@dc.gov 202-727-9296	

Parking <u>ADA Inaccessibilities</u> <ul style="list-style-type: none"> • N/A <u>Remedial Modifications</u> <ul style="list-style-type: none"> •
Exterior Accessible Route <u>ADA Inaccessibilities</u> <ul style="list-style-type: none"> • <u>Remedial Modifications</u> <ul style="list-style-type: none"> •
Curb Ramps & Ramps <u>ADA Inaccessibilities</u> <ul style="list-style-type: none"> • <u>Remedial Modifications</u> <ul style="list-style-type: none"> •
Entrances & Doors <u>ADA Inaccessibilities</u> <ul style="list-style-type: none"> • One out 3 entrances is accessible. • Directional signage to the accessible entrance is not provided. • Interior door requires a force of 15lbs. to operate. <u>Remedial Modifications</u> <ul style="list-style-type: none"> • <i>Entrances</i> shall be provided in accordance with 2010 ADA Standards for accessible design Chapter 2, Section 206.4. <i>Entrance</i> doors, doorways and gates shall comply with 404 and shall be on an <i>accessible</i> route complying with 402. Refer to 2010 ADA Standards for accessible design Section 703 and provided directional signage to the persons with disabilities towards accessible entrance. • Most interior doors are inaccessible and too heavy to operate. It is proposed to inspect all interior door / accessible interior doors on the path of travel to make sure these comply with 2010 ADA Standards for accessible design Section 404.2.8, 404.2.8.2 & 404.2.9.
Lobbies & Corridors <u>ADA Inaccessibilities</u> <ul style="list-style-type: none"> • <u>Remedial Modifications</u> <ul style="list-style-type: none"> •

Rooms & Spaces

ADA Inaccessibilities

-

Remedial Modifications

-

Signage

ADA Inaccessibilities

-

Remedial Modifications

-

Vertical Circulation

ADA Inaccessibilities

- EAS is not provided on elevators.

Remedial Modifications

-

Toilet Rooms & Bathing Facilities

ADA Inaccessibilities

- Plumbing under the vanity / sink is exposed and not insulated.

Remedial Modifications

- Plumbing under the sinks need to be insulated with insulating jackets or other means and methods to protect the PWD from getting in contact with the hot and cold plumbing.

Miscellaneous

ADA Inaccessibilities

-

Remedial Modifications

-

Notes:

This report has been generated from the S4 Surveys. Errors and Omissions are excepted.

Location: Whittier Education Campus 6201 5 th St. NW Washington DC 20011	Survey Date: 02/23/2017
Survey conducted by: Mark Nutter Naquran Smith	Report completed by: Anwar Mahmood Architect (ADA) anwar.mahmood@dc.gov 202-727-9296

Parking

ADA Inaccessibilities

- Parking lot has 27 Parking spaces with no Van accessible parking.
- No accessible signage provided.
- No accessible route provided.

Remedial Modifications

- Parking facility to be redesigned to incorporate standard and van accessible parking spaces. Refer to 2010 ADA Standards for accessible design Section 208.2 & Fig. 502.2.
- On redesign of the Parking area, we need to make sure the access aisles connect to an accessible route and accessible signage to accessible parking spaces be provided. Refer to 2010 ADA Standards for accessible design Chapter 4, Section 402 and chapter 7 Section 703.
- A drop-of area / Loading Zone may be incorporated and designed to be accessible. Refer to 2010 ADA Standards for accessible design Section 502, 503 & Fig. 503.3.

Exterior Accessible Route

ADA Inaccessibilities

- No detectable warnings provided on curb ramps.

Remedial Modifications

- Wherever a route crosses a road or a differing traffic pattern, truncated domes need to be provided for the route to become accessible. Refer to 2010 ADA Standards for accessible design Chapter 7, Section 705.

Curb Ramps & Ramps

ADA Inaccessibilities

- Accessible ramp without accessible railings.
- Ramp is not provided with edge protection.
- Ramp landings are inaccessible.

Remedial Modifications

- Maximum allowable slope for an accessible ramp is 8.33% (1:12). Refer to 2010 ADA Standards for accessible design Section 405 & Fig. 405.7.
- The above Section / subsection needs to be referred for modifications to railings and edge protection.

Entrances & Doors

ADA Inaccessibilities

- No accessible entrance provided.
- Interior door requires a force of 11lbs. to operate.

Remedial Modifications

- *Entrances* shall be provided in accordance with 2010 ADA Standards for accessible design Chapter 2, Section 206.4. *Entrance* doors, doorways and gates shall comply with 404 and shall be on an *accessible* route complying with 402. Refer to 2010 ADA Standards for accessible design Section 703 and provided directional signage to the persons with disabilities towards accessible entrance.
- Most interior doors are inaccessible and too heavy to operate. It is proposed to inspect all interior door / accessible interior doors on the path of travel to make sure these comply with 2010 ADA Standards for accessible design Section 404.2.8, 404.2.8.2 & 404.2.9.

Lobbies & Corridors

ADA Inaccessibilities

- EAS needs modifications to be accessible.

Remedial Modifications

- Refer to 2010 ADA Standards for accessible design Section 702 for accessible modifications.

Rooms & Spaces

ADA Inaccessibilities

- EAS needs modifications to be accessible.

Remedial Modifications

- Refer to 2010 ADA Standards for accessible design Section 702 for accessible modifications.

Signage

ADA Inaccessibilities

- Directional signage not provided.

Remedial Modifications

- Refer to 2010 ADA Standards for accessible design Section 703 for accessible modifications.

Vertical Circulation

ADA Inaccessibilities

- Handrails to the stairs are not accessible.
- EAS in elevator is inaccessible.

Remedial Modifications

- Refer to 2010 ADA Standards for accessible design Section 504 and 505 and Figures 505.4, 505.5, 505.6 505.7.2 & 505.10.2 for further guidance on accessible stairs. Handrails have to be continuous on both sides and handrail extensions need to be provided.
- Refer to 2010 ADA Standards for accessible design Chapter 7 for accessible modifications.

Toilet Rooms & Bathing Facilities

ADA Inaccessibilities

- Toilet rooms are not accessible.

Remedial Modifications

- Refer to 2010 ADA Standards for accessible design Section 703, 703.6.1, for further modifications.
- Accessible restrooms needs to be revisited to redesign for accessibility. Refer to 2010 ADA Standards for accessible design Chapter 6 and Section 603 onward relating to the inaccessibilities.

Miscellaneous

ADA Inaccessibilities

-

Remedial Modifications

-

Notes:

This report has been generated from the S4 Surveys. Errors and Omissions are excepted.

Location: Woodrow Wilson High School 3950 Chesapeake Street NW Washington DC 20016		Survey Date: 01/30/2017
Survey conducted by: Mark Nutter Naquran Smith	Report completed by: Anwar Mahmood Architect (ADA) anwar.mahmood@dc.gov 202-727-9296	

Parking

ADA Inaccessibilities

- Inadequate accessible parking provided. Total Spaces 108 (Accessible 4)
- Parking spaces provided do not comply with ADA Standards.

Remedial Modifications

- Parking facility to be redesigned to incorporate standard and van accessible parking spaces as per Schedule. One more standard accessible parking space is required to be provided. Refer to 2010 ADA Standards for accessible design Section 208.2 & Fig. 502.2.
- On redesign of the Parking area, we need to make sure the access aisles connect to an accessible route. Refer to 2010 ADA Standards for accessible design Chapter 4, Section 402.
- Parking lot slopes on the accessible route, access aisles and accessible parking bays has to be modified to be accessible.
- A drop-of area / Loading Zone may be incorporated and designed to be accessible. Refer to 2010 ADA Standards for accessible design Section 502, 503 & Fig. 503.3.

Exterior Accessible Route

ADA Inaccessibilities

- N/A

Remedial Modifications

-

Curb Ramps & Ramps

ADA Inaccessibilities

- Ramps provided with inaccessible handrails.

Remedial Modifications

- Maximum allowable slope for an accessible ramp is 8.33% (1:12). Refer to 2010 ADA Standards for accessible design Section 405 & Fig. 405.7.
- The above Section / subsection needs to be referred for modifications to handrails and edge protection.

Entrances & Doors

ADA Inaccessibilities

- Directional signage to the accessible entrance is not provided.

Remedial Modifications

- *Entrances* shall be provided in accordance with 2010 ADA Standards for accessible design Chapter 2, Section 206.4. *Entrance* doors, doorways and gates shall comply with 404 and shall be on an *accessible* route complying with 402. Refer to 2010 ADA Standards for accessible design Section 703 and provide directional signage to the persons with disabilities towards accessible entrance.
- Note: Most interior doors are inaccessible and too heavy to operate. It is proposed to inspect all interior door / accessible interior doors on the path of travel to make sure these comply with 2010 ADA Standards for accessible design Section 404.2.8, 404.2.8.2 & 404.2.9.

Lobbies & Corridors

ADA Inaccessibilities

- N/A

Remedial Modifications

-

Rooms & Spaces

ADA Inaccessibilities

- Accessible counters tops not provided.

Remedial Modifications

- Refer to 2010 ADA Standards for accessible design Section 902 and corresponding Subsections.

Signage

ADA Inaccessibilities

- Directional signage to the accessible entrance is not provided.

Remedial Modifications

- Refer to 2010 ADA Standards for accessible design Section 703 for technical assistance on signage.

Vertical Refer to 2010 ADA Standards for accessible design Section 504 **Circulation**

ADA Inaccessibilities

- Handrails to the stairs are not accessible.

Remedial Modifications

- Refer to 2010 ADA Standards for accessible design Section 504 and 505 and Figures 505.4, 505.5, 505.6 505.7.2 & 505.10.2 for further guidance on accessible stairs. Handrails have to be continuous on both sides and handrail extensions need to be provided.

Toilet Rooms & Bathing Facilities

ADA Inaccessibilities

- Directional signage to the accessible toilet is not provided.
- Mirror is installed too high i.e 44" AFF.

Remedial Modifications

- Refer to 2010 ADA Standards for accessible design Section 703, 703.6.1, for further modifications.
- Accessible restrooms needs to be revisited to redesign for accessibility. Refer to 2010 ADA Standards for accessible design Chapter 6 and Section 603 onward relating to the inaccessibilities.
- Refer to 2010 ADA Standards for accessible design Section 603.3 for technical assistance. Reflecting surface of the mirror not to exceed 40" AFF.

Miscellaneous

ADA Inaccessibilities

- N/A

Remedial Modifications

•

Notes:

This report has been generated from the S4 Surveys. Errors and Omissions are excepted.