

LOTTERY

D.C. Lottery and Charitable Games Control Board - FY 2014/2015 Oversight Questions

1. Please provide an updated organization chart and current Schedule A.
Please see attachment 1

2. Please provide the following:
 - a. A list of all employees who receive cellphones, personal digital assistants, or similar communications devices at agency expense;
Please see attachment 2
 - b. A list of all vehicles (year, make, model) owned, leased, or otherwise used by the agency and to whom the vehicle is assigned. Please include lease amount (if applicable) and date the lease expires;
➤ The DC Lottery owns all of its vehicles. Please see attachment 3
 - c. A list of employee bonuses or special award pay granted in FY14 and FY15, to date;
➤ Not Applicable
 - d. A list of travel expenses, arranged by employee; and
Please see attachment 4
 - e. A list of the total overtime and workman's compensation payments paid in FY14 and FY15, to date.
Please see attachment 5

3. How are our lottery sales and transfer to the General Fund performing as compared to our anticipated projections for FY 2015? How was performance for FY 2014? How does this compare with FY 13 performance? What was the actual revenue loss for FY14 as a result of not having an instant ticket contract in place?

DCLB's FY'15 year to date transfer (as of January 31, 2015) is \$18 million which is on target for its projected \$55 million. The FY'14 transfer totaled \$54.9 million compared to the \$68.3 million transferred in FY'13. The lack of an instant ticket contract was a major contributing factor that led to the \$13.4 million or 19.6% decrease in the transfer to the General Fund.

Total lottery sales for FY'15 through February 17th total nearly \$76.8 million as compared to \$81.1 million through the same period last year. While our numbers games sales are up from last year by nearly \$7 million our instant ticket sales are down by over \$11 million. The return of instant tickets to our game portfolio has already begun to narrow the sales gap between this year and last year.

4. What new games were introduced in FY2014? Are any new games planned for FY15? How are any new games performing? What games were retired, if any, in FY14 and FY15 to date?

In FY'14 the DCLB introduced four new Tap N Play (TNP) games and eight new Fast Play games. We also introduced a new add-on feature for DC3 and DC4 called Lucky Sum. The new games launched in FY'14 are performing well. In FY'15 we are planning approximately six new Tap N Play games and eight new Fast Play games. Both the Tap N Play and Fast Play product lines have seen strong growth trends. In FY'15 the Lottery also participated in the national roll-out of the Monopoly Millionaires Club game, which underperformed sales expectations in all participating states. Ticket sales of this game were suspended in December as the participating lotteries reevaluate the game. On February 15, 2015 the Lottery launched a brand new multi-state draw game called Lucky for Life. The Lottery expects this game to be popular with our players as it features an exciting top prize of \$1,000 a day for life. We are also planning about 20 new instant scratch tickets for the remainder of this fiscal year.

5. What is the status of instant tickets? Please provide a complete chronology to date from the start of the posting of solicitation CFOPD-13-R-003 to the present.

Please see attachment 6

6. How is the lottery store at Union Station performing? What were projected sales goals and revenue for FY 14 compared to actuals? What are the sales goals and revenue for FY15 and actuals to date?

Since its opening in December 2012, the Official DC Lottery Store at Union Station has continued to see year over year increases in sales performance. The comparison between FY'14 projected and actual numbers is no exception. Projected sales for FY'14 were forecast to perform at an increase of 15% over FY'13 sales which were \$1,833,107. Sales surpassed that goal, realizing a sizable 25.6% increase and totaling \$2,302,009. For FY'15, we have ambitiously set the bar for a projected increase of 15% in sales over FY'14. Sales to date for FY'15 total \$923,065, a 7.7% increase over sales at this time last year which were \$856,686. With onsite player incentives, exclusive promotions, and revenue generated from the agency's continuing sales events at Union Station, we expect another banner year at this location. The Official DC Lottery Store at Union Station has come to be known as a 'winning destination,' and is the only exclusively DC Lottery store in our corps of DC Lottery agent retail locations.

The Union Station Lottery Store is a showcase for the DC Lottery easily accessible to visitors from all over the country. It operates as a flagship location, is home to many promotions and one-of-a-kind events and is uniquely situated for growing sales and favorable publicity.

7. How is the “Lucky Lottery Mobile” performing?

The Lucky Lottery Mobile (LLM) is performing well. Mobile sales for the last three years were approximately \$141,000. During the winter months the LLM hibernates, but is now gearing up for spring. The truck is currently undergoing a new look for our loyal players and those new to the lottery. Come the beginning of April, the truck is expected to hit the streets as a new “Awareness Mobile” by making more appearances in the community. Going mobile was a positive thing to do for our brand. It permits DCLB to easily showcase and sell products, educate players about our mission while raising revenue for the vital city services and programs we support. Players in all eight wards get a chance to have a little lottery fun and brighten their day.

The lottery is in the process of securing a CBE for mobile services. The CBE will be responsible for staffing the truck’s daily operation.

8. What are any other actions the Lottery has taken or is pursuing to become more competitive with Maryland and Virginia? We’ve previously discussed the idea of working with WMATA in metro stations. Is there any update on that effort?

The Lottery has spent the last several years trying to maintain a competitive position in a very crowded gaming landscape. Being surrounded by two very large and successful lotteries as well as many other gaming entities (casinos) has made our task very challenging. Opening in July 2016, the MGM casino will be knocking right at our backdoor, but we are optimistic that the return of a full portfolio of scratch tickets will lessen the impact. We also hold the competitive edge (not currently being offered in MD/VA) for the recent launch of the brand new multi-state draw game, Lucky for Life.

WMATA has not been responsive over the years. They have exhibited no interest in partnering with us for the sales of our product. As a result, we have focused on other more productive ways to promote our program and increase sales.

9. How many establishments in Washington, DC sell lottery tickets? Do you feel this is a sufficient amount, and sufficient locations? How does this compare to the past five years? How many outlets are planned or anticipated for FY15 and the next five years?

Currently, in the District of Columbia we have 486 establishments that sell DC Lottery tickets. While this represents an increase since 2010, growth in recent years has slowed. We’ve added many new locations, but many other existing locations have disappeared due to redevelopment and natural attrition. Nevertheless, the District’s growing population provides the lottery with an opportunity to expand its presence in social settings (bars, restaurants, lounges etc.). These settings are prime venues for the sale of our tickets. To that end, we are in the process of acquiring a CBE to begin a major recruitment effort for new lottery locations. We expect to have between 550 and 600 lottery sales locations within the next five years.

10. How is Mega Millions performing? How is Powerball performing? How have these products impacted the transfer to the general fund? Have they impacted the lottery in other ways- please explain?

Sales for the Mega Millions multi-state lottery game saw a dramatic increase in FY'14 compared to FY'13 numbers. FY'14 sales totaled \$7.5 million, compared to only \$4.9 million in FY'13. This increase is attributed to sales spikes that accompany higher jackpots. FY'15 sales for this game are currently lower by 30% compared to the same time last year. This trend is not unique to the District. Lotteries nationally are feeling the impact of lower jackpots on Mega Million sales.

Powerball sales in FY'14 totaled \$9.8 million, a decrease of \$6.4 million or 39.6% from last year's sales of \$16.2 million. Again, this decline is wholly due to smaller jackpots available for players in FY'14. Thus far in FY'15, Powerball sales are tracking slightly ahead of last year due to the recent high jackpot—\$564 million—the third highest jackpot in the history of the Powerball game.

12. Please list each contract, procurement, lease, and grant (“contract”) awarded, entered into, extended and option years exercised, by your agency during FY13, FY14, and FY15 to date. For each contract, please provide the following information, where applicable:
- The name of the contracting party;
 - The nature of the contract, including the end product or service;
 - The dollar amount of the contract, including budgeted and actually spent amounts;
 - The term of the contract;
 - Whether the contract was competitively bid or not;
 - The name of the agency's contract monitor and the results of any monitoring activity; and
 - Funding source.

Please see attachment 7

13. Please list all RFPs that are out for solicitation, along with a brief description. What RFPs are being planned for solicitation (topic and description)?

		New Solicitations											
CFOPD-15-R-006	TBD	DCLB Auditing Services	TBD	Base + 4 years	TBD	\$ 185,000.00	\$ 185,000.00	\$ 185,000.00	DCLB	Anthony Stover	Competitive	Anthony Edwards	To be Issued 2nd week in Feb
CFOPD-15-R-027	TBD	Lottery Retail Enhancement	TBD	Base + 4 years	TBD	\$ 200,000.00	\$ 200,000.00	\$ 200,000.00	DCLB	Anthony Stover	Set Aside	Gwen Washington	needs review from Progam Office
CFOPD-15-R-022	TBD	CLB Warehouse Service	TBD	Base + 4 years	TBD	TBD	TBD	TBD	DCLB	Dorothy Fortuny	Set Aside	Gwen Washington	Bids are under review; anticipate March award
CFOPD-15-R-014	TBD	DCLB Best Practices	TBD	Base + 4 years	TBD	TBD	TBD	TBD	DCLB	Dorothy Fortuny	Competitive	Angell Jacobs	Proposals are under review
15-R-024	TBD	Mobile Vendor	TBD	Base 1yr + 4, 1 yr.	TBD	\$ 250,000.00	\$ 250,000.00	\$ 250,000.00	DCLB	Carla Roane	Competitive	Gwen Washington	
15-R-025	TBD	Retail Recruitment	TBD	Base 1yr + 4, 1 yr.	TBD	\$ 100,000.00	\$ 100,000.00	\$ 100,000.00	DCLB	Carla Roane	Competitive	Gwen Washington	

14. Please identify all electronic databases maintained by your agency, including the following:
- A detailed description of the information tracked within each system;
 - The age of the system and any discussion of substantial upgrades that have been made or are planned to the system; and
 - Whether the public can be granted access to all or part of each system.

Please see attachment 8

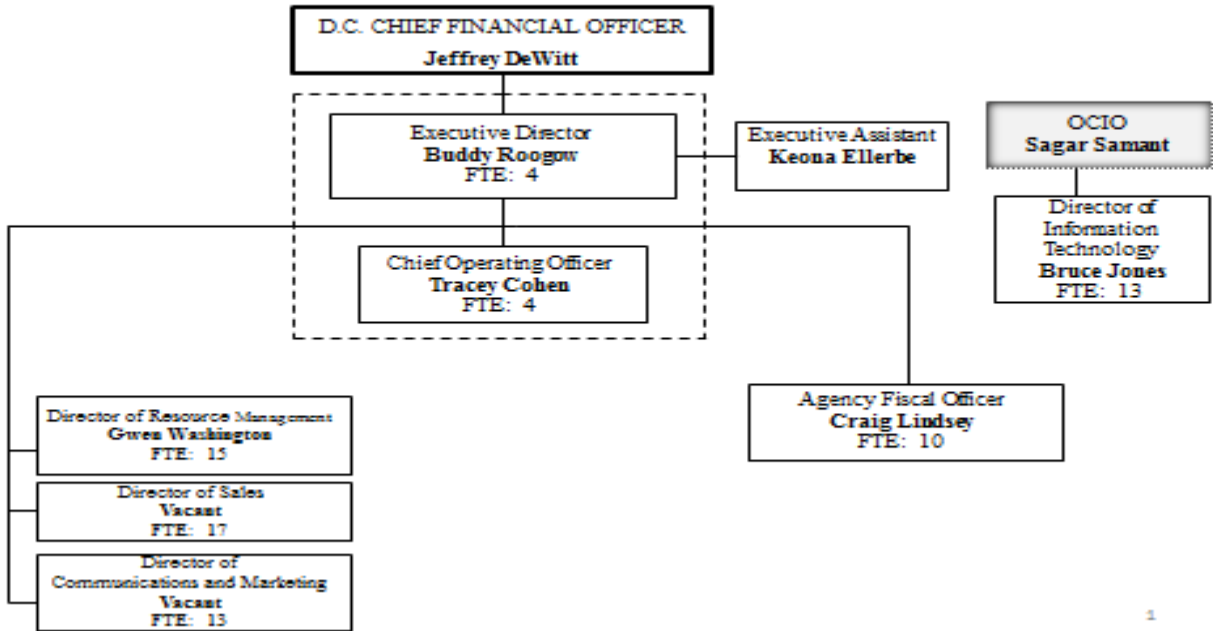
15. Please provide a copy of any updates to DC Lottery rules and regulations, and provide a brief description of the nature of the update.

Please see attachment 9

16. What has the agency done in the past year to make the activities of the agency more transparent to the public? In addition, please identify ways in which the activities of the agency and information retained by the agency could be made more transparent.

DCLB always tries to be transparent with our operation. We continue to invite the public to view our daily lottery drawings. We also rebroadcast our draw numbers via TV and radio daily and post the draws to the website within 30 minutes of the actual drawing. At our Union Station and Verizon Center locations, we have money machine events where players can get the opportunity to play for a chance to win up to \$10 thousand. We are on sight with our draw team and auditors each time we have a money machine event. The second chance draw is witnessed live by our Players to elevate the excitement and to show the integrity of our process. We update and post daily, via our website, prizes remaining for all our instant tickets. As a result, players can see what prizes are still available to be won. DCLB also produces and uploads our annual report. In addition, as a positive element of communication we always publish the names and faces of our many happy winners. This technique illustrates that the lottery is both credible and winnable.

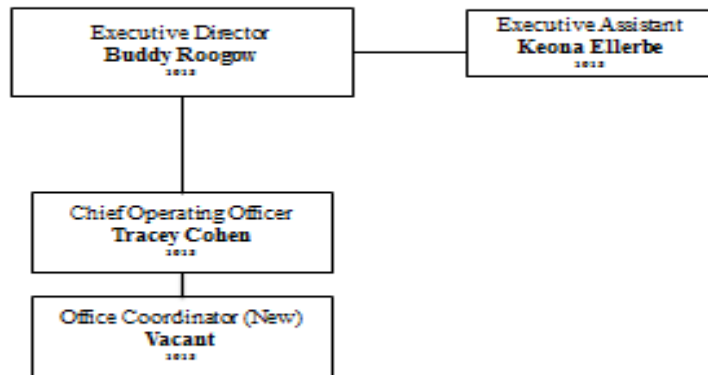
FY 2015 Budgeted Positions
Total FTEs: 76



1



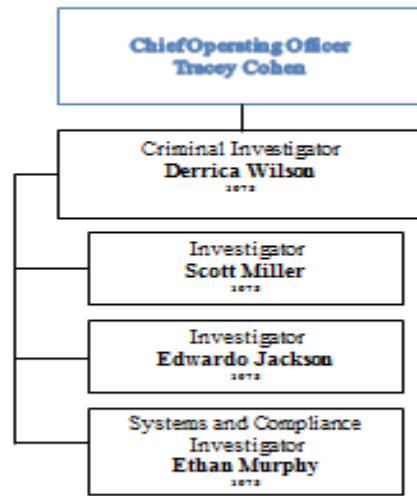
Office of Executive Direction



FTE: 4

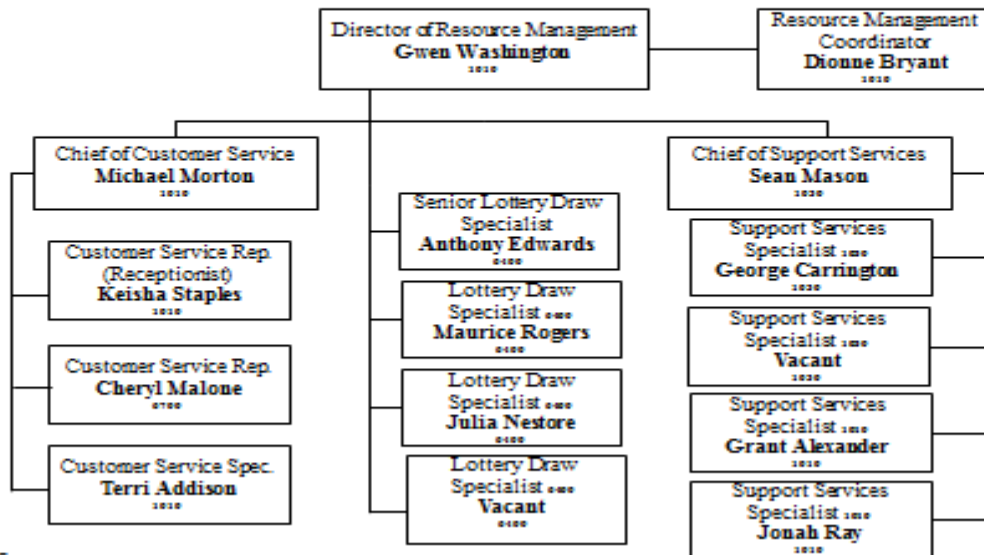
2

Security Department



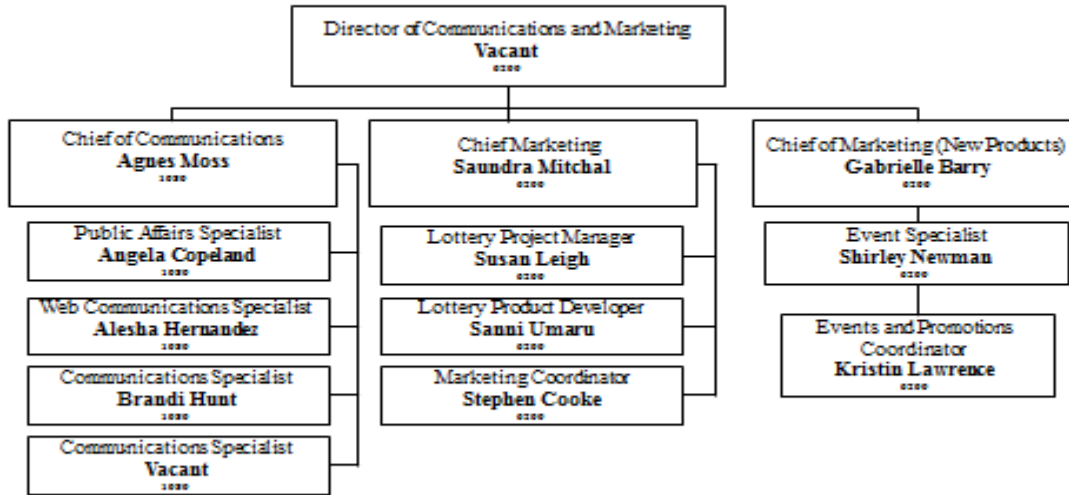
FTE: 4

Office of Resources Management



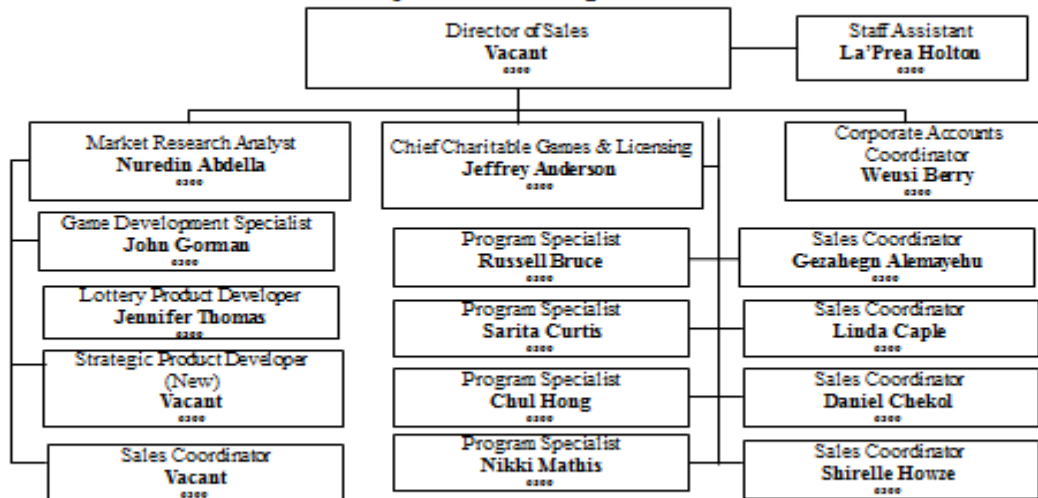
FTE: 15

Communications and Marketing



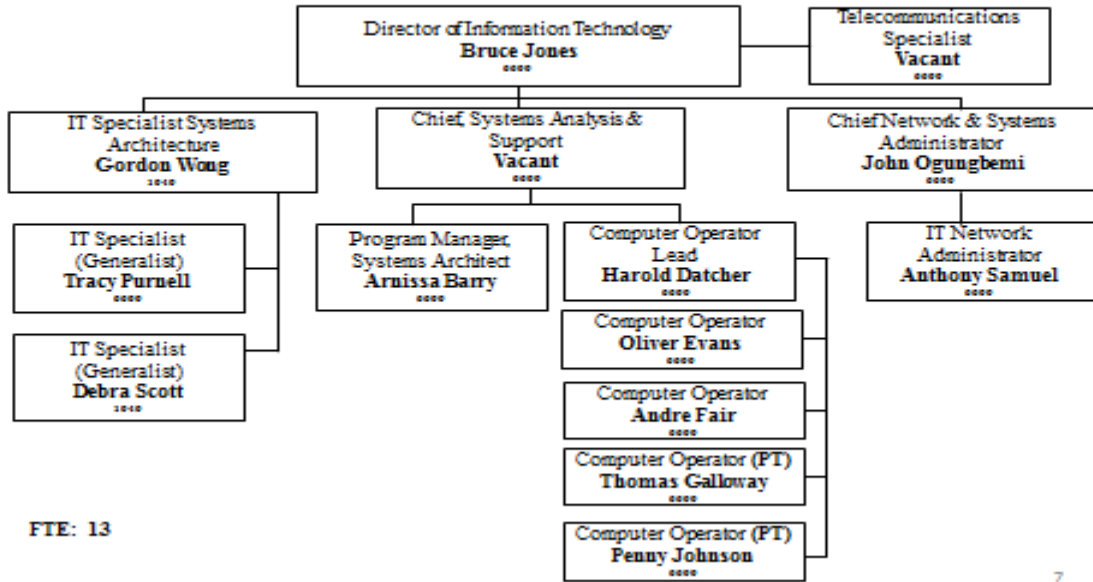
FTE: 13

Trade Development, Licensing and Charitable Games



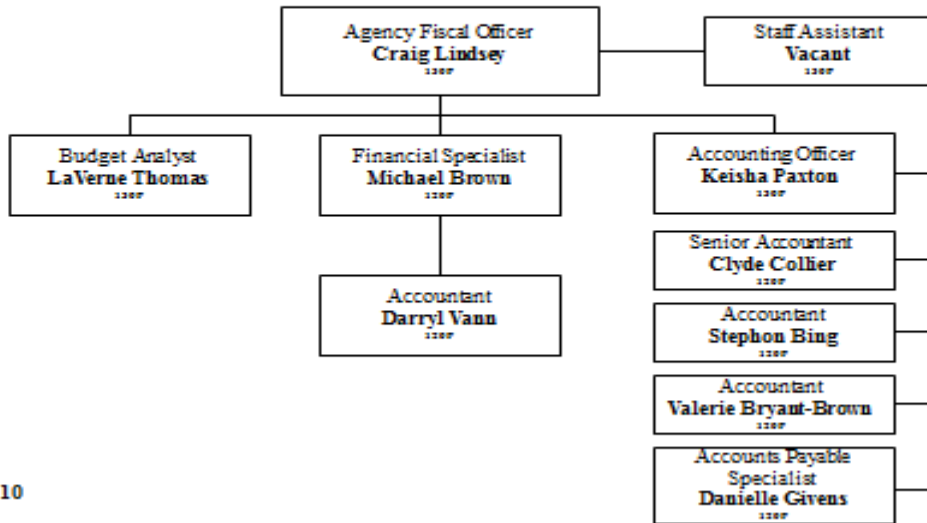
FTE: 17

Information Technology



7

Agency Financial Operations



8

DC Lottery and Charitable Games Control Board

Schedule-A

FY 2015

Position Number	Title	Name	Employee ID	Vacant/Filled Status	Grade	Step	Salary	Fund Code	Program Code	Program Name	Index	PCA	Activity	F/P Time	Head Count	FTE	CBU	SERV CD	SCHED ID
00024911	Dir Resources Management	Washington,Gwendolyn	00017416	F	15	4	125,682	6206	1000	Agency Management Program	91010	10110	1010	F	1	1	CFO	A01	A01
00032496	Chief Of Customer Service	Morton,Michael	00033519	F	13	7	98,521	6206	1000	Agency Management Program	91010	10110	1010	F	1	1	CFO	A01	A01
00051421	Customer Service Specialist	Addison,Terri D	00006715	F	11	5	65,412	6206	1000	Agency Management Program	91010	10110	1010	F	1	1	CFO	A01	A01
00065336	Customer Service Specialist	Staples,Keisha Nichelle	00056673	F	11	2	59,822	6206	1000	Agency Management Program	91010	10110	1010	F	1	1	CFO	A01	A01
00077962	Support Services Specialist	Alexander,Grant	00066012	F	11	3	61,686	6206	1000	Agency Management Program	91010	10110	1010	F	1	1	CFO	A01	A01
00077963	Support Services Specialist	Ray,Jonah T	00078120	F	11	1	57,959	6206	1000	Agency Management Program	91010	10110	1010	F	1	1	CFO	A01	A01
00078181	Resource Management Coordinator	Bryant,Dionne	00037786	F	12	2	73,943	6206	1000	Agency Management Program	91010	10110	1010	F	1	1	CFO	A01	A01
00002973	Chief Operating Officer	Cohen,Tracey Hope	00060531	F	16	4	150,089	6206	1000	Agency Management Program	91015	10115	1015	F	1	1	CFO	A01	A01
00033387	Executive Assistant	Ellerbe,Keona	00036044	F	13	5	93,223	6206	1000	Agency Management Program	91015	10115	1015	F	1	1	CFO	A01	A01
00070909	Executive Director	Roogow,Buddy W	00060073	F	17	0	199,704	6206	1000	Agency Management Program	91015	10115	1015	F	1	1	CFO	A01	A01
00009178	Office Coordinator	Vacant		V	12	1	68,961	6206	1000	Agency Management Program	91015	10115	1015	F	0	1	CFO	A01	A01
00007286	Chief Of Support Services	Mason,Sean	00038398	F	12	5	80,620	6206	1000	Agency Management Program	91030	10130	1030	F	1	1	CFO	A01	A01
00026968	Support Services Specialist	Vacant		V	11	1	57,959	6206	1000	Agency Management Program	91030	10130	1030	F	0	1	CFO	A01	A01
00035056	Support Services Specialist	Carrington,George W	00007387	F	11	10	74,729	6206	1000	Agency Management Program	91030	10130	1030	F	1	1	CFO	A01	A01
00005466	It Specialist Systems Architecture	Wong,Gordon	00056142	F	14	10	125,818	6206	1000	Agency Management Program	91040	10140	1040	F	1	1	CFO	A01	A01

DC Lottery and Charitable Games Control Board

Schedule-A

FY 2015

Position Number	Title	Name	Employee ID	Vacant/Filled Status	Grade	Step	Salary	Fund Code	Program Code	Program Name	Index	PCA	Activity	F/P Time	Head Count	FTE	CBU	SERV CD	SCHED ID
00051221	IT Specialist (Generalist)	Scott, Debra C	00028304	F	12	5	80,620	6206	1000	Agency Management Program	91040	10140	1040	F	1	1	CFO	A01	A01
00051129	Investigator	Jackson, Edwardo	00069489	F	11	5	65,412	6206	1000	Agency Management Program	91075	10175	1075	F	1	1	CFO	A01	A01
00051132	Investigator	Miller, Scott A	00056305	F	12	7	85,072	6206	1000	Agency Management Program	91075	10175	1075	F	1	1	CFO	A01	A01
00074966	Criminal Investigator	Wilson, Derrica N	00060818	F	13	4	90,574	6206	1000	Agency Management Program	91075	10175	1075	F	1	1	CFO	A01	A01
00083565	Systems And Compliance Investigator	Murphy, Ethan M	00081216	F	11	6	67,275	6206	1000	Agency Management Program	91075	10175	1075	F	1	1	CFO	A01	A01
00000176	Chief Of Communications	Moss, Agnes	00054913	F	14	2	100,784	6206	1000	Agency Management Program	91080	10180	1080	F	1	1	CFO	A01	A01
00032709	Communications Specialist	Vacant		V	12	1	71,717	6206	1000	Agency Management Program	91080	10180	1080	F	0	1	CFO	A01	A01
00068380	Web Communications Specialist	Hernandez, Alesha M.	00029748	F	13	1	82,627	6206	1000	Agency Management Program	91080	10180	1080	F	1	1	CFO	A01	A01
00077556	Communications Specialist	Hunt, Brandi	00071279	F	12	2	73,943	6206	1000	Agency Management Program	91080	10180	1080	F	1	1	CFO	A01	A01
00078336	Public Affairs Specialist	Copeland, Angela M.	00038912	F	13	6	95,872	6206	1000	Agency Management Program	91080	10180	1080	F	1	1	CFO	A01	A01
							2,208,024		1000 Total						22	25			
00001521	Director, Communications & Marketing	Vacant		V	15	1	114,677	6206	6000	Gaming Operations: Program	96200	10620	6200	F	0	1	CFO	A01	A01
00035424	Lottery Product Developer	Umaru, Sanni A	00081178	F	12	5	80,620	6206	6000	Gaming Operations: Program	96200	10620	6200	F	1	1	CFO	A01	A01
00035692	Lottery Product Manager	Leigh, Susan M	00028458	F	13	6	95,872	6206	6000	Gaming Operations: Program	96200	10620	6200	F	1	1	CFO	A01	A01
00036069	Chief Of Marketing	Mitchal, Sandra	00028689	F	14	10	125,818	6206	6000	Gaming Operations: Program	96200	10620	6200	F	1	1	CFO	A01	A01

DC Lottery and Charitable Games Control Board

Schedule-A

FY 2015

Position Number	Title	Name	Employee ID	Vacant/ Filled Status	Grade	Step	Salary	Fund Code	Program Code	Program Name	Index	PCA	Activity	F/P Time	Head Count	FTE	CBU	SERV CD	SCHED ID
00073651	Chief Of Marketing (New Products)	Barry, Gabrielle Dominique	00065353	F	14	10	125,818	6206	6000	Gaming Operations Program	96200	10620	6200	F	1	1	CFO	A01	A01
00075154	Events Specialist	Newman, Shirley	00028164	F	13	4	90,574	6206	6000	Gaming Operations Program	96200	10620	6200	F	1	1	CFO	A01	A01
00077447	Marketing Coordinator	Cooke II, Stephen A	00067162	F	12	1	71,717	6206	6000	Gaming Operations Program	96200	10620	6200	F	1	1	CFO	A01	A01
00085516	Events And Promotions Coordinator	Lawrence, Kristin K	00079308	F	11	4	63,549	6206	6000	Gaming Operations Program	96200	10620	6200	F	1	1	CFO	A01	A01
00002108	Market Research Analyst	Abdella, Nuredin	00039072	F	12	4	78,394	6206	6000	Gaming Operations Program	96300	10630	6300	F	1	1	CFO	A01	A01
00004615	Director Of Sales	Vacant		V	15	0	131,182	6206	6000	Gaming Operations Program	96300	10630	6300	F	0	1	CFO	A01	A01
00035618	Staff Assistant	Holton, La Prea R.	00035139	F	11	4	63,549	6206	6000	Gaming Operations Program	96300	10630	6300	F	1	1	CFO	A01	A01
00051135	Sales Coordinator	Vacant		V	9	1	48,108	6206	6000	Gaming Operations Program	96300	10630	6300	F	0	1	CFO	A01	A01
00099179	Strategic Product Developer	Vacant		V	14	1	93,900	6206	6000	Gaming Operations Program	96300	10630	6300	F	0	1	CFO	A01	A01
00051216	Sales Coordinator	Howze, Shirelle	00038767	F	12	4	78,394	6206	6000	Gaming Operations Program	96300	10630	6300	F	1	1	CFO	A01	A01
00051218	Sales Coordinator	Alemayehu, Gezahegn Hailu	00079410	F	11	1	57,959	6206	6000	Gaming Operations Program	96300	10630	6300	F	1	1	CFO	A01	A01
00051220	Sales Coordinator	Chekol, Daniel Melaku	00079409	F	11	1	57,959	6206	6000	Gaming Operations Program	96300	10630	6300	F	1	1	CFO	A01	A01
00065481	Lottery Product Developer	Thomas, Jennifer B	00057626	F	12	10	91,749	6206	6000	Gaming Operations Program	96300	10630	6300	F	1	1	CFO	A01	A01
00073579	Sales Coordinator	Caple, Linda M	00064759	F	12	2	73,943	6206	6000	Gaming Operations Program	96300	10630	6300	F	1	1	CFO	A01	A01
00073584	Game Development Specialist	Gorman, John B	00002051	F	14	5	110,172	6206	6000	Gaming Operations Program	96300	10630	6300	F	1	1	CFO	A01	A01

DC Lottery and Charitable Games Control Board

Schedule-A

FY 2015

Position Number	Title	Name	Employee ID	Vacant/Filled Status	Grade	Step	Salary	Fund Code	Program Code	Program Name	Index	PCA	Activity	F/P Time	Head Count	FTE	CBU	SERV CD	SCHED ID
00074849	Corporate Accounts Coordinator	Berry, Weusi K.	00066397	F	12	10	91,749	6206	6000	Gaming Operations Program	96300	10630	6300	F	1	1	CFO	A01	A01
00018583	Lottery Draw Specialist	Nestore, Julia L.	00018726	F	11	10	74,729	6206	6000	Gaming Operations Program	96400	10640	6400	F	1	1	CFO	A01	A01
00019757	Lottery Draw Specialist	Vacant		V	11	3	61,686	6206	6000	Gaming Operations Program	96400	10640	6400	F	0	1	CFO	A01	A01
00028511	Lottery Draw Specialist	Rogers, Maurice A.	00021454	F	9	1	24,054	6206	6000	Gaming Operations Program	96400	10640	6400	P	1	1	CFO	A01	A01
00035382	Senior Draw Specialist	Edwards, Anthony L.	00031968	F	12	2	73,943	6206	6000	Gaming Operations Program	96400	10640	6400	F	1	1	CFO	A01	A01
00017085	Chief Charitable Games & License	Anderson, Jeffrey R.	00017206	F	14	10	125,818	6206	6000	Gaming Operations Program	96500	10650	6500	F	1	1	CFO	A01	A01
00051133	Program Specialist	Curtis, Sarita Julia	00021163	F	12	5	80,620	6206	6000	Gaming Operations Program	96500	10650	6500	F	1	1	CFO	A01	A01
00051134	Program Specialist	Bruce, Russell	00035702	F	12	10	91,749	6206	6000	Gaming Operations Program	96500	10650	6500	F	1	1	CFO	A01	A01
00051136	Program Specialist	Hong, Chul	00006925	F	12	7	85,072	6206	6000	Gaming Operations Program	96500	10650	6500	F	1	1	CFO	A01	A01
00071885	Program Specialist	Mathis, Nikki	00061624	F	12	3	76,169	6206	6000	Gaming Operations Program	96500	10650	6500	F	1	1	CFO	A01	A01
00007959	Telecommunications Specialist	Vacant		V	14	1	97,655	6206	6000	Gaming Operations Program	96600	10660	6600	F	0	1	CFO	A01	A01
00013399	Computer Operator	Galloway, Thomas W.	00016488	F	8	5	49,308	6206	6000	Gaming Operations Program	96600	10660	6600	P	1	0.5	CFO	A01	A01
00014216	Chief Network & Systems Administrator	Ogungbemi, Jubril John	00014331	F	14	10	125,818	6206	6000	Gaming Operations Program	96600	10660	6600	F	1	1	CFO	A01	A01
00021655	Computer Operator	Fair, Andre L.	00043766	F	8	5	49,308	6206	6000	Gaming Operations Program	96600	10660	6600	F	1	1	CFO	A01	A01
00028513	Computer Operator	Evans, Oliver	00055625	F	8	10	56,276	6206	6000	Gaming Operations Program	96600	10660	6600	F	1	1	CFO	A01	A01

DC Lottery and Charitable Games Control Board

Schedule-A

FY 2015

Position Number	Title	Name	Employee ID	Vacant/Filled Status	Grade	Step	Salary	Fund Code	Program Code	Program Name	Index	PCA	Activity	F/P Time	Head Count	FTE	CBU	SERV CD	SCHED ID
00032785	Info Tech Network Administrator	Sammel,Anthony	00005635	F	14	7	116,430	6206	6000	Gaming Operations Program	96600	10660	6600	F	1	1	CFO	A01	A01
00032798	Program Manager, Systems Architect	Berry,Amissa Roshelle	00084369	F	14	3	103,914	6206	6000	Gaming Operations Program	96600	10660	6600	F	1	1	CFO	A01	A01
00034077	Director Information Technology	Jones,Bruce L	00030296	F	15	6	133,016	6206	6000	Gaming Operations Program	96600	10660	6600	F	1	1	CFO	A01	A01
00035047	Computer Operator Lead	Datcher,Harold C	00021802	F	9	7	57,329	6206	6000	Gaming Operations Program	96600	10660	6600	F	1	1	CFO	A01	A01
00035423	Chief, Systems Analysis And Supervisor	Vacant		V	14	7	116,430	6206	6000	Gaming Operations Program	96600	10660	6600	F	0	1	CFO	A01	A01
00036296	It Specialist (Generalist)	Pumell,Tracy D	00022571	F	12	3	76,169	6206	6000	Gaming Operations Program	96600	10660	6600	F	1	1	CFO	A01	A01
00036625	Computer Operator	Johnson,Penny	00072521	F	8	10	56,276	6206	6000	Gaming Operations Program	96600	10660	6600	P	1	0.5	CFO	A01	A01
00026689	Customer Service Specialist	Malone,Cheryl S	00026866	F	11	5	65,412	6206	6000	Gaming Operations Program	96700	10670	6700	F	1	1	CFO	A01	A01
							3,542,884		6000 Total	Gaming Operations Program					35	41			
00003330	Financial Specialist	Brown,Michael A	00017194	F	13	10	106,469	6206	100F	Agency Financial Operations	9120F	1120F	120F	F	1	1	CFO	A01	A01
00016813	Accountant	Vann,Darryl	00063671	F	12	3	76,169	6206	100F	Agency Financial Operations	9120F	1120F	120F	F	1	1	CFO	A01	A01
00018642	Accountant	Bryant Brown,Valerie C	00018784	F	12	8	87,298	6206	100F	Agency Financial Operations	9120F	1120F	120F	F	1	1	CFO	A01	A01
00035223	Senior Accountant	Collier,Clyde	00073096	F	13	2	85,276	6206	100F	Agency Financial Operations	9120F	1120F	120F	F	1	1	CFO	A01	A01
00035524	Accounts Payable Technician	Givens,Danielle Amearther	00062409	F	9	5	54,255	6206	100F	Agency Financial Operations	9120F	1120F	120F	F	1	1	CFO	A01	A01
00035525	Accountant	Bing,Stephon	00003038	F	12	7	85,072	6206	100F	Agency Financial Operations	9120F	1120F	120F	F	1	1	CFO	A01	A01

DC Lottery and Charitable Games Control Board

Schedule-A

FY 2015

Position Number	Title	Name	Employee ID	Vacant/Filled Status	Grade	Step	Salary	Fund Code	Program Code	Program Name	Index	PCA	Activity	F/P Time	Head Count	FTE	CBU	SERV CD	SCHED ID	
00008419	Agency Fiscal Officer	Lindsey,Craig	00071554	F	15	8	140,352	6206	100F	Agency Financial Operations	9130F	1130F	130F	F	1	1	CFO	A01	A01	
00034092	Budget Analyst	Thomas,Laverne H	00016679	F	12	10	91,749	6206	100F	Agency Financial Operations	9130F	1130F	130F	F	1	1	CFO	A01	A01	
00035225	Staff Assistant	Vacant		V	11	6	67,275	6206	100F	Agency Financial Operations	9130F	1130F	130F	F	0	1	CFO	A01	A01	
00035379	Accounting Officer	Paxton,Keisha	00008955	F	14	4	107,043	6206	100F	Agency Financial Operations	9130F	1130F	130F	F	1	1	CFO	A01	A01	
									100F											
							900,958	Total	Agency Financial Operations					9	10					
									Grand Total	DCLB					66	76				
							6,651,866													

ID	Last Name	First Name	Device Description
2022512759	Alexander	Grant	Blackberry Z10
2023206519	Anderson	Jeffrey	Blackberry Torch 9810
2022887471	Barry	Gabrielle	Pantech Discover - Android 4.1
2022628171	Bennett	ridgely	IPHONE 4
2022530856	Bennett	Ridgely	Ipad - Apple tablet
2022622744	Berry	Weusi	Blackberry Torch 9810
2022974539	Bing	Stephon	Pantech Discover - Android 4.1
2022589061	Bruce	Russell	Blackberry Torch 9810
2022865988	Bryant	Dionne	Blackberry Z10
2023456763	Caple	Linda	Blackberry Torch 9800
2022943387	Chekel	Daniel	Pantech Discover - Android 4.1
2022539409	Cohen	Tracey	Ipad - Apple tablet
2024129610	Cohen	Tracey	iPhone 5
2022976120	Cooke	Stephen	Blackberry Torch 9810
2026790751	Copeland	Angela	Blackberry Z10 - Blackberry Z10
2023302258	Datcher	Harold	BLACKBERRY CURVE 8300
2022627929	Edwards	Anthony	Blackberry Z10
2022941082	Elion	Mark	Pantech Discover - Android 4.1
2022623419	Ellerbe	Keona	Pantech Discover - Android 4.1
2022538304	Ellerbe	Keona	Ipad - Apple tablet
2022943984	Evans	Oliver	Pantech Discover - Android 4.1
2026746828	Fair	Andre	Pantech Discover - Android 4.1
2022943134	Gezahegn	Alemayehu	Pantech Discover - Android 4.1
2026158736	Holton	Leprea	Blackberry Z10
2023206527	Hong	Chul	Blackberry Torch 9800
2022150973	Howze	Shirelle	Blackberry Torch 9810
2027468496	Hunt	Brandi	Pantech Discover - Android 4.1
2022970237	Jackson	Edwardo	Blackberry Z10
2022576102	Johnson	Kevin	iPhone 5
2023158738	Johnson	Antar	BLACKBERRY CURVE 8310
2022576097	Jones	Alesha	iPhone 5
2022885640	Lawrence	Kristin	Pantech Discover - Android 4.1
2023511132	Leigh	Susan	Blackberry Torch 9800
2023456764	Lindsey	Craig	Pantech Discover - Android 4.1
2022512193	Malone	Cheryl	Blackberry Torch 9810
2022860604	Mason	Sean	Blackberry Torch 9810
2022942173	Mathis	Nikki	Blackberry Torch 9810
2023206535	Miller	Scott	Pantech Discover - Android 4.1
2028121912	Miller	Scott (Guards)	IPHONE - apple iphone 3g
2029579552	Mitchal	Saundra	IPHONE 4
2022309527	Moss	Agnes	iPhone 5
2027680715	Moss	Agnes	Ipad - Apple tablet
2026748097	Murphy	Ethan	Pantech Discover - Android 4.1
2024126671	Newman	Shirley	Blackberry Torch 9800
2022576207	Ogungbemi	John	iPhone 5
2026158750	Paxton	Keisha	Pantech Discover - Android 4.1
2028122024	Purnell	Tracy	Blackberry Z10
2026158715	Ray	Jonah	Pantech Discover - Android 4.1
2024129721	Roogow	Buddy	iPhone 5 - iPhone 5
2022580799	Samuel	Anthony	Pantech Discover - Android 4.1
2023759943	Washington	Gwen	iPhone 5
2022860605	Wilson	Derrica	Blackberry Z10
2022623824	Wong	Gordon	IPHONE 4

DC Lottery and Charitable Games Control Board									
FY2015					FY2015				
# Of Vehicles	Vehicle Tag #	Vehicle Model	Year	Dept.	Assigned Driver	Vehicle Tag #	Inspection Expiration Date		
1	DC 0795	Dodge Caravan	2010	Sales	D. Chekol	0795	October 23, 2015		
2	DC 0796	Dodge Caravan	2010	Support Service	Multi	0796	October 29, 2015		
3	DC 7915	Dodge Caravan	2010	Sales	S. Howes	7915	November 6, 2015		
4	DC 7916	Dodge Caravan	2010	Sales	L. Caples	7916	October 23, 2015		
5	DC 8151	Dodge Ram Cargo	2012	Sales	W. Berry	8151	February 1, 2016		
6	DC 8436	Dodge Caravan	2012	Security	Multi	8436	November 1, 2015		
7	DC 8437	Dodge Caravan	2012	Support Service	Multi	8437	November 1, 2015		
8	DC 8529	Dodge Ram Cargo	2012	Sales	N. Mathis	8529	February 1, 2016		
9	DC 8530	Dodge Ram Cargo	2012	Sales	A. Gazehegn (Alex)	8530	February 1, 2016		
10	DC 9437	Dodge Caravan	2013	Support Service	Multi	9437	December 1, 2017		
11	DC 9438	Dodge Caravan	2013	Sales	C. Hong	9438	December 1, 2017		
12	DC 9439	Dodge Caravan	2013	Support Service	Multi	9439	December 1, 2017		
13	DC 9440	Dodge Caravan	2013	Sales	J. Hicks	9440	December 1, 2017		
14	DC 9445	Dodge Caravan	2013	Sales	R. Bruce	9445	December 1, 2017		
15	DC 9521	Utilimaster LLM	2013	Sales	Multi	9521	October 1, 2016		

Employee Name	Employee Title	Conference	Travel Destination	Travel Date	Travel Date
Ridgely Bennett	Chief Counsel	PGRI	Salisbury Hotel	03/31/14-04/02/14	\$660.96
Mike Brown	Financial Specialist	NASPL Professional Development	US Airways	07/21/14-07/25/14	\$617.45
Tracey Cohen	Executive Office	NASPL 2013	Providence, RI	10/01/13-10/04/13	\$899.48
Tracey Cohen	Executive Office	PGRI	Salisbury Hotel	03/31/14-04/02/14	\$622.96
Mark Elion	Assistant General Counsel	NASPL Professional Development	US Airways	07/21/14-07/25/14	\$342.00
Keona Ellerbe	Executive Assistant	NASPL 2013 Conference	Providence, RI	10/01/13-10/04/13	\$449.74
Danielle Givens	Accounts Payable Technician	GFOA	Minneapolis, MN	05/18/2014-05/21/14	\$1,963.41
John Gorman	Game Development Specialist	NASPL iLottery	Cleveland, OH	05/18/14-05/22/14	\$595.48
Kevin Johnson	Director, Marketing & Communications	Radio Production	Richmond, VA	10/29/2013	\$253.28
Kevin Johnson	Director, Marketing & Communications	TV Shoot	New York, NY	11/19/2013	\$325.00
Alesha Jones	Communications Specialist	NASPL Lottery Leadership	St. Louis, MO	04/06/14-04/09/14	\$1,280.84
Bruce Jones	Director, IT	NASPL 2013 Conference	Providence, RI	10/01/13-10/04/13	\$742.41
Craig Lindsey	AFO	NASPL 2013 Conference	Providence, RI	10/01/13-10/04/13	\$810.21
Craig Lindsey	AFO	Travel- NASPL	Atlantic City, NJ	09/30/14-10/03/14	\$712.30
Billy Parson	Director, Sales	NASPL 2013 Conference	Providence, RI	10/01/13-10/04/13	\$810.21
Gwen Washington	Director, Resource Management	NASPL 2014	Atlantic City, NJ	09/30/14-10/03/14	\$699.30
Derrica Wilson	Senior Investigator	NASPL- Professional Development	St. Louis, MO	04/06/14-04/09/14	\$1,154.52
				Total Travel Amount	\$6,209.79

**D.C. Lottery and Charitable Games Control Board
Overtime Report
FY 2014**

PP	PPB DT	PPE DT	PAY DT	FUND	INDEX	PCA	NAME	EMPLID	POSITION	HR111	HR133	AMT133
20	7-Sep-14	20-Sep-14	30-Sep-14	1582	96300	10630	Alemayehu,Gezahegn Hailu	79410	51218	80	8.00	259.08
Alemayehu,Gezahegn Hailu Total											8.00	259.08
22	6-Oct-13	19-Oct-13	29-Oct-13	1582	91010	10110	Alexander,Grant	66012	77962	80	2.50	67.12
24	3-Nov-13	16-Nov-13	26-Nov-13	1582	91010	10110	Alexander,Grant	66012	77962	80	2.50	67.12
26	1-Dec-13	14-Dec-13	24-Dec-13	1582	91010	10110	Alexander,Grant	66012	77962	80	2.50	67.12
2	29-Dec-13	11-Jan-14	21-Jan-14	1582	91010	10110	Alexander,Grant	66012	77962	80	6.00	161.09
Alexander,Grant Total											13.50	362.45
14	15-Jun-14	28-Jun-14	8-Jul-14	1582	96300	10630	Berry,Weusi K.	66397	74849	80	4.00	226.47
15	29-Jun-14	12-Jul-14	22-Jul-14	1582	96300	10630	Berry,Weusi K.	66397	74849	80	4.00	164.71
20	7-Sep-14	20-Sep-14	30-Sep-14	1582	96300	10630	Berry,Weusi K.	66397	74849	80	8.00	329.41
Berry,Weusi K. Total											16.00	720.59
20	7-Sep-14	20-Sep-14	30-Sep-14	1582	9120F	1120F	Brown,Michael A	17194	3330	80	8.00	382.28
Brown,Michael A Total											8.00	382.28
14	15-Jun-14	28-Jun-14	8-Jul-14	1582	96500	10650	Bruce,Russell	35702	51134	80	4.00	164.71
Bruce,Russell Total											4.00	164.71
11	4-May-14	17-May-14	27-May-14	1582	9120F	1120F	Bryant Brown,Valerie C	18784	18642	80	8.00	305.44
12	18-May-14	31-May-14	10-Jun-14	1582	9120F	1120F	Bryant Brown,Valerie C	18784	18642	80	15.00	668.15
13	1-Jun-14	14-Jun-14	24-Jun-14	1582	9120F	1120F	Bryant Brown,Valerie C	18784	18642	80	10.00	572.70
14	15-Jun-14	28-Jun-14	8-Jul-14	1582	9120F	1120F	Bryant Brown,Valerie C	18784	18642	80	11.50	505.89
15	29-Jun-14	12-Jul-14	22-Jul-14	1582	9120F	1120F	Bryant Brown,Valerie C	18784	18642	80	16.00	706.33
16	13-Jul-14	26-Jul-14	5-Aug-14	1582	9120F	1120F	Bryant Brown,Valerie C	18784	18642	80	10.00	572.70
17	27-Jul-14	9-Aug-14	19-Aug-14	1582	9120F	1120F	Bryant Brown,Valerie C	18784	18642	80	7.50	286.35
18	10-Aug-14	23-Aug-14	2-Sep-14	1582	9120F	1120F	Bryant Brown,Valerie C	18784	18642	80	2.50	95.45
19	24-Aug-14	6-Sep-14	16-Sep-14	1582	9120F	1120F	Bryant Brown,Valerie C	18784	18642	80	5.00	190.90
20	7-Sep-14	20-Sep-14	30-Sep-14	1582	9120F	1120F	Bryant Brown,Valerie C	18784	18642	80	16.50	944.96
21	21-Sep-14	4-Oct-14	14-Oct-14	6206	9120F	1120F	Bryant Brown,Valerie C	18784	18642	80	12.50	715.88
Bryant Brown,Valerie C Total											114.50	5,564.75
20	7-Sep-14	20-Sep-14	30-Sep-14	1582	91010	10110	Bryant,Dionne	37786	78181	80	8.00	398.25
Bryant,Dionne Total											8.00	398.25
14	15-Jun-14	28-Jun-14	8-Jul-14	1582	96300	10630	Chekol,Daniel Melaku	79409	51220	80	4.00	137.82
20	7-Sep-14	20-Sep-14	30-Sep-14	1582	96300	10630	Chekol,Daniel Melaku	79409	51220	80	8.00	275.65
Chekol,Daniel Melaku Total											12.00	413.47
22	6-Oct-13	19-Oct-13	29-Oct-13	1582	9120F	1120F	Collier,Clyde	73096	35223	80	2.00	74.17
23	20-Oct-13	2-Nov-13	12-Nov-13	1582	9120F	1120F	Collier,Clyde	73096	35223	80	4.00	148.34
24	3-Nov-13	16-Nov-13	26-Nov-13	1582	9120F	1120F	Collier,Clyde	73096	35223	80	6.00	222.50
25	17-Nov-13	30-Nov-13	10-Dec-13	1582	9120F	1120F	Collier,Clyde	73096	35223	80	13.00	482.10
26	1-Dec-13	14-Dec-13	24-Dec-13	1582	9120F	1120F	Collier,Clyde	73096	35223	80	7.00	259.59
1	15-Dec-13	28-Dec-13	7-Jan-14	1582	9120F	1120F	Collier,Clyde	73096	35223	80	11.00	407.92
2	29-Dec-13	11-Jan-14	21-Jan-14	1582	9120F	1120F	Collier,Clyde	73096	35223	80	9.00	333.76
3	12-Jan-14	25-Jan-14	4-Feb-14	1582	9120F	1120F	Collier,Clyde	73096	35223	80	12.00	445.01
4	26-Jan-14	8-Feb-14	18-Feb-14	1582	9120F	1120F	Collier,Clyde	73096	35223	80	7.50	278.13
5	9-Feb-14	22-Feb-14	4-Mar-14	1582	9120F	1120F	Collier,Clyde	73096	35223	80	10.00	370.84
6	23-Feb-14	8-Mar-14	18-Mar-14	1582	9120F	1120F	Collier,Clyde	73096	35223	80	15.00	556.26
7	9-Mar-14	22-Mar-14	1-Apr-14	1582	9120F	1120F	Collier,Clyde	73096	35223	80	5.00	185.42

**D.C. Lottery and Charitable Games Control Board
Overtime Report
FY 2014**

PP	PPB DT	PPE DT	PAY DT	FUND	INDEX	PCA	NAME	EMPLID	POSITION	HR111	HR133	AMT133
8	23-Mar-14	5-Apr-14	15-Apr-14	1582	9120F	1120F	Collier,Clyde	73096	35223	80	7.50	278.13
9	6-Apr-14	19-Apr-14	29-Apr-14	1582	9120F	1120F	Collier,Clyde	73096	35223	80	17.50	648.97
10	20-Apr-14	3-May-14	13-May-14	1582	9120F	1120F	Collier,Clyde	73096	35223	80	10.00	370.84
11	4-May-14	17-May-14	27-May-14	1582	9120F	1120F	Collier,Clyde	73096	35223	80	12.50	463.55
12	18-May-14	31-May-14	10-Jun-14	1582	9120F	1120F	Collier,Clyde	73096	35223	80	7.50	278.13
13	1-Jun-14	14-Jun-14	24-Jun-14	1582	9120F	1120F	Collier,Clyde	73096	35223	80	10.00	370.84
15	29-Jun-14	12-Jul-14	22-Jul-14	1582	9120F	1120F	Collier,Clyde	73096	35223	80	12.50	463.55
16	13-Jul-14	26-Jul-14	5-Aug-14	1582	9120F	1120F	Collier,Clyde	73096	35223	80	7.50	278.13
17	27-Jul-14	9-Aug-14	19-Aug-14	1582	9120F	1120F	Collier,Clyde	73096	35223	80	12.50	478.41
18	10-Aug-14	23-Aug-14	2-Sep-14	1582	9120F	1120F	Collier,Clyde	73096	35223	80	5.00	191.37
19	24-Aug-14	6-Sep-14	16-Sep-14	1582	9120F	1120F	Collier,Clyde	73096	35223	80	5.00	191.37
20	7-Sep-14	20-Sep-14	30-Sep-14	1582	9120F	1120F	Collier,Clyde	73096	35223	80	15.00	574.09
21	21-Sep-14	4-Oct-14	14-Oct-14	6206	9120F	1120F	Collier,Clyde	73096	35223	80	7.50	287.05
Collier,Clyde Total											231.50	8,638.47
14	15-Jun-14	28-Jun-14	8-Jul-14	1582	96200	10620	Cooke II,Stephen A	67162	77447	80	10.00	390.19
20	7-Sep-14	20-Sep-14	30-Sep-14	1582	96200	10620	Cooke II,Stephen A	67162	77447	80	18.00	702.34
Cooke II,Stephen A Total											28.00	1,092.53
14	15-Jun-14	28-Jun-14	8-Jul-14	1582	96500	10650	Curtis,Sarita Julia	21163	51133	80	12.00	506.57
17	27-Jul-14	9-Aug-14	19-Aug-14	1582	96500	10650	Curtis,Sarita Julia	21163	51133	80	2.00	72.37
Curtis,Sarita Julia Total											14.00	578.94
22	6-Oct-13	19-Oct-13	29-Oct-13	1582	96600	10660	Datcher,Harold C	21802	35047	80	7.00	180.12
24	3-Nov-13	16-Nov-13	26-Nov-13	1582	96600	10660	Datcher,Harold C	21802	35047	80	2.00	51.46
25	17-Nov-13	30-Nov-13	10-Dec-13	1582	96600	10660	Datcher,Harold C	21802	35047	80	5.00	128.66
26	1-Dec-13	14-Dec-13	24-Dec-13	1582	96600	10660	Datcher,Harold C	21802	35047	80	4.00	102.93
1	15-Dec-13	28-Dec-13	7-Jan-14	1582	96600	10660	Datcher,Harold C	21802	35047	80	2.00	51.46
2	29-Dec-13	11-Jan-14	21-Jan-14	1582	96600	10660	Datcher,Harold C	21802	35047	80	5.00	128.66
3	12-Jan-14	25-Jan-14	4-Feb-14	1582	96600	10660	Datcher,Harold C	21802	35047	80	11.00	308.77
4	26-Jan-14	8-Feb-14	18-Feb-14	1582	96600	10660	Datcher,Harold C	21802	35047	80	9.00	348.64
5	9-Feb-14	22-Feb-14	4-Mar-14	1582	96600	10660	Datcher,Harold C	21802	35047	80	4.00	102.93
7	9-Mar-14	22-Mar-14	1-Apr-14	1582	96600	10660	Datcher,Harold C	21802	35047	80	6.00	154.39
8	23-Mar-14	5-Apr-14	15-Apr-14	1582	96600	10660	Datcher,Harold C	21802	35047	80	5.00	192.98
9	6-Apr-14	19-Apr-14	29-Apr-14	1582	96600	10660	Datcher,Harold C	21802	35047	80	1.00	25.73
12	18-May-14	31-May-14	10-Jun-14	1582	96600	10660	Datcher,Harold C	21802	35047	80	12.00	440.64
14	15-Jun-14	28-Jun-14	8-Jul-14	1582	96600	10660	Datcher,Harold C	21802	35047	80	5.00	192.98
15	29-Jun-14	12-Jul-14	22-Jul-14	1582	96600	10660	Datcher,Harold C	21802	35047	80	2.00	51.46
17	27-Jul-14	9-Aug-14	19-Aug-14	1582	96600	10660	Datcher,Harold C	21802	35047	80	9.00	321.64
Datcher,Harold C Total											89.00	2,783.45
22	6-Oct-13	19-Oct-13	29-Oct-13	1582	96400	10640	Edwards,Anthony L	31968	35382	80	2.50	80.47
24	3-Nov-13	16-Nov-13	26-Nov-13	1582	96400	10640	Edwards,Anthony L	31968	35382	80	2.50	80.47
25	17-Nov-13	30-Nov-13	10-Dec-13	1582	96400	10640	Edwards,Anthony L	31968	35382	80	2.50	80.47
3	12-Jan-14	25-Jan-14	4-Feb-14	1582	96400	10640	Edwards,Anthony L	31968	35382	80	2.50	80.47
14	15-Jun-14	28-Jun-14	8-Jul-14	1582	96400	10640	Edwards,Anthony L	31968	35382	80	2.50	82.97
18	10-Aug-14	23-Aug-14	2-Sep-14	1582	96400	10640	Edwards,Anthony L	31968	35382	160	7.00	348.47
19	24-Aug-14	6-Sep-14	16-Sep-14	1582	96400	10640	Edwards,Anthony L	31968	35382	80	2.50	82.97
Edwards,Anthony L Total											22.00	836.29

**D.C. Lottery and Charitable Games Control Board
Overtime Report
FY 2014**

PP	PPB DT	PPE DT	PAY DT	FUND	INDEX	PCA	NAME	EMPLID	POSITION	HR111	HR133	AMT133
25	17-Nov-13	30-Nov-13	10-Dec-13	1582	96600	10660	Fair,Andre L.	43766	21655	80	3.00	86.03
26	1-Dec-13	14-Dec-13	24-Dec-13	1582	96600	10660	Fair,Andre L.	43766	21655	80	6.00	129.03
1	15-Dec-13	28-Dec-13	7-Jan-14	1582	96600	10660	Fair,Andre L.	43766	21655	80	3.00	96.77
3	12-Jan-14	25-Jan-14	4-Feb-14	1582	96600	10660	Fair,Andre L.	43766	21655	80	6.00	129.03
5	9-Feb-14	22-Feb-14	4-Mar-14	1582	96600	10660	Fair,Andre L.	43766	21655	80	6.00	129.03
10	20-Apr-14	3-May-14	13-May-14	1582	96600	10660	Fair,Andre L.	43766	21655	80	2.00	43.01
21	21-Sep-14	4-Oct-14	14-Oct-14	6206	96600	10660	Fair,Andre L.	43766	21655	80	2.00	44.26
Fair,Andre L. Total											28.00	657.16
14	15-Jun-14	28-Jun-14	8-Jul-14	1582	9120F	1120F	Givens,Danielle Arneather	62409	35524	80	10.00	365.26
20	7-Sep-14	20-Sep-14	30-Sep-14	1582	9120F	1120F	Givens,Danielle Arneather	62409	35524	80	16.00	487.03
Givens,Danielle Arneather Total											26.00	852.29
14	15-Jun-14	28-Jun-14	8-Jul-14	1582	91080	10180	Hernandez,Alesha M.	29748	68380	80	8.00	257.50
Hernandez,Alesha M. Total											8.00	257.50
14	15-Jun-14	28-Jun-14	8-Jul-14	1582	96300	10630	Holton,La'Prea R.	35139	24722	39	4.00	108.45
17	27-Jul-14	9-Aug-14	19-Aug-14	1582	96300	10630	Holton,La'Prea R.	35139	24722	80	2.00	54.22
Holton,La'Prea R. Total											6.00	162.67
14	15-Jun-14	28-Jun-14	8-Jul-14	1582	96500	10650	Hong,Chul	6925	51136	80	8.00	305.44
Hong,Chul Total											8.00	305.44
14	15-Jun-14	28-Jun-14	8-Jul-14	1582	96300	10630	Howze,Shirelle	38767	51216	80	4.00	136.74
20	7-Sep-14	20-Sep-14	30-Sep-14	1582	96300	10630	Howze,Shirelle	38767	51216	80	9.00	457.40
Howze,Shirelle Total											13.00	594.14
15	29-Jun-14	12-Jul-14	22-Jul-14	1582	91080	10180	Hunt,Brandi	71279	77556	80	4.00	128.75
Hunt,Brandi Total											4.00	128.75
25	17-Nov-13	30-Nov-13	10-Dec-13	1582	96600	10660	Johnson,Penny	72521	36625	0	17.00	643.97
Johnson,Penny Total											17.00	643.97
21	22-Sep-13	5-Oct-13	15-Oct-13	1582	96400	10640	Kenton,Mary Ann	19926	19757	80	2.50	119.97
23	20-Oct-13	2-Nov-13	12-Nov-13	1582	96400	10640	Kenton,Mary Ann	19926	19757	80	2.50	119.50
26	1-Dec-13	14-Dec-13	24-Dec-13	1582	96400	10640	Kenton,Mary Ann	19926	19757	80	2.50	79.67
3	12-Jan-14	25-Jan-14	4-Feb-14	1582	96400	10640	Kenton,Mary Ann	19926	19757	80	2.50	79.67
5	9-Feb-14	22-Feb-14	4-Mar-14	1582	96400	10640	Kenton,Mary Ann	19926	19757	80	2.50	79.67
9	6-Apr-14	19-Apr-14	29-Apr-14	1582	96400	10640	Kenton,Mary Ann	19926	19757	80	5.00	159.34
11	4-May-14	17-May-14	27-May-14	1582	96400	10640	Kenton,Mary Ann	19926	19757	80	9.00	286.81
14	15-Jun-14	28-Jun-14	8-Jul-14	1582	96400	10640	Kenton,Mary Ann	19926	19757	80	2.50	79.67
19	24-Aug-14	6-Sep-14	16-Sep-14	1582	96400	10640	Kenton,Mary Ann	19926	19757	80	2.50	79.67
Kenton,Mary Ann Total											31.50	1,083.97
14	15-Jun-14	28-Jun-14	8-Jul-14	1582	96200	10620	Lawrence,Kristin K	79308	34080	80	8.00	317.06
20	7-Sep-14	20-Sep-14	30-Sep-14	1582	96200	10620	Lawrence,Kristin K	79308	34080	80	19.00	713.38
Lawrence,Kristin K Total											27.00	1,030.44
16	13-Jul-14	26-Jul-14	5-Aug-14	1582	96200	10620	Leigh,Susan M	28458	35692	80	3.00	129.09
Leigh,Susan M Total											3.00	129.09
13	1-Jun-14	14-Jun-14	24-Jun-14	1582	91030	10130	Mason,Sean	38398	7286	80	4.00	144.73
14	15-Jun-14	28-Jun-14	8-Jul-14	1582	91030	10130	Mason,Sean	38398	7286	80	8.00	434.20
15	29-Jun-14	12-Jul-14	22-Jul-14	1582	91030	10130	Mason,Sean	38398	7286	80	5.00	180.92
16	13-Jul-14	26-Jul-14	5-Aug-14	1582	91030	10130	Mason,Sean	38398	7286	80	4.00	180.92
20	7-Sep-14	20-Sep-14	30-Sep-14	1582	91030	10130	Mason,Sean	38398	7286	80	12.00	615.12

**D.C. Lottery and Charitable Games Control Board
Overtime Report
FY 2014**

PP	PPB DT	PPE DT	PAY DT	FUND	INDEX	PCA	NAME	EMPLID	POSITION	HR111	HR133	AMT133
Mason,Sean Total											33.00	1,555.89
21	22-Sep-13	5-Oct-13	15-Oct-13	1582	96400	10640	Nestore,Julia L	18726	18583	80	2.50	83.85
23	20-Oct-13	2-Nov-13	12-Nov-13	1582	96400	10640	Nestore,Julia L	18726	18583	80	3.00	100.62
25	17-Nov-13	30-Nov-13	10-Dec-13	1582	96400	10640	Nestore,Julia L	18726	18583	80	2.50	83.85
1	15-Dec-13	28-Dec-13	7-Jan-14	1582	96400	10640	Nestore,Julia L	18726	18583	80	2.50	83.85
7	9-Mar-14	22-Mar-14	1-Apr-14	1582	96400	10640	Nestore,Julia L	18726	18583	80	2.50	83.85
14	15-Jun-14	28-Jun-14	8-Jul-14	1582	96400	10640	Nestore,Julia L	18726	18583	80	4.00	134.16
Nestore,Julia L Total											17.00	570.18
14	15-Jun-14	28-Jun-14	8-Jul-14	1582	96200	10620	Newman,Shirley	28164	75154	44	9.00	355.16
15	29-Jun-14	12-Jul-14	22-Jul-14	1582	96200	10620	Newman,Shirley	28164	75154	80	6.00	236.77
Newman,Shirley Total											15.00	591.93
26	1-Dec-13	14-Dec-13	24-Dec-13	1582	9130F	1130F	Paxton,Keisha	8955	35379	80	3.00	135.70
Paxton,Keisha Total											3.00	135.70
26	1-Dec-13	14-Dec-13	24-Dec-13	1582	91010	10110	Ray,Jonah T	78120	77963	80	3.00	97.16
2	29-Dec-13	11-Jan-14	21-Jan-14	1582	91010	10110	Ray,Jonah T	78120	77963	80	5.00	161.93
5	9-Feb-14	22-Feb-14	4-Mar-14	1582	91010	10110	Ray,Jonah T	78120	77963	80	2.00	43.18
12	18-May-14	31-May-14	10-Jun-14	1582	91010	10110	Ray,Jonah T	78120	77963	80	6.00	129.54
13	1-Jun-14	14-Jun-14	24-Jun-14	1582	91010	10110	Ray,Jonah T	78120	77963	80	2.00	64.77
14	15-Jun-14	28-Jun-14	8-Jul-14	1582	91010	10110	Ray,Jonah T	78120	77963	80	2.00	64.77
15	29-Jun-14	12-Jul-14	22-Jul-14	1582	91010	10110	Ray,Jonah T	78120	77963	80	5.00	107.95
16	13-Jul-14	26-Jul-14	5-Aug-14	1582	91010	10110	Ray,Jonah T	78120	77963	80	3.00	97.16
17	27-Jul-14	9-Aug-14	19-Aug-14	1582	91010	10110	Ray,Jonah T	78120	77963	80	4.00	129.54
20	7-Sep-14	20-Sep-14	30-Sep-14	1582	91010	10110	Ray,Jonah T	78120	77963	80	20.00	647.71
Ray,Jonah T Total											52.00	1,543.71
22	6-Oct-13	19-Oct-13	29-Oct-13	1582	91040	10140	Scott,Debra C	28304	51221	80	14.00	738.88
23	20-Oct-13	2-Nov-13	12-Nov-13	1582	91040	10140	Scott,Debra C	28304	51221	80	4.00	211.11
4	26-Jan-14	8-Feb-14	18-Feb-14	1582	91040	10140	Scott,Debra C	28304	51221	80	4.00	180.92
5	9-Feb-14	22-Feb-14	4-Mar-14	1582	91040	10140	Scott,Debra C	28304	51221	80	4.00	144.73
6	23-Feb-14	8-Mar-14	18-Mar-14	1582	91040	10140	Scott,Debra C	28304	51221	80	8.00	289.46
9	6-Apr-14	19-Apr-14	29-Apr-14	1582	91040	10140	Scott,Debra C	28304	51221	80	4.00	144.73
10	20-Apr-14	3-May-14	13-May-14	1582	91040	10140	Scott,Debra C	28304	51221	80	4.00	144.73
11	4-May-14	17-May-14	27-May-14	1582	91040	10140	Scott,Debra C	28304	51221	80	4.00	144.73
12	18-May-14	31-May-14	10-Jun-14	1582	91040	10140	Scott,Debra C	28304	51221	80	4.00	144.73
17	27-Jul-14	9-Aug-14	19-Aug-14	1582	91040	10140	Scott,Debra C	28304	51221	80	4.00	217.10
20	7-Sep-14	20-Sep-14	30-Sep-14	1582	91040	10140	Scott,Debra C	28304	51221	80	12.00	633.20
21	21-Sep-14	4-Oct-14	14-Oct-14	6206	91040	10140	Scott,Debra C	28304	51221	80	4.00	144.73
Scott,Debra C Total											70.00	3,139.05
24	3-Nov-13	16-Nov-13	26-Nov-13	1582	91010	10110	Staples,Keisha Nichelle	56673	65336	80	2.00	47.32
Staples,Keisha Nichelle Total											2.00	47.32
14	15-Jun-14	28-Jun-14	8-Jul-14	1582	96300	10630	Thomas,Jennifer B	57626	65481	80	4.00	247.06
Thomas,Jennifer B Total											4.00	247.06
21	21-Sep-14	4-Oct-14	14-Oct-14	6206	96200	10620	Umaru,Sanni A	81178	35424	80	8.00	434.20
Umaru,Sanni A Total											8.00	434.20

D.C. Lottery and Charitable Games Control Board
Overtime Report
FY 2014

PP	PPB DT	PPE DT	PAY DT	FUND	INDEX	PCA	NAME	EMPLID	POSITION	HR111	HR133	AMT133
20	7-Sep-14	20-Sep-14	30-Sep-14	1582	91075	10175	Wilson,Derrica N	60818	74966	80	15.00	887.90
							Wilson,Derrica N Total				15.00	887.90
							Grand Total				959.00	37,193.62

D.C. Lottery and Charitable Games Control Board
Overtime Report
FY 2015

PP	PPB DT	PPE DT	PAY DT	AGY	AV	FUND	INDEX	PCA	NAME	EMPLID	POSITION	HR133	AMT133
22	5-Oct-14	18-Oct-14	28-Oct-14	DC0	15	6206	91010	10110	Alexander, Grant	66012	77962	5	148.28
26	30-Nov-14	13-Dec-14	23-Dec-14	DC0	15	6206	91010	10110	Alexander, Grant	66012	77962	8	355.88
Alexander, Grant Total												13	504.16
23	19-Oct-14	1-Nov-14	10-Nov-14	DC0	15	6206	9120F	1120F	Bryant Brown, Valerie C	18784	18642	25	1,216.78
24	2-Nov-14	15-Nov-14	25-Nov-14	DC0	15	6206	9120F	1120F	Bryant Brown, Valerie C	18784	18642	10	419.71
25	16-Nov-14	29-Nov-14	9-Dec-14	DC0	15	6206	9120F	1120F	Bryant Brown, Valerie C	18784	18642	12.5	566.60
26	30-Nov-14	13-Dec-14	23-Dec-14	DC0	15	6206	9120F	1120F	Bryant Brown, Valerie C	18784	18642	12.5	786.94
1	14-Dec-14	27-Dec-14	6-Jan-15	DC0	15	6206	9120F	1120F	Bryant Brown, Valerie C	18784	18642	12.5	524.63
2	28-Dec-14	10-Jan-15	20-Jan-15	DC0	15	6206	9120F	1120F	Bryant Brown, Valerie C	18784	18642	7.5	314.78
3	11-Jan-15	24-Jan-15	3-Feb-15	DC0	15	6206	9120F	1120F	Bryant Brown, Valerie C	18784	18642	15	734.48
4	25-Jan-15	7-Feb-15	17-Feb-15	DC0	15	6206	9120F	1120F	Bryant Brown, Valerie C	18784	18642	10	461.67
Bryant Brown, Valerie C Total												105	5,025.59
26	30-Nov-14	13-Dec-14	23-Dec-14	DC0	15	6206	91010	10110	Bryant, Dionne	37786	78181	16	853.19
1	14-Dec-14	27-Dec-14	6-Jan-15	DC0	15	6206	91010	10110	Bryant, Dionne	37786	78181	40	1,830.80
Bryant, Dionne Total												56	2,683.99
22	5-Oct-14	18-Oct-14	28-Oct-14	DC0	15	6206	9120F	1120F	Collier, Clyde	73096	35223	10	409.99
23	19-Oct-14	1-Nov-14	10-Nov-14	DC0	15	6206	9120F	1120F	Collier, Clyde	73096	35223	15	614.97
24	2-Nov-14	15-Nov-14	25-Nov-14	DC0	15	6206	9120F	1120F	Collier, Clyde	73096	35223	13	512.48
26	30-Nov-14	13-Dec-14	23-Dec-14	DC0	15	6206	9120F	1120F	Collier, Clyde	73096	35223	32	1,311.94
1	14-Dec-14	27-Dec-14	6-Jan-15	DC0	15	6206	9120F	1120F	Collier, Clyde	73096	35223	7	286.99
2	28-Dec-14	10-Jan-15	20-Jan-15	DC0	15	6206	9120F	1120F	Collier, Clyde	73096	35223	10	409.98
3	11-Jan-15	24-Jan-15	3-Feb-15	DC0	15	6206	9120F	1120F	Collier, Clyde	73096	35223	12.5	512.48
4	25-Jan-15	7-Feb-15	17-Feb-15	DC0	15	6206	9120F	1120F	Collier, Clyde	73096	35223	12.5	512.48
Collier, Clyde Total												111.5	4,571.31
26	30-Nov-14	13-Dec-14	23-Dec-14	DC0	15	6206	96400	10640	Edwards, Anthony L	31968	35382	18	959.84
3	11-Jan-15	24-Jan-15	3-Feb-15	DC0	15	6206	96400	10640	Edwards, Anthony L	31968	35382	2.5	88.87
Edwards, Anthony L Total												20.5	1,048.71
23	19-Oct-14	1-Nov-14	10-Nov-14	DC0	15	6206	96600	10660	Evans, Oliver	55625	28513	13	521.55
25	16-Nov-14	29-Nov-14	9-Dec-14	DC0	15	6206	96600	10660	Evans, Oliver	55625	28513	7	231.39
26	30-Nov-14	13-Dec-14	23-Dec-14	DC0	15	6206	96600	10660	Evans, Oliver	55625	28513	6	246.15
Evans, Oliver Total												26	999.09
22	5-Oct-14	18-Oct-14	28-Oct-14	DC0	15	6206	96600	10660	Fair, Andre L.	43766	21655	15	414.85
23	19-Oct-14	1-Nov-14	10-Nov-14	DC0	15	6206	96600	10660	Fair, Andre L.	43766	21655	8	284.47
24	2-Nov-14	15-Nov-14	25-Nov-14	DC0	15	6206	96600	10660	Fair, Andre L.	43766	21655	10	337.81
25	16-Nov-14	29-Nov-14	9-Dec-14	DC0	15	6206	96600	10660	Fair, Andre L.	43766	21655	16	521.52
26	30-Nov-14	13-Dec-14	23-Dec-14	DC0	15	6206	96600	10660	Fair, Andre L.	43766	21655	32	1,137.88
3	11-Jan-15	24-Jan-15	3-Feb-15	DC0	15	6206	96600	10660	Fair, Andre L.	43766	21655	2	47.41
4	25-Jan-15	7-Feb-15	17-Feb-15	DC0	15	6206	96600	10660	Fair, Andre L.	43766	21655	6	213.35
Fair, Andre L. Total												88.5	2,957.29
26	30-Nov-14	13-Dec-14	23-Dec-14	DC0	15	6206	96300	10630	Hicks, Jamal S.	14043	51135	4	138.77
1	14-Dec-14	27-Dec-14	6-Jan-15	DC0	15	6206	96300	10630	Hicks, Jamal S.	14043	51135	-4	(138.77)
Hicks, Jamal S. Total												0	-
26	30-Nov-14	13-Dec-14	23-Dec-14	DC0	15	6206	91030	10130	Mason, Sean	38398	7286	24	1,298.45
1	14-Dec-14	27-Dec-14	6-Jan-15	DC0	15	6206	91030	10130	Mason, Sean	38398	7286	40	2,015.50
Mason, Sean Total												64	3,313.95

D.C. Lottery and Charitable Games Control Board
Overtime Report
FY 2015

PP	PPB DT	PPE DT	PAY DT	AGY	AY	FUND	INDEX	PCA	NAME	EMPLID	POSITION	HR133	AMT133
23	19-Oct-14	1-Nov-14	10-Nov-14	DC0	15	6206	96400	10640	Nestore,Julia L	18726	18583	3	98.80
1	14-Dec-14	27-Dec-14	6-Jan-15	DC0	15	6206	96400	10640	Nestore,Julia L	18726	18583	5.25	188.62
Nestore,Julia L Total												8	287.42
24	2-Nov-14	15-Nov-14	25-Nov-14	DC0	15	6206	96600	10660	Ogungbemi,Jubril John	14331	14216	6	362.94
25	16-Nov-14	29-Nov-14	9-Dec-14	DC0	15	6206	96600	10660	Ogungbemi,Jubril John	14331	14216	3	181.47
26	30-Nov-14	13-Dec-14	23-Dec-14	DC0	15	6206	96600	10660	Ogungbemi,Jubril John	14331	14216	50	3,024.47
1	14-Dec-14	27-Dec-14	6-Jan-15	DC0	15	6206	96600	10660	Ogungbemi,Jubril John	14331	14216	35	2,117.13
Ogungbemi,Jubril John Total												94	5,686.01
22	5-Oct-14	18-Oct-14	28-Oct-14	DC0	15	6206	96600	10660	Purnell,Tracy D	22571	36296	12	512.68
Purnell,Tracy D Total												12	512.68
22	5-Oct-14	18-Oct-14	28-Oct-14	DC0	15	6206	91010	10110	Ray,Jonah T	78120	77963	5	119.34
23	19-Oct-14	1-Nov-14	10-Nov-14	DC0	15	6206	91010	10110	Ray,Jonah T	78120	77963	(0)	(5.97)
26	30-Nov-14	13-Dec-14	23-Dec-14	DC0	15	6206	91010	10110	Ray,Jonah T	78120	77963	17	710.56
1	14-Dec-14	27-Dec-14	6-Jan-15	DC0	15	6206	91010	10110	Ray,Jonah T	78120	77963	46	1,922.67
4	25-Jan-15	7-Feb-15	17-Feb-15	DC0	15	6206	91010	10110	Ray,Jonah T	78120	77963	5	208.99
Ray,Jonah T Total												72.75	2,955.59
24	2-Nov-14	15-Nov-14	25-Nov-14	DC0	15	6206	96600	10660	Samuel,Anthony	5635	32785	6	335.86
25	16-Nov-14	29-Nov-14	9-Dec-14	DC0	15	6206	96600	10660	Samuel,Anthony	5635	32785	23	1,287.45
26	30-Nov-14	13-Dec-14	23-Dec-14	DC0	15	6206	96600	10660	Samuel,Anthony	5635	32785	55	3,078.68
1	14-Dec-14	27-Dec-14	6-Jan-15	DC0	15	6206	96600	10660	Samuel,Anthony	5635	32785	42	2,350.99
Samuel,Anthony Total												126	7,052.98
23	19-Oct-14	1-Nov-14	10-Nov-14	DC0	15	6206	91040	10140	Scott,Debra C	28304	51221	12	562.02
24	2-Nov-14	15-Nov-14	25-Nov-14	DC0	15	6206	91040	10140	Scott,Debra C	28304	51221	16	775.20
25	16-Nov-14	29-Nov-14	9-Dec-14	DC0	15	6206	91040	10140	Scott,Debra C	28304	51221	8	310.08
26	30-Nov-14	13-Dec-14	23-Dec-14	DC0	15	6206	91040	10140	Scott,Debra C	28304	51221	20	1,007.75
1	14-Dec-14	27-Dec-14	6-Jan-15	DC0	15	6206	91040	10140	Scott,Debra C	28304	51221	12	465.12
2	28-Dec-14	10-Jan-15	20-Jan-15	DC0	15	6206	91040	10140	Scott,Debra C	28304	51221	8	310.08
3	11-Jan-15	24-Jan-15	3-Feb-15	DC0	15	6206	91040	10140	Scott,Debra C	28304	51221	16	620.16
4	25-Jan-15	7-Feb-15	17-Feb-15	DC0	15	6206	91040	10140	Scott,Debra C	28304	51221	16	620.16
Scott,Debra C Total												108	4,670.57
22	5-Oct-14	18-Oct-14	28-Oct-14	DC0	15	6206	91040	10140	Wong,Gordon	56142	5466	32	1,935.66
Wong,Gordon Total												32	1,935.66
Grand Total												937	44,205.00

Background: Timeline for Solicitations/Contracts for Instant Tickets and Related Services and Instant Ticket Manufacturing Services

RFP No. CFOPD-13-R-003 for instant tickets and related services.

- 1) On October 22, 2012, the OCFO issued RFP No. CFOPD-13-R-003 for instant tickets and related services.
- 2) On December 17, 2012, two proposals were received from the following firms:
 - Scientific Games International, Inc. (Sci Games)
 - Veterans Services Corporation and Pollard Holdings Inc, Joint Venture(VSC/PH Joint Venture)
- 3) On January 10, 2013, VSC/PH Joint Venture was deemed non-responsive in accordance with the solicitation and D.C. Official Code 2-218.46(d) for failure to submit a subcontracting plan and VSC/PH Joint Venture was notified of the determination. This determination followed the consult and evidence received from DSLBD.
- 4) On January 25, 2013, VSC/PH Joint Venture filed a protest (P-0933) with the Contract Appeals Board (CAB), prohibiting the OCFO from awarding new contract.
- 5) On March 19, 2013, the CAB granted VSC/PH Joint Venture's consent motion to dismiss the protest.
- 6) On March 21, 2013, the OCFO proceeded with the award of a short term letter contract (Contract No. CFOPD-13-L-003) to Sci Games resultant from RFP No. CFOPD-13-R-003; pursuant to Title 27 of the D.C. Municipal Regulations (DCMR) § 2425.1
- 7) On April 9, 2013, the OCFO sent to DSLBD a request for modification of CBE subcontracting requirements to be 17% for the new contract.
- 8) DSLBD denied waiver request for Letter contract CFOPD-13-L-003 on July 8, 2013.
- 9) On July 10, 2013, the DC Council disapproved the definitized contract award.

RFP No. CFOPD-13-R-030 to re-solicit for instant tickets and related services.

- 1) On July 18, 2013, the OCFO advertised RFP No. CFOPD-13-R-030 to re-solicit for instant tickets and related services.
- 2) On July 20, 2013, the short term letter Contract No. CFOPD-13-L-003 expired.
- 3) On September 10, 2013, the OCFO received one proposal from Veterans Services Corporation and Pollard Holdings, Inc., Joint Venture (VSC/PH Joint Venture).
- 4) VSC/PH is a certified business enterprise until January 23, 2015.

- 5) On December 11, 2013, DCLB advised that the proposal from VSC/PH Joint Venture is unsatisfactory to the District on the standpoint of price.
- 6) Accordingly, on December 11, 2013, the RFP was cancelled.

IFB No. CFOPD-14-I-023 for instant ticket games.

- 1) On December 18, 2013, the OCFO submitted to DSLBD a pre-solicitation waiver request for a bid solicitation to purchase instant tickets from ticket manufacturers due to the following requirement: that the Contractor shall have at least one current North American client to whom it supplies lottery instant tickets comparable to those specified in this Contract; and the Contractor shall be the direct manufacture of the instant tickets it offers to ensure quality control and security of the games.
- 2) On February 21, 2014, the DSLBD's approved a waiver for the Instant Ticket games IFB.
- 3) On April 28, 2014, the OCFO issued IFB No. CFOPD-14-I-023 for instant ticket games with a due date of May 12, 2014.
- 4) The IFB deadline was extended to May 21, 2014. It was extended again to May 29, 2014.
- 5) On May 29, 2014, four proposals were received from the following firms:
 - Metropolitan Gaming
 - GTECH
 - Pollard Banknote Limited
 - Scientific Games International
- 6) On May 29, 2014, the OCFO received a notice of protest from Metropolitan Gaming filed under CAB No. P-0967.
- 7) On May 29, 2014, the IFB bid opening was extended to June 9, 2014.
- 8) On August 22, 2014 the IFB was cancelled.
- 9) On August 27, 2014, Determination and Findings to Cancel IFB filed with the CAB.

Exempt from Competition Contracts CFOPD-14-C-069, CFOPD-14-C-069A, and CFOPD-14-C-069B for instant ticket manufacturing services.

- 1) On August 26, 2014, the OCFO submitted to DSLBD a waiver request for three exempt from competition contracts for instant ticket manufacturing services. The basis for the waiver was that the contractor be the direct manufacturer of instant tickets to ensure quality control and security of the games. The manufacture of instant tickets must own the printing presses and other printing technologies to meet the contract requirements of providing printing options and precise color, text, and artwork for each game. Printing presses and other printing technologies are proprietary and confidential to the manufacturers.
- 2) On October 29, 2014, DSLBD denied the waiver request.

Exempt from Competition Contracts CFOPD-15-C-014 and CFOPD-15-C-014B for instant ticket manufacturing services.

- 1) On November 7, 2014, the OCFO submitted to DSLBD a waiver request for three exempt from competition contracts for instant ticket manufacturing services. The basis for the waiver was that the contractor be the direct manufacturer of instant tickets to ensure quality control and security of the games. The manufacture of instant tickets must own the printing presses and other printing technologies to meet the contract requirements of providing printing options and precise color, text, and artwork for each game. Printing presses and other printing technologies are proprietary and confidential to the manufacturers.
- 2) On December 1, 2014, the DSLBD approved the waiver based on the determination that related services would be acquired under separate CBE contracts.
- 3) On December 2, 2014, CFOPD-15-C-014 was issued to GTECH and on December 23, 2014, CFOPD-15-C-014B was issued to Scientific Games. The third exempt from competition contract is still under negotiation.
- 4) On February 13, 2015, the OCFO received a notice of protest from Metropolitan Gaming filed under CAB No. P-0_____.

Background

- In the case of instant ticket contract, only three companies in the U.S. produce instant tickets and are not located within the District. None of the companies qualifies as a CBE.
 - The three companies are Scientific Games (Georgia), Pollard Banknote (Michigan), GTECH Printing (Florida).
 - Entire production of tickets takes place outside the District, and as a result, there are a reduced amount of subcontracting opportunities associated with instant ticket contracts.

Contract#	Vendor Name	Description	Exec. Date	Term	Exp. Date	Base Value	Current Value	Cumulative Value	Major Agy	Contract Specialist	Award	COTR	Monitoring Activity	Column5	Column6
CFOPD-09-C-008	Technical Systems Testing of North America	Testing & Certification of General Draw	01/27/09	Base + 4 Years	01/26/14	51,760.00	32,350.00	194,810.00	DCLB	Anthony Stover	Competitive	Anthony Edwards	expired		
CFOPD-09-C-018	Charles Ryan Associates	Web Design and Development	10/01/08	4 Years	04/30/14	202,750.00	731,750.00	900,250.00	DCLB	Vanessa Bennett	Competitive	Victoria Holmes	contract CFOPD-14-C-027 replaced this expired contract		
CFOPD-09-C-034	F.S. Taylor & Associates	Auditing Daily Lottery Services	11/17/09	Base+4	03/16/15	\$672,000.00	\$59,560.00	\$1,555,710.00	DCLB	Anthony Stover	Competitive	Anthony Edwards	sole source; solicitation to replace is being issued		
CFOPD-10-C-038	Intralot	Lottery Gaming System	03/30/10	base + 5	03/29/15	NTE \$38,000,000	38,000,000.00	76,000,000.00	DCLB	Dorothy Whisler	Competitive	Gwen Washington	the remaining 5 years are exercised and await the 3-30-15 start date		
CFOPD-11-C-019	MDB Communciations	Advertising Services For DCLB	12/04/10	Base +4 years	12/03/15	6,000,000.00	6,464,350.00	30,811,050.00	DCLB	Anthony Stover	Competitive	Sandra Mitchal	no issues		
CFOPD-11-C-020	MS Technologies	DC Lottery (lot -line)	02/10/11	Base +4 years	02/09/15	207,988.00	112,600.00	512,388.00	DCLB	Vanessa Bennett	Competitive	John Ogungbemi	no issues		
CFOPD-11-C-036	Pollard Banknote limited Partnership	Licensed Product Distribution	03/09/11	Base + 2 (1) yr options	03/08/14	\$134,220.17	\$203,220.17	\$203,220.17	DCLB	Anthony Stover	Exempt from Competition	Billy Parson	expired		
CFOPD-11-C-054	Watkins Security	Security Services	09/30/11	4 Years	09/29/15	\$481,189.44	\$518,169.60	\$2,083,108.48	DCLB	Anthony Stover	Competitive	Scott Miller	no issues		
CFOPD-12-C-015	Scientific Games International, Inc.	Computerized Draw	02/02/12	Base+4	02/01/16	NTE \$244,776.00	\$235,000.00	\$949,776.00	DCLB	Anthony Stover	Competitive	Anthony Edwards	no issues		
CFOPD-14-C-010	Pollard Banknote limited Partnership	Pollard Playbook Instant Tickets	11/25/13	Base 1yr + 2, 1 yr	11/24/14	\$218,182.00	\$218,182.00	\$218,182.00	DCLB	Anthony Stover	Exempt from Competition	Billy Parsons	expired		
CFOPD-14-C-034	Scientific Games International, Inc.	Instant Tickets	04/24/14	Base 1yr + 2, 1yr	04/23/15	\$250,000.00	\$250,000.00	\$250,000.00	DCLB	Norman Townsel	Competition Exempt	John Gorman			
CFOPD-14-C-033	GTECH Corporation	Instant Tickets	04/22/14	Base 1yr + 2, 1yr	04/21/15	\$250,000.00	\$250,000.00	\$250,000.00	DCLB	Norman Townsel	Competition Exempt	John Gorman			
CFOPD-15-C-014B	Scientific Games International, Inc.	Instant Tickets	12/23/14	Base 1yr + 4, 1yr	12/22/15	NTE \$980,000	NTE \$980,000	NTE \$980,000	DCLB	Norman Townsel	Competition Exempt	John Gorman			
CFOPD-15-C-014	GTECH Corporation	Instant Tickets	12/02/14	Base 1yr + 4, 1yr	12/01/15	NTE \$980,000	NTE \$980,000	NTE \$980,000	DCLB	Norman Townsel	Competition Exempt	John Gorman			
		New Solicitations													
CFOPD-15-R-006	TBD	DCLB Auditing Services	TBD	Base + 4 years	TBD	\$ 185,000.00	\$ 185,000.00	\$ 185,000.00	DCLB	Anthony Stover	Competitive	Anthony Edwards	To be Issued 2nd week in Feb		
CFOPD-15-R-027	TBD	Lottery Retail Enhancement	TBD	Base + 4 years	TBD	\$ 200,000.00	\$ 200,000.00	\$ 200,000.00	DCLB	Anthony Stover	Set Aside	Gwen Washington	needs review from Progam Office		
CFOPD-15-I-022	TBD	CLB Warehouse Service	TBD	Base + 4 years	TBD	TBD	TBD	TBD	DCLB	Dorothy Fortune	Set Aside	Gwen Washington	Bids are under review; anticipate March award		
CFOPD-15-R-014	TBD	DCLB Best Practices	TBD	Base + 4 years	TBD	TBD	TBD	TBD	DCLB	Dorothy Fortune	Competitive	Angell Jacobs	Proposals are under review		
15-R-024	TBD	Mobile Vendor	TBD	Base 1yr + 4, 1 yr.	TBD	\$ 250,000.00	\$ 250,000.00	\$ 250,000.00	DCLB	Carla Roane	Competitive	Gwen Washington			
15-R-025	TBD	Retail Recruitment	TBD	Base 1yr + 4, 1 yr.	TBD	\$ 100,000.00	\$ 100,000.00	\$ 100,000.00	DCLB	Carla Roane	Competitive	Gwen Washington			

Name	Description	Age in Years	Upgrades?	Public Access?
Computerized Gaming System	Contains lottery's players wagers and validations	5 years	5 year contract	Partial public access through self-service terminals
Internal Control System	Contains sales, payments and agent commissions for verification and validation	5 years	No plans to replace	Not available to public
Interactive Voice Response	Contains winning numbers and jackpot information to public via telephone, website and SMS texts	5 years	To be replaced, last year of contract	Public access
Oracle GL	General Ledger accounting system contains revenue and expense data	12 years	Upgrade in process.	Not available to public
Agent Management	Contains lottery retailer data	5 years	No plans to replace	Partial public access provided through website
Sales Rollup - Retailer Sales Analysis	Contains lottery retailer sales and commissions, and lottery sales liability data	7 years	Plan to replace with Cognos and Sales Force Automation	Not available to public
Investigations	Contains security incident analysis and investigations data	7 years	No plans to replace	Not available to public
<u>Customer</u> Complaints	Customer Service data	7 years	No plans to replace	Not available to public
Automated Claims Processing	Contains winning ticket claims data	7 years	No plans to replace	Not available to public

TILE 30
DISTRICT OF COLUMBIA MUNICIPAL REGULATIONS
LOTTERY AND CHARITABLE GAMES CONTROL BOARD

Chapter	Title	Date of Last Amendment
2	Lottery Licenses	August 2007
3	Agent Requirements	May 2013
4	Hearings	December 2003
5	General Provisions	October 2014
6	Claims and Prize Payments	January 2010
7	Instant Games	Proposed Amendments Published in January 23, 2015 D.C. Register
8	On-Line Games	October 1993
9	Description of On-Line Games	February 2015
10	Other Games	October 1993
12	Bingo, Raffle, Monte Carlo Night Party and Suppliers' License	April 2006
13	Bingo, Raffle and Monte Carlo Night Party Personnel	May 1988
14	Bingo Operations	April 1991
15	Raffles	December 2014
16	Monte Carlo Night Parties	May 2006
17	Prohibited Acts	May 1988

*Chapter 1 (Organization of the Lottery and Charitable Games Control Board) and chapters 20-25 (relating to Lottery Board Procurements) are in the process of being repealed because they are no longer relevant to the operation of the DC Lottery