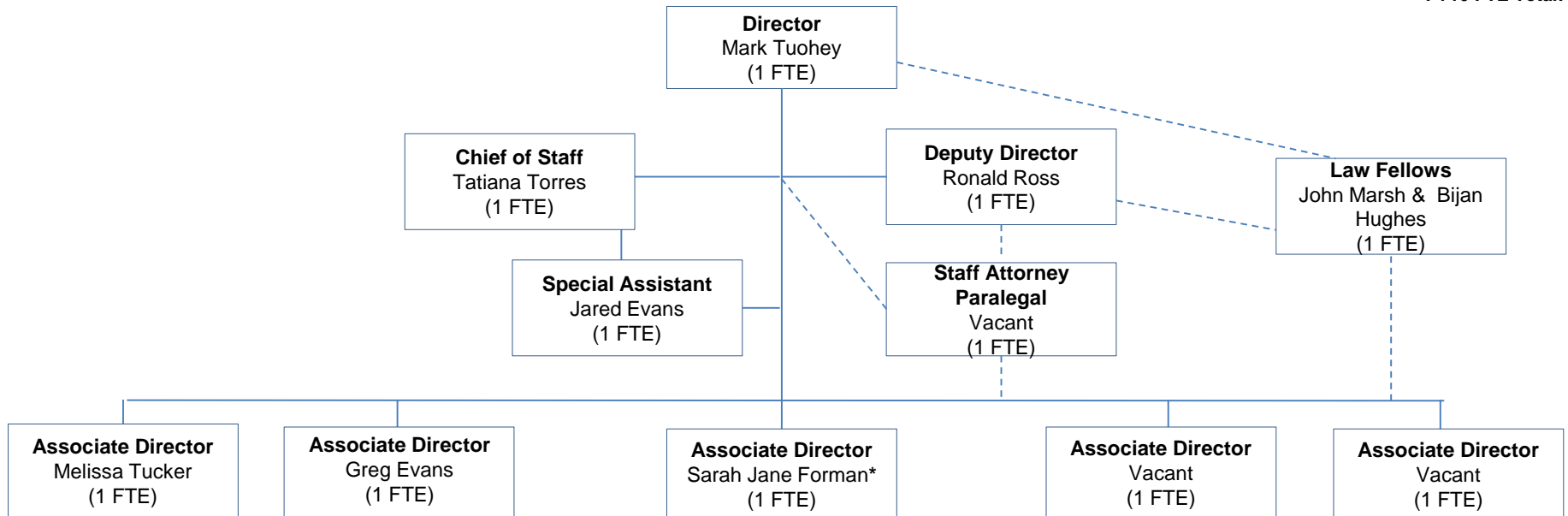




# ORGANIZATIONAL CHART

As of 2.4.2016  
 Last updated by Tatiana Torres  
 Confidential  
 FY16 FTE Total: 11



- Department of Health
- Department of Human Services
- Child and Family Services Agency
- Department of Disability Services
- Department of Behavioral Health
- Department of Youth Rehabilitation Services
- Department of HealthCare Finance
- Office on Aging
- Department of Parks and Recreation
- Office of Disability Rights

- Office of Performance Management
- Office of Innovation
- Office of Public-Private Partnerships
- Office of Labor Relations and Collective Bargaining
- Department of Human Resources
- Department of Public Works
- Department of General Services
- Office of the Chief Technology Officer
- Office of Contracting and Procurement
- Department of Motor Vehicles
- Office of Risk Management

- Metropolitan Police Department
- Fire and Emergency Medical Services Department
- Homeland Security and Emergency Management Agency
- Department of Corrections
- Department of Forensic Sciences
- Office of Unified Communications
- Office of the Chief Medical Examiner
- Justice Grants Administration:
- Office of Victim Services
- Corrections Information Council

- Department of Housing and Community Development
- Department of Consumer & Regulatory Affairs
- Department of Transportation
- Office of Planning
- Department of Employment Services
- Department of the Environment
- Department of Insurance, Securities, and Banking
- Department of Small and Local Business Development
- Office of Motion Picture and Television Development
- Commission on Arts and Humanities
- Taxicab Commission

- Public Charter School Board/Public Charter Schools
  - University of the District of Columbia
  - UDC Community College
  - DC Public Schools
  - Office of the State Superintendent of Education
  - Alcoholic Beverage Regulation Administration
  - Office of Aging
- \*detailed to OSSE