

**CENTRAL FINANCIAL
OPERATIONS -
Deputy CFOs**

Office of Budget and
Planning (OBP)
Gordon McDonald

Office of Finance and
Treasury (OFT)
Jeffrey Barnette

Office of Financial
Operations and
Systems (OFOS)
Anthony Pompa

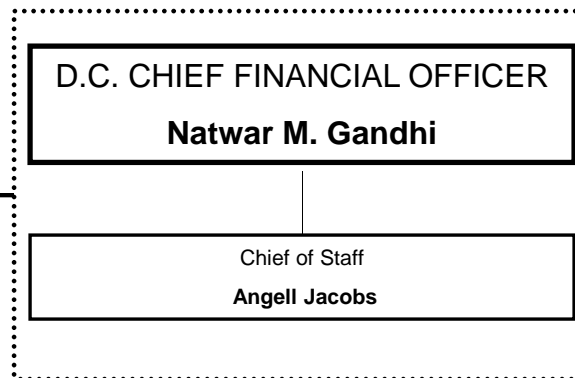
Office of Revenue
Analysis (ORA)
Fitzroy Lee

Office of Tax and
Revenue (OTR)
Stephen Cordi

Government of the District Columbia

Office of the Chief Financial Officer

Organizational Chart



EXECUTIVE SUPPORT

General Counsel
David Tseng

Integrity and Oversight
Executive Director
Mohamed Yusuff
(Interim)

Economic Development Finance
Senior Advisor and Director
John Ross

Senior Financial Policy Advisor
Vacant

Agency Chief Information
Officer
Sagar Samant
(Interim)

Management and
Administration Executive
Director
Paul Lundquist

Public Affairs Officer
David Umansky

**AGENCY FINANCIAL
OPERATIONS - Associate
CFOs**

**Agency Fiscal
Officers**

Economic Dev. and
Regulation
Cyril Byron, Jr.

DCRA: Conrad Bridges
DHCD: Andree Chan-Mann
DISB: Bright Ahaiwe
DMPED: Conrad Bridges
OPC/PSC: Gurmeet Scoggins

Government Operations
Mohamed Mohamed

EOM/DCHR: James Hurley
DCPL: Tammie Robinson
DGS: Massimo Marchiori
OAG: Victoria Syphax
DOES: Curtis Lewis
OFRM: Natalie Mayers
OCA: Paul Blake
OCTO: Phil Peng
DCOA/ORM: Shilonda Wiggins

Government Services
George Dines

DDOE: Robert Jose
DDOT: Calvin Skinner
DMV: Kimberly L. Borges
DPW: Perry Fitzpatrick

Human Support
Services
Delicia Moore
(Interim)

CFSA: Justin Kopca
DDS/ODR: Delicia Moore
DHS: Hayden Bernard
DMH: Joyce Jeter
DOH: Keith Fletcher
DHCF: Darrin Shaffer
DPR: Barbara Roberson
DYRS: Delicia Moore

Public Safety and
Justice
Angelique Hayes

DOC: Antionette
Hudson-Beckham
FEMS: Daryl Staats
MPD: Leroy Clay
OCME/CJCC: Vacant
OUC/EMA: Ashraf El-Khatib

Not-for-Profit Hospital
Corporation
Michael Davis

Education
Deloras Shepherd

UDC: Ibrahim Koroma
DCCSB: Alonzo Montalvo
DCPS: Deloras Shepherd
OSSE: Deloras Shepherd

EventsDC
Henry Mosley

DC Lottery
Buddy Roogow
Executive Director

DCLB: Keisha Paxton
(Interim)