

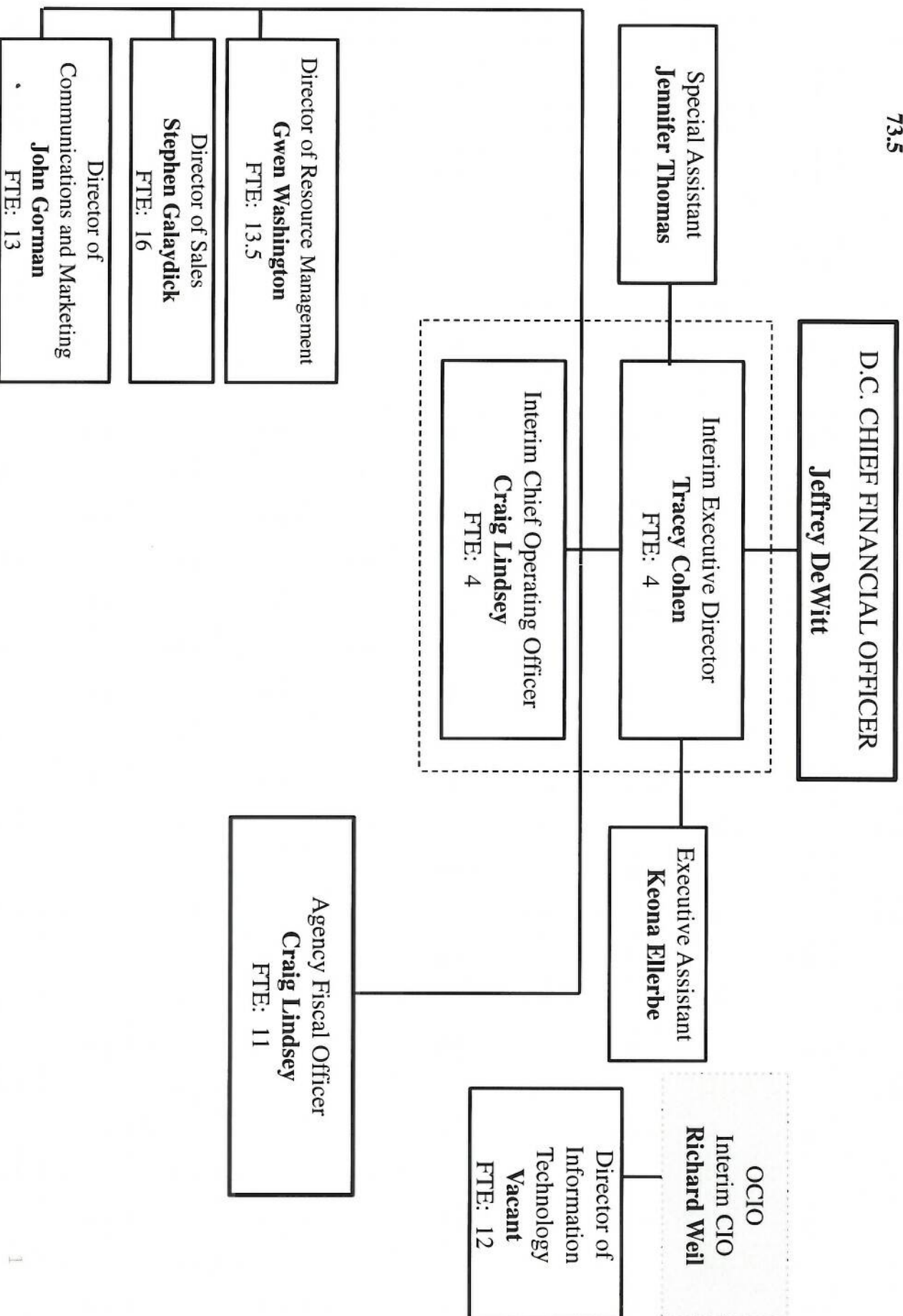
**FY 2015 Budgeted Positions**

**Total FTEs: 76**

**FTE as of 02/18/2016:  
73.5**



**Attachment A**  
*Organizational Chart*



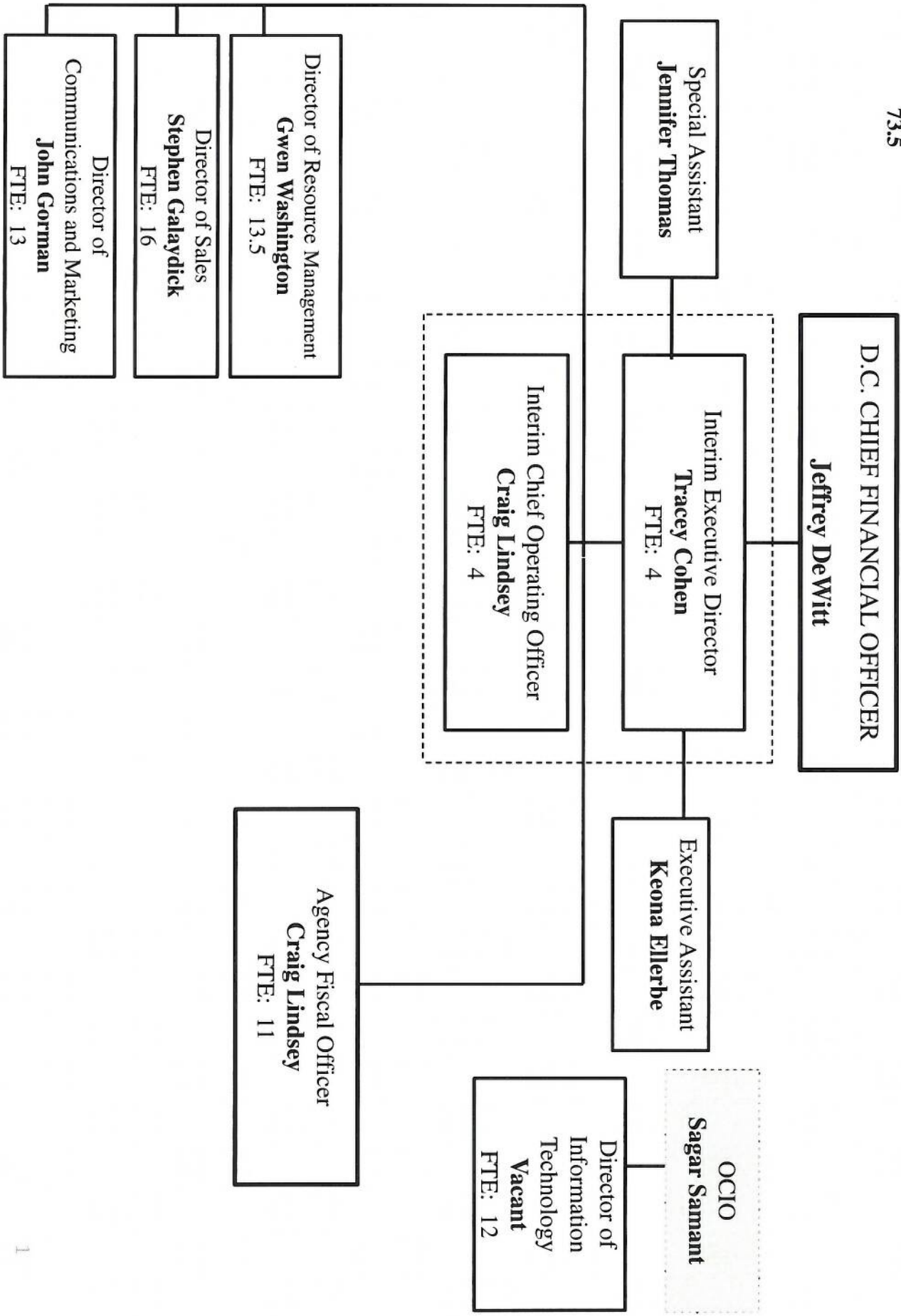
**FY 2015 Budgeted Positions**

**Total FTEs: 76**

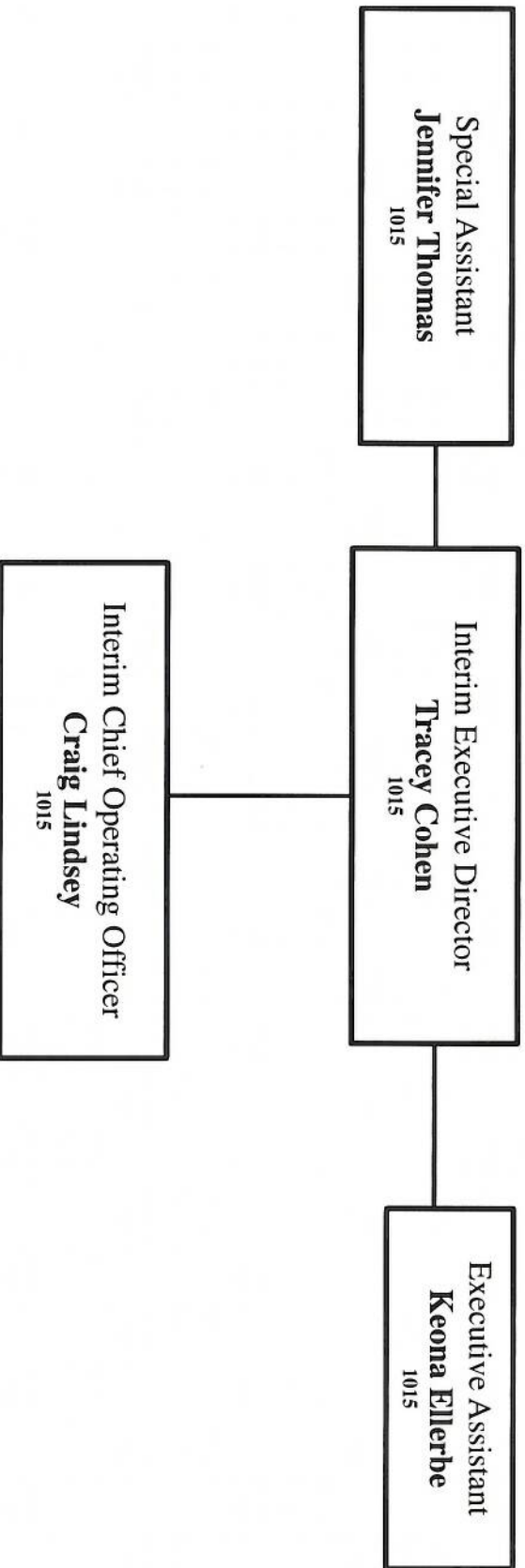
**FTE as of 02/18/2016:  
73.5**



**Attachment A**  
*Organizational Chart*

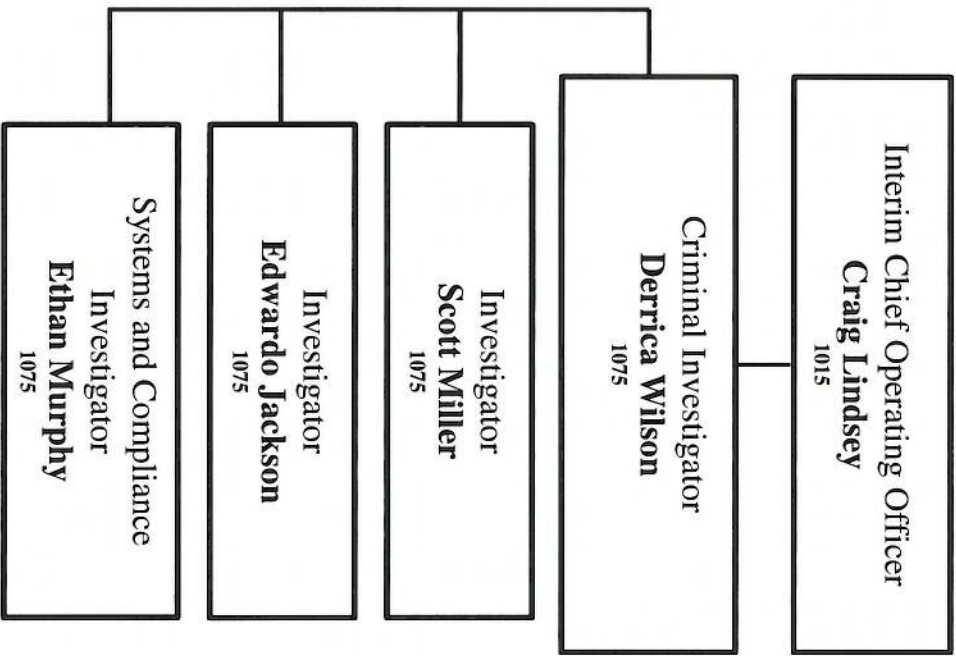


## Office of Executive Direction



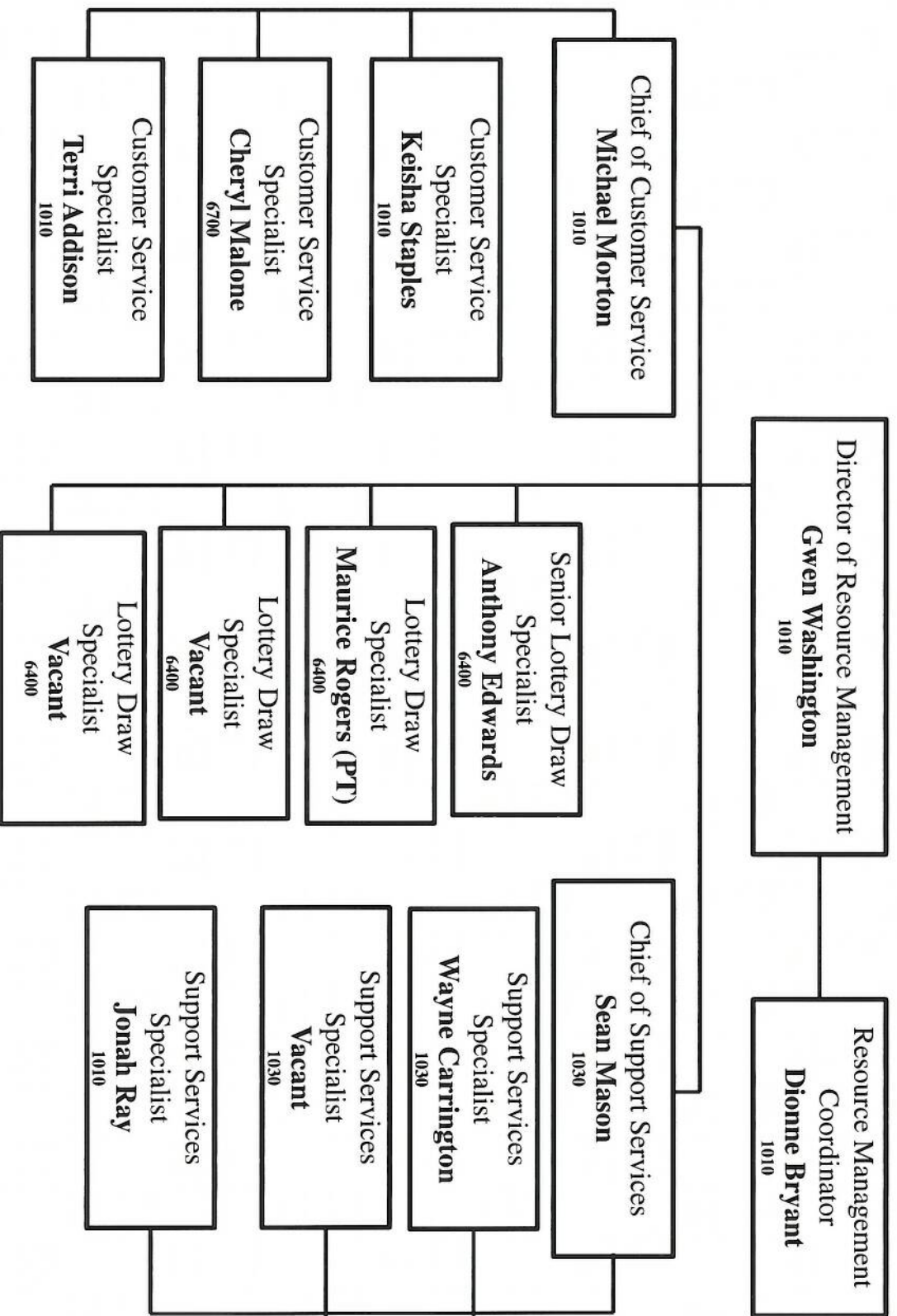
**FTE: 4**

**Security Department**



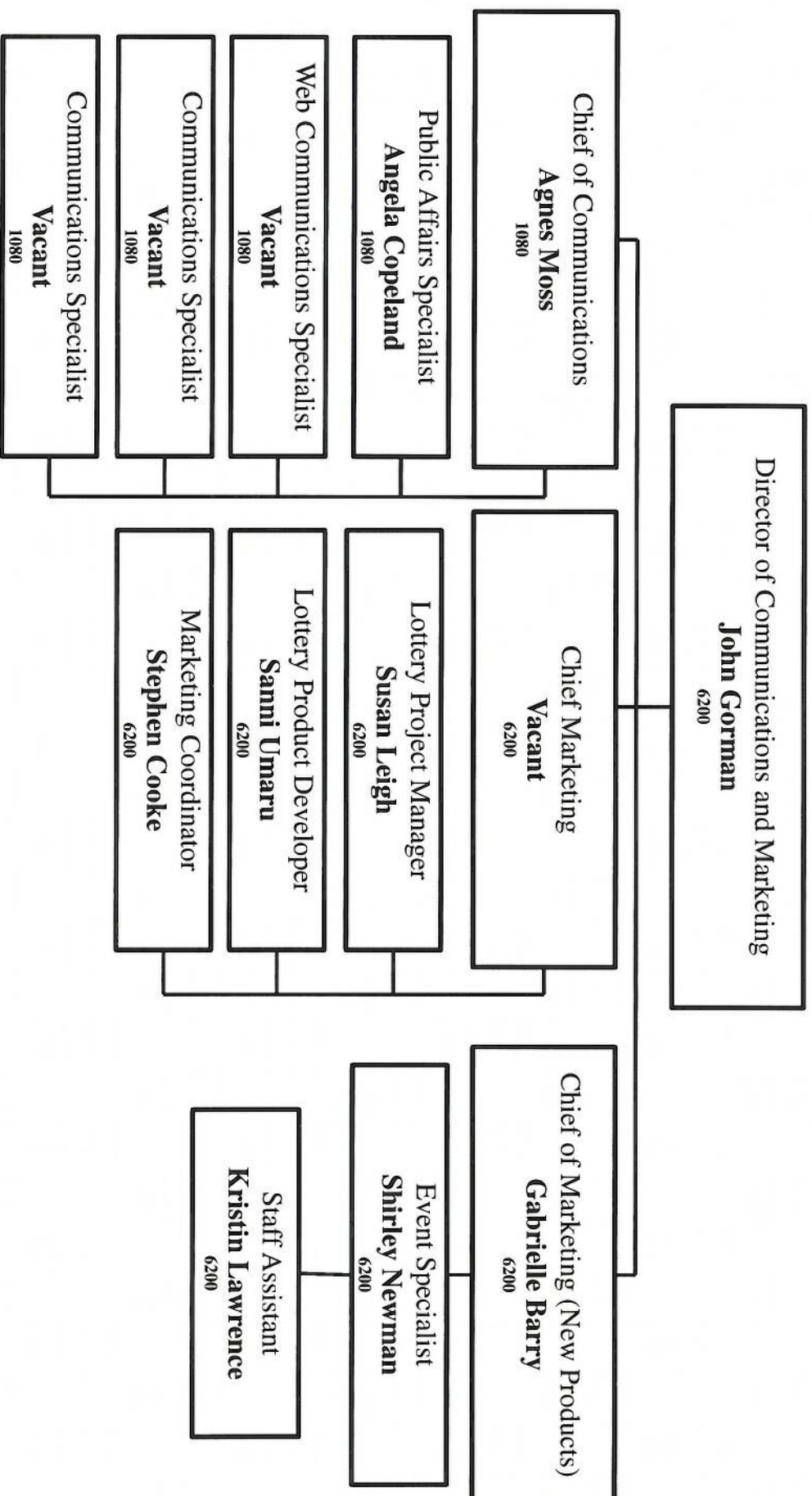
**FTE: 4**

## Office of Resources Management



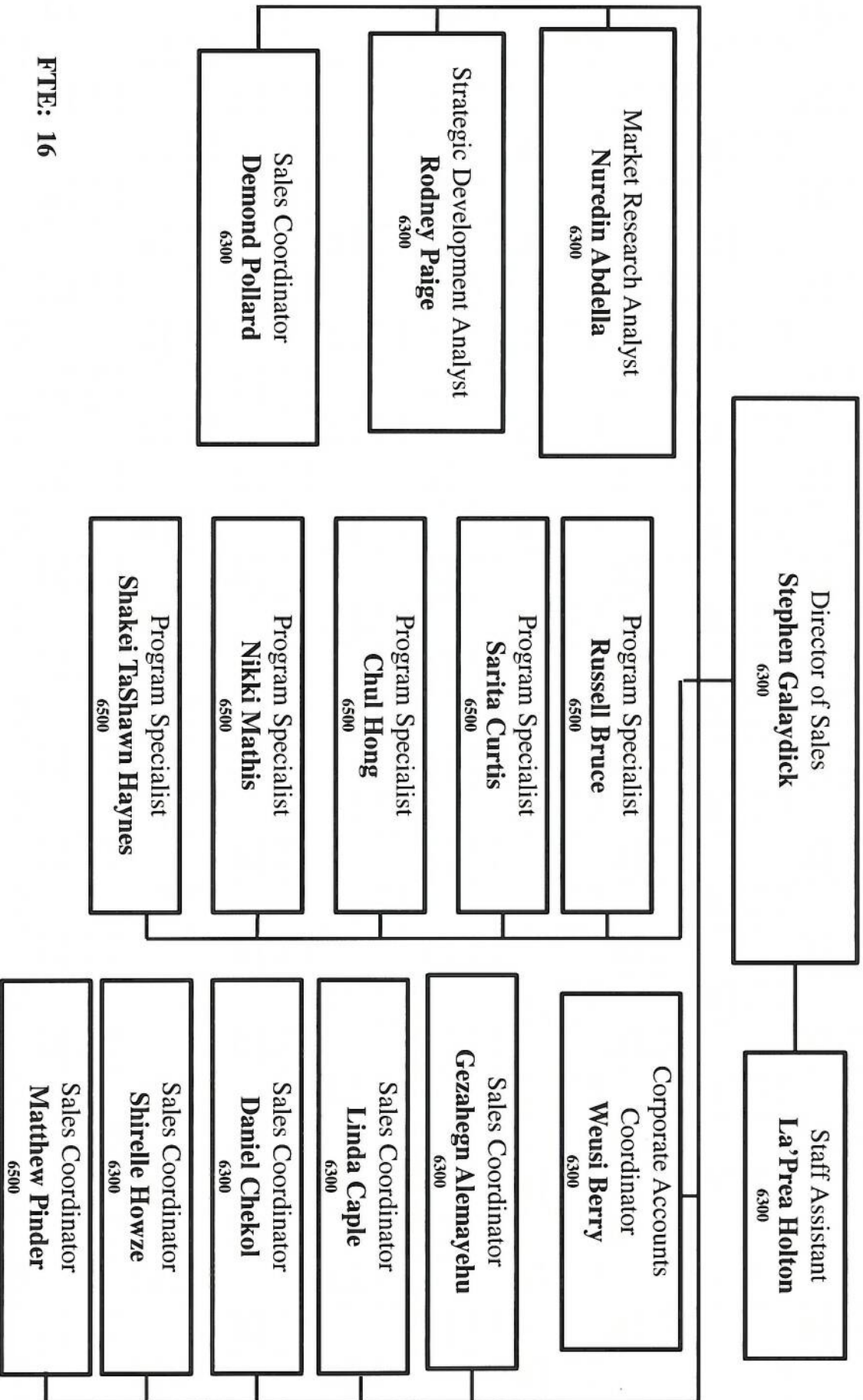


## Communications and Marketing



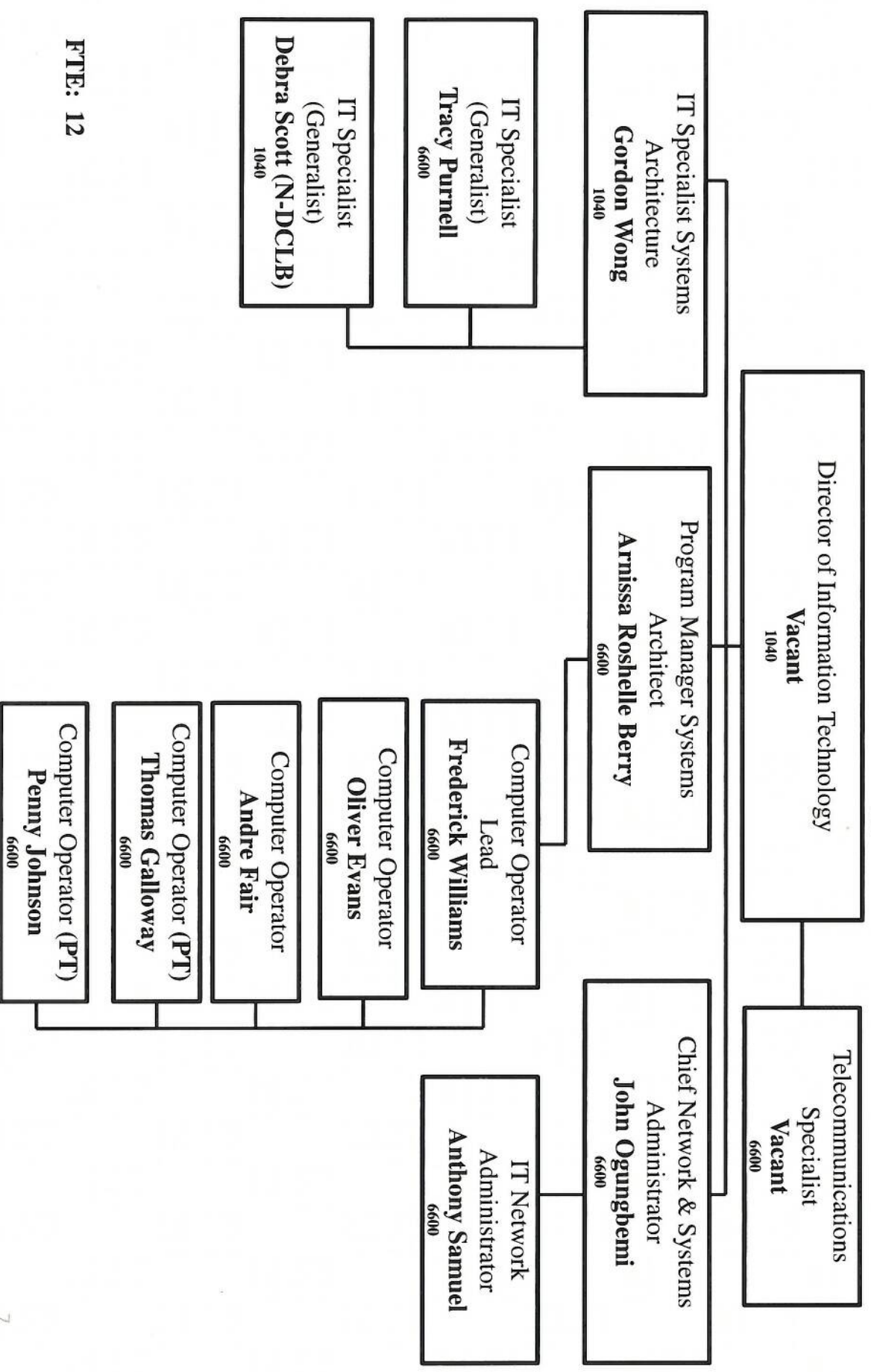
FTE: 13

## Trade Development, Licensing and Charitable Games



FTE: 16

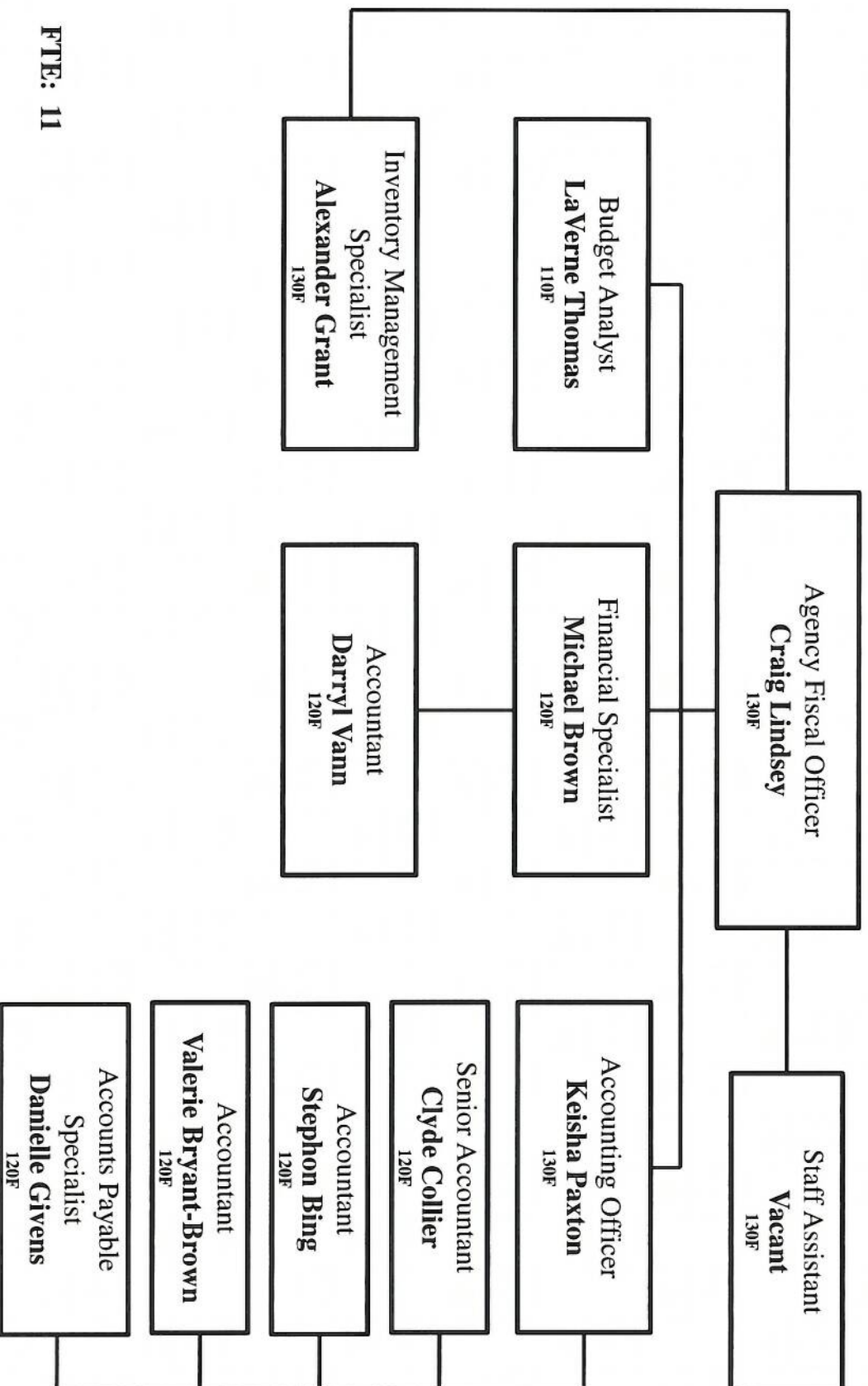
## Information Technology



FTE: 12



## Agency Financial Operations



**FTE: 11**

**Attachment A**

**DC Lottery and Charitable Games Control Board**

**Schedule-A  
FY-2016**

Position Number	Title	Name	Vacant/ Filled Status	Grade	Step	Salary	Fund Code	Program Code	Program Name	Activity	DCLB Structure	Index	Index Name	PCA	F/P Time	Head Count	FTE	CBU	SERV CD	SCHED ID
00070909	Interim Executive Director	Cohen, Tracey Hope	F	17	0	192,058	6206	1000	Agency Management Program	1015	Office of Executive Direction	91015	Executive Direction Support	10115	F	1	1	CFO	A01	A01
00002973	Chief Operating Officer	Lindsey, Craig	F	16	4	154,592	6206	1000	Agency Management Program	1015	Office of Executive Direction	91015	Executive Direction Support	10115	F	1	1	CFO	A01	A01
00035621	Special Assistant	Thomas, Jennifer B	F	13	7	101,477	6206	1000	Agency Management Program	1015	Office of Executive Direction	91015	Executive Direction Support	10115	F	1	1	CFO	A01	A01
00033387	Executive Assistant	Etienne, Keona	F	13	6	98,748	6206	1000	Agency Management Program	1015	Office of Executive Direction	91015	Executive Direction Support	10115	F	1	1	CFO	A01	A01
					<b>Total</b>	<b>546,875</b>					<b>Office of Executive Direction</b>					<b>4</b>	<b>4</b>			
00074966	Criminal Investigator	Wilson, Derrica N	F	13	5	96,020	6206	1000	Agency Management Program	1075	Security Department	91075	Security	10175	F	1	1	CFO	A01	A01
00051132	Investigator	Miller, Scott A	F	12	7	87,624	6206	1000	Agency Management Program	1075	Security Department	91075	Security	10175	F	1	1	CFO	A01	A01
00051129	Investigator	Jackson, Edwardo	F	12	1	73,868	6206	1000	Agency Management Program	1075	Security Department	91075	Security	10175	F	1	1	CFO	A01	A01
00083665	Systems And Compliance Investigator	Murphy, Eihann M	F	12	1	73,868	6206	1000	Agency Management Program	1075	Security Department	91075	Security	10175	F	1	1	CFO	A01	A01
					<b>Total</b>	<b>331,380</b>					<b>Security Department</b>					<b>4</b>	<b>4</b>			
00024911	Director Of Resources Management	Washington, Gwendolyn	F	15	5	133,280	6206	1000	Agency Management Program	1010	Office of Resource Management	91010	Human Resources	10110	F	1	1	CFO	A01	A01
00032496	Chief Of Customer Service	Morton, Michael	F	13	7	101,477	6206	1000	Agency Management Program	1010	Office of Resource Management	91010	Human Resources	10110	F	1	1	CFO	A01	A01
00007286	Chief Of Support Services	Mason, Sean	F	12	6	85,231	6206	1000	Agency Management Program	1030	Office of Resource Management	91030	Property and Fleet Management	10130	F	1	1	CFO	A01	A01
00078181	Resource Management Coordinator	Bryant, Dionne	F	12	3	78,454	6206	1000	Agency Management Program	1010	Office of Resource Management	91010	Human Resources	10110	F	1	1	CFO	A01	A01
00035382	Senior Draw Specialist	Edwards, Anthony L	F	12	3	78,454	6206	0400	Gaming Operations Program	0400	Office of Resource Management	96400	Draw Division	10640	F	1	1	CFO	A01	A01
00035056	Support Services Specialist	Carrington, George W	F	11	10	76,970	6206	1000	Agency Management Program	1030	Office of Resource Management	91030	Property and Fleet Management	10130	F	1	1	CFO	A01	A01
00051421	Customer Service Specialist	Addison, Terril D	F	11	6	69,294	6206	1000	Agency Management Program	1010	Office of Resource Management	91010	Human Resources	10110	F	1	1	CFO	A01	A01
00026689	Customer Service Specialist	Malone, Cheryl S	F	11	5	67,375	6206	0400	Gaming Operations Program	6700	Office of Resource Management	96700	Claim Center	10670	F	1	1	CFO	A01	A01
00065336	Customer Service Specialist	Shuples, Keisha Nichelle	F	11	3	63,536	6206	1000	Agency Management Program	1010	Office of Resource Management	91010	Human Resources	10110	F	1	1	CFO	A01	A01
00019757	Lottery Draw Specialist	Vacant	V	11	3	63,536	6206	6000	Gaming Operations Program	6400	Office of Resource Management	96400	Draw Division	10640	F	0	1	CFO	A01	A01
00077963	Support Services Specialist	Ray, Jonah T	F	11	2	61,617	6206	1000	Agency Management Program	1010	Office of Resource Management	91010	Human Resources	10110	F	1	1	CFO	A01	A01



**Attachment A**

**DC Lottery and Charitable Games Control Board**

**Schedule-A  
FY-2016**

Position Number	Title	Name	Vacant/ Filled Status	Grade	Step	Salary	Fund Code	Program Code	Program Name	Activity	DCLB Structure	Index	Index Name	PCA	E/P Time	Head Count	FTE	CBU	SERV CD	SCHED ID
00026968	Support Services Specialist	Vacant	V	11	1	59,698	6206	1000	Agency Management Program	1030	Office of Resource Management	91030	Property and Fleet Management	10130	F	0	1	CFO	A01	A01
00018583	Lottery Draw Specialist	Vacant	V	11	1	59,698	6206	6000	Gaming Operations Program	6400	Office of Resource Management	96400	Draw Division	10640	F	0	1	CFO	A01	A01
00028511	Lottery Draw Specialist	Royers, Maurice A	F	9	1	24,776	6206	6000	Gaming Operations Program	6400	Office of Resource Management	96400	Draw Division	10640	P	1	0.5	CFO	A01	A01
					<b>Total</b>	<b>1,023,446</b>					<b>Office of Resource Management</b>					<b>11</b>	<b>13.5</b>			
00001521	Director Of Marketing	Gorman, John B	F	15	3	125,675	6206	6000	Gaming Operations Program	6200	Communications and Marketing	96200	Marketing	10620	F	1	1	CFO	A01	A01
00036069	Chief Of Marketing	Vacant	V	14	10	129,592	6206	6000	Gaming Operations Program	6200	Communications and Marketing	96200	Marketing	10620	F	0	1	CFO	A01	A01
00073651	Chief Of Marketing (New Products)	Barry, Gabriel Dominique	F	14	10	129,592	6206	6000	Gaming Operations Program	6200	Communications and Marketing	96200	Marketing	10620	F	1	1	CFO	A01	A01
00000176	Chief Of Communications	Moss, Agnes	F	14	3	107,031	6206	1000	Agency Management Program	1080	Communications and Marketing	91080	Communications	10180	F	1	1	CFO	A01	A01
00068380	Web Communications Specialist	Vacant	V	13	10	109,663	6206	1000	Agency Management Program	1080	Communications and Marketing	91080	Communications	10180	F	0	1	CFO	A01	A01
00078236	Public Affairs Specialist	Copeland, Angela M.	F	13	7	101,477	6206	1000	Agency Management Program	1080	Communications and Marketing	91080	Communications	10180	F	1	1	CFO	A01	A01
00035692	Lottery Product Manager	Lynch, Susan M	F	13	7	101,477	6206	6000	Gaming Operations Program	6200	Communications and Marketing	96200	Marketing	10620	F	1	1	CFO	A01	A01
0007154	Events Specialist	Newman, Shirley	F	13	5	96,020	6206	6000	Gaming Operations Program	6200	Communications and Marketing	96200	Marketing	10620	F	1	1	CFO	A01	A01
00035424	Lottery Product Developer	Umaru, Sami A	F	12	5	83,039	6206	6000	Gaming Operations Program	6200	Communications and Marketing	96200	Marketing	10620	F	1	1	CFO	A01	A01
00077447	Marketing Coordinator	Cooke II, Stephen A	F	12	2	76,161	6206	6000	Gaming Operations Program	6200	Communications and Marketing	96200	Marketing	10620	F	1	1	CFO	A01	A01
00032709	Communications Specialist	Vacant	V	12	1	73,868	6206	1000	Agency Management Program	1080	Communications and Marketing	91080	Communications	10180	F	0	1	CFO	A01	A01
00077556	Communications Specialist	Vacant	V	12	0	73,868	6206	1000	Agency Management Program	1080	Communications and Marketing	91080	Communications	10180	F	0	1	CFO	A01	A01
00083516	Events And Promotions Coordinator	Lawrence, Kristin K	F	11	5	67,375	6206	6000	Gaming Operations Program	6200	Communications and Marketing	96200	Marketing	10620	F	1	1	CFO	A01	A01
					<b>Total</b>	<b>1,274,838</b>					<b>Communications and Marketing</b>					<b>9</b>	<b>13</b>			
00004615	Director of Sales	Galaydeck, Stephen E.	F	15	1	118,118	6206	6000	Gaming Operations Program	6300	Trade Development, Licensing and Charitable Games	96300	Trade Development	10630	F	1	1	CFO	A01	A01
00073584	Game Development Specialist	Vacant	V	14	1	100,585	6206	6000	Gaming Operations Program	6300	Trade Development, Licensing and Charitable Games	96300	Trade Development	10630	F	0	0	CFO	A01	A01
00017085	Chief Charitable Games & Licensing	Vacant	V	14	1	100,585	6206	6000	Gaming Operations Program	6500	Trade Development, Licensing and Charitable Games	96500	Licensing and Charitable Games	10650	F	0	0	CFO	A01	A01
00074849	Corporate Accounts Coordinator	Berry, Weusi K.	F	12	10	94,502	6206	6000	Gaming Operations Program	6300	Trade Development, Licensing and Charitable Games	96300	Trade Development	10630	F	1	1	CFO	A01	A01

**Attachment A**

**DC Lottery and Charitable Games Control Board**

**Schedule-A**

FY-2016

Position Number	Title	Name	Vacant/ Filled Status	Grade	Step	Salary	Fund Code	Program Code	Program Name	Activity	DCLB Structure	Index	Index Name	PCA	F/P Time	Head Count	FTE	CBU	SERV CD	SCHED ID
00051134	Program Specialist	Bruce Russell	F	12	10	94,502	6206	6000	Gaming Operations Program	6500	Trade Development, Licensing and Charitable Games	96500	Licensing and Charitable Games	10650	F	1	1	CFD	A01	A01
00051136	Program Specialist	HongChul	F	12	8	89,917	6206	6000	Gaming Operations Program	6500	Trade Development, Licensing and Charitable Games	96500	Licensing and Charitable Games	10650	F	1	1	CFD	A01	A01
00051133	Program Specialist	Curtis Santa Julia	F	12	6	85,331	6206	6000	Gaming Operations Program	6500	Trade Development, Licensing and Charitable Games	96500	Licensing and Charitable Games	10650	F	1	1	CFD	A01	A01
0002108	Market Research Analyst	Abdella Nureidin	F	12	5	83,039	6206	6000	Gaming Operations Program	6300	Trade Development, Licensing and Charitable Games	96300	Trade Development	10630	F	1	1	CFD	A01	A01
00051216	Sales Coordinator	Howez Shirelle	F	12	5	83,039	6206	6000	Gaming Operations Program	6300	Trade Development, Licensing and Charitable Games	96300	Trade Development	10630	F	1	1	CFD	A01	A01
00087191	Strategic Development Analyst	Paige Rodney J	F	12	4	80,746	6206	6000	Gaming Operations Program	6300	Trade Development, Licensing and Charitable Games	96300	Trade Development	10630	F	1	1	CFD	A01	A01
00071885	Program Specialist	Mathis Nikki	F	12	4	80,746	6206	6000	Gaming Operations Program	6500	Trade Development, Licensing and Charitable Games	96500	Licensing and Charitable Games	10650	F	1	1	CFD	A01	A01
00073579	Sales Coordinator	Cupiel Linda M	F	12	3	78,454	6206	6000	Gaming Operations Program	6300	Trade Development, Licensing and Charitable Games	96300	Trade Development	10630	F	1	1	CFD	A01	A01
00051218	Sales Coordinator	Alemayehu Gezahegn Hailu	F	12	1	73,868	6206	6000	Gaming Operations Program	6300	Trade Development, Licensing and Charitable Games	96300	Trade Development	10630	F	1	1	CFD	A01	A01
00051220	Sales Coordinator	Chokol Daniel Melaku	F	12	1	73,868	6206	6000	Gaming Operations Program	6300	Trade Development, Licensing and Charitable Games	96300	Trade Development	10630	F	1	1	CFD	A01	A01
00088357	Sales Coordinator	Pollard Demand	F	11	6	69,294	6206	6000	Gaming Operations Program	6300	Trade Development, Licensing and Charitable Games	96300	Trade Development	10630	F	1	1	CFD	A01	A01
00035618	Staff Assistant	Holton LaPrea R.	F	11	5	67,375	6206	6000	Gaming Operations Program	6300	Trade Development, Licensing and Charitable Games	96300	Trade Development	10630	F	1	1	CFD	A01	A01
00051135	Sales Coordinator	Pinder Matthew Carol	F	9	8	60,631	6206	6000	Gaming Operations Program	6300	Trade Development, Licensing and Charitable Games	96300	Trade Development	10630	F	1	1	CFD	A01	A01
00088372	Program Specialist	Haynes Shakei Tashawn	F	9	1	49,551	6206	6000	Gaming Operations Program	6500	Trade Development, Licensing and Charitable Games	96500	Licensing and Charitable Games	10650	F	1	1	CFD	A01	A01
	<b>Total</b>					<b>1,484,151</b>										<b>16</b>	<b>16</b>			



**Attachment A**

**DC Lottery and Charitable Games Control Board**

**Schedule-A  
FY-2016**

Position Number	Title	Name	Vacant/ Filled Status	Grade	Step	Salary	Fund Code	Program Code	Program Name	Activity	DCLB Structure	Index	Index Name	PCA	F/P Time	Head Count	FTE	CRU	SERV CD	SCHED ID
00034077	Director Information Technology	Vacant	V	15	4	129,453	6206	1000	Agency Management Program	1040	Information Technology	91040	Information Technology	10140	F	0	1	CFO	A01	A01
00005466	IT Specialist Systems Architecture	Wong, Gordon	F	14	10	129,592	6206	1000	Agency Management Program	1040	Information Technology	91040	Information Technology	10140	F	1	1	CFO	A01	A01
00014216	Chief Network & Systems Administrator	Gempen, Jubril John	F	14	10	129,592	6206	6000	Gaming Operations Program	6600	Information Technology	96600	Information Technology (Games)	10660	F	1	1	CFO	A01	A01
00032785	Info Tech Network Administrator	Samuel, Anthony	F	14	8	123,146	6206	6000	Gaming Operations Program	6600	Information Technology	96600	Information Technology (Games)	10660	F	1	1	AMA	A01	X01
00032798	Program Manager, Systems Architecture	Berry, Amissa Roshele	F	14	3	107,031	6206	6000	Gaming Operations Program	6600	Information Technology	96600	Information Technology (Games)	10660	F	1	1	CFO	A01	A01
00007959	Telecommunications Specialist	Vacant	V	14	1	100,585	6206	6000	Gaming Operations Program	6600	Information Technology	96600	Information Technology (Games)	10660	F	0	1	CFO	A01	A01
00051221	IT Specialist (Generalist)	Scott, Debra C.	F	12	6	85,332	6206	1000	Agency Management Program	1040	Information Technology	91040	Information Technology	10140	F	1	1	AMA	A01	X01
00036296	IT Specialist (Generalist)	Purnell, Tracy D.	F	12	4	80,746	6206	6000	Gaming Operations Program	6600	Information Technology	96600	Information Technology (Games)	10660	F	1	1	AMA	A01	X01
00035047	Computer Operator Lead	Williams, Frederick E.	F	9	10	63,798	6206	6000	Gaming Operations Program	6600	Information Technology	96600	Information Technology (Games)	10660	F	1	1	AMA	A01	X02
00028513	Computer Operator	Evans, Oliver	F	8	10	57,962	6206	6000	Gaming Operations Program	6600	Information Technology	96600	Information Technology (Games)	10660	F	1	1	AMA	A01	X02
00036625	Computer Operator	Johnson, Penny	F	8	10	57,962	6206	6000	Gaming Operations Program	6600	Information Technology	96600	Information Technology (Games)	10660	P	1	0.5	AMA	A01	X02
00013399	Computer Operator	Galloway, Thomas W.	F	8	6	52,222	6206	6000	Gaming Operations Program	6600	Information Technology	96600	Information Technology (Games)	10660	P	1	0.5	AMA	A01	X02
00021655	Computer Operator	Fair, Andre L.	F	8	5	50,787	6206	6000	Gaming Operations Program	6600	Information Technology	96600	Information Technology (Games)	10660	F	1	1	AMA	A01	X02
					<b>Total</b>	<b>1,168,208</b>					<b>Information Technology</b>					<b>11</b>	<b>12</b>			
00008419	Agency Fiscal Officer	Vacant	V	15	0	135,118	6206	100F	Agency Financial Operations	130F	Agency Financial Operations	9130F	Fiscal Officer	1130F	F	0	1	CFO	A01	A01
00035379	Accounting Officer	Paxton, Keisha	F	14	5	113,477	6206	100F	Agency Financial Operations	130F	Agency Financial Operations	9130F	Fiscal Officer	1130F	F	1	1	CFO	A01	A01
00003330	Financial Specialist	Brown, Michael A.	F	13	10	109,663	6206	100F	Agency Financial Operations	120F	Agency Financial Operations	9120F	Accounting Operations	1120F	F	1	1	CFO	A01	A01
00035223	Senior Accountant	Collier, Clyde	F	13	3	90,563	6206	100F	Agency Financial Operations	120F	Agency Financial Operations	9120F	Accounting Operations	1120F	F	1	1	CFO	A01	A01
00034092	Budget Analyst	Thomas, Avenne H.	F	12	10	94,502	6206	100F	Agency Financial Operations	110F	Agency Financial Operations	9110F	Budget Operations	1110F	F	1	1	CFO	A01	A01
00018642	Accountant	Bryant Brown, Valerie C.	F	12	8	89,917	6206	100F	Agency Financial Operations	120F	Agency Financial Operations	9120F	Accounting Operations	1120F	F	1	1	CFO	A01	A01
00035525	Accountant	Bing, Stephen	F	12	8	89,917	6206	100F	Agency Financial Operations	120F	Agency Financial Operations	9120F	Accounting Operations	1120F	F	1	1	CFO	A01	A01
00016813	Accountant	Vann, Darryl	F	12	4	80,746	6206	100F	Agency Financial Operations	120F	Agency Financial Operations	9120F	Accounting Operations	1120F	F	1	1	CFO	A01	A01



**Attachment A**

**DC Lottery and Charitable Games Control Board**

**Schedule-A**

FY-2016

Position Number	Title	Name	Vacant/ Filled Status	Grade	Step	Salary	Fund Code	Program Code	Program Name	Activity	DCLB Structure	Index	Index Name	PCA	F/P Time	Head Count	FTE	CRU	SPRV CD	SCHED ID
00085826	Inventory Management Specialist	Alexander,Grant	F	12	1	73,868	6206	100F	Agency Financial Operations	130F	Agency Financial Operations	9130F	Fiscal Officer	1130F	F	1	1	CFD	A01	A01
00035225	Staff Assistant	Vacant	V	11	6	69,294	6206	100F	Agency Financial Operations	130F	Agency Financial Operations	9130F	Fiscal Officer	1130F	F	0	1	CFD	A01	A01
00035524	Accounts Payable Technician	Givens,Danielle Amealber	F	9	6	57,466	6206	100F	Agency Financial Operations	120F	Agency Financial Operations	9120F	Accounting Operations	1120F	F	1	1	CFD	A01	A01
					<b>Total</b>	<b>1,004,531</b>					<b>Agency Financial Operations</b>					<b>9</b>	<b>11</b>			
					<b>Grand Total</b>	<b>6,833,429</b>										<b>64</b>	<b>73.5</b>			

# Of Vehicles	FY2016				Dept.	Assigned Driver	FY2016		Inspection Expiration Date
	Vehicle Tag #	Vehicle Model	Year	Vehicle Tag #			Vehicle Tag #	Expiration Date	
1	DC 0795	Dodge Caravan	2010	0795	D. Chekol	0795	October 13, 2016		
2	DC 0796	Dodge Caravan	2010	0796	M. Pinder	0796	October 13, 2016		
3	DC 7915	Dodge Caravan	2010	7915	S. Howes	7915	October 30, 2016		
4	DC 7916	Dodge Caravan	2010	7916	DPW	7916	October 21, 2015		
5	DC 8151	Dodge Ram Cargo	2012	8151	W. Berry	8151	February 1, 2016		
6	DC 8436	Dodge Caravan	2012	8436	Multi	8436	November 6, 2016		
7	DC 8437	Dodge Caravan	2012	8437	Multi	8437	December 26, 2016		
8	DC 8529	Dodge Ram Cargo	2012	8529	N. Mathis	8529	February 1, 2016		
9	DC 8530	Dodge Ram Cargo	2012	8530	G. Alemayehu (Alex)	8530	February 1, 2016		
10	DC 9437	Dodge Caravan	2013	9437	L. Caples	9437	December 1, 2017		
11	DC 9438	Dodge Caravan	2013	9438	C. Hong	9438	December 1, 2017		
12	DC 9439	Dodge Caravan	2013	9439	Multi	9439	December 1, 2017		
13	DC 9440	Dodge Caravan	2013	9440	Multi	9440	December 1, 2017		
14	DC 9445	Dodge Caravan	2013	9445	R. Bruce	9445	December 1, 2017		
15	DC 9521	Utilimaster LLM	2013	9521	Multi	9521	October 1, 2016		

Attachment D  
Travel

Employee Name	Employee Title	Conference	Travel Amount
Ridgely Bennett	Chief Counsel	LaFleur's Conference	\$694.65
		NASPL 2015 Conference	\$1050.68
		<b>Total</b> <b>\$1745.33</b>	
Weusi Berry	Corporate Accounts Coordinator	LaFleur's Conference	\$891.11
		<b>Total</b> <b>\$891.11</b>	
Tracey Cohen	Interim Executive Director	NASPL 2014 Conference	\$567.30
		PGRI	\$1247.08
		TV Shoot	\$266.00
		LaFleur's Conference	\$1048.70
		<b>Total</b> <b>\$3129.08</b>	
Stephen Galaydick	Director, Sales	NASPL 2015 Conference	\$827.79
		<b>Total</b> <b>\$827.79</b>	
Danielle Givens	Accounts Payable Technician	LaFleur's Conference	\$891.11
		<b>Total</b> <b>\$891.11</b>	
John Gorman	Director, Marketing & Communication	NASPL Game Developers	\$1329.52
		TV Shoot	\$700.64
		NASPL 2015 Conference	\$787.79
		<b>Total</b> <b>\$2817.95</b>	
Antar Johnson	Assistant General Counsel	NASPL	\$1727.36
		<b>Total</b> <b>\$1727.36</b>	
Bruce Jones	Director, IT	NASPL	\$1461.36
		<b>Total</b> <b>\$1461.36</b>	
Susan Leigh	Lottery Product Manager	NASPL	\$1461.36
		<b>Total</b> <b>\$1461.36</b>	
Craig Lindsey	Interim Chief Operating Officer	NASPL 2014 Conference	\$567.30

		GFOA	\$737.52
		NASPL 2015 Conference	\$787.79
		<b>Total \$2092.61</b>	
Rodney Paige	Strategic Development Analyst	LaFleur's Conference	\$891.11
		Intralot Meeting	\$661.83
		<b>Total \$1552.94</b>	
Jennifer Thomas	Special Assistant	NASPL 2015 Conference	\$787.79
		<b>Total \$787.79</b>	
Gwen Washington	Director, ORM	NASPL 2014 Conference	\$567.30
		<b>Total \$567.30</b>	
Derrica Wilson	Chief Investigator	LaFleur's Conference	\$1048.70
		<b>Total \$1048.70</b>	

**Attachment E**

**DC Lottery and Charitable Games Control Board  
Overtime Report  
FY 2016**

PP	PPB DT	PPE DT	PAY DT	AGY	AY	FUND	INDEX	PCA	NAME	EMPLID	POSITION	HR133	OVTM-AMT133
3	10-Jan-16	23-Jan-16	2-Feb-16	DC0	16	6206	96300	10630	Berry, Weusi K.	66397	74849	1.5	68.15
4	24-Jan-16	6-Feb-16	16-Feb-16	DC0	16	6206	96300	10630	Berry, Weusi K.	66397	74849	4	181.73
									<b>Berry, Weusi K. Total</b>			<b>5.5</b>	<b>249.88</b>
2	27-Dec-15	9-Jan-16	19-Jan-16	DC0	16	6206	9120F	1120F	Bryant Brown, Valerie C	18784	18642	10	432.29
4	24-Jan-16	6-Feb-16	16-Feb-16	DC0	16	6206	9120F	1120F	Bryant Brown, Valerie C	18784	18642	10	453.90
21	20-Sep-15	3-Oct-15	13-Oct-15	DC0	16	6206	9120F	1120F	Bryant Brown, Valerie C	18784	18642	10	524.63
22	4-Oct-15	17-Oct-15	27-Oct-15	DC0	16	6206	9120F	1120F	Bryant Brown, Valerie C	18784	18642	15	907.82
23	18-Oct-15	31-Oct-15	10-Nov-15	DC0	16	6206	9120F	1120F	Bryant Brown, Valerie C	18784	18642	5	216.15
24	1-Nov-15	14-Nov-15	24-Nov-15	DC0	16	6206	9120F	1120F	Bryant Brown, Valerie C	18784	18642	10	432.29
25	15-Nov-15	28-Nov-15	8-Dec-15	DC0	16	6206	9120F	1120F	Bryant Brown, Valerie C	18784	18642	5	216.15
26	29-Nov-15	12-Dec-15	22-Dec-15	DC0	16	6206	9120F	1120F	Bryant Brown, Valerie C	18784	18642	2.5	108.07
									<b>Bryant Brown, Valerie C Total</b>			<b>67.5</b>	<b>3,291.30</b>
3	10-Jan-16	23-Jan-16	2-Feb-16	DC0	16	6206	96300	10630	Chokol, Daniel Melaku	79409	51220	7	200.91
									<b>Chokol, Daniel Melaku Total</b>			<b>7</b>	<b>200.91</b>
1	13-Dec-15	26-Dec-15	5-Jan-16	DC0	16	6206	9120F	1120F	Collier, Clyde	73096	35223	10	435.40
2	27-Dec-15	9-Jan-16	19-Jan-16	DC0	16	6206	9120F	1120F	Collier, Clyde	73096	35223	12.5	544.25
4	24-Jan-16	6-Feb-16	16-Feb-16	DC0	16	6206	9120F	1120F	Collier, Clyde	73096	35223	17.5	761.95
21	20-Sep-15	3-Oct-15	13-Oct-15	DC0	16	6206	9120F	1120F	Collier, Clyde	73096	35223	5	211.36
22	4-Oct-15	17-Oct-15	27-Oct-15	DC0	16	6206	9120F	1120F	Collier, Clyde	73096	35223	5	217.70
23	18-Oct-15	31-Oct-15	10-Nov-15	DC0	16	6206	9120F	1120F	Collier, Clyde	73096	35223	5	217.70
24	1-Nov-15	14-Nov-15	24-Nov-15	DC0	16	6206	9120F	1120F	Collier, Clyde	73096	35223	5	217.70
25	15-Nov-15	28-Nov-15	8-Dec-15	DC0	16	6206	9120F	1120F	Collier, Clyde	73096	35223	5	217.70
26	29-Nov-15	12-Dec-15	22-Dec-15	DC0	16	6206	9120F	1120F	Collier, Clyde	73096	35223	7.5	326.55



**DC Lottery and Charitable Games Control Board**  
**Overtime Report**  
**FY 2016**

PP	PPB DT	PPE DT	PAY DT	AGY	AY	FUND	INDEX	PCA	NAME	EMPLID	POSITION	HR133	OVTM-AMT133
<b>Collier, Clyde Total</b>												<b>72.5</b>	<b>3,150.31</b>
3	10-Jan-16	23-Jan-16	2-Feb-16	DC0	16	6206	96400	10640	Edwards,Anthony L	31968	35382	4.5	254.60
26	29-Nov-15	12-Dec-15	22-Dec-15	DC0	16	6206	96400	10640	Edwards,Anthony L	31968	35382	3	169.73
<b>Edwards,Anthony L Total</b>												<b>7.5</b>	<b>424.33</b>
2	27-Dec-15	9-Jan-16	19-Jan-16	DC0	16	6206	96600	10660	Evans,Oliver	55625	28513	4	168.84
23	18-Oct-15	31-Oct-15	10-Nov-15	DC0	16	6206	96600	10660	Evans,Oliver	55625	28513	3.5	149.38
<b>Evans,Oliver Total</b>												<b>7.5</b>	<b>318.22</b>
1	13-Dec-15	26-Dec-15	5-Jan-16	DC0	16	6206	96600	10660	Fair,Andre L.	43766	21655	5	249.92
25	15-Nov-15	28-Nov-15	8-Dec-15	DC0	16	6206	96600	10660	Fair,Andre L.	43766	35047	5	130.53
<b>Fair,Andre L. Total</b>												<b>10</b>	<b>380.45</b>
25	15-Nov-15	28-Nov-15	8-Dec-15	DC0	16	6206	96300	10630	Holton,La'Prea R.	35139	35618	4	145.77
<b>Holton,La'Prea R. Total</b>												<b>4</b>	<b>145.77</b>
1	13-Dec-15	26-Dec-15	5-Jan-16	DC0	16	6206	91030	10130	Mason,Sean	38398	7286	10	553.83
3	10-Jan-16	23-Jan-16	2-Feb-16	DC0	16	6206	91030	10130	Mason,Sean	38398	7286	7	287.17
4	24-Jan-16	6-Feb-16	16-Feb-16	DC0	16	6206	91030	10130	Mason,Sean	38398	7286	5	205.12
21	20-Sep-15	3-Oct-15	13-Oct-15	DC0	16	6206	91030	10130	Mason,Sean	38398	7286	7.5	448.08
22	4-Oct-15	17-Oct-15	27-Oct-15	DC0	16	6206	91030	10130	Mason,Sean	38398	7286	7.5	307.68
23	18-Oct-15	31-Oct-15	10-Nov-15	DC0	16	6206	91030	10130	Mason,Sean	38398	7286	11.5	625.63
24	1-Nov-15	14-Nov-15	24-Nov-15	DC0	16	6206	91030	10130	Mason,Sean	38398	7286	9	369.22
25	15-Nov-15	28-Nov-15	8-Dec-15	DC0	16	6206	91030	10130	Mason,Sean	38398	7286	7	287.17
26	29-Nov-15	12-Dec-15	22-Dec-15	DC0	16	6206	91030	10130	Mason,Sean	38398	7286	7.5	307.68
<b>Mason,Sean Total</b>												<b>72</b>	<b>3,391.58</b>
2	27-Dec-15	9-Jan-16	19-Jan-16	DC0	16	6206	96500	10650	Mathis,Nikki	61624	71885	8	465.84

DCLB

OVTM RPRT

Source: 485 Report

Date: 02-17-2016

DC Lottery and Charitable Games Control Board  
Overtime Report  
FY 2016

PP	PPB DT	PPE DT	PAY DT	AGY	AY	FUND	INDEX	PCA	NAME	EMPLID	POSITION	HR133	OVTM-AMT133
1	13-Dec-15	26-Dec-15	5-Jan-16	DC0	16	6206	91075	10175	Mathis,Nikki Total	56305	51132	3	465.84
									Miller,Scott A			3	189.57
									Miller,Scott A Total			3	189.57
2	27-Dec-15	9-Jan-16	19-Jan-16	DC0	16	6206	91075	10175	Murphy,Ethan M	81216	83565	4	133.26
3	10-Jan-16	23-Jan-16	2-Feb-16	DC0	16	6206	91075	10175	Murphy,Ethan M	81216	83565	4	133.26
									Murphy,Ethan M Total			8	266.52
3	10-Jan-16	23-Jan-16	2-Feb-16	DC0	16	6206	91010	10110	Ray,Jonah T	78120	77963	2	88.87
23	18-Oct-15	31-Oct-15	10-Nov-15	DC0	16	6206	91010	10110	Ray,Jonah T	78120	77963	4	177.74
24	1-Nov-15	14-Nov-15	24-Nov-15	DC0	16	6206	91010	10110	Ray,Jonah T	78120	77963	5	148.12
									Ray,Jonah T Total			11	414.73
3	10-Jan-16	23-Jan-16	2-Feb-16	DC0	16	6206	96600	10660	Sannuel,Anthony	5635	32785	3	266.42
22	4-Oct-15	17-Oct-15	27-Oct-15	DC0	16	6206	96600	10660	Sannuel,Anthony	5635	32785	4	355.23
									Sannuel,Anthony Total			7	621.65
24	1-Nov-15	14-Nov-15	24-Nov-15	DC0	16	6206	91040	10140	Scott,Debra C	28304	51221	10	598.84
25	15-Nov-15	28-Nov-15	8-Dec-15	DC0	16	6206	91040	10140	Scott,Debra C	28304	51221	4	239.54
									Scott,Debra C Total			14	838.38
3	10-Jan-16	23-Jan-16	2-Feb-16	DC0	16	6206	96600	10660	Williams,Frederick E	89275	35047	3	138.02
4	24-Jan-16	6-Feb-16	16-Feb-16	DC0	16	6206	96600	10660	Williams,Frederick E	89275	35047	3	139.04
									Williams,Frederick E Total			6	277.06
<b>Grand Total</b>												<b>310.5</b>	<b>14,626.50</b>

**Attachment E**

**DC Lottery and Charitable Games Control Board  
Overtime Report  
FY 2015**

PP	PPB DT	PPE DT	PAY DT	AGY	AY	FUND	INDEX	PCA	NAME	EMPLID	POSITION	HR133	AMT133	OVTM-
22	5-Oct-14	18-Oct-14	28-Oct-14	DC0	15	6206	91010	10110	Alexander,Grant	66012	77962	5	148.28	
26	30-Nov-14	13-Dec-14	23-Dec-14	DC0	15	6206	91010	10110	Alexander,Grant	66012	77962	8	355.88	
									<b>Alexander,Grant Total</b>			<b>13</b>	<b>504.16</b>	
1	14-Dec-14	27-Dec-14	6-Jan-15	DC0	15	6206	9120F	1120F	Bryant Brown, Valerie C	18784	18642	12.5	524.63	
2	28-Dec-14	10-Jan-15	20-Jan-15	DC0	15	6206	9120F	1120F	Bryant Brown, Valerie C	18784	18642	7.5	314.78	
3	11-Jan-15	24-Jan-15	3-Feb-15	DC0	15	6206	9120F	1120F	Bryant Brown, Valerie C	18784	18642	15	734.48	
4	25-Jan-15	7-Feb-15	17-Feb-15	DC0	15	6206	9120F	1120F	Bryant Brown, Valerie C	18784	18642	10	461.67	
5	8-Feb-15	21-Feb-15	3-Mar-15	DC0	15	6206	9120F	1120F	Bryant Brown, Valerie C	18784	18642	20	923.34	
6	22-Feb-15	7-Mar-15	17-Mar-15	DC0	15	6206	9120F	1120F	Bryant Brown, Valerie C	18784	18642	5	209.85	
7	8-Mar-15	21-Mar-15	31-Mar-15	DC0	15	6206	9120F	1120F	Bryant Brown, Valerie C	18784	18642	5	272.81	
8	22-Mar-15	4-Apr-15	14-Apr-15	DC0	15	6206	9120F	1120F	Bryant Brown, Valerie C	18784	18642	5	209.85	
9	5-Apr-15	18-Apr-15	28-Apr-15	DC0	15	6206	9120F	1120F	Bryant Brown, Valerie C	18784	18642	7.5	314.78	
10	19-Apr-15	2-May-15	12-May-15	DC0	15	6206	9120F	1120F	Bryant Brown, Valerie C	18784	18642	5	209.85	
11	3-May-15	16-May-15	26-May-15	DC0	15	6206	9120F	1120F	Bryant Brown, Valerie C	18784	18642	5	209.85	
12	17-May-15	30-May-15	9-Jun-15	DC0	15	6206	9120F	1120F	Bryant Brown, Valerie C	18784	18642	5	209.86	
13	31-May-15	13-Jun-15	23-Jun-15	DC0	15	6206	9120F	1120F	Bryant Brown, Valerie C	18784	18642	10	419.70	
14	14-Jun-15	27-Jun-15	7-Jul-15	DC0	15	6206	9120F	1120F	Bryant Brown, Valerie C	18784	18642	12.5	619.06	
15	28-Jun-15	11-Jul-15	21-Jul-15	DC0	15	6206	9120F	1120F	Bryant Brown, Valerie C	18784	18642	11	482.66	
16	12-Jul-15	25-Jul-15	4-Aug-15	DC0	15	6206	9120F	1120F	Bryant Brown, Valerie C	18784	18642	7.5	314.78	
17	26-Jul-15	8-Aug-15	18-Aug-15	DC0	15	6206	9120F	1120F	Bryant Brown, Valerie C	18784	18642	5	209.85	
18	9-Aug-15	22-Aug-15	1-Sep-15	DC0	15	6206	9120F	1120F	Bryant Brown, Valerie C	18784	18642	7.5	314.78	
19	23-Aug-15	5-Sep-15	15-Sep-15	DC0	15	6206	9120F	1120F	Bryant Brown, Valerie C	18784	18642	12.5	577.09	

DCLB

OVTM RPT

Source: 485 Report

Date: 02-18-2016



**Attachment E**

**DC Lottery and Charitable Games Control Board  
Overtime Report  
FY 2015**

PP	PPB DT	PPE DT	PAY DT	AGY	AY	FUND	INDEX	PCA	NAME	EMPLID	POSITION	HR133	AMT133	OVTM-
21	20-Sep-15	3-Oct-15	13-Oct-15	DC0	16	6206	9120F	1120F	Bryant Brown, Valerie C	18784	18642	10	524.63	
23	19-Oct-14	1-Nov-14	10-Nov-14	DC0	15	6206	9120F	1120F	Bryant Brown, Valerie C	18784	18642	25	1,216.78	
24	2-Nov-14	15-Nov-14	25-Nov-14	DC0	15	6206	9120F	1120F	Bryant Brown, Valerie C	18784	18642	10	419.71	
25	16-Nov-14	29-Nov-14	9-Dec-14	DC0	15	6206	9120F	1120F	Bryant Brown, Valerie C	18784	18642	12.5	566.60	
26	30-Nov-14	13-Dec-14	23-Dec-14	DC0	15	6206	9120F	1120F	Bryant Brown, Valerie C	18784	18642	12.5	786.94	
									<b>Bryant Brown, Valerie C Total</b>			<b>238.5</b>	<b>11,048.33</b>	
1	14-Dec-14	27-Dec-14	6-Jan-15	DC0	15	6206	91010	10110	Bryant, Dionne	37786	78181	40	1,830.80	
26	30-Nov-14	13-Dec-14	23-Dec-14	DC0	15	6206	91010	10110	Bryant, Dionne	37786	78181	16	853.19	
									<b>Bryant, Dionne Total</b>			<b>56</b>	<b>2,683.99</b>	
1	14-Dec-14	27-Dec-14	6-Jan-15	DC0	15	6206	9120F	1120F	Collier, Clyde	73096	35223	7	286.99	
2	28-Dec-14	10-Jan-15	20-Jan-15	DC0	15	6206	9120F	1120F	Collier, Clyde	73096	35223	10	409.98	
3	11-Jan-15	24-Jan-15	3-Feb-15	DC0	15	6206	9120F	1120F	Collier, Clyde	73096	35223	12.5	512.48	
4	25-Jan-15	7-Feb-15	17-Feb-15	DC0	15	6206	9120F	1120F	Collier, Clyde	73096	35223	12.5	512.48	
5	8-Feb-15	21-Feb-15	3-Mar-15	DC0	15	6206	9120F	1120F	Collier, Clyde	73096	35223	10	409.98	
6	22-Feb-15	7-Mar-15	17-Mar-15	DC0	15	6206	9120F	1120F	Collier, Clyde	73096	35223	10	409.98	
7	8-Mar-15	21-Mar-15	31-Mar-15	DC0	15	6206	9120F	1120F	Collier, Clyde	73096	35223	5	204.99	
8	22-Mar-15	4-Apr-15	14-Apr-15	DC0	15	6206	9120F	1120F	Collier, Clyde	73096	35223	5	204.99	
10	19-Apr-15	2-May-15	12-May-15	DC0	15	6206	9120F	1120F	Collier, Clyde	73096	35223	5	204.99	
11	3-May-15	16-May-15	26-May-15	DC0	15	6206	9120F	1120F	Collier, Clyde	73096	35223	5	204.99	
12	17-May-15	30-May-15	9-Jun-15	DC0	15	6206	9120F	1120F	Collier, Clyde	73096	35223	7.5	307.49	
13	31-May-15	13-Jun-15	23-Jun-15	DC0	15	6206	9120F	1120F	Collier, Clyde	73096	35223	5	204.99	
15	28-Jun-15	11-Jul-15	21-Jul-15	DC0	15	6206	9120F	1120F	Collier, Clyde	73096	35223	5	204.99	

**Attachment E**

**DC Lottery and Charitable Games Control Board  
Overtime Report  
FY 2015**

PP	PPB DT	PPE DT	PAY DT	AGY	AY	FUND	INDEX	PCA	NAME	EMPLID	POSITION	HR133	AMT133	OVTM-
16	12-Jul-15	25-Jul-15	4-Aug-15	DC0	15	6206	9120F	1120F	Collier,Clyde	73096	35223	5	204.99	
17	26-Jul-15	8-Aug-15	18-Aug-15	DC0	15	6206	9120F	1120F	Collier,Clyde	73096	35223	5	211.36	
18	9-Aug-15	22-Aug-15	1-Sep-15	DC0	15	6206	9120F	1120F	Collier,Clyde	73096	35223	5	211.36	
19	23-Aug-15	5-Sep-15	15-Sep-15	DC0	15	6206	9120F	1120F	Collier,Clyde	73096	35223	5	211.36	
20	6-Sep-15	19-Sep-15	29-Sep-15	DC0	15	6206	9120F	1120F	Collier,Clyde	73096	35223	5	211.36	
21	20-Sep-15	3-Oct-15	13-Oct-15	DC0	16	6206	9120F	1120F	Collier,Clyde	73096	35223	5	211.36	
22	5-Oct-14	18-Oct-14	28-Oct-14	DC0	15	6206	9120F	1120F	Collier,Clyde	73096	35223	10	409.99	
23	19-Oct-14	1-Nov-14	10-Nov-14	DC0	15	6206	9120F	1120F	Collier,Clyde	73096	35223	15	614.97	
24	2-Nov-14	15-Nov-14	25-Nov-14	DC0	15	6206	9120F	1120F	Collier,Clyde	73096	35223	13	512.48	
26	30-Nov-14	13-Dec-14	23-Dec-14	DC0	15	6206	9120F	1120F	Collier,Clyde	73096	35223	32	1,311.94	
									<b>Collier,Clyde Total</b>			<b>199</b>	<b>8,190.49</b>	
3	11-Jan-15	24-Jan-15	3-Feb-15	DC0	15	6206	96400	10640	Edwards,Anthony L	31968	35382	2.5	88.87	
14	14-Jun-15	27-Jun-15	7-Jul-15	DC0	15	6206	96400	10640	Edwards,Anthony L	31968	35382	2.5	137.32	
18	9-Aug-15	22-Aug-15	1-Sep-15	DC0	15	6206	96400	10640	Edwards,Anthony L	31968	35382	5.5	302.11	
26	30-Nov-14	13-Dec-14	23-Dec-14	DC0	15	6206	96400	10640	Edwards,Anthony L	31968	35382	18	959.84	
									<b>Edwards,Anthony L Total</b>			<b>28.5</b>	<b>1,488.14</b>	
6	22-Feb-15	7-Mar-15	17-Mar-15	DC0	15	6206	96600	10660	Evans,Oliver	55625	28513	5	206.51	
7	8-Mar-15	21-Mar-15	31-Mar-15	DC0	15	6206	96600	10660	Evans,Oliver	55625	28513	3	123.34	
8	22-Mar-15	4-Apr-15	14-Apr-15	DC0	15	6206	96600	10660	Evans,Oliver	55625	28513	1	41.01	
9	5-Apr-15	18-Apr-15	28-Apr-15	DC0	15	6206	96600	10660	Evans,Oliver	55625	28513	5	204.26	
10	19-Apr-15	2-May-15	12-May-15	DC0	15	6206	96600	10660	Evans,Oliver	55625	28513	3	109.18	
13	31-May-15	13-Jun-15	23-Jun-15	DC0	15	6206	96600	10660	Evans,Oliver	55625	28513	4	108.22	



Attachment E

DC Lottery and Charitable Games Control Board  
Overtime Report  
FY 2015

PP	PPB DT	PPE DT	PAY DT	AGY	AY	FUND	INDEX	PCA	NAME	EMPLID	POSITION	HR133	AMT133	OVTM-
18	9-Aug-15	22-Aug-15	1-Sep-15	DC0	15	6206	96600	10660	Evans, Oliver	55625	28513	3	123.16	
19	23-Aug-15	5-Sep-15	15-Sep-15	DC0	15	6206	96600	10660	Evans, Oliver	55625	28513	2	68.42	
23	19-Oct-14	1-Nov-14	10-Nov-14	DC0	15	6206	96600	10660	Evans, Oliver	55625	28513	13	521.55	
25	16-Nov-14	29-Nov-14	9-Dec-14	DC0	15	6206	96600	10660	Evans, Oliver	55625	28513	7	231.39	
26	30-Nov-14	13-Dec-14	23-Dec-14	DC0	15	6206	96600	10660	Evans, Oliver	55625	28513	6	246.15	
<b>Evans, Oliver Total</b>													<b>52</b>	<b>1,983.19</b>
3	11-Jan-15	24-Jan-15	3-Feb-15	DC0	15	6206	96600	10660	Fair, Andre L.	43766	21655	2	47.41	
4	25-Jan-15	7-Feb-15	17-Feb-15	DC0	15	6206	96600	10660	Fair, Andre L.	43766	21655	6	213.35	
5	8-Feb-15	21-Feb-15	3-Mar-15	DC0	15	6206	96600	10660	Fair, Andre L.	43766	21655	4	94.82	
6	22-Feb-15	7-Mar-15	17-Mar-15	DC0	15	6206	96600	10660	Fair, Andre L.	43766	21655	10	355.59	
9	5-Apr-15	18-Apr-15	28-Apr-15	DC0	15	6206	96600	10660	Fair, Andre L.	43766	21655	5	177.79	
10	19-Apr-15	2-May-15	12-May-15	DC0	15	6206	96600	10660	Fair, Andre L.	43766	21655	2	71.12	
12	17-May-15	30-May-15	9-Jun-15	DC0	15	6206	96600	10660	Fair, Andre L.	43766	35047	2	50.69	
13	31-May-15	13-Jun-15	23-Jun-15	DC0	15	6206	96600	10660	Fair, Andre L.	43766	35047	3	114.05	
20	6-Sep-15	19-Sep-15	29-Sep-15	DC0	15	6206	96600	10660	Fair, Andre L.	43766	35047	4	101.38	
22	5-Oct-14	18-Oct-14	28-Oct-14	DC0	15	6206	96600	10660	Fair, Andre L.	43766	21655	15	414.85	
23	19-Oct-14	1-Nov-14	10-Nov-14	DC0	15	6206	96600	10660	Fair, Andre L.	43766	21655	8	284.47	
24	2-Nov-14	15-Nov-14	25-Nov-14	DC0	15	6206	96600	10660	Fair, Andre L.	43766	21655	10	337.81	
25	16-Nov-14	29-Nov-14	9-Dec-14	DC0	15	6206	96600	10660	Fair, Andre L.	43766	21655	16	521.52	
26	30-Nov-14	13-Dec-14	23-Dec-14	DC0	15	6206	96600	10660	Fair, Andre L.	43766	21655	32	1,137.88	
<b>Fair, Andre L. Total</b>													<b>118.5</b>	<b>3,922.73</b>
1	14-Dec-14	27-Dec-14	6-Jan-15	DC0	15	6206	96300	10630	Hicks, Jamal S.	14043	51135	4	(138.77)	

**Attachment E**

**DC Lottery and Charitable Games Control Board  
Overtime Report  
FY 2015**

PP	PPB DT	PPE DT	PAY DT	AGY	AY	FUND	INDEX	PCA	NAME	EMPLID	POSITION	HR133	AMT133	OVTM-
26	30-Nov-14	13-Dec-14	23-Dec-14	DC0	15	6206	96300	10630	Hicks,Jamal S.	14043	51135	4	138.77	
									<b>Hicks,Jamal S. Total</b>			<b>0</b>	<b>-</b>	
8	22-Mar-15	4-Apr-15	14-Apr-15	DC0	15	6206	96700	10670	Malone,Cheryl S	26866	26689	1	31.45	
									<b>Malone,Cheryl S Total</b>			<b>1</b>	<b>31.45</b>	
1	14-Dec-14	27-Dec-14	6-Jan-15	DC0	15	6206	91030	10130	Mason,Sean	38398	7286	40	2,015.50	
6	22-Feb-15	7-Mar-15	17-Mar-15	DC0	15	6206	91030	10130	Mason,Sean	38398	7286	3	116.28	
7	8-Mar-15	21-Mar-15	31-Mar-15	DC0	15	6206	91030	10130	Mason,Sean	38398	7286	4	232.56	
12	17-May-15	30-May-15	9-Jun-15	DC0	15	6206	91030	10130	Mason,Sean	38398	7286	2	77.52	
13	31-May-15	13-Jun-15	23-Jun-15	DC0	15	6206	91030	10130	Mason,Sean	38398	7286	12.5	726.75	
14	14-Jun-15	27-Jun-15	7-Jul-15	DC0	15	6206	91030	10130	Mason,Sean	38398	7286	15	872.10	
15	28-Jun-15	11-Jul-15	21-Jul-15	DC0	15	6206	91030	10130	Mason,Sean	38398	7286	10	426.36	
16	12-Jul-15	25-Jul-15	4-Aug-15	DC0	15	6206	91030	10130	Mason,Sean	38398	7286	5	193.80	
17	26-Jul-15	8-Aug-15	18-Aug-15	DC0	15	6206	91030	10130	Mason,Sean	38398	7286	10	465.12	
18	9-Aug-15	22-Aug-15	1-Sep-15	DC0	15	6206	91030	10130	Mason,Sean	38398	7286	7.5	397.29	
19	23-Aug-15	5-Sep-15	15-Sep-15	DC0	15	6206	91030	10130	Mason,Sean	38398	7286	7.5	298.72	
20	6-Sep-15	19-Sep-15	29-Sep-15	DC0	15	6206	91030	10130	Mason,Sean	38398	7286	7.5	298.72	
21	20-Sep-15	3-Oct-15	13-Oct-15	DC0	16	6206	91030	10130	Mason,Sean	38398	7286	7.5	448.08	
26	30-Nov-14	13-Dec-14	23-Dec-14	DC0	15	6206	91030	10130	Mason,Sean	38398	7286	24	1,298.45	
									<b>Mason,Sean Total</b>			<b>155.5</b>	<b>7,867.25</b>	
1	14-Dec-14	27-Dec-14	6-Jan-15	DC0	15	6206	96400	10640	Nestore,Julia L	18726	18583	5.25	188.62	
23	19-Oct-14	1-Nov-14	10-Nov-14	DC0	15	6206	96400	10640	Nestore,Julia L	18726	18583	3	98.80	
									<b>Nestore,Julia L Total</b>			<b>8</b>	<b>287.42</b>	



**Attachment E**

**DC Lottery and Charitable Games Control Board  
Overtime Report  
FY 2015**

PP	PPB DT	PPE DT	PAY DT	AGY	AY	FUND	INDEX	PCA	NAME	EMPLID	POSITION	HR133	AMT133	OVTM-
1	14-Dec-14	27-Dec-14	6-Jan-15	DC0	15	6206	96600	10660	Ogungbemi,Jubril John	14331	14216	35	2,117.13	
5	8-Feb-15	21-Feb-15	3-Mar-15	DC0	15	6206	96600	10660	Ogungbemi,Jubril John	14331	14216	3	181.47	
24	2-Nov-14	15-Nov-14	25-Nov-14	DC0	15	6206	96600	10660	Ogungbemi,Jubril John	14331	14216	6	362.94	
25	16-Nov-14	29-Nov-14	9-Dec-14	DC0	15	6206	96600	10660	Ogungbemi,Jubril John	14331	14216	3	181.47	
26	30-Nov-14	13-Dec-14	23-Dec-14	DC0	15	6206	96600	10660	Ogungbemi,Jubril John	14331	14216	50	3,024.47	
									<b>Ogungbemi,Jubril John Total</b>			<b>97</b>	<b>5,867.48</b>	
8	22-Mar-15	4-Apr-15	14-Apr-15	DC0	15	6206	96600	10660	Purnell,Tracy D	22571	36296	5.5	302.11	
9	5-Apr-15	18-Apr-15	28-Apr-15	DC0	15	6206	96600	10660	Purnell,Tracy D	22571	36296	5.5	302.11	
22	5-Oct-14	18-Oct-14	28-Oct-14	DC0	15	6206	96600	10660	Purnell,Tracy D	22571	36296	12	512.68	
									<b>Purnell,Tracy D Total</b>			<b>23</b>	<b>1,116.90</b>	
1	14-Dec-14	27-Dec-14	6-Jan-15	DC0	15	6206	91010	10110	Ray,Jonah T	78120	77963	46	1,922.67	
4	25-Jan-15	7-Feb-15	17-Feb-15	DC0	15	6206	91010	10110	Ray,Jonah T	78120	77963	5	208.99	
7	8-Mar-15	21-Mar-15	31-Mar-15	DC0	15	6206	91010	10110	Ray,Jonah T	78120	77963	4	167.19	
10	19-Apr-15	2-May-15	12-May-15	DC0	15	6206	91010	10110	Ray,Jonah T	78120	77963	3	125.39	
12	17-May-15	30-May-15	9-Jun-15	DC0	15	6206	91010	10110	Ray,Jonah T	78120	77963	3	125.39	
22	5-Oct-14	18-Oct-14	28-Oct-14	DC0	15	6206	91010	10110	Ray,Jonah T	78120	77963	5	119.34	
23	19-Oct-14	1-Nov-14	10-Nov-14	DC0	15	6206	91010	10110	Ray,Jonah T	78120	77963	(0)	(5.97)	
26	30-Nov-14	13-Dec-14	23-Dec-14	DC0	15	6206	91010	10110	Ray,Jonah T	78120	77963	17	710.56	
									<b>Ray,Jonah T Total</b>			<b>82.75</b>	<b>3,373.56</b>	
1	14-Dec-14	27-Dec-14	6-Jan-15	DC0	15	6206	96600	10660	Samuel,Anthony	5635	32785	42	2,350.99	
5	8-Feb-15	21-Feb-15	3-Mar-15	DC0	15	6206	96600	10660	Samuel,Anthony	5635	32785	11	615.74	
6	22-Feb-15	7-Mar-15	17-Mar-15	DC0	15	6206	96600	10660	Samuel,Anthony	5635	32785	17	1,427.39	

**Attachment E**

**DC Lottery and Charitable Games Control Board  
Overtime Report  
FY 2015**

PP	PPBD DT	PPE DT	PAY DT	AGY	AY	FUND	INDEX	PCA	NAME	EMPLID	POSITION	HR133	AMT133	OVTM-
18	9-Aug-15	22-Aug-15	1-Sep-15	DC0	15	6206	96600	10660	Samuel,Anthony	5635	32785	8	671.71	
24	2-Nov-14	15-Nov-14	25-Nov-14	DC0	15	6206	96600	10660	Samuel,Anthony	5635	32785	6	335.86	
25	16-Nov-14	29-Nov-14	9-Dec-14	DC0	15	6206	96600	10660	Samuel,Anthony	5635	32785	23	1,287.45	
26	30-Nov-14	13-Dec-14	23-Dec-14	DC0	15	6206	96600	10660	Samuel,Anthony	5635	32785	55	3,078.68	
<b>Samuel,Anthony Total</b>												<b>162</b>	<b>9,767.82</b>	
1	14-Dec-14	27-Dec-14	6-Jan-15	DC0	15	6206	91040	10140	Scott,Debra C	28304	51221	12	465.12	
2	28-Dec-14	10-Jan-15	20-Jan-15	DC0	15	6206	91040	10140	Scott,Debra C	28304	51221	8	310.08	
3	11-Jan-15	24-Jan-15	3-Feb-15	DC0	15	6206	91040	10140	Scott,Debra C	28304	51221	16	620.16	
4	25-Jan-15	7-Feb-15	17-Feb-15	DC0	15	6206	91040	10140	Scott,Debra C	28304	51221	16	620.16	
5	8-Feb-15	21-Feb-15	3-Mar-15	DC0	15	6206	91040	10140	Scott,Debra C	28304	51221	12	465.12	
6	22-Feb-15	7-Mar-15	17-Mar-15	DC0	15	6206	91040	10140	Scott,Debra C	28304	51221	8	310.08	
7	8-Mar-15	21-Mar-15	31-Mar-15	DC0	15	6206	91040	10140	Scott,Debra C	28304	51221	8	310.08	
8	22-Mar-15	4-Apr-15	14-Apr-15	DC0	15	6206	91040	10140	Scott,Debra C	28304	51221	4	193.80	
23	19-Oct-14	1-Nov-14	10-Nov-14	DC0	15	6206	91040	10140	Scott,Debra C	28304	51221	12	562.02	
24	2-Nov-14	15-Nov-14	25-Nov-14	DC0	15	6206	91040	10140	Scott,Debra C	28304	51221	16	775.20	
25	16-Nov-14	29-Nov-14	9-Dec-14	DC0	15	6206	91040	10140	Scott,Debra C	28304	51221	8	310.08	
26	30-Nov-14	13-Dec-14	23-Dec-14	DC0	15	6206	91040	10140	Scott,Debra C	28304	51221	20	1,007.75	
<b>Scott,Debra C Total</b>												<b>140</b>	<b>5,949.65</b>	
<b>Wong,Gordon Total</b>												<b>32</b>	<b>1,935.66</b>	
22	5-Oct-14	18-Oct-14	28-Oct-14	DC0	15	6206	91040	10140	Wong,Gordon	56142	5466	32	1,935.66	
<b>Grand Total</b>												<b>1407</b>	<b>66,018.22</b>	



**Attachment F  
Contracts**

	A	B	C	D	E	F	G	H	I	J	K	L
	Contract#	Vendor Name	Description	Exec. Date	Term	Exp. Date	Base Value	Current Value	Cumulative Value	Major Agy	Contract Specialist	Award
2	CFOPD-10-C-038	Intralot	Lottery Gaming System	03/30/10	base + 5	03/29/15	NTE \$38,000,000	38,000,000.00	\$ 76,105,576.00	DCLB	Dorothy Whisler	Competitive
3	CFOPD-11-C-019	MDB Communications	Advertising Services For DCLB	12/04/10	Base +4 years	02/24/16	6,000,000.00	\$990,000.00	\$ 31,761,050.00	DCLB	Anthony Stover	Competitive
4	CFOPD-11-C-020	MS Technologies	DC Lottery (lot -line)	02/10/11	Base +4 years	06/30/16	207,988.00	\$35,000.00	\$621,688.00	DCLB	Vanessa Bennett	Competitive
5	CFOPD-11-C-054	Watkins Security	Security Services	09/30/11	4 Years	09/29/16	\$481,189.44	\$531,048.96	\$2,259,157.44	DCLB	Anthony Stover	Competitive
6	CFOPD-12-C-015	Scientific Games International, Inc	Computerized Draw	02/02/12	Base+4	07/31/16	NTE \$244,776.00	\$51,000.00	\$1,000,776.00	DCLB	Anthony Stover	Competitive
7	CFOPD-14-C-027	Charles Ryan Associates	Web Design and Development	09/30/14	Base + 4 Years	09/29/16	\$246,875.00	\$244,375.00	\$491,250.00	DCLB	Anthony Stover	Competitive
8	CFOPD-15-C-006	F. S. Taylor & Associates	Auditing Daily Lottery Services	03/17/15	Base + 4 Years	03/16/15	\$207,150.00	\$207,150.00	\$207,150.00	DCLB	Anthony Stover	Competitive
9	CFOPD-16-C-004	Veterans Services Corporation	Lottery Retail Enhancement	10/21/15	Base + 4 years	10/20/16	\$740,000.00	\$740,000.00	\$740,000.00	DCLB	Anthony Stover	Set Aside
10	CFOPD-15-C-022	Metropolitan Service	DCLB Warehouse Services	03/24/15	Base + 4 years	03/23/16	\$259,072.00	\$259,072.00	\$259,072.00	DCLB	Anthony Stover	Set Aside
11	CFOPD-15-C-017	Delehanly Consulting LLC	DCLB Best Practices	08/07/15	Base + 4 years	08/06/16	\$180,000.00	\$180,000.00	\$180,000.00	DCLB	Crystal Farmer	Competitive
12	CFOPD-15-C-024	M. Jones Companies	Mobile Vendor	09/01/15	Base 1Yr + 4, 1 Yr.	08/31/16	\$127,695.00	\$127,695.00	\$127,695.00	DCLB	Yemashet Kebede	Competitive
13	CFOPD-15-C-014	GTECH	Instant Ticket Manufacturing Services	12/02/14	Base 1Yr + 2, 2 Yr.	12/01/16	NTE \$980,000.00	NTE \$500,000.00	NTE \$1,480,000.00	DCLB	Anthony Stover	Exempt
14	CFOPD-15-C-014A	Pollard Banknote	Instant Ticket Manufacturing Services	04/09/15	Base 1Yr + 4, 1 Yr.	04/08/16	NTE \$980,000.00	NTE \$980,000.00	NTE \$980,000.00	DCLB	Anthony Stover	Exempt
15	CFOPD-15-C-014B	Scientific Games International, Inc	Instant Ticket Manufacturing Services	12/23/14	Base 1Yr + 4, 1 Yr.	12/22/16	NTE \$980,000.00	NTE \$980,000.00	NTE \$1,960,000.00	DCLB	Anthony Stover	Exempt
16	CFOPD-15-C-025	Strong Production LLC	Retail Recruitment	09/11/15	Base 1Yr + 4, 1 Yr.	09/10/16	\$250,000.00	\$250,000.00	\$250,000.00	DCLB	Yemashet Kebede	Competitive



Attachment G  
RFP's

A	B	C	D	E	F	G	H	I	J	K	L
Contract#	Vendor Name	Description	Exec. Date	Term	Exp. Date	Base Value	Current Value	Cumulative Value	Major Agy	Contract Specialist	Award
19	CFOPD-16-R-016	TBD	Lottery Advertising Services	TBD	Base + 4 Years	TBD	\$6,537,000.00	\$6,537,000.00	DCLB	Carla Roane	Competitive
20	CFOPD-16-R-017	TBD	IVR System (Lotline)	TBD	Base 1yr + 4, 1 yr.	TBD	\$110,000.00	\$110,000.00	DCLB	Carla Roane	Competitive
21	CFOPD-16-R-018	TBD	Lottery Draw Services	TBD	Base 1yr + 4, 1 yr.	TBD	\$ 100,000.00	\$ 100,000.00	DCLB	Carla Roane	Competitive
22	TBD	TBD	Public Relations	TBD	TBD	TBD	\$30,000.00	\$30,000.00	DCLB	Carla Roane	Competitive
23	CFOPD-16-R-0XX	TBD	Security Services	TBD	Base 1yr + 4, 1 yr.	TBD	\$500,000.00	\$500,000.00	DCLB	TBD	Competitive
24	CFOPD-16-R-0XX	TBD	Customer Service Management System	TBD	Base 1yr + 4, 1 yr.	TBD	TBD	TBD	DCLB	TBD	Competitive

Attachment H  
*Electronic Databases*

Name	Description	Age in Years	Upgrades?	Public Access?
Computerized Gaming System	Contains lottery's players wagers and validations	6 years	5 year contract	Partial public access through self-service terminals
Back Office System (BOS)	Contains the data reporting portion of the computerized Gaming System.	6 years	5 year contract	Not available to public
Back Office System partial backups	Contains partial backup to BOS for data inquiries from outside parties.	4 years	No plan to replace	Partial public access through FOIA.
Internal Control System	Contains sales, payments and agent commissions for verification and validation	6 years	No plans to replace	Not available to public
Interactive Voice Response	Contains winning numbers and jackpot information to public via telephone, website and SMS texts	6 years	To be replaced, last year of contract	Public access
Oracle GL	General Ledger accounting system contains revenue and expense data	13 years	Upgrade in process.	Not available to public
Agent Management	Contains lottery retailer data	6 years	No plans to replace	Partial public access provided through website
Sales Rollup - Retailer Sales Analysis	Contains lottery retailer sales and commissions, and lottery sales liability data	8 years	Plan to replace with Cognos and Sales Force Automation	Not available to public
Investigations	Contains security incident analysis and investigations data	8 years	No plans to replace	Not available to public
Customer Complaints	Customer Service data	8 years	No plans to replace	Not available to public
Automated Claims Processing	Contains winning ticket claims data	8 years	No plans to replace	Not available to public
Agent License	Contain retailer licensing information	8 years	No plans to replace	Not available to public
Charitable Game Event data	Contain licensing data for Charitable Game Events	8 years	No plans to replace	Not available to public

Attachment I  
*Rules and Regulations*

**TILE 30**  
**DISTRICT OF COLUMBIA MUNICIPAL REGULATIONS**  
**LOTTERY AND CHARITABLE GAMES CONTROL BOARD**

Chapter	Title	Date of Last Amendment	Summary of FY15 Amendments
2	Lottery Licenses	September 2015	Section 208 (pertaining to “Instant Ticket Distribution Center Licenses”) was repealed. Now Instant tickets are distributed to retailers only .from the DC Lottery’s warehouse using a CBE vendor.
3	Agent Requirements	May 2013	
4	Hearings	December 2003	
5	General Provisions	October 2014	
6	Claims and Prize Payments	October 2014	
7	Instant Games	March 2015	Chapter 30-7 was amended to update Instant Ticket game procedures.
8	On-Line Games	October 1993	
9	Description of On-Line Games	October 2015	The rules were amended to make matrix changes to Powerball and to include rules for the new Lucky for Life Game.
10	Other Games	October 1993	
12	Bingo, Raffle, Monte Carlo Night Party and Suppliers' License	October 2015	The rules relating to financial security for the member-in charge were amended to ensure compliance with D.C. Official Code § 3-1325.
13	Bingo, Raffle and Monte Carlo Night Party Personnel	May 1988	
14	Bingo Operations	April 1991	
15	Raffles	October 2015	Rules pertaining to 50/50 Raffles were amended to allow licensed organizations to conduct more licensed events and to reduce the fees associated with event licenses.
16	Monte Carlo Night Parties	May 2006	
17	Prohibited Acts	May 1988	

\*Chapter 1 (Organization of the Lottery and Charitable Games Control Board) and chapters 20-25 (relating to Lottery Board Procurements) are in the process of being repealed because they are no longer relevant to the operation of the DC Lottery.