

Exhibit 210

Message

From: RC Lindner [/O=COLONIAL PARKING, INC./OU=HQ/CN=RECIPIENTS/CN=RUSTY]
Sent: 5/19/2015 7:54:14 PM
To: jackevans1@[REDACTED]
Subject: Parking tax exhibits
Attachments: 5_18_15_Forge_Charts.docx

Jackson, here you go. Please note that in Graph 1, I used a “lower end of the range” to reflect reports that 23% of fines go uncollected. This may be overly conscientious on my part, and I can easily revise to eliminate the discounted number and simply show a single one. Again, these rates only reflect parity with suburban competitors; if DC’s fines are higher, we enjoy greater revenues.

Interesting frame of reference: Detroit just increased its meter violation charge from \$25 to \$40. Detroit!!

Rusty

Potential New Revenues if the District of Columbia Imposed Comparable Fines for On-Street Parking Meter and Residential Permit Parking Violations

Jurisdiction	Off Street Parking Tax Rate	On-Street Parking Meters		Residential Permit Parking Zone	
		Fine for Violation	Potential Revenue if DC Imposed Comparable Fine*	Fine for Violation	Potential Revenue if DC Imposed Comparable Fine**
Alexandria	0%	\$40.00	\$3,719,100 - \$4,830,000	\$40.00	\$1,463,000 - \$1,900,000
Rosslyn - Ballston (Arlington)	0%	35.00	\$2,479,400 - \$3,220,000	50.00	\$2,926,000 - \$3,800,000
Bethesda (Montgomery County)	0%	45.00	\$4,958,800 - \$6,440,000	50.00	\$2,926,000 - \$3,800,000
District of Columbia	18%	25.00	---	30.00	---

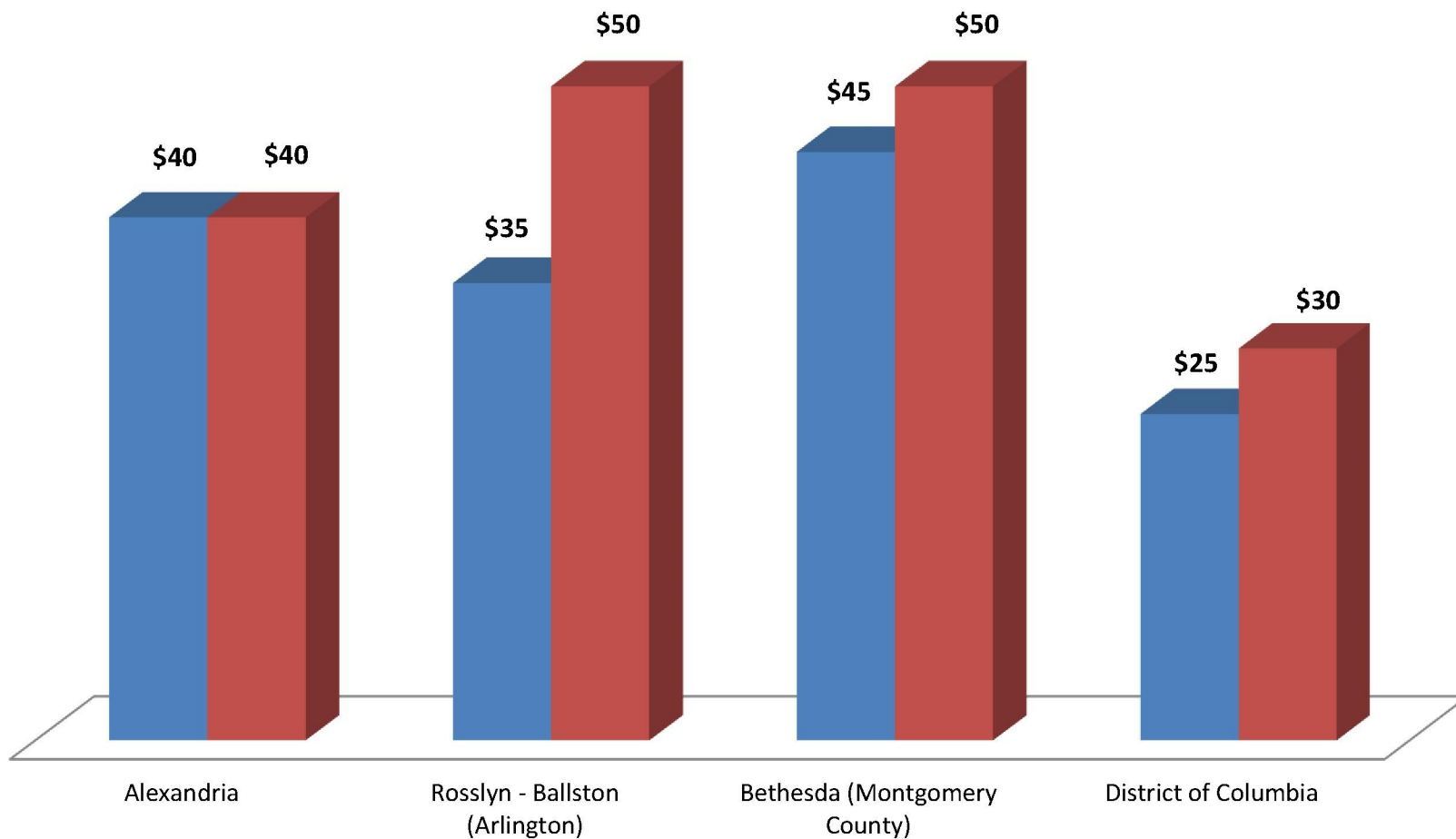
*Based on Fiscal Year 2012 total of 322,000 tickets issued for parking meter violations.

**Based on Fiscal Year 2012 total of 190,000 tickets issued for residential parking violations.

Note: Low end of potential revenue range calculated using the Fiscal Year 2013 unpaid ticket rate of 23 percent.

Fines for Parking Meter and Residential Permit Parking Violations in the Washington Metropolitan Region

■ On-Street Parking Meters ■ Residential Permit Parking Zone



Jurisdiction	Lapsed Meter Penalty	Penalty in Residential Parking Permit Zone
District of Columbia	\$25.00	\$30.00
Alexandria	40.00	40.00
Arlington	35.00	50.00
Montgomery County (Bethesda)	45.00	50.00
New York City	65.00	NYC does not issue residential parking permits
Chicago	65.00	75.00
Philadelphia	36.00	---
Baltimore	30.00	50.00
Atlanta	35.00	25.00
Detroit	45.00	45.00

Jurisdiction	Central Business District Parking Rates (per hour)	Lapsed Meter Penalty	Residential Parking Violation
District of Columbia	\$2.00	\$25.00	\$30.00
Alexandria	1.25	40.00	40.00
Arlington	1.25	35.00	50.00
Montgomery County (Bethesda)	2.00	45.00	50.00
New York City	3.50	65.00	---
Chicago	4.00	65.00	75.00
Philadelphia	2.50	36.00	---
Baltimore	2.00	30.00	50.00
Atlanta	2.00	35.00	25.00

Los Angeles
San Francisco
Seattle
Pittsburgh

10%
25%
12.50%
40%

Jurisdiction	Lapsed Meter Penalty	Gross <u>New</u> Revenue Earned by Aligning DC's Lapsed Meter Penalty with Jurisdiction (FY12 = 322,000 Tickets Issued)	Adjustment for Unpaid Tickets (FY13 Delinquency rate of 23%)
Alexandria	\$40.00	\$4,830,000	\$3,719,100
Arlington	35.00	3,220,000	2,479,400
Montgomery County (Bethesda)	45.00	6,440,000	4,958,800
New York City	65.00	12,880,000	9,917,600
Chicago	65.00	12,880,000	9,917,600
Philadelphia	36.00	3,542,000	2,727,340
Detroit	45.00	6,440,000	4,958,800

Jurisdiction	Penalty in Residential Permit Parking Zone	Gross <u>New</u> Revenue Earned by Aligning DC's RPP Penalty with Jurisdiction (FY12 = 190,000 Tickets Issued)	Adjustment for Unpaid Tickets (FY13 Delinquency rate of 23%)
Alexandria	\$40.00	\$1,900,000	\$1,463,000
Arlington	50.00	3,800,000	2,926,000
Montgomery County (Bethesda)	50.00	3,800,000	2,926,000
New York City	---	---	---
Chicago	75.00	8,550,000	6,583,500
Philadelphia	---	---	---
Detroit	45.00	2,850,000	2,194,500

Jurisdiction	Off Street Parking Tax Rate	On-Street Parking Meters		Residential Permit Parking Zone	
		Fine for Violation	Potential Revenue if DC Imposed Comparable Fine*	Fine for Violation	Potential Revenue if DC Imposed Comparable Fine**
Alexandria	0%	\$40.00	\$3,719,100	\$40.00	\$1,463,000
Rosslyn - Ballston (Arlington)	0%	35.00	2,479,400	50.00	2,926,000
Bethesda (Montgomery County)	0%	45.00	4,958,800	50.00	2,926,000
District of Columbia	18%	25.00	---	30.00	---

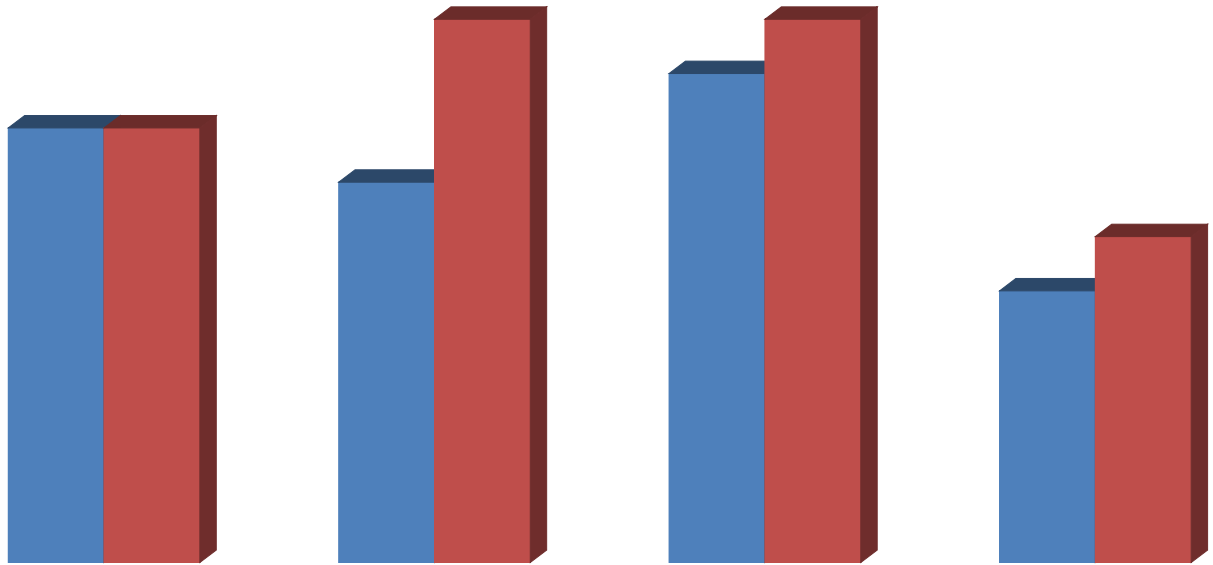
*Based on Fiscal Year 2012 total of 322,000 tickets issued for parking meter violations.

**Based on Fiscal Year 2012 total of 190,000 tickets issued for residential parking violations.

Note: Figures are adjusted to account for unpaid parking tickets using the Fiscal Year 2013 unpaid ticket rate of 23 percent.

Fines for Parking Meter and Residential Permit Parking Violations in the Washington Metropolitan Region

■ On-Street Parking Meters ■ Residential Permit Parking Zone



Alexandria

Rosslyn - Ballston (Arlington)

Bethesda (Montgomery County)

District of Columbia

Off Street Parking Tax Rates in the Washington Metropolitan Region

