

CORONAVIRUS

(COVID-19)

Situational Update

Friday, April 3, 2020

[CORONAVIRUS.DC.GOV](https://coronavirus.dc.gov)



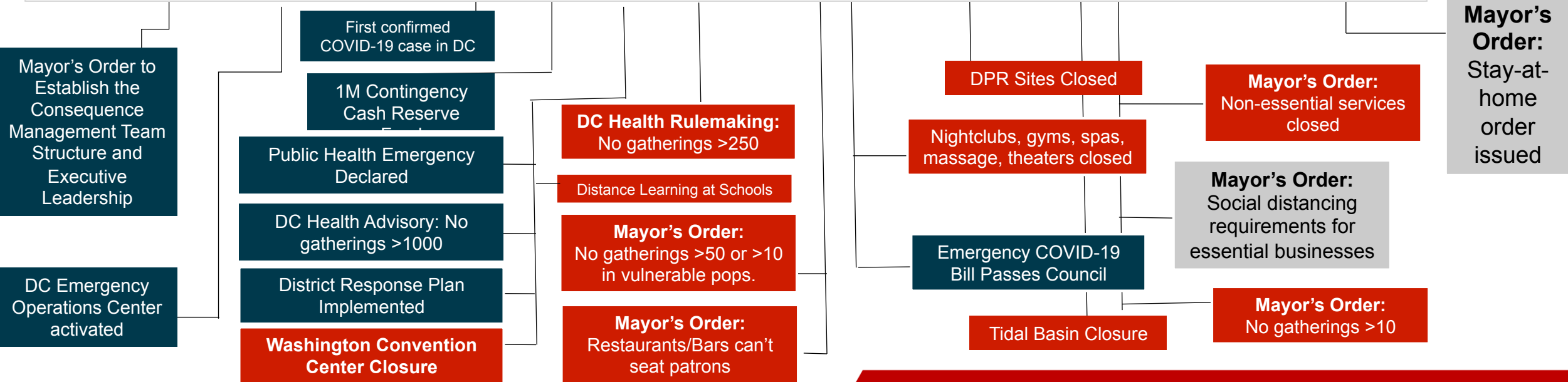
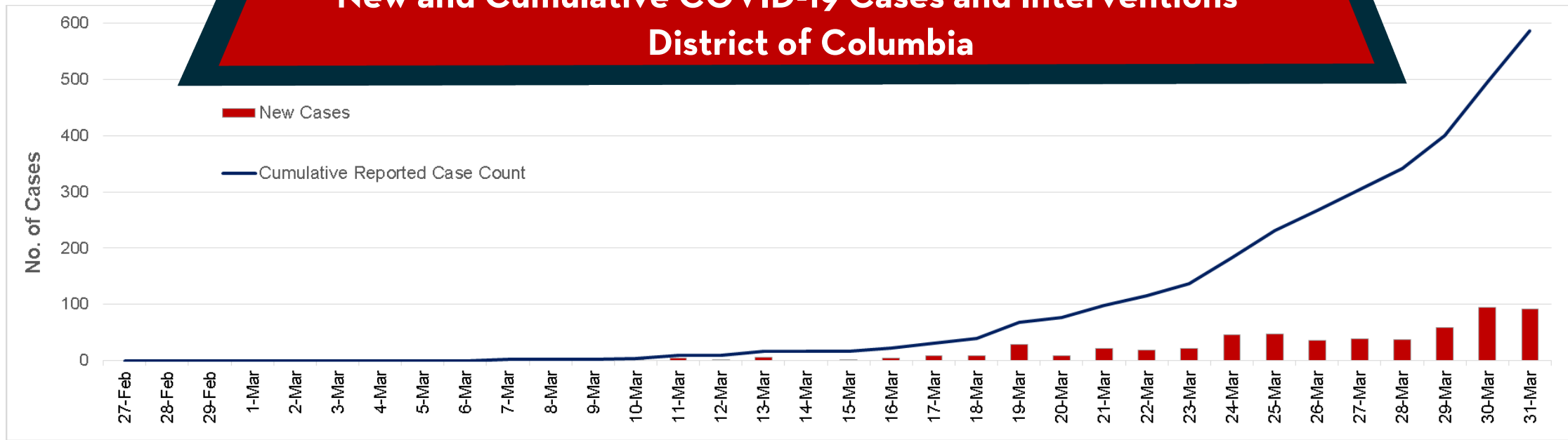
DC | HEALTH
GOVERNMENT OF THE DISTRICT OF COLUMBIA

WE ARE
WASHINGTON
GOVERNMENT OF THE
DISTRICT OF COLUMBIA
DC MURIEL BOWSER, MAYOR

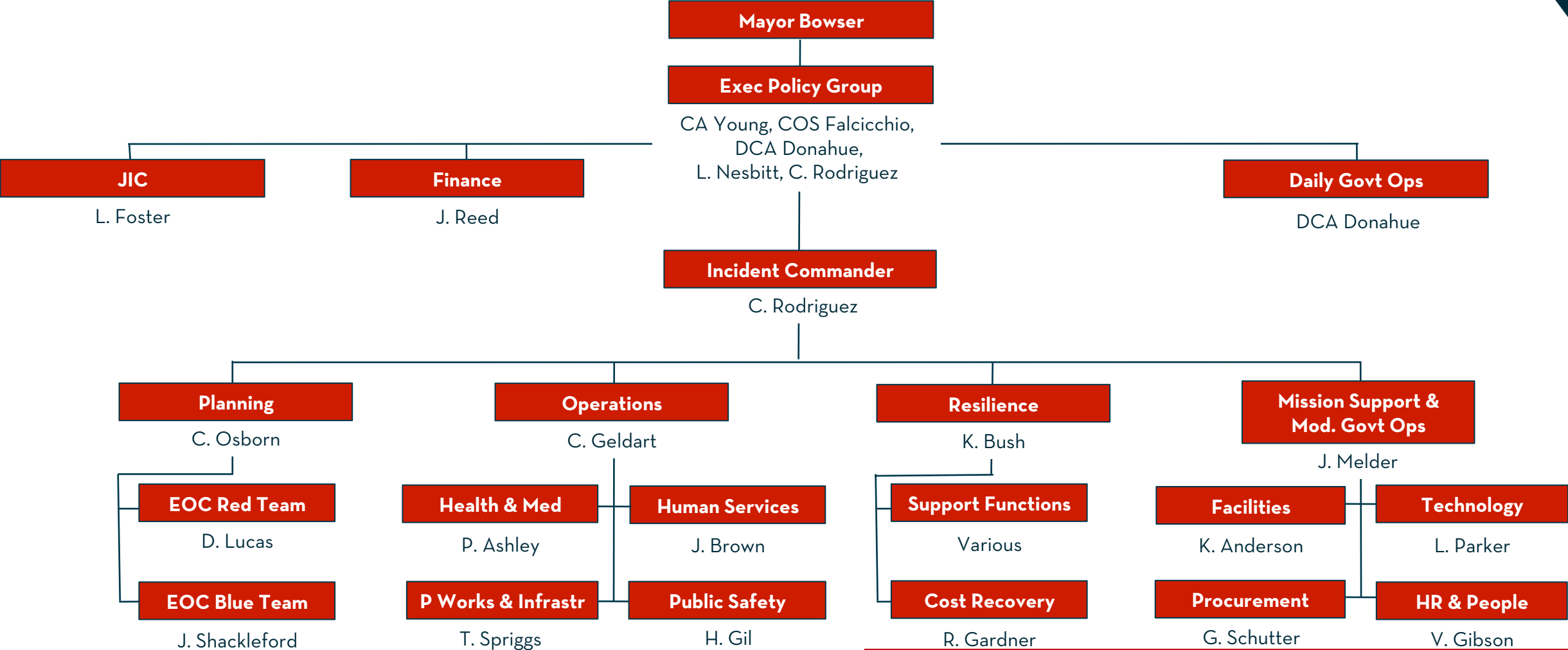
Where We Are Today



New and Cumulative COVID-19 Cases and Interventions District of Columbia



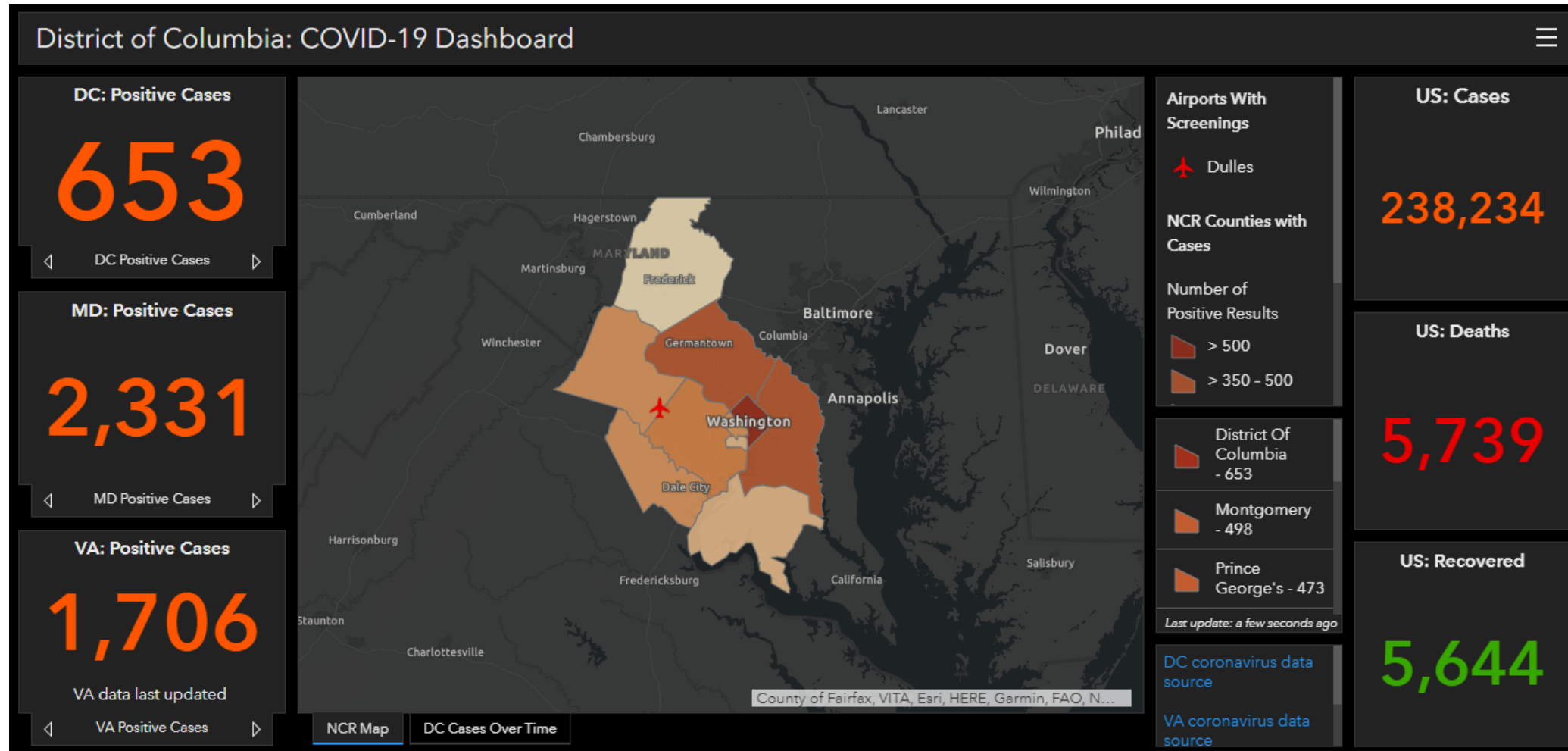
District Response Org Chart



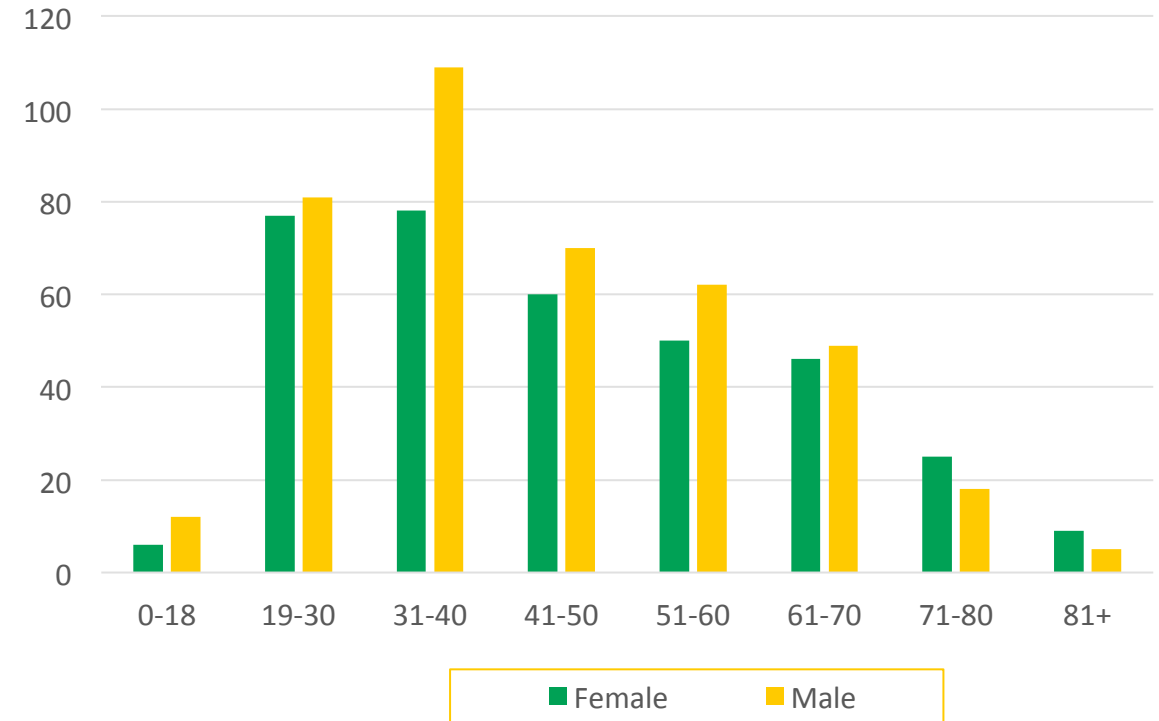
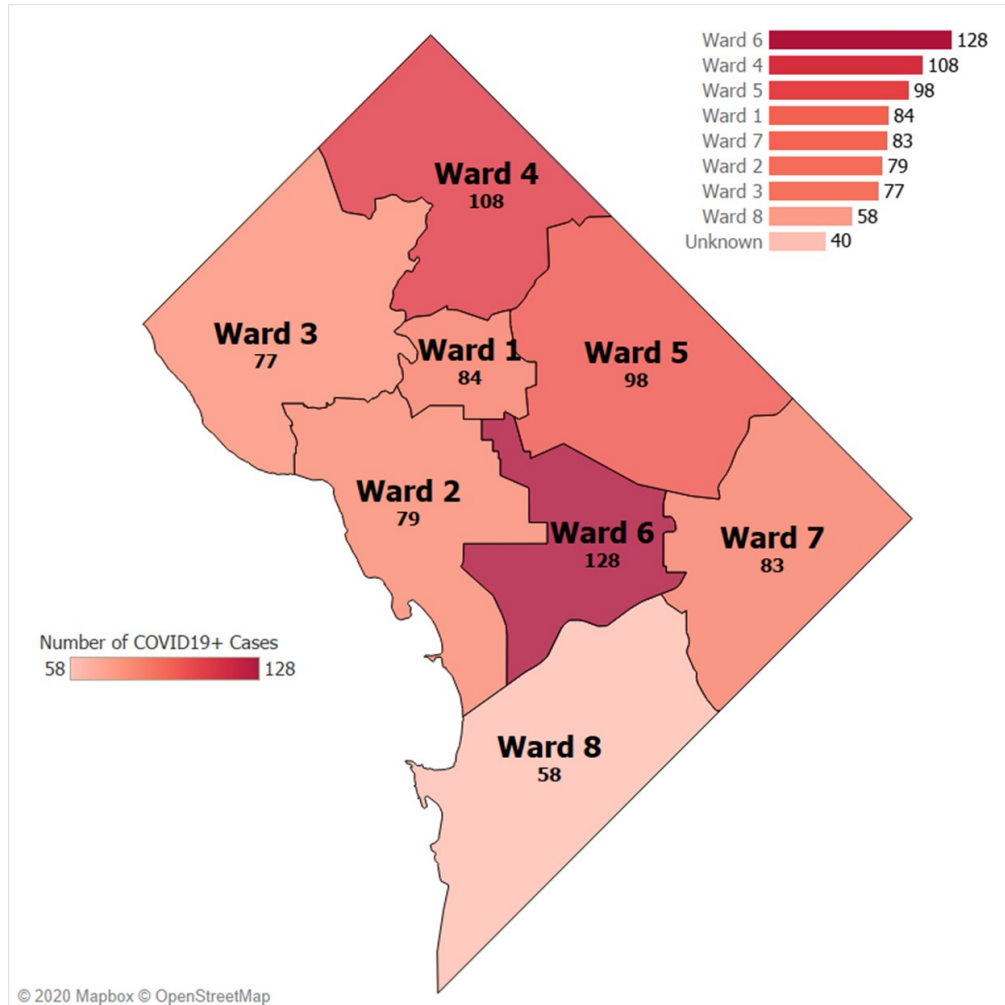
COVID-19 Response Emergency Amendment Act of 2020

KEY LEGISLATIVE PROVISIONS	SUMMARY OF REQUIREMENTS
UNEMPLOYMENT INSURANCE	<ul style="list-style-type: none">• Extends unemployment compensation to those unemployed due to COVID-19
PUBLIC BENEFITS & PROTECTIONS FOR RESIDENTS	<ul style="list-style-type: none">• Prohibits evictions of residential and commercial tenants as well as late fees, and prohibits utility shut-offs for non-payment.• Extends public benefit programs such as the Healthcare Alliance, TANF, and SNAP. Places limits on price gouging and stockpiling.
SUPPORT FOR LOCAL BUSINESSES	<ul style="list-style-type: none">• Creates a small business grant program to assist nonprofit organizations and small contractors.• Allows for delivery and carry-out sales by restaurants of beer/wine, if sold along with prepared food.• Delays retail sales tax payments to the government by stores, restaurants, and other businesses.
CONTINUITY OF OPERATIONS	<ul style="list-style-type: none">• Extends deadlines/expiration of corporate tax filings, drivers licenses, professional licenses, etc.• Allows the Council to meet virtually.• Provides meeting flexibility to ANC's, boards, and commissions.• Allows flexibility in FOIA and Open Meetings.• Delays the submission date for the Mayor's budget to May 6.

Regional Outlook As of April 1



Washington, DC As of April 2



Increased Testing

Testing has increased from about **300 tests per 1 million persons** (March 18) to about **4,000 tests per 1 million persons** (March 28).

Friday, April 3 is the first day of drive-thru testing at United Medical Center. Testing is for:

- DC residents with symptoms who are 65-years and older;
- DC residents with symptoms who have underlying health conditions;
- Individuals with symptoms who work in a health care provider or facility in DC; and
- First responders with symptoms who work for District Government.

Local First Responder PPE Supply

PPE Item	Total Ordered	Total Received	Out to First Responders	On Hand	Burn Rate per Month	Need Through August
N-95 Masks	275,440	275,440	205,440	70,000	55,000	275,000
Surgical Masks	500,000	51,010	16,950	34,060	106,000	530,000
Gowns/Coveralls	20,893	13,918	3,578	10,340	5,583	27,912
Face Shields	62,000	1,107	119	988	21,720	108,600
Gloves (Pair)	603,870	150,890	92,240	58,650	212,000	1,060,000

Who this Supply Serves: DC's First Responders:

- MPD & FEMS
- DOC & DYRS
- DBH St. Elizabeths & CPEP
- DHS Homeless Services
- CFSA
- DPW
- DDOT

Local Health Provider PPE Supply

PPE Item	Total Ordered + SNS	Total Received	Out to Providers	On Hand	Burn per Month*	Need thru August*
N-95 Masks	692,901	214,341	65,542	148,799	93,000	372,000
Surgical Masks	5,157,620	557,623	187,660	369,963	1,486,656	7,433,280
Gowns	86,837	86,837	26,837	60,000	195,000	840,000
Face Shields	66,515	66,515	1,415	65,100	52,200	208,800
Gloves (Pair)	603,870	514,400	14,400	500,000	6,000,000	24,000,000

Who this Supply Serves: DC's Healthcare Providers:

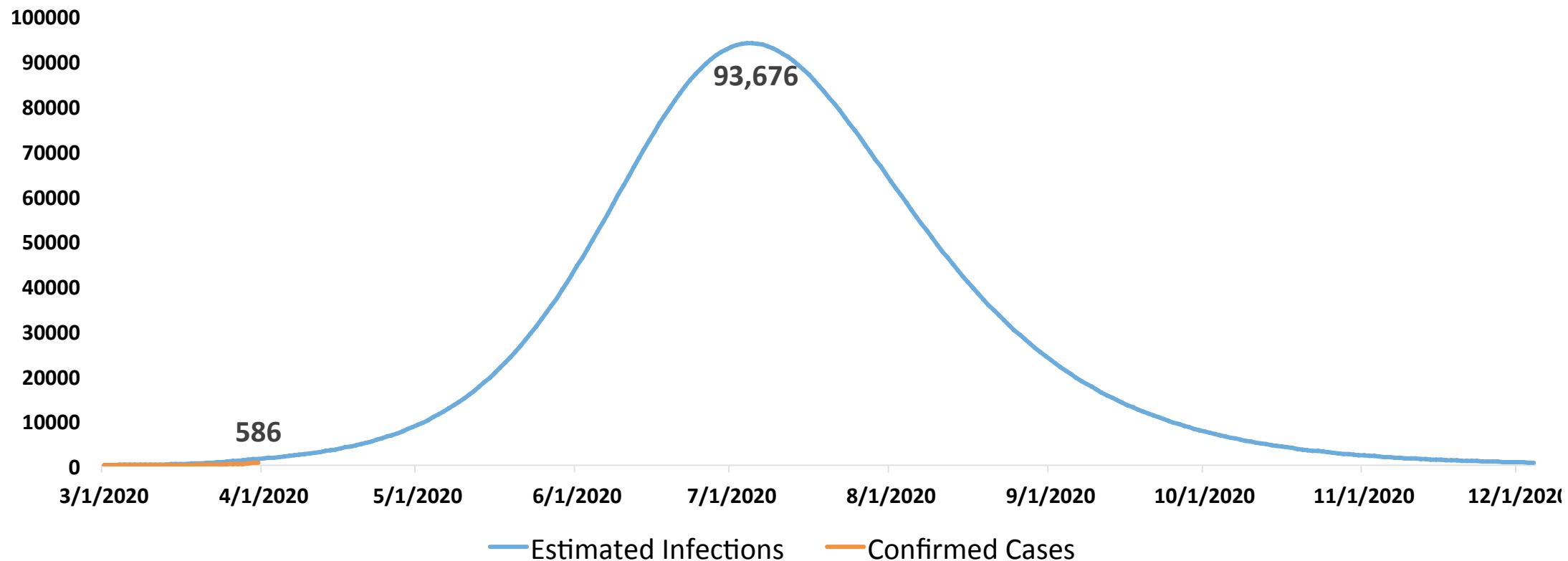
- Hospitals
- Primary Care
- Private Providers
- Long-Term Care
- Dialysis Facilities
- Home Health Agencies
- Clinics

*Burn rate and need for supply calculated at 60% of total, system-wide usage for COVID-19

Where We Are Headed: Medical Surge



COVID-19 Confirmed Positive Cases and Estimated Actual Case Projections



Based on CHIME model

Loss of Life

As of April 3, **15 DC residents** have passed away due to COVID-19.

Tragically, our model projects that loss of life will continue.

	Mild Estimate	Moderate Estimate	Severe Estimate
Estimated cumulative number of deaths	220	440	>1,000 Preliminary estimate

Do your part to save lives: stay home.

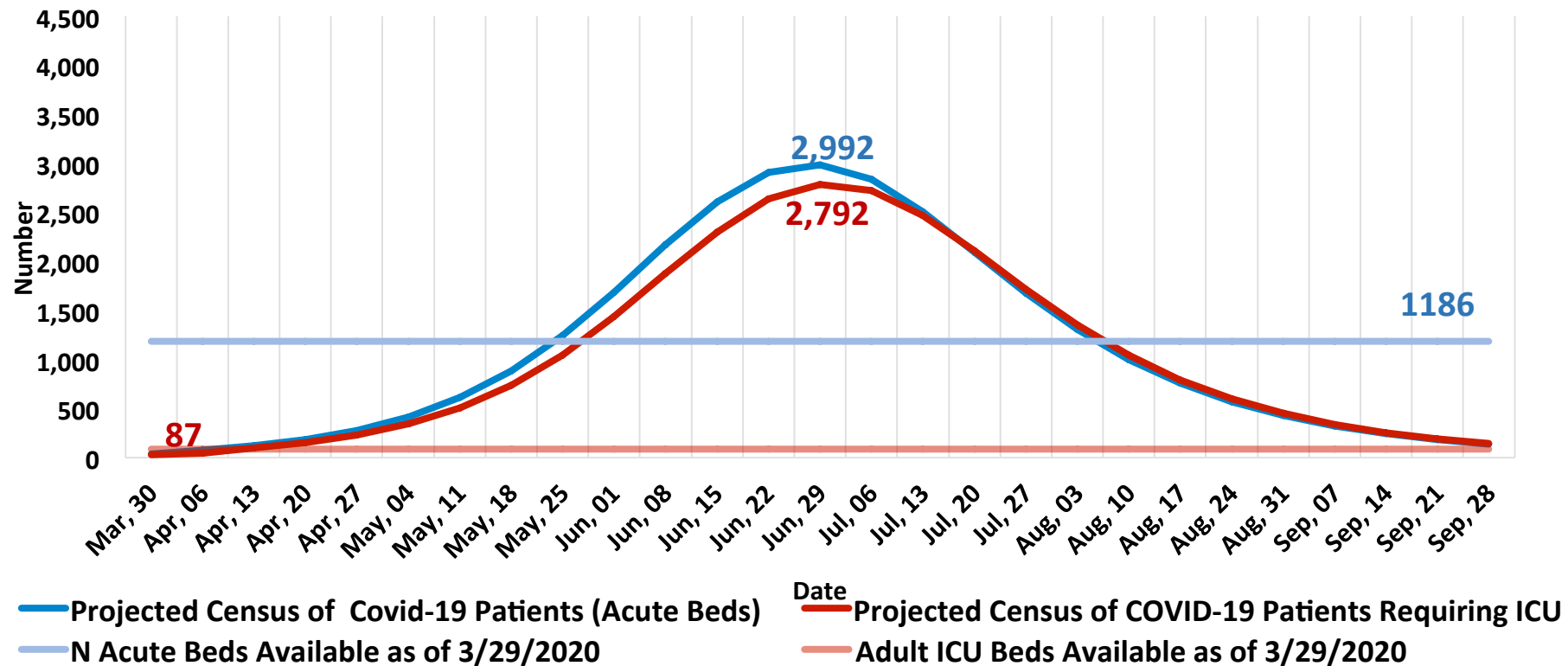
Based on CHIME model

CHIME vs. IHME: Resources Needed

	CHIME Scenario	IHME Model
Acute Care Beds		
Date peak	6/28	4/16
No. of acute care beds needed at peak	2,992	754
Beds needed	1,806	None
ICU Beds		
Date peak	6/30 - 7/1	4/16
No. of ICU beds needed at peak	2,792	134
Beds needed	2,705	47
Ventilators		
No. of ventilators needed at peak	1,453	107
Ventilators needed	1,030	None

CHIME Scenario

6-DAY DOUBLING, 31% REDUCTION IN CONTACT



Our Hospitals and Health Care Providers are Answering the Call

On Wednesday: hospitals directed to create additional capacity (125% of current beds).

Hospital	Current Operational Beds	125% Surge Capacity	Total Beds During Medical Surge (Onsite and Offsite)
George Washington University Hospital	421	526	947
Sibley-Hopkins Hospital	254	318	572
Medstar Georgetown University Hospital	426	533	959
United Medical Center	123	154	277
Howard University Hospital	193	241	434
MedStar Washington Hospital Center	768	960	1728
Children's National Medical Center	332	415	747
Total	2517	3147	5664

As of April 2, over three-quarters of additional capacity identified.

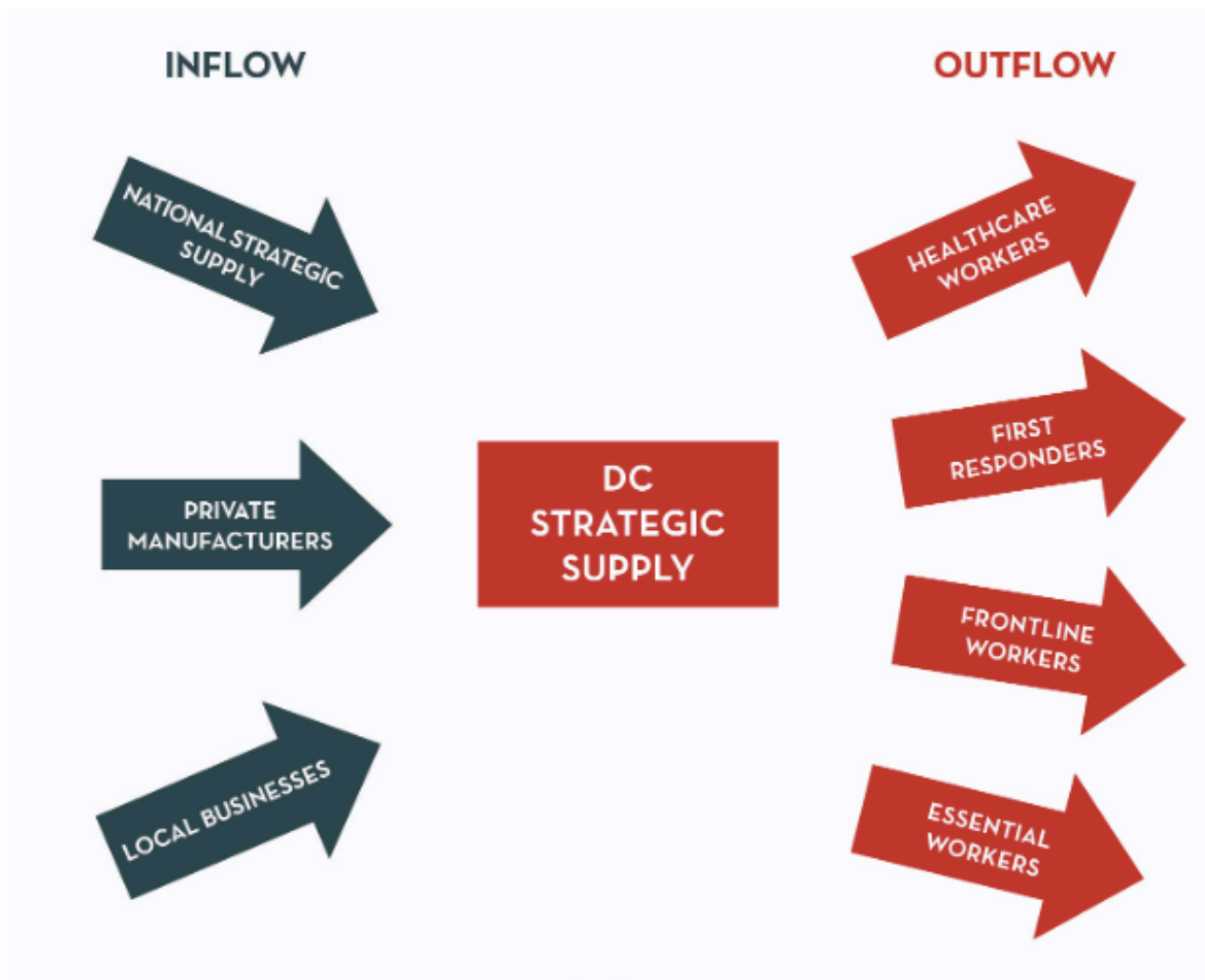
Others stepping up: Bridgepoint and Psychiatric Institute of Washington.

Meeting the Surge Demand: 5,500 Beds

1. **Increase Hospital Space.** Postpone elective procedures.
2. **Maximize Hospital Space.** Expand capacity in existing healthcare facilities by using other available space and adding beds.
3. **Reopen Facilities.** Open furloughed healthcare facilities with USACE help.
4. **Add New Beds.** Establish alternate care sites outside of hospitals.
5. **Add Staff.** Coordinating with DCNG and FEMA for necessary workforce.



Meeting the Surge Demand: Supplies & Equipment



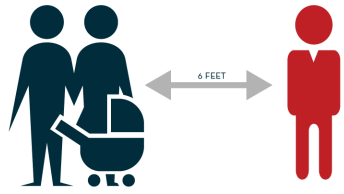
What We'll Need to Support 5,500 Hospital Beds

Ventilators	1000
N-95 Masks	600,000
Surgical Masks	5.6 million
Gowns	1.4 million
Face Shields	350,000
Gloves	40 million

Everyone Has a Role to Play in Flattening the Curve



Social Distancing is a Social Responsibility



Maintain at least **6 feet** between you and others outside your family unit



After returning home, **wash hands** with soap and water for at least 20 seconds



Congregating in groups of **10 or more**



Team sports or sports requiring sharing of equipment



Close contact with individuals outside your family unit

Seek the Advice of a Medical Professional if You Feel Ill

Patients with COVID-19 have experienced mild to severe respiratory illness.

Symptoms can include:

If you have been in an area affected by COVID-19 or in close contact with someone with confirmed COVID-19 in the past two weeks and develop symptoms, call your doctor before going to a healthcare facility.

COUGH



FEVER



Symptoms may appear
2-14 days after exposure.

**SHORTNESS
OF BREATH**



#StayHomeDC



CORONAVIRUS.DC.GOV



DC | HEALTH
GOVERNMENT OF THE DISTRICT OF COLUMBIA

★ ★ ★ WE ARE WASHINGTON
GOVERNMENT OF THE DISTRICT OF COLUMBIA
MURIEL BOWSER, MAYOR