



DISTRICT OF COLUMBIA SENTENCING COMMISSION

FY 2022 PERFORMANCE AND ACCOUNTABILITY REPORT

JANUARY 15, 2023

CONTENTS

Contents	2
1 District of Columbia Sentencing Commission	3
2 2022 Objectives	4
3 2022 Operations	5
4 2022 Strategic Initiatives	7
5 2022 Key Performance Indicators and Workload Measures	10

1 DISTRICT OF COLUMBIA SENTENCING COMMISSION

Mission: The mission of the District of Columbia Sentencing Commission is to implement, monitor, and support the District's voluntary sentencing guidelines, to promote fair and consistent sentencing policies, to increase public understanding of sentencing policies and practices, and to evaluate the effectiveness of the guidelines system in order to recommend changes based on actual sentencing and corrections practice and research.

Services: The Commission advises the District of Columbia on policy matters related to criminal law, sentencing and corrections policy. The Sentencing and Criminal Code Revision Commission Amendment Act of 2007 established a permanent voluntary felony sentencing guidelines and requires the Commission to monitor and make adjustments as needed to promote sentencing policies that limit unwarranted disparity while allowing adequate judicial discretion and proportionality. The sentencing guidelines provide recommended sentences that enhance fairness so that offenders, victims, the community, and all parties will understand the sentence, and sentences will be both more predictable and consistent. The commission provides analysis of sentencing trends and guideline compliance to the public and its representatives to assist in identifying sentencing patterns for felony convictions.

2 2022 OBJECTIVES

Strategic Objective	Number of Measures	Number of Operations
Provide fair, consistent and transparent sentencing policy for felony sentences imposed in the District of Columbia to ensure that similar offenders who are convicted of similar offenses receive similar sentences.	7	3
Provide effective education and support to improve understanding and awareness of the District's Voluntary Sentencing Guidelines to ensure citizens of the District have a clear understanding of the sentencing process.	4	5
Provide high quality analysis and evaluation of sentencing data to inform the development of effective sentencing policy in the District of Columbia that increases public safety while decreasing unwarranted disparity in sentences.	4	3

3 2022 OPERATIONS

Operation Title	Operation Description	Type of Operation
Provide fair, consistent and transparent sentencing policy for felony sentences imposed in the District of Columbia to ensure that similar offenders who are convicted of similar offenses receive similar sentences.		
Identify Irregularities and Inconsistencies in Felony Sentences Imposed	Review sentencing data received from the D.C. Superior Court to identify data quality issues to be resolved; identify sentences that are outside the recommended guideline sentence; and identify emerging sentencing trends that may require review by the Commission and potential policy modifications.	Daily Service
Review and Verify All Felony Sentences	Review and verify each felony sentence imposed by the D.C. Superior Court is accurate, legal; and complete. Once the verification process is completed, calculate whether the sentence imposed matches the recommended guideline sentence in an accurate and timely manner.	Daily Service
Review and Verify all Criminal History Scores	A individual's prior convictions are provided by CSOSA and used to calculate a defendant's criminal history scores. If criminal history information is missing or inaccurate, CSOSA is contacted to provide the accurate information so that compliance can be calculated for each felony count sentenced.	Daily Service
Provide effective education and support to improve understanding and awareness of the District's Voluntary Sentencing Guidelines to ensure citizens of the District have a clear understanding of the sentencing process.		
Provide Sentencing Guideline Training	Provide Sentencing Guideline training to criminal justice professional that will increase their understanding of sentencing practices under the Guidelines and ensure proper application of the Guidelines thus reducing potential sentencing errors.	Daily Service
Maintain and Update Agency Website	Update the agency's website with "Guideline Alerts" to ensure the public and criminal justice community are notified of changes to sentencing policy or practices under the sentencing guidelines. Monthly update training and other guideline related materials to ensure public access to accurate and timely information about sentencing in the District of Columbia.	Daily Service
Respond to Guideline Questions	On an ongoing basis the agency responds to questions from a number of sources including, Court Services and Offender Supervision Agency, judges, attorneys, and the public regarding criminal history scoring, sentence options, and offense rankings. Responding to these questions in an accurate and timely manner avoids procedural delays and ensure that the parties understand the sentencing options available under the Sentencing Guidelines.	Daily Service

(continued)

Operation Title	Operation Description	Type of Operation
Increase public outreach and education regarding the Sentencing Guidelines	Prior Guideline training and outreach has previously been focused on criminal justice partners and professionals. An Guideline outreach and education strategy will be developed and implement targeting residents and community based organization to increase their understanding of the purpose, function, and impact of the Guidelines on felony sentences imposed in the District.	Daily Service
Public Access to Sentencing Data	In addition to providing a comprehensive yearly data set of all felony sentences imposed, multiple data sets will be placed on the agency's website to provide residents and researcher more detailed overview and a clearer understanding of felony sentencing trends for specific offense types in the District.	Daily Service
Provide high quality analysis and evaluation of sentencing data to inform the development of effective sentencing policy in the District of Columbia that increases public safety while decreasing unwarranted disparity in sentences.		
Respond to Data Requests	Effectively and efficiently respond to data requests from legislators, criminal justice professionals, and the public by providing accurate and timely sentencing information.	Daily Service
Monitor and Maintain the Guideline Reporting Information Data (GRID) System	Monitor and maintain the data analysis module of the agency's GRID system used to identify and evaluate sentencing trends throughout the year to inform the development of effective sentencing policy for the District. Technical and operational issues identified will be reported to the vendor for resolution within 14 days.	Daily Service
MPD Arrest Data Processing	In FY2021, the agency will begin receiving and integrating MPD arrest data into the agency's Guideline Information Reporting Data (GRID) system. On an hourly basis arrest data will be transferred to the GRID system where data will be stored, processed and integrated, allowing for analysis of felony cases from arrest through sentencing. Processing will include data validation and reliability checks to ensure the accuracy of the data for analysis purposes.	Daily Service

4 2022 STRATEGIC INITIATIVES

In FY 2022, District of Columbia Sentencing Commission had 4 Strategic Initiatives and completed 75%.

Title	Description	Completion to Date	Update	Explanation for Incomplete Initiative
Analysis of Rule 11(c)(1)(C) Plea	This analysis expands on the initial analysis for 11(c)(1)(C) pleas initiated in FY21, by examining the type and length of sentence imposed by both race and age to identify whether there are differences in the sentences (either type or length) by race and age. The agency will develop a quarterly report that includes the sentences imposed resulting from an 11(c)(1)(C) plea by offense type, sentence type and length, race and age of the individual, type of legal representation, and the recommended Guideline sentence. The analysis would be completed at the overall 11(c)(1)(C) plea level; at the offense category level, and if a sufficient number of individual offenses are available, at the offense level. The first report will be released by January 15, 2022, the second report by April 15, 2022, the third report by July 15, 2022, and the final report completed by September 30, 2022.	Complete	All of the reports were delivered and published on the Commission's website by the set initiative deadlines.	

Community Outreach	<p>During FY 2022, the agency will design four 15-minute in-house quarterly multimedia video presentations. These recordings will demonstrate how the Sentencing Guidelines operate in the District and the factors impacting sentences imposed. The videos will cover; (1) a brief history of the DC Sentencing Commission, (2) how the Guidelines function, (3) factors considered when developing the recommended guideline sentence, and (4) the types of recommended guideline sentences. The first video will be completed and uploaded to the agency's social media accounts (Twitter, Facebook, and YouTube) by November 2021, the second video by February 15, 2022, the third video by June 15, 2022 and the final video by September 15, 2022.</p>	Complete	<p>All videos were developed and published on the agency's website by the deadline.</p>	
GRID System Modifications - Enhancement	<p>In FY2022, the DC Superior Court will be implementing Odyssey, a new case management system. The agency will need to make modifications to its GRID data system to continue to receive IJIS 21.1 data. This multi-stage project will include: (1) identifying the technical requirements and business rules modifications necessary to receive data from the new Odyssey system to be completed by December 30, 2021; (2) design, implement, test, integrate and deploy updated data feed within existing GRID system without downgrading the system and analytic capabilities of the current GRID by April 15, 2022; (3) design and implement a comprehensive testing strategy that includes adequate rework, debugging, retest and regression testing through the change control process by June 15, 2022 and (3) complete inter-agency testing and deploy into production by September 30, 2022</p>	75-99%	<p>Completion of this initiative has been delayed due to factors outside of the agency's control. Specifically, the D.C. Superior Court has delayed the implementation of their new Odyssey system. Therefore, the agency cannot complete its own related enhancement until the Court finishes and deploys their own upgrade.</p>	<p>Completion of this initiative has been delayed due to factors outside of the agency's control. Specifically, the D.C. Superior Court has delayed the implementation of their new Odyssey system. Therefore, the agency cannot complete its own related enhancement until the Court finishes and deploys their own upgrade.</p>

Impact of
Guideline
Modifica-
tions

As a result of the impact that COVID-19 had on limited court operations, significant delays in sentencing occurred. The Commission enacted two Guideline modifications to address these delays. First was a modification to the definition of a short-split sentence and the second was the creation of a new mitigated departure factor. The agency will develop a annual report that will provide data on the frequency these two sentencing modifications were applied, the types of offenses to which they were applied, the modified sentence that was imposed, defendant demographics, and finally the percentage the modified sentences represented compared to all sentences imposed during the same time period.

Complete

This report was published in September 2022.

5 2022 KEY PERFORMANCE INDICATORS AND WORKLOAD MEASURES

Key Performance Indicators

Measure	Directionality	FY 2020	FY 2021	FY 2022 Target	FY 2022 Q1	FY 2022 Q2	FY 2022 Q3	FY 2022 Q4	FY 2022	Was 2022 KPI Met?	Explanation of Unmet KPI
Provide fair, consistent and transparent sentencing policy for felony sentences imposed in the District of Columbia to ensure that similar offenders who are convicted of similar offenses receive similar sentences.											
Compliant Departures	Up is Better	94.3%	92.1%	92%	63.4%	51.4%	62.5%	54.8%	58.4%	Unmet	In FY22 the agency changed how it calculated this KPI. It is now calculated by taking the number of compliant outside of the box sentences (numerator) divided by the total number of outside the box sentences (denominator). Due to this change, the prior FY2022 target is no longer a reasonable target (in fact such a high percentage under the new calculation would be problematic and indicate an issue with the judicial application of the Sentencing Guidelines).

Key Performance Indicators (continued)

Measure	Directionality	FY 2020	FY 2021	FY 2022 Target	FY 2022 Q1	FY 2022 Q2	FY 2022 Q3	FY 2022 Q4	FY 2022	Was 2022 KPI Met?	Explanation of Unmet KPI
Percent of Compliant Guideline Sentences	Up is Better	94%	97%	97%	94.7%	93.5%	96%	95.7%	95.1%	Nearly Met	The Sentencing Guidelines are completely voluntary. Judges have discretion to impose any legal sentence. The slight reduction in compliant sentence may be the result of the sentencing changes as the Court emerges from the COVID-19 emergency. The Guidelines continues to enjoy a very high compliance rate.
Compliant In-The-Box Sentences Imposed	Up is Better	90.6%	90.9%	89%	85.5%	87%	89.4%	90.9%	88.4%	Nearly Met	The Sentencing Guidelines are completely voluntary. Judges have discretion to impose any legal sentence. The slight reduction in compliant in the box sentences may be the result of the sentencing changes as the Court emerges from the COVID-19 emergency. The Guidelines continues to enjoy a very high compliance rate.
Percentage of Sentences for Weapon Offenses Compliant with Guidelines	Up is Better	New in 2021	83%	90%	93.8%	94.9%	96.3%	94.5%	95%	Met	
Percentage of Sentences for Violent offenses that are compliant with the Guidelines	Up is Better	New in 2021	89.4%	92%	95.7%	94.4%	94.1%	96.7%	95.2%	Met	

Key Performance Indicators (continued)

Measure	Directionality	FY 2020	FY 2021	FY 2022 Target	FY 2022 Q1	FY 2022 Q2	FY 2022 Q3	FY 2022 Q4	FY 2022	Was 2022 KPI Met?	Explanation of Unmet KPI
Percent of judicial departure letter responses received	Up is Better	82.1%	90%	80%	No applicable incidents	100%	70.6%	Waiting on Data	73.6%	Nearly Met	It is taking judges longer to respond to judicial letters. Therefore, the percent of responses is expected to increase over the next 90 days (there is some lag due to the time it takes judges to respond).
Percent of compliant sentences that represent 11(C)(1)(c) pleas	Up is Better	15%	15.6%	13%	17.4%	16.6%	10.3%	13.4%	14%	Met	
Provide effective education and support to improve understanding and awareness of the District's Voluntary Sentencing Guidelines to ensure citizens of the District have a clear understanding of the sentencing process.											
Guideline Questions Answered	Up is Better	98.9%	98.9%	98.5%	94.8%	100%	99.2%	100%	98.8%	Met	
Effective Guideline Trainings	Up is Better	90.2%	94.4%	89%	No applicable incidents	100%	100%	100%	100%	Met	
Number of Social Media Postings	Up is Better	New in 2021	264	65	233	189	189	179	790	Met	

Key Performance Indicators (continued)

Measure	Directionality	FY 2020	FY 2021	FY 2022 Target	FY 2022 Q1	FY 2022 Q2	FY 2022 Q3	FY 2022 Q4	FY 2022	Was 2022 KPI Met?	Explanation of Unmet KPI
Percentage of Website Hits Related to Outreach and Education Material	Up is Better	New in 2021	46%	35%	9.3%	11.4%	16.8%	16.6%	13.8%	Unmet	The reason for the decrease in percentage of hits for educational materials is likely due to the increase in other materials (such as the publishing a new Guidelines manual - the Guidelines Manual regularly receives the most website hits - sharing of Commission data and Guidelines rules updates) we have also published on the site in FY22. Additionally, educational materials are also available on our Facebook page. Those numbers are not recorded here.
Provide high quality analysis and evaluation of sentencing data to inform the development of effective sentencing policy in the District of Columbia that increases public safety while decreasing unwarranted disparity in sentences.											
Data Request Response Time	Up is Better	92.5%	95.2%	85%	100%	100%	100%	100%	100%	Met	

Key Performance Indicators (continued)

Measure	Directionality	FY 2020	FY 2021	FY 2022 Target	FY 2022 Q1	FY 2022 Q2	FY 2022 Q3	FY 2022 Q4	FY 2022	Was 2022 KPI Met?	Explanation of Unmet KPI
GRID/GSS tickets resolved within 14 days	Up is Better	76.3%	84.8%	70%	0%	0%	0%	0%	0%	Unmet	In FY 2022 the agency prioritized work on other time sensitive data system projects above resolving non-critical ticket issues (non-critical tickets do not impact the data system's general operations or capabilities). The agency also extended the average length of time it expects to resolve tickets by focusing on staff testing of the fixes before the ticket is deemed resolved. Due to this change, the measure has been modified for FY23. In FY22 there were no critical tickets reported. As such, while the tickets were resolved in a timely manner, it took longer than 20 days for each of the tickets to be fixed, tested, and accepted by the agency.
Percentage of Unique Arrests from MPD that are verified and processed in the GRID system	Up is Better	New in 2021	83.7%	85%	100%	100%	100%	100%	100%	Met	
Percentage of MPD Arrest Charges received that are Verified and Processed in GRID System	Up is Better	New in 2021	93.2%	76%	100%	100%	100%	100%	100%	Met	

Workload Measures

Measure	FY 2020	FY 2021	FY 2022 Q1	FY 2022 Q2	FY 2022 Q3	FY 2022 Q4	FY 2022
Identify Irregularities and Inconsistencies in Felony Sentences Imposed							
Number of Sealed Cases	1310	7192	483	498	430	415	1826
Number of DQA's Identified and Submitted	97	54	Annual Measure	Annual Measure	Annual Measure	Annual Measure	24
Review and Verify all Criminal History Scores							
Requests for Missing Criminal History Scores	144	64	16	40	52	63	171
Review and Verify All Felony Sentences							
Number of CSOSA Criminal History Scores Submitted	794	728	289	291	259	254	1093
Number of Felony Counts Sentenced	910	913	310	378	479	371	1538
Number of Felony Cases Sentenced	706	673	243	307	378	299	1227
Number of Departure Letters Sent	55	16	0	12	27	34	73
Number of Probation Revocations Sentenced	363	117	40	44	29	52	165
Number of sentences imposed as the result of 11(C)(1)(c) pleas	122	97	Annual Measure	Annual Measure	Annual Measure	Annual Measure	249
Maintain and Update Agency Website							
Number of Agency Website Hits	21,153	25,554	7314	9443	10,064	8529	35,350
Provide Sentencing Guideline Training							
Number of individuals receiving Sentencing Guideline Training	212	123	45	25	100	165	335
Number of Sentencing Guideline Trainings Provided	13	8	1	2	6	18	27
Agency Website Updates Completed	72	414	21	20	37	19	97
Monitor and Maintain the Guideline Reporting Information Data (GRID) System							
Number of GRID Tickets Entered	29	33	2	5	4	8	19
Number Hours required to complete data requests	1286	2031	Semi-Annual Measure	Semi-Annual Measure	Semi-Annual Measure	Semi-Annual Measure	370
Number of new charge codes mapped in GRID	34	31	0	0	0	No applicable incidents	No applicable incidents
Number of Critical GRID Tickets Submitted	14	12	Annual Measure	Annual Measure	Annual Measure	Annual Measure	No applicable incidents
MPD Arrest Data Processing							
Total Number of MPD Arrest Charges Received	New in 2021	35,602	18,325	18,128	21,652	21,010	79,115

Workload Measures (continued)

Measure	FY 2020	FY 2021	FY 2022 Q1	FY 2022 Q2	FY 2022 Q3	FY 2022 Q4	FY 2022
Number of Unique MPD Arrests Received	New in 2021	19,483	17,689	15,458	15,971	20,943	70,061
Respond to Data Requests							
Data Sets Provided	18	14	1	0	1	0	2
Number of Data Requests Received	47	42	2	4	2	3	11

FY	2022
Fund Detail	0100-LOCAL FUNDS

Program Code	Values	
	Sum of Budget	Sum of Expenditures
1000-MANAGEMENT	-	-
1010-PERSONNEL	124,386.10	120,474.20
1015-TRAINING	43,786.00	38,770.94
1020-CONTRACTING AND PROCUREMENT	-	-
1030-PROPERTY MANAGEMENT	6,337.31	6,090.19
1040-INFORMATION TECHNOLOGY	35,501.00	32,579.79
1060-LEGAL SERVICES	10,824.00	10,519.81
2010-ACS OFFENSE AND OFFENDER DATABASE	606,886.47	618,490.82
2020-SENTENCING GUIDELINES MONITORING	391,269.00	391,202.00
2040-POLICY REPORTS AND PROPOSALS	185,984.44	212,068.34
2050-SENTENCING GUIDELINES TRAINING	148,060.00	198,423.95
2060-PREP SENTENCING GUIDELINES MATERIALS	77,297.00	-
9960-YR END CLOSE	-	-
Grand Total	1,630,331.32	1,628,620.04

FY	Fund Detail	CSG
2022	0100-LOCAL FUNDS	0041-CONTRACTUAL SERVICES - OTHER
2022	0100-LOCAL FUNDS	0014-FRINGE BENEFITS - CURR PERSONNEL
2022	0100-LOCAL FUNDS	0014-FRINGE BENEFITS - CURR PERSONNEL
2022	0100-LOCAL FUNDS	0020-SUPPLIES AND MATERIALS
2022	0100-LOCAL FUNDS	0020-SUPPLIES AND MATERIALS
2022	0100-LOCAL FUNDS	0035-OCCUPANCY FIXED COSTS
2022	0100-LOCAL FUNDS	0030-ENERGY, COMM. AND BLDG RENTALS
2022	0100-LOCAL FUNDS	0030-ENERGY, COMM. AND BLDG RENTALS
2022	0100-LOCAL FUNDS	0031-TELECOMMUNICATIONS
2022	0100-LOCAL FUNDS	0040-OTHER SERVICES AND CHARGES
2022	0100-LOCAL FUNDS	0013-ADDITIONAL GROSS PAY
2022	0100-LOCAL FUNDS	0014-FRINGE BENEFITS - CURR PERSONNEL
2022	0100-LOCAL FUNDS	0014-FRINGE BENEFITS - CURR PERSONNEL
2022	0100-LOCAL FUNDS	0014-FRINGE BENEFITS - CURR PERSONNEL
2022	0100-LOCAL FUNDS	0015-OVERTIME PAY
2022	0100-LOCAL FUNDS	0035-OCCUPANCY FIXED COSTS
2022	0100-LOCAL FUNDS	0040-OTHER SERVICES AND CHARGES
2022	0100-LOCAL FUNDS	0040-OTHER SERVICES AND CHARGES
2022	0100-LOCAL FUNDS	0040-OTHER SERVICES AND CHARGES
2022	0100-LOCAL FUNDS	0040-OTHER SERVICES AND CHARGES
2022	0100-LOCAL FUNDS	0040-OTHER SERVICES AND CHARGES
2022	0100-LOCAL FUNDS	0040-OTHER SERVICES AND CHARGES
2022	0100-LOCAL FUNDS	0040-OTHER SERVICES AND CHARGES
2022	0100-LOCAL FUNDS	0040-OTHER SERVICES AND CHARGES
2022	0100-LOCAL FUNDS	0014-FRINGE BENEFITS - CURR PERSONNEL
2022	0100-LOCAL FUNDS	0011-REGULAR PAY - CONT FULL TIME
2022	0100-LOCAL FUNDS	0011-REGULAR PAY - CONT FULL TIME
2022	0100-LOCAL FUNDS	0040-OTHER SERVICES AND CHARGES
2022	0100-LOCAL FUNDS	0040-OTHER SERVICES AND CHARGES
2022	0100-LOCAL FUNDS	0040-OTHER SERVICES AND CHARGES
2022	0100-LOCAL FUNDS	0040-OTHER SERVICES AND CHARGES
2022	0100-LOCAL FUNDS	0040-OTHER SERVICES AND CHARGES
2022	0100-LOCAL FUNDS	0041-CONTRACTUAL SERVICES - OTHER
2022	0100-LOCAL FUNDS	0070-EQUIPMENT & EQUIPMENT RENTAL
2022	0100-LOCAL FUNDS	0040-OTHER SERVICES AND CHARGES
2022	0100-LOCAL FUNDS	0014-FRINGE BENEFITS - CURR PERSONNEL
2022	0100-LOCAL FUNDS	0014-FRINGE BENEFITS - CURR PERSONNEL
2022	0100-LOCAL FUNDS	0014-FRINGE BENEFITS - CURR PERSONNEL
2022	0100-LOCAL FUNDS	0014-FRINGE BENEFITS - CURR PERSONNEL
2022	0100-LOCAL FUNDS	0014-FRINGE BENEFITS - CURR PERSONNEL
2022	0100-LOCAL FUNDS	0011-REGULAR PAY - CONT FULL TIME
2022	0100-LOCAL FUNDS	0020-SUPPLIES AND MATERIALS
2022	0100-LOCAL FUNDS	0040-OTHER SERVICES AND CHARGES
2022	0100-LOCAL FUNDS	0040-OTHER SERVICES AND CHARGES
2022	0100-LOCAL FUNDS	0040-OTHER SERVICES AND CHARGES
2022	0100-LOCAL FUNDS	0070-EQUIPMENT & EQUIPMENT RENTAL

2022	0100-LOCAL FUNDS	0013-ADDITIONAL GROSS PAY
2022	0100-LOCAL FUNDS	0014-FRINGE BENEFITS - CURR PERSONNEL
2022	0100-LOCAL FUNDS	0014-FRINGE BENEFITS - CURR PERSONNEL
2022	0100-LOCAL FUNDS	0014-FRINGE BENEFITS - CURR PERSONNEL
2022	0100-LOCAL FUNDS	0014-FRINGE BENEFITS - CURR PERSONNEL
2022	0100-LOCAL FUNDS	0014-FRINGE BENEFITS - CURR PERSONNEL
2022	0100-LOCAL FUNDS	0014-FRINGE BENEFITS - CURR PERSONNEL
2022	0100-LOCAL FUNDS	0040-OTHER SERVICES AND CHARGES
2022	0100-LOCAL FUNDS	0040-OTHER SERVICES AND CHARGES
2022	0100-LOCAL FUNDS	0070-EQUIPMENT & EQUIPMENT RENTAL
2022	0100-LOCAL FUNDS	0013-ADDITIONAL GROSS PAY
2022	0100-LOCAL FUNDS	0014-FRINGE BENEFITS - CURR PERSONNEL
2022	0100-LOCAL FUNDS	0014-FRINGE BENEFITS - CURR PERSONNEL
2022	0100-LOCAL FUNDS	0014-FRINGE BENEFITS - CURR PERSONNEL
2022	0100-LOCAL FUNDS	0014-FRINGE BENEFITS - CURR PERSONNEL
2022	0100-LOCAL FUNDS	0014-FRINGE BENEFITS - CURR PERSONNEL
2022	0100-LOCAL FUNDS	0020-SUPPLIES AND MATERIALS
2022	0100-LOCAL FUNDS	0033-JANITORIAL SERVICES
2022	0100-LOCAL FUNDS	0031-TELEPHONE, TELEGRAPH, TELEGRAM, ETC
2022	0100-LOCAL FUNDS	0040-OTHER SERVICES AND CHARGES
2022	0100-LOCAL FUNDS	0040-OTHER SERVICES AND CHARGES
2022	0100-LOCAL FUNDS	0040-OTHER SERVICES AND CHARGES
2022	0100-LOCAL FUNDS	0041-CONTRACTUAL SERVICES - OTHER
2022	0100-LOCAL FUNDS	0070-EQUIPMENT & EQUIPMENT RENTAL
2022	0100-LOCAL FUNDS	0013-ADDITIONAL GROSS PAY
2022	0100-LOCAL FUNDS	0014-FRINGE BENEFITS - CURR PERSONNEL
2022	0100-LOCAL FUNDS	0014-FRINGE BENEFITS - CURR PERSONNEL
2022	0100-LOCAL FUNDS	0014-FRINGE BENEFITS - CURR PERSONNEL
2022	0100-LOCAL FUNDS	0014-FRINGE BENEFITS - CURR PERSONNEL
2022	0100-LOCAL FUNDS	0014-FRINGE BENEFITS - CURR PERSONNEL
2022	0100-LOCAL FUNDS	0014-FRINGE BENEFITS - CURR PERSONNEL
2022	0100-LOCAL FUNDS	0014-FRINGE BENEFITS - CURR PERSONNEL
2022	0100-LOCAL FUNDS	0014-FRINGE BENEFITS - CURR PERSONNEL
2022	0100-LOCAL FUNDS	0014-FRINGE BENEFITS - CURR PERSONNEL
2022	0100-LOCAL FUNDS	0014-FRINGE BENEFITS - CURR PERSONNEL
2022	0100-LOCAL FUNDS	0011-REGULAR PAY - CONT FULL TIME
2022	0100-LOCAL FUNDS	0020-SUPPLIES AND MATERIALS
2022	0100-LOCAL FUNDS	0040-OTHER SERVICES AND CHARGES
2022	0100-LOCAL FUNDS	0041-CONTRACTUAL SERVICES - OTHER
2022	0100-LOCAL FUNDS	0013-ADDITIONAL GROSS PAY
2022	0100-LOCAL FUNDS	0014-FRINGE BENEFITS - CURR PERSONNEL
2022	0100-LOCAL FUNDS	0014-FRINGE BENEFITS - CURR PERSONNEL
2022	0100-LOCAL FUNDS	0014-FRINGE BENEFITS - CURR PERSONNEL
2022	0100-LOCAL FUNDS	0014-FRINGE BENEFITS - CURR PERSONNEL
2022	0100-LOCAL FUNDS	0014-FRINGE BENEFITS - CURR PERSONNEL
2022	0100-LOCAL FUNDS	0011-REGULAR PAY - CONT FULL TIME

2022	0100-LOCAL FUNDS	0033-JANITORIAL SERVICES
2022	0100-LOCAL FUNDS	0030-ENERGY, COMM. AND BLDG RENTALS
2022	0100-LOCAL FUNDS	0034-SECURITY SERVICES
2022	0100-LOCAL FUNDS	0040-OTHER SERVICES AND CHARGES
2022	0100-LOCAL FUNDS	0040-OTHER SERVICES AND CHARGES
2022	0100-LOCAL FUNDS	0040-OTHER SERVICES AND CHARGES
2022	0100-LOCAL FUNDS	0040-OTHER SERVICES AND CHARGES

Comp Object	Org Code
0409-CONTRACTUAL SERVICES - OTHER	2000-ACS ADMINISTRATIVE PROGRAMS DETAIL
0155-DENTAL PLAN	1000-ADVISORY COMMISSION ON SENTENCING
0154-OPTICAL PLAN	2000-ACS ADMINISTRATIVE PROGRAMS DETAIL
0201-OFFICE SUPPLIES	1000-ADVISORY COMMISSION ON SENTENCING
0201-OFFICE SUPPLIES	1000-ADVISORY COMMISSION ON SENTENCING
0310-OCCUPANCY FIXED COSTS	1000-ADVISORY COMMISSION ON SENTENCING
0307-WATER	1000-ADVISORY COMMISSION ON SENTENCING
0307-WATER	9900-AUDIT ADJUSTMENT
0308-TELECOMMUNICATIONS	1000-ADVISORY COMMISSION ON SENTENCING
0410-OFFICE SUPPORT	1000-ADVISORY COMMISSION ON SENTENCING
0137-SPECIAL AWARDS PAY	1000-ADVISORY COMMISSION ON SENTENCING
0141-GROUP LIFE INSURANCE	1000-ADVISORY COMMISSION ON SENTENCING
0159-RETIREMENT	2000-ACS ADMINISTRATIVE PROGRAMS DETAIL
0161-DC HEALTH BENEFIT FEES	2000-ACS ADMINISTRATIVE PROGRAMS DETAIL
0133-OVERTIME PAY	2000-ACS ADMINISTRATIVE PROGRAMS DETAIL
0310-OCCUPANCY FIXED COSTS	9900-AUDIT ADJUSTMENT
0410-OFFICE SUPPORT	1000-ADVISORY COMMISSION ON SENTENCING
0410-OFFICE SUPPORT	1000-ADVISORY COMMISSION ON SENTENCING
0410-OFFICE SUPPORT	1000-ADVISORY COMMISSION ON SENTENCING
0408-PROF SERVICE FEES AND CONTR	1000-ADVISORY COMMISSION ON SENTENCING
0424-CONFERENCE FEES LOC OUT OF CITY	1000-ADVISORY COMMISSION ON SENTENCING
0408-PROF SERVICE FEES AND CONTR	1000-ADVISORY COMMISSION ON SENTENCING
0408-PROF SERVICE FEES AND CONTR	2000-ACS ADMINISTRATIVE PROGRAMS DETAIL
0141-GROUP LIFE INSURANCE	2000-ACS ADMINISTRATIVE PROGRAMS DETAIL
0111-CONTINUING FULL TIME	1000-ADVISORY COMMISSION ON SENTENCING
0111-CONTINUING FULL TIME	2000-ACS ADMINISTRATIVE PROGRAMS DETAIL
0410-OFFICE SUPPORT	9900-AUDIT ADJUSTMENT
0416-POSTAGE	1000-ADVISORY COMMISSION ON SENTENCING
0405-MAINTENANCE AND REPAIRS - MACH	1000-ADVISORY COMMISSION ON SENTENCING
0410-OFFICE SUPPORT	1000-ADVISORY COMMISSION ON SENTENCING
0408-PROF SERVICE FEES AND CONTR	1000-ADVISORY COMMISSION ON SENTENCING
0409-CONTRACTUAL SERVICES - OTHER	2000-ACS ADMINISTRATIVE PROGRAMS DETAIL
0702-PURCHASES - EQUIPMENT AND MACHINERY	1000-ADVISORY COMMISSION ON SENTENCING
0494-OCTO IT ASSESSMENT	1000-ADVISORY COMMISSION ON SENTENCING
0147-MISC FRINGE BENEFITS	2000-ACS ADMINISTRATIVE PROGRAMS DETAIL
0154-OPTICAL PLAN	2000-ACS ADMINISTRATIVE PROGRAMS DETAIL
0161-DC HEALTH BENEFIT FEES	2000-ACS ADMINISTRATIVE PROGRAMS DETAIL
0142-HEALTH BENEFITS	2000-ACS ADMINISTRATIVE PROGRAMS DETAIL
0148-RETIREMENT CONTRIBUTION - FICA	2000-ACS ADMINISTRATIVE PROGRAMS DETAIL
0111-CONTINUING FULL TIME	2000-ACS ADMINISTRATIVE PROGRAMS DETAIL
0201-OFFICE SUPPLIES	9900-AUDIT ADJUSTMENT
0493-PROCUREMENT ASSESSMENT	1000-ADVISORY COMMISSION ON SENTENCING
0419-TUITION FOR EMPLOYEE TRAINING	1000-ADVISORY COMMISSION ON SENTENCING
0402-TRAVEL - OUT OF CITY	1000-ADVISORY COMMISSION ON SENTENCING
0702-PURCHASES - EQUIPMENT AND MACHINERY	1000-ADVISORY COMMISSION ON SENTENCING

0137-SPECIAL AWARDS PAY	2000-ACS ADMINISTRATIVE PROGRAMS DETAIL
0148-RETIREMENT CONTRIBUTION - FICA	1000-ADVISORY COMMISSION ON SENTENCING
0141-GROUP LIFE INSURANCE	2000-ACS ADMINISTRATIVE PROGRAMS DETAIL
0142-HEALTH BENEFITS	2000-ACS ADMINISTRATIVE PROGRAMS DETAIL
0154-OPTICAL PLAN	2000-ACS ADMINISTRATIVE PROGRAMS DETAIL
0158-MEDICARE CONTRIBUTION	2000-ACS ADMINISTRATIVE PROGRAMS DETAIL
0158-MEDICARE CONTRIBUTION	2000-ACS ADMINISTRATIVE PROGRAMS DETAIL
0402-TRAVEL - OUT OF CITY	1000-ADVISORY COMMISSION ON SENTENCING
0408-PROF SERVICE FEES AND CONTR	1000-ADVISORY COMMISSION ON SENTENCING
0702-PURCHASES - EQUIPMENT AND MACHINERY	1000-ADVISORY COMMISSION ON SENTENCING
0134-TERMINAL LEAVE	2000-ACS ADMINISTRATIVE PROGRAMS DETAIL
0161-DC HEALTH BENEFIT FEES	1000-ADVISORY COMMISSION ON SENTENCING
0147-MISC FRINGE BENEFITS	2000-ACS ADMINISTRATIVE PROGRAMS DETAIL
0155-DENTAL PLAN	2000-ACS ADMINISTRATIVE PROGRAMS DETAIL
0158-MEDICARE CONTRIBUTION	2000-ACS ADMINISTRATIVE PROGRAMS DETAIL
0141-GROUP LIFE INSURANCE	2000-ACS ADMINISTRATIVE PROGRAMS DETAIL
0201-OFFICE SUPPLIES	1000-ADVISORY COMMISSION ON SENTENCING
0430-JANITORIAL SERVICES	1000-ADVISORY COMMISSION ON SENTENCING
0308-TELEPHONE, TELETYPE, TELEGRAM, ETC	1000-ADVISORY COMMISSION ON SENTENCING
0401-TRAVEL - LOCAL	1000-ADVISORY COMMISSION ON SENTENCING
0416-POSTAGE	1000-ADVISORY COMMISSION ON SENTENCING
0402-TRAVEL - OUT OF CITY	1000-ADVISORY COMMISSION ON SENTENCING
0409-CONTRACTUAL SERVICES - OTHER	1000-ADVISORY COMMISSION ON SENTENCING
0702-PURCHASES - EQUIPMENT AND MACHINERY	1000-ADVISORY COMMISSION ON SENTENCING
0137-SPECIAL AWARDS PAY	2000-ACS ADMINISTRATIVE PROGRAMS DETAIL
0147-MISC FRINGE BENEFITS	1000-ADVISORY COMMISSION ON SENTENCING
0154-OPTICAL PLAN	1000-ADVISORY COMMISSION ON SENTENCING
0158-MEDICARE CONTRIBUTION	1000-ADVISORY COMMISSION ON SENTENCING
0159-RETIREMENT	1000-ADVISORY COMMISSION ON SENTENCING
0161-DC HEALTH BENEFIT FEES	2000-ACS ADMINISTRATIVE PROGRAMS DETAIL
0155-DENTAL PLAN	2000-ACS ADMINISTRATIVE PROGRAMS DETAIL
0159-RETIREMENT	2000-ACS ADMINISTRATIVE PROGRAMS DETAIL
0147-MISC FRINGE BENEFITS	2000-ACS ADMINISTRATIVE PROGRAMS DETAIL
0155-DENTAL PLAN	2000-ACS ADMINISTRATIVE PROGRAMS DETAIL
0147-MISC FRINGE BENEFITS	2000-ACS ADMINISTRATIVE PROGRAMS DETAIL
0111-CONTINUING FULL TIME	2000-ACS ADMINISTRATIVE PROGRAMS DETAIL
0201-OFFICE SUPPLIES	1000-ADVISORY COMMISSION ON SENTENCING
0424-CONFERENCE FEES LOC OUT OF CITY	1000-ADVISORY COMMISSION ON SENTENCING
0409-CONTRACTUAL SERVICES - OTHER	2000-ACS ADMINISTRATIVE PROGRAMS DETAIL
0134-TERMINAL LEAVE	2000-ACS ADMINISTRATIVE PROGRAMS DETAIL
0142-HEALTH BENEFITS	1000-ADVISORY COMMISSION ON SENTENCING
0148-RETIREMENT CONTRIBUTION - FICA	2000-ACS ADMINISTRATIVE PROGRAMS DETAIL
0142-HEALTH BENEFITS	2000-ACS ADMINISTRATIVE PROGRAMS DETAIL
0148-RETIREMENT CONTRIBUTION - FICA	2000-ACS ADMINISTRATIVE PROGRAMS DETAIL
0159-RETIREMENT	2000-ACS ADMINISTRATIVE PROGRAMS DETAIL
0111-CONTINUING FULL TIME	2000-ACS ADMINISTRATIVE PROGRAMS DETAIL

0430-JANITORIAL SERVICES	1000-ADVISORY COMMISSION ON SENTENCING
0305-ELECTRICITY	1000-ADVISORY COMMISSION ON SENTENCING
0440-SECURITY SERVICES	1000-ADVISORY COMMISSION ON SENTENCING
0410-OFFICE SUPPORT	1000-ADVISORY COMMISSION ON SENTENCING
0411-PRINTING, DUPLICATING, ETC	1000-ADVISORY COMMISSION ON SENTENCING
0411-PRINTING, DUPLICATING, ETC	1000-ADVISORY COMMISSION ON SENTENCING
0416-POSTAGE	1000-ADVISORY COMMISSION ON SENTENCING

Program Code
2020-SENTENCING GUIDELINES MONITORING
1010-PERSONNEL
2050-SENTENCING GUIDELINES TRAINING
2020-SENTENCING GUIDELINES MONITORING
1060-LEGAL SERVICES
1030-PROPERTY MANAGEMENT
1030-PROPERTY MANAGEMENT
9960-YR END CLOSE
1030-PROPERTY MANAGEMENT
1000-MANAGEMENT
1010-PERSONNEL
1010-PERSONNEL
2010-ACS OFFENSE AND OFFENDER DATABASE
2050-SENTENCING GUIDELINES TRAINING
2010-ACS OFFENSE AND OFFENDER DATABASE
9960-YR END CLOSE
1015-TRAINING
1010-PERSONNEL
1040-INFORMATION TECHNOLOGY
1015-TRAINING
1015-TRAINING
1060-LEGAL SERVICES
2010-ACS OFFENSE AND OFFENDER DATABASE
2040-POLICY REPORTS AND PROPOSALS
1010-PERSONNEL
2040-POLICY REPORTS AND PROPOSALS
9960-YR END CLOSE
1020-CONTRACTING AND PROCUREMENT
2040-POLICY REPORTS AND PROPOSALS
2050-SENTENCING GUIDELINES TRAINING
1010-PERSONNEL
2020-SENTENCING GUIDELINES MONITORING
1010-PERSONNEL
1040-INFORMATION TECHNOLOGY
2040-POLICY REPORTS AND PROPOSALS
2040-POLICY REPORTS AND PROPOSALS
2040-POLICY REPORTS AND PROPOSALS
2050-SENTENCING GUIDELINES TRAINING
2050-SENTENCING GUIDELINES TRAINING
2010-ACS OFFENSE AND OFFENDER DATABASE
9960-YR END CLOSE
1020-CONTRACTING AND PROCUREMENT
1015-TRAINING
1060-LEGAL SERVICES
1015-TRAINING

2050-SENTENCING GUIDELINES TRAINING
1010-PERSONNEL
2010-ACS OFFENSE AND OFFENDER DATABASE
2010-ACS OFFENSE AND OFFENDER DATABASE
2010-ACS OFFENSE AND OFFENDER DATABASE
2040-POLICY REPORTS AND PROPOSALS
2050-SENTENCING GUIDELINES TRAINING
1015-TRAINING
1040-INFORMATION TECHNOLOGY
1000-MANAGEMENT
2040-POLICY REPORTS AND PROPOSALS
1010-PERSONNEL
2010-ACS OFFENSE AND OFFENDER DATABASE
2010-ACS OFFENSE AND OFFENDER DATABASE
2010-ACS OFFENSE AND OFFENDER DATABASE
2050-SENTENCING GUIDELINES TRAINING
1010-PERSONNEL
1000-MANAGEMENT
1030-PROPERTY MANAGEMENT
1015-TRAINING
2040-POLICY REPORTS AND PROPOSALS
1010-PERSONNEL
1030-PROPERTY MANAGEMENT
1040-INFORMATION TECHNOLOGY
2010-ACS OFFENSE AND OFFENDER DATABASE
1010-PERSONNEL
1010-PERSONNEL
1010-PERSONNEL
1010-PERSONNEL
2010-ACS OFFENSE AND OFFENDER DATABASE
2040-POLICY REPORTS AND PROPOSALS
2040-POLICY REPORTS AND PROPOSALS
2050-SENTENCING GUIDELINES TRAINING
2050-SENTENCING GUIDELINES TRAINING
2060-PREP SENTENCING GUIDELINES MATERIALS
2050-SENTENCING GUIDELINES TRAINING
1000-MANAGEMENT
1060-LEGAL SERVICES
2010-ACS OFFENSE AND OFFENDER DATABASE
2010-ACS OFFENSE AND OFFENDER DATABASE
1010-PERSONNEL
2010-ACS OFFENSE AND OFFENDER DATABASE
2040-POLICY REPORTS AND PROPOSALS
2040-POLICY REPORTS AND PROPOSALS
2050-SENTENCING GUIDELINES TRAINING
2060-PREP SENTENCING GUIDELINES MATERIALS

1030-PROPERTY MANAGEMENT
1030-PROPERTY MANAGEMENT
1030-PROPERTY MANAGEMENT
1030-PROPERTY MANAGEMENT
1040-INFORMATION TECHNOLOGY
1010-PERSONNEL
1030-PROPERTY MANAGEMENT

Index	PCA	Project
10002-SENTENCING COMMISSION	20200-SENTENCING GUIDELINES MONITORING	-
10000-ADVISORY COMMISSION ON SENTENCING	10100-PERSONNEL	-
20000-ADVISORY COMMISSION ON SENTENCING	20500-SENTENCING GUIDELINES TRAINING	-
10000-ADVISORY COMMISSION ON SENTENCING	20200-SENTENCING GUIDELINES MONITORING	-
10000-ADVISORY COMMISSION ON SENTENCING	10600-LEGAL SERVICES	-
10000-ADVISORY COMMISSION ON SENTENCING	10300-PROPERTY MANAGEMENT	-
10000-ADVISORY COMMISSION ON SENTENCING	10300-PROPERTY MANAGEMENT	-
AUDIT-YEAR END AUDIT ADJUSTMENT	AUDIT-AUDIT ADJUSTMENT	-
10000-ADVISORY COMMISSION ON SENTENCING	10300-PROPERTY MANAGEMENT	-
10000-ADVISORY COMMISSION ON SENTENCING	10000-MANAGEMENT	-
10000-ADVISORY COMMISSION ON SENTENCING	10100-PERSONNEL	-
10000-ADVISORY COMMISSION ON SENTENCING	10100-PERSONNEL	-
20000-ADVISORY COMMISSION ON SENTENCING	20100-ACS OFFENSE AND OFFENDER DATABASE	-
20000-ADVISORY COMMISSION ON SENTENCING	20500-SENTENCING GUIDELINES TRAINING	-
20000-ADVISORY COMMISSION ON SENTENCING	20100-ACS OFFENSE AND OFFENDER DATABASE	-
AUDIT-YEAR END AUDIT ADJUSTMENT	AUDIT-AUDIT ADJUSTMENT	-
10000-ADVISORY COMMISSION ON SENTENCING	10150-TRAINING AND EMPLOYEE DEVELOPMENT	-
10000-ADVISORY COMMISSION ON SENTENCING	10100-PERSONNEL	-
10000-ADVISORY COMMISSION ON SENTENCING	10400-INFORMATION TECHNOLOGY	-
10000-ADVISORY COMMISSION ON SENTENCING	10150-TRAINING AND EMPLOYEE DEVELOPMENT	-
10000-ADVISORY COMMISSION ON SENTENCING	10150-TRAINING AND EMPLOYEE DEVELOPMENT	-
10000-ADVISORY COMMISSION ON SENTENCING	10600-LEGAL SERVICES	-
20000-ADVISORY COMMISSION ON SENTENCING	20100-ACS OFFENSE AND OFFENDER DATABASE	-
20000-ADVISORY COMMISSION ON SENTENCING	20400-POLICY REPORTS AND PROPOSALS	-
10000-ADVISORY COMMISSION ON SENTENCING	10100-PERSONNEL	-
20000-ADVISORY COMMISSION ON SENTENCING	20400-POLICY REPORTS AND PROPOSALS	-
AUDIT-YEAR END AUDIT ADJUSTMENT	AUDIT-AUDIT ADJUSTMENT	-
10000-ADVISORY COMMISSION ON SENTENCING	10200-CONTRACTING AND PROCUREMENT	-
10000-ADVISORY COMMISSION ON SENTENCING	20400-POLICY REPORTS AND PROPOSALS	-
10000-ADVISORY COMMISSION ON SENTENCING	20500-SENTENCING GUIDELINES TRAINING	-
10000-ADVISORY COMMISSION ON SENTENCING	10100-PERSONNEL	-
20000-ADVISORY COMMISSION ON SENTENCING	20200-SENTENCING GUIDELINES MONITORING	-
10000-ADVISORY COMMISSION ON SENTENCING	10100-PERSONNEL	-
10000-ADVISORY COMMISSION ON SENTENCING	10400-INFORMATION TECHNOLOGY	-
20000-ADVISORY COMMISSION ON SENTENCING	20400-POLICY REPORTS AND PROPOSALS	-
20000-ADVISORY COMMISSION ON SENTENCING	20400-POLICY REPORTS AND PROPOSALS	-
20000-ADVISORY COMMISSION ON SENTENCING	20400-POLICY REPORTS AND PROPOSALS	-
20000-ADVISORY COMMISSION ON SENTENCING	20400-POLICY REPORTS AND PROPOSALS	-
20000-ADVISORY COMMISSION ON SENTENCING	20500-SENTENCING GUIDELINES TRAINING	-
20000-ADVISORY COMMISSION ON SENTENCING	20500-SENTENCING GUIDELINES TRAINING	-
20000-ADVISORY COMMISSION ON SENTENCING	20100-ACS OFFENSE AND OFFENDER DATABASE	-
AUDIT-YEAR END AUDIT ADJUSTMENT	AUDIT-AUDIT ADJUSTMENT	-
10000-ADVISORY COMMISSION ON SENTENCING	10200-CONTRACTING AND PROCUREMENT	-
10000-ADVISORY COMMISSION ON SENTENCING	10150-TRAINING AND EMPLOYEE DEVELOPMENT	-
10000-ADVISORY COMMISSION ON SENTENCING	10600-LEGAL SERVICES	-
10000-ADVISORY COMMISSION ON SENTENCING	10150-TRAINING AND EMPLOYEE DEVELOPMENT	-

20000-ADVISORY COMMISSION ON SENTENCING	20500-SENTENCING GUIDELINES TRAINING	-
10000-ADVISORY COMMISSION ON SENTENCING	10100-PERSONNEL	-
20000-ADVISORY COMMISSION ON SENTENCING	20100-ACS OFFENSE AND OFFENDER DATABASE	-
20000-ADVISORY COMMISSION ON SENTENCING	20100-ACS OFFENSE AND OFFENDER DATABASE	-
20000-ADVISORY COMMISSION ON SENTENCING	20100-ACS OFFENSE AND OFFENDER DATABASE	-
20000-ADVISORY COMMISSION ON SENTENCING	20400-POLICY REPORTS AND PROPOSALS	-
20000-ADVISORY COMMISSION ON SENTENCING	20500-SENTENCING GUIDELINES TRAINING	-
10000-ADVISORY COMMISSION ON SENTENCING	10150-TRAINING AND EMPLOYEE DEVELOPMENT	-
10000-ADVISORY COMMISSION ON SENTENCING	10400-INFORMATION TECHNOLOGY	-
10000-ADVISORY COMMISSION ON SENTENCING	10000-MANAGEMENT	-
20000-ADVISORY COMMISSION ON SENTENCING	20400-POLICY REPORTS AND PROPOSALS	-
10000-ADVISORY COMMISSION ON SENTENCING	10100-PERSONNEL	-
20000-ADVISORY COMMISSION ON SENTENCING	20100-ACS OFFENSE AND OFFENDER DATABASE	-
20000-ADVISORY COMMISSION ON SENTENCING	20100-ACS OFFENSE AND OFFENDER DATABASE	-
20000-ADVISORY COMMISSION ON SENTENCING	20100-ACS OFFENSE AND OFFENDER DATABASE	-
20000-ADVISORY COMMISSION ON SENTENCING	20500-SENTENCING GUIDELINES TRAINING	-
10000-ADVISORY COMMISSION ON SENTENCING	10100-PERSONNEL	-
10000-ADVISORY COMMISSION ON SENTENCING	10000-MANAGEMENT	-
10000-ADVISORY COMMISSION ON SENTENCING	10300-PROPERTY MANAGEMENT	-
10000-ADVISORY COMMISSION ON SENTENCING	10150-TRAINING AND EMPLOYEE DEVELOPMENT	-
10000-ADVISORY COMMISSION ON SENTENCING	20400-POLICY REPORTS AND PROPOSALS	-
10000-ADVISORY COMMISSION ON SENTENCING	10100-PERSONNEL	-
10000-ADVISORY COMMISSION ON SENTENCING	10300-PROPERTY MANAGEMENT	-
10000-ADVISORY COMMISSION ON SENTENCING	10400-INFORMATION TECHNOLOGY	-
20000-ADVISORY COMMISSION ON SENTENCING	20100-ACS OFFENSE AND OFFENDER DATABASE	-
10000-ADVISORY COMMISSION ON SENTENCING	10100-PERSONNEL	-
10000-ADVISORY COMMISSION ON SENTENCING	10100-PERSONNEL	-
10000-ADVISORY COMMISSION ON SENTENCING	10100-PERSONNEL	-
10000-ADVISORY COMMISSION ON SENTENCING	10100-PERSONNEL	-
20000-ADVISORY COMMISSION ON SENTENCING	20100-ACS OFFENSE AND OFFENDER DATABASE	-
20000-ADVISORY COMMISSION ON SENTENCING	20400-POLICY REPORTS AND PROPOSALS	-
20000-ADVISORY COMMISSION ON SENTENCING	20400-POLICY REPORTS AND PROPOSALS	-
20000-ADVISORY COMMISSION ON SENTENCING	20500-SENTENCING GUIDELINES TRAINING	-
20000-ADVISORY COMMISSION ON SENTENCING	20500-SENTENCING GUIDELINES TRAINING	-
20000-ADVISORY COMMISSION ON SENTENCING	20600-PREP SENTENCING GUIDELINES MATERIALS	-
20000-ADVISORY COMMISSION ON SENTENCING	20500-SENTENCING GUIDELINES TRAINING	-
10000-ADVISORY COMMISSION ON SENTENCING	10000-MANAGEMENT	-
10000-ADVISORY COMMISSION ON SENTENCING	10600-LEGAL SERVICES	-
20000-ADVISORY COMMISSION ON SENTENCING	20100-ACS OFFENSE AND OFFENDER DATABASE	-
20000-ADVISORY COMMISSION ON SENTENCING	20100-ACS OFFENSE AND OFFENDER DATABASE	-
10000-ADVISORY COMMISSION ON SENTENCING	10100-PERSONNEL	-
20000-ADVISORY COMMISSION ON SENTENCING	20100-ACS OFFENSE AND OFFENDER DATABASE	-
20000-ADVISORY COMMISSION ON SENTENCING	20400-POLICY REPORTS AND PROPOSALS	-
20000-ADVISORY COMMISSION ON SENTENCING	20400-POLICY REPORTS AND PROPOSALS	-
20000-ADVISORY COMMISSION ON SENTENCING	20500-SENTENCING GUIDELINES TRAINING	-
20000-ADVISORY COMMISSION ON SENTENCING	20600-PREP SENTENCING GUIDELINES MATERIALS	-

10000-ADVISORY COMMISSION ON SENTENCING	10300-PROPERTY MANAGEMENT	-
10000-ADVISORY COMMISSION ON SENTENCING	10300-PROPERTY MANAGEMENT	-
10000-ADVISORY COMMISSION ON SENTENCING	10300-PROPERTY MANAGEMENT	-
10000-ADVISORY COMMISSION ON SENTENCING	10300-PROPERTY MANAGEMENT	-
10000-ADVISORY COMMISSION ON SENTENCING	10400-INFORMATION TECHNOLOGY	-
10000-ADVISORY COMMISSION ON SENTENCING	10100-PERSONNEL	-
10000-ADVISORY COMMISSION ON SENTENCING	10300-PROPERTY MANAGEMENT	-

Budget	Expenditures	Obligations	ID Expenditures	Available
0.00	0.00	0.00	0.00	0.00
0.00	173.12	0.00	0.00	-173.12
0.00	107.10	0.00	0.00	-107.10
0.00	0.00	0.00	3500.00	-3500.00
0.00	0.00	0.00	2000.00	-2000.00
0.00	0.00	0.00	-2860.00	2860.00
0.00	0.00	0.00	0.00	0.00
0.00	0.00	0.00	-2860.00	2860.00
0.31	0.00	0.00	0.00	0.31
0.00	0.00	0.00	-21930.00	21930.00
0.00	2384.79	0.00	0.00	-2384.79
0.00	39.74	0.00	0.00	-39.74
0.00	9590.49	0.00	0.00	-9590.49
0.00	344.87	0.00	0.00	-344.87
0.00	437.56	0.00	0.00	-437.56
0.00	0.00	0.00	2860.00	-2860.00
0.00	-1093.20	0.00	25.00	1068.20
23329.29	21892.28	0.00	-20037.00	21474.01
0.00	0.00	0.00	6000.00	-6000.00
0.00	6925.49	0.00	0.00	-6925.49
5500.00	0.00	0.00	0.00	5500.00
3360.00	1763.29	0.00	0.00	1596.71
1100.00	1093.20	0.00	0.00	6.80
0.00	78.44	0.00	0.00	-78.44
67787.53	69744.93	0.00	0.00	-1957.40
150516.44	138854.55	0.00	0.00	11661.89
0.00	0.00	0.00	16037.00	-16037.00
0.00	0.00	0.00	160.00	-160.00
0.00	0.00	0.00	1200.00	-1200.00
0.00	0.00	0.00	645.00	-645.00
6746.00	0.00	0.00	0.00	6746.00
391269.00	391202.00	0.00	0.00	67.00
5500.00	4171.86	0.00	0.00	1328.14
35501.00	32579.79	0.00	0.00	2921.21
35468.00	20000.00	0.00	0.00	15468.00
0.00	81.88	0.00	0.00	-81.88
0.00	17.13	0.00	0.00	-17.13
0.00	12128.20	0.00	0.00	-12128.20
0.00	11449.40	0.00	0.00	-11449.40
247290.14	237165.60	0.00	0.00	10124.54
0.00	0.00	0.00	-16037.00	16037.00
0.00	0.00	0.00	0.00	0.00
0.00	0.00	0.00	2500.00	-2500.00
0.00	1847.51	0.00	0.00	-1847.51
38286.00	32938.65	0.00	0.00	5347.35

0.00	2608.96	0.00	0.00	-2608.96
0.00	4248.05	0.00	0.00	-4248.05
0.00	132.05	0.00	0.00	-132.05
0.00	25790.99	0.00	0.00	-25790.99
0.00	175.62	0.00	0.00	-175.62
0.00	2878.66	0.00	0.00	-2878.66
0.00	2677.68	0.00	0.00	-2677.68
0.00	0.00	0.00	700.00	-700.00
0.00	0.00	0.00	3500.00	-3500.00
0.00	0.00	0.00	-1247.00	1247.00
0.00	39848.67	0.00	0.00	-39848.67
0.00	353.27	0.00	0.00	-353.27
61382.33	0.00	0.00	0.00	61382.33
0.00	519.04	0.00	0.00	-519.04
0.00	3731.07	0.00	0.00	-3731.07
0.00	106.45	0.00	0.00	-106.45
0.00	0.00	0.00	19037.00	-19037.00
0.00	0.00	0.00	-13.00	13.00
0.00	0.00	0.00	0.00	0.00
0.00	0.00	0.00	3600.00	-3600.00
0.00	0.00	0.00	600.00	-600.00
0.00	1284.70	0.00	0.00	-1284.70
5837.00	5837.04	0.00	0.00	-0.04
0.00	0.00	0.00	1247.00	-1247.00
0.00	6565.03	0.00	0.00	-6565.03
14423.28	0.00	0.00	0.00	14423.28
0.00	55.26	0.00	0.00	-55.26
0.00	993.49	0.00	0.00	-993.49
0.00	3487.31	0.00	0.00	-3487.31
0.00	1187.64	0.00	0.00	-1187.64
0.00	154.99	0.00	0.00	-154.99
0.00	187.57	0.00	0.00	-187.57
25560.00	0.00	0.00	0.00	25560.00
0.00	335.32	0.00	0.00	-335.32
8805.00	0.00	0.00	0.00	8805.00
122500.00	167262.34	0.00	0.00	-44762.34
0.00	0.00	0.00	-2000.00	2000.00
7464.00	6909.01	0.00	0.00	554.99
297114.00	292192.48	0.00	0.00	4921.52
0.00	23956.42	0.00	0.00	-23956.42
0.00	7561.14	0.00	0.00	-7561.14
0.00	15953.63	0.00	0.00	-15953.63
0.00	349.46	0.00	0.00	-349.46
0.00	9616.99	0.00	0.00	-9616.99
0.00	1403.63	0.00	0.00	-1403.63
68492.00	0.00	0.00	0.00	68492.00

0.00	0.00	0.00	13.00	-13.00
0.00	0.00	0.00	2860.00	-2860.00
0.00	0.00	0.00	0.00	0.00
0.00	0.00	0.00	-2500.00	2500.00
0.00	0.00	0.00	3000.00	-3000.00
6600.00	4084.26	0.00	0.00	2515.74
500.00	253.15	0.00	0.00	246.85
1,630,331.32	1,628,620.04	0	0	1,711.28

Agency	FZ0
Fund	(All)

Program	Program Description
100058	HUMAN RESOURCE SERVICES - GENERAL
100058 Total	
100092	LEGAL SERVICES - GENERAL
100092 Total	
100113	PROPERTY, ASSET, AND LOGISTICS MANAGEMENT - GENERAL
100113 Total	
800174	DATA SYSTEM - DEVELOPMENT & MONITORING
800174 Total	
800176	SENTENCING GUIDELINES - POLICY REPORTS, PROPOSALS, AND ANALYSIS
800176 Total	
800177	SENTENCING GUIDELINES - TRAINING
800177 Total	
Grand Total	

Data			
Sum of Revised Budget	Sum of Expenditure	Sum of Obligation	Sum of Available Budget
124,408.80	20,012.93	-	104,395.87
124,408.80	20,012.93	-	104,395.87
3,500.00	-	-	3,500.00
3,500.00	-	-	3,500.00
7,110.00	5,837.04	-	1,272.96
7,110.00	5,837.04	-	1,272.96
753,087.34	219,502.23	227,663.29	305,921.82
753,087.34	219,502.23	227,663.29	305,921.82
185,620.00	35,160.35	-	150,459.65
185,620.00	35,160.35	-	150,459.65
544,475.52	48,420.72	-	496,054.80
544,475.52	48,420.72	-	496,054.80
1,618,201.66	328,933.27	227,663.29	1,061,605.10

Account Category (Parent Level 3)	Account Category Description (Parent Level 3)
700000A	PERSONNEL SERVICES
700000A	PERSONNEL SERVICES
710000A	NON-PERSONNEL SERVICES
710000A	NON-PERSONNEL SERVICES
710000A	NON-PERSONNEL SERVICES
710000A	NON-PERSONNEL SERVICES
700000A	PERSONNEL SERVICES
700000A	PERSONNEL SERVICES
700000A	PERSONNEL SERVICES
710000A	NON-PERSONNEL SERVICES
710000A	NON-PERSONNEL SERVICES
700000A	PERSONNEL SERVICES
700000A	PERSONNEL SERVICES
700000A	PERSONNEL SERVICES
700000A	PERSONNEL SERVICES
700000A	PERSONNEL SERVICES
700000A	PERSONNEL SERVICES
700000A	PERSONNEL SERVICES
700000A	PERSONNEL SERVICES
700000A	PERSONNEL SERVICES
710000A	NON-PERSONNEL SERVICES
700000A	PERSONNEL SERVICES
710000A	NON-PERSONNEL SERVICES
700000A	PERSONNEL SERVICES
700000A	PERSONNEL SERVICES
700000A	PERSONNEL SERVICES
700000A	PERSONNEL SERVICES
710000A	NON-PERSONNEL SERVICES
710000A	NON-PERSONNEL SERVICES
710000A	NON-PERSONNEL SERVICES
710000A	NON-PERSONNEL SERVICES

700000A	PERSONNEL SERVICES
700000A	PERSONNEL SERVICES
700000A	PERSONNEL SERVICES
700000A	PERSONNEL SERVICES
700000A	PERSONNEL SERVICES
710000A	NON-PERSONNEL SERVICES
710000A	NON-PERSONNEL SERVICES
700000A	PERSONNEL SERVICES
700000A	PERSONNEL SERVICES
700000A	PERSONNEL SERVICES
710000A	NON-PERSONNEL SERVICES
700000A	PERSONNEL SERVICES
710000A	NON-PERSONNEL SERVICES
710000A	NON-PERSONNEL SERVICES
700000A	PERSONNEL SERVICES
710000A	NON-PERSONNEL SERVICES
700000A	PERSONNEL SERVICES
700000A	PERSONNEL SERVICES
700000A	PERSONNEL SERVICES
700000A	PERSONNEL SERVICES
710000A	NON-PERSONNEL SERVICES
710000A	NON-PERSONNEL SERVICES
700000A	PERSONNEL SERVICES
700000A	PERSONNEL SERVICES
700000A	PERSONNEL SERVICES
700000A	PERSONNEL SERVICES
700000A	PERSONNEL SERVICES
700000A	PERSONNEL SERVICES
700000A	PERSONNEL SERVICES
700000A	PERSONNEL SERVICES
710000A	NON-PERSONNEL SERVICES

Account Group (Parent Level 1)	Account Group (Parent Level 1) Description	Account
701400C	FRINGE BENEFITS - CURR PERSONNEL	7014008
701400C	FRINGE BENEFITS - CURR PERSONNEL	7014009
713100C	OTHER SERVICES & CHARGES	7131009
713100C	OTHER SERVICES & CHARGES	7131011
713100C	OTHER SERVICES & CHARGES	7131003
713100C	OTHER SERVICES & CHARGES	7131012
701400C	FRINGE BENEFITS - CURR PERSONNEL	7014003
701400C	FRINGE BENEFITS - CURR PERSONNEL	7014019
701400C	FRINGE BENEFITS - CURR PERSONNEL	7014003
713100C	OTHER SERVICES & CHARGES	7131002
713200C	CONTRACTUAL SERVICES - OTHER	7132002
701400C	FRINGE BENEFITS - CURR PERSONNEL	7014016
701400C	FRINGE BENEFITS - CURR PERSONNEL	7014002
701400C	FRINGE BENEFITS - CURR PERSONNEL	7014016
701400C	FRINGE BENEFITS - CURR PERSONNEL	7014015
701400C	FRINGE BENEFITS - CURR PERSONNEL	7014002
701400C	FRINGE BENEFITS - CURR PERSONNEL	7014015
701400C	FRINGE BENEFITS - CURR PERSONNEL	7014002
701400C	FRINGE BENEFITS - CURR PERSONNEL	7014020
713100C	OTHER SERVICES & CHARGES	7131009
701400C	FRINGE BENEFITS - CURR PERSONNEL	7014020
713100C	OTHER SERVICES & CHARGES	7131009
701400C	FRINGE BENEFITS - CURR PERSONNEL	7014015
701400C	FRINGE BENEFITS - CURR PERSONNEL	7014019
701400C	FRINGE BENEFITS - CURR PERSONNEL	7014019
701400C	FRINGE BENEFITS - CURR PERSONNEL	7014003
713100C	OTHER SERVICES & CHARGES	7131011
713100C	OTHER SERVICES & CHARGES	7131009
713200C	CONTRACTUAL SERVICES - OTHER	7132002
713100C	OTHER SERVICES & CHARGES	7131002

701400C	FRINGE BENEFITS - CURR PERSONNEL	7014008
701400C	FRINGE BENEFITS - CURR PERSONNEL	7014016
701400C	FRINGE BENEFITS - CURR PERSONNEL	7014015
701400C	FRINGE BENEFITS - CURR PERSONNEL	7014019
701400C	FRINGE BENEFITS - CURR PERSONNEL	7014009
713100C	OTHER SERVICES & CHARGES	7131015
713100C	OTHER SERVICES & CHARGES	7131012
701400C	FRINGE BENEFITS - CURR PERSONNEL	7014022
701400C	FRINGE BENEFITS - CURR PERSONNEL	7014009
701400C	FRINGE BENEFITS - CURR PERSONNEL	7014020
713200C	CONTRACTUAL SERVICES - OTHER	7132001
701100C	CONTINUING FULL TIME	7011001
717100C	PURCHASES EQUIPMENT & MACHINERY	7171003
713100C	OTHER SERVICES & CHARGES	7131017
701100C	CONTINUING FULL TIME	7011001
713200C	CONTRACTUAL SERVICES - OTHER	7132001
701400C	FRINGE BENEFITS - CURR PERSONNEL	7014022
701400C	FRINGE BENEFITS - CURR PERSONNEL	7014009
701400C	FRINGE BENEFITS - CURR PERSONNEL	7014022
701400C	FRINGE BENEFITS - CURR PERSONNEL	7014008
713100C	OTHER SERVICES & CHARGES	7131009
713100C	OTHER SERVICES & CHARGES	7131036
701100C	CONTINUING FULL TIME	7011001
701400C	FRINGE BENEFITS - CURR PERSONNEL	7014008
701100C	CONTINUING FULL TIME	7011001
701400C	FRINGE BENEFITS - CURR PERSONNEL	7014016
701400C	FRINGE BENEFITS - CURR PERSONNEL	7014002
701400C	FRINGE BENEFITS - CURR PERSONNEL	7014020
701400C	FRINGE BENEFITS - CURR PERSONNEL	7014003
711100C	SUPPLIES & MATERIALS	7111002

Account Description	Program (Parent Level)	Program (Parent Level 1) Description	Program
MISC FRINGE BENEFIT	AMP011	HUMAN RESOURCE SERVICES	100058
RETIREMENT CONTRIB	P03201	DATA SYSTEM - DEVELOPMENT &	800174
PROF SERVICE FEES &	AMP011	HUMAN RESOURCE SERVICES	100058
OFFICE SUPPORT	AMP011	HUMAN RESOURCE SERVICES	100058
TRAVEL - OUT OF CITY	P03201	DATA SYSTEM - DEVELOPMENT &	800174
PRINTING, DUPLICATI	P03204	SENTENCING GUIDELINES - TRAI	800177
HEALTH BENEFITS	AMP011	HUMAN RESOURCE SERVICES	100058
MEDICARE CONTRIBU	AMP011	HUMAN RESOURCE SERVICES	100058
HEALTH BENEFITS	P03203	SENTENCING GUIDELINES - POLI	800176
TRAVEL - LOCAL	AMP011	HUMAN RESOURCE SERVICES	100058
IT CONSULTANT CONT	P03201	DATA SYSTEM - DEVELOPMENT &	800174
DENTAL PLAN	P03201	DATA SYSTEM - DEVELOPMENT &	800174
GROUP LIFE INSURANC	P03204	SENTENCING GUIDELINES - TRAI	800177
DENTAL PLAN	P03203	SENTENCING GUIDELINES - POLI	800176
OPTICAL PLAN	P03203	SENTENCING GUIDELINES - POLI	800176
GROUP LIFE INSURANC	P03201	DATA SYSTEM - DEVELOPMENT &	800174
OPTICAL PLAN	P03201	DATA SYSTEM - DEVELOPMENT &	800174
GROUP LIFE INSURANC	AMP011	HUMAN RESOURCE SERVICES	100058
RETIREMENT	AMP011	HUMAN RESOURCE SERVICES	100058
PROF SERVICE FEES &	P03201	DATA SYSTEM - DEVELOPMENT &	800174
RETIREMENT	P03203	SENTENCING GUIDELINES - POLI	800176
PROF SERVICE FEES &	P03204	SENTENCING GUIDELINES - TRAI	800177
OPTICAL PLAN	AMP011	HUMAN RESOURCE SERVICES	100058
MEDICARE CONTRIBU	P03201	DATA SYSTEM - DEVELOPMENT &	800174
MEDICARE CONTRIBU	P03203	SENTENCING GUIDELINES - POLI	800176
HEALTH BENEFITS	P03204	SENTENCING GUIDELINES - TRAI	800177
OFFICE SUPPORT	AMP011	HUMAN RESOURCE SERVICES	100058
PROF SERVICE FEES &	AMP014	LEGAL SERVICES	100092
IT CONSULTANT CONT	P03201	DATA SYSTEM - DEVELOPMENT &	800174
TRAVEL - LOCAL	P03203	SENTENCING GUIDELINES - POLI	800176

MISC FRINGE BENEFIT	P03204	SENTENCING GUIDELINES - TRAI	800177
DENTAL PLAN	AMP011	HUMAN RESOURCE SERVICES	100058
OPTICAL PLAN	P03204	SENTENCING GUIDELINES - TRAI	800177
MEDICARE CONTRIBU	P03204	SENTENCING GUIDELINES - TRAI	800177
RETIREMENT CONTRIB	P03203	SENTENCING GUIDELINES - POLI	800176
ADVERTISING	AMP011	HUMAN RESOURCE SERVICES	100058
PRINTING, DUPLICATI	P03203	SENTENCING GUIDELINES - POLI	800176
DC HEALTH BENEFIT F	AMP011	HUMAN RESOURCE SERVICES	100058
RETIREMENT CONTRIB	P03204	SENTENCING GUIDELINES - TRAI	800177
RETIREMENT	P03201	DATA SYSTEM - DEVELOPMENT &	800174
CONTRACTUAL SERVI	AMP019	PROPERTY, ASSET, AND LOGISTIC	100113
CONTINUING FULL TIM	AMP011	HUMAN RESOURCE SERVICES	100058
PURCHASES EQUIPME	AMP011	HUMAN RESOURCE SERVICES	100058
POSTAGE	AMP019	PROPERTY, ASSET, AND LOGISTIC	100113
CONTINUING FULL TIM	P03201	DATA SYSTEM - DEVELOPMENT &	800174
CONTRACTUAL SERVI	P03201	DATA SYSTEM - DEVELOPMENT &	800174
DC HEALTH BENEFIT F	P03204	SENTENCING GUIDELINES - TRAI	800177
RETIREMENT CONTRIB	AMP011	HUMAN RESOURCE SERVICES	100058
DC HEALTH BENEFIT F	P03201	DATA SYSTEM - DEVELOPMENT &	800174
MISC FRINGE BENEFIT	P03201	DATA SYSTEM - DEVELOPMENT &	800174
PROF SERVICE FEES &	P03201	DATA SYSTEM - DEVELOPMENT &	800174
IT SOFTWARE MAINTEN	P03201	DATA SYSTEM - DEVELOPMENT &	800174
CONTINUING FULL TIM	P03203	SENTENCING GUIDELINES - POLI	800176
MISC FRINGE BENEFIT	P03203	SENTENCING GUIDELINES - POLI	800176
CONTINUING FULL TIM	P03204	SENTENCING GUIDELINES - TRAI	800177
DENTAL PLAN	P03204	SENTENCING GUIDELINES - TRAI	800177
GROUP LIFE INSURANC	P03203	SENTENCING GUIDELINES - POLI	800176
RETIREMENT	P03204	SENTENCING GUIDELINES - TRAI	800177
HEALTH BENEFITS	P03201	DATA SYSTEM - DEVELOPMENT &	800174
OFFICE SUPPLIES	AMP011	HUMAN RESOURCE SERVICES	100058

Program Description	Cost Center (Parent Le	Cost Center (Parent Le	Cost Center (Parent Level
HUMAN RESOURCE SE	PS067		OFFICE OF THE DIRECTOR
DATA SYSTEM - DEVE	PS066		OFFICE OF THE DC SENTENCING COMMISION
HUMAN RESOURCE SE	PS067		OFFICE OF THE DIRECTOR
HUMAN RESOURCE SE	PS067		OFFICE OF THE DIRECTOR
DATA SYSTEM - DEVE	PS066		OFFICE OF THE DC SENTENCING COMMISION
SENTENCING GUIDELI	PS066		OFFICE OF THE DC SENTENCING COMMISION
HUMAN RESOURCE SE	PS067		OFFICE OF THE DIRECTOR
HUMAN RESOURCE SE	PS067		OFFICE OF THE DIRECTOR
SENTENCING GUIDELI	PS066		OFFICE OF THE DC SENTENCING COMMISION
HUMAN RESOURCE SE	PS067		OFFICE OF THE DIRECTOR
DATA SYSTEM - DEVE	PS066		OFFICE OF THE DC SENTENCING COMMISION
DATA SYSTEM - DEVE	PS066		OFFICE OF THE DC SENTENCING COMMISION
SENTENCING GUIDELI	PS066		OFFICE OF THE DC SENTENCING COMMISION
SENTENCING GUIDELI	PS066		OFFICE OF THE DC SENTENCING COMMISION
SENTENCING GUIDELI	PS066		OFFICE OF THE DC SENTENCING COMMISION
DATA SYSTEM - DEVE	PS066		OFFICE OF THE DC SENTENCING COMMISION
DATA SYSTEM - DEVE	PS066		OFFICE OF THE DC SENTENCING COMMISION
HUMAN RESOURCE SE	PS067		OFFICE OF THE DIRECTOR
HUMAN RESOURCE SE	PS067		OFFICE OF THE DIRECTOR
DATA SYSTEM - DEVE	PS066		OFFICE OF THE DC SENTENCING COMMISION
SENTENCING GUIDELI	PS066		OFFICE OF THE DC SENTENCING COMMISION
SENTENCING GUIDELI	PS066		OFFICE OF THE DC SENTENCING COMMISION
HUMAN RESOURCE SE	PS067		OFFICE OF THE DIRECTOR
DATA SYSTEM - DEVE	PS066		OFFICE OF THE DC SENTENCING COMMISION
SENTENCING GUIDELI	PS066		OFFICE OF THE DC SENTENCING COMMISION
SENTENCING GUIDELI	PS066		OFFICE OF THE DC SENTENCING COMMISION
HUMAN RESOURCE SE	PS067		OFFICE OF THE DIRECTOR
LEGAL SERVICES - GE	PS067		OFFICE OF THE DIRECTOR
DATA SYSTEM - DEVE	PS066		OFFICE OF THE DC SENTENCING COMMISION
SENTENCING GUIDELI	PS066		OFFICE OF THE DC SENTENCING COMMISION

SENTENCING GUIDELI	PS066	OFFICE OF THE DC SENTENCING COMMISION
HUMAN RESOURCE SE	PS067	OFFICE OF THE DIRECTOR
SENTENCING GUIDELI	PS066	OFFICE OF THE DC SENTENCING COMMISION
SENTENCING GUIDELI	PS066	OFFICE OF THE DC SENTENCING COMMISION
SENTENCING GUIDELI	PS066	OFFICE OF THE DC SENTENCING COMMISION
HUMAN RESOURCE SE	PS067	OFFICE OF THE DIRECTOR
SENTENCING GUIDELI	PS066	OFFICE OF THE DC SENTENCING COMMISION
HUMAN RESOURCE SE	PS067	OFFICE OF THE DIRECTOR
SENTENCING GUIDELI	PS066	OFFICE OF THE DC SENTENCING COMMISION
DATA SYSTEM - DEVE	PS066	OFFICE OF THE DC SENTENCING COMMISION
PROPERTY, ASSET, AN	PS067	OFFICE OF THE DIRECTOR
HUMAN RESOURCE SE	PS067	OFFICE OF THE DIRECTOR
HUMAN RESOURCE SE	PS067	OFFICE OF THE DIRECTOR
PROPERTY, ASSET, AN	PS067	OFFICE OF THE DIRECTOR
DATA SYSTEM - DEVE	PS066	OFFICE OF THE DC SENTENCING COMMISION
DATA SYSTEM - DEVE	PS066	OFFICE OF THE DC SENTENCING COMMISION
SENTENCING GUIDELI	PS066	OFFICE OF THE DC SENTENCING COMMISION
HUMAN RESOURCE SE	PS067	OFFICE OF THE DIRECTOR
DATA SYSTEM - DEVE	PS066	OFFICE OF THE DC SENTENCING COMMISION
DATA SYSTEM - DEVE	PS066	OFFICE OF THE DC SENTENCING COMMISION
DATA SYSTEM - DEVE	PS066	OFFICE OF THE DC SENTENCING COMMISION
DATA SYSTEM - DEVE	PS066	OFFICE OF THE DC SENTENCING COMMISION
DATA SYSTEM - DEVE	PS066	OFFICE OF THE DC SENTENCING COMMISION
SENTENCING GUIDELI	PS066	OFFICE OF THE DC SENTENCING COMMISION
SENTENCING GUIDELI	PS066	OFFICE OF THE DC SENTENCING COMMISION
SENTENCING GUIDELI	PS066	OFFICE OF THE DC SENTENCING COMMISION
SENTENCING GUIDELI	PS066	OFFICE OF THE DC SENTENCING COMMISION
SENTENCING GUIDELI	PS066	OFFICE OF THE DC SENTENCING COMMISION
SENTENCING GUIDELI	PS066	OFFICE OF THE DC SENTENCING COMMISION
DATA SYSTEM - DEVE	PS066	OFFICE OF THE DC SENTENCING COMMISION
HUMAN RESOURCE SE	PS067	OFFICE OF THE DIRECTOR

Cost Center (Parent Level 2) Description	Cost Center	Cost Center Description	Project
	80248	OFFICE OF THE DIRECTOR	000000
	80247	OFFICE OF THE DC SENTEN	000000
	80248	OFFICE OF THE DIRECTOR	000000
	80248	OFFICE OF THE DIRECTOR	000000
	80247	OFFICE OF THE DC SENTEN	000000
	80247	OFFICE OF THE DC SENTEN	000000
	80248	OFFICE OF THE DIRECTOR	000000
	80248	OFFICE OF THE DIRECTOR	000000
	80247	OFFICE OF THE DC SENTEN	000000
	80248	OFFICE OF THE DIRECTOR	000000
	80247	OFFICE OF THE DC SENTEN	400257
	80247	OFFICE OF THE DC SENTEN	000000
	80247	OFFICE OF THE DC SENTEN	000000
	80247	OFFICE OF THE DC SENTEN	000000
	80247	OFFICE OF THE DC SENTEN	000000
	80247	OFFICE OF THE DC SENTEN	000000
	80247	OFFICE OF THE DC SENTEN	000000
	80247	OFFICE OF THE DC SENTEN	000000
	80248	OFFICE OF THE DIRECTOR	000000
	80248	OFFICE OF THE DIRECTOR	000000
	80247	OFFICE OF THE DC SENTEN	401247
	80247	OFFICE OF THE DC SENTEN	000000
	80247	OFFICE OF THE DC SENTEN	000000
	80248	OFFICE OF THE DIRECTOR	000000
	80247	OFFICE OF THE DC SENTEN	000000
	80247	OFFICE OF THE DC SENTEN	000000
	80247	OFFICE OF THE DC SENTEN	000000
	80248	OFFICE OF THE DIRECTOR	400762
	80248	OFFICE OF THE DIRECTOR	000000
	80247	OFFICE OF THE DC SENTEN	400259
	80247	OFFICE OF THE DC SENTEN	000000

	80247	OFFICE OF THE DC SENTEN	000000
	80248	OFFICE OF THE DIRECTOR	000000
	80247	OFFICE OF THE DC SENTEN	000000
	80247	OFFICE OF THE DC SENTEN	000000
	80247	OFFICE OF THE DC SENTEN	000000
	80248	OFFICE OF THE DIRECTOR	000000
	80247	OFFICE OF THE DC SENTEN	000000
	80248	OFFICE OF THE DIRECTOR	000000
	80247	OFFICE OF THE DC SENTEN	000000
	80247	OFFICE OF THE DC SENTEN	000000
	80248	OFFICE OF THE DIRECTOR	000000
	80248	OFFICE OF THE DIRECTOR	000000
	80248	OFFICE OF THE DIRECTOR	000000
	80247	OFFICE OF THE DC SENTEN	000000
	80247	OFFICE OF THE DC SENTEN	000000
	80247	OFFICE OF THE DC SENTEN	000000
	80248	OFFICE OF THE DIRECTOR	000000
	80247	OFFICE OF THE DC SENTEN	000000
	80247	OFFICE OF THE DC SENTEN	000000
	80247	OFFICE OF THE DC SENTEN	400258
	80247	OFFICE OF THE DC SENTEN	000000
	80247	OFFICE OF THE DC SENTEN	000000
	80247	OFFICE OF THE DC SENTEN	000000
	80247	OFFICE OF THE DC SENTEN	000000
	80247	OFFICE OF THE DC SENTEN	000000
	80247	OFFICE OF THE DC SENTEN	000000
	80247	OFFICE OF THE DC SENTEN	000000
	80248	OFFICE OF THE DIRECTOR	000000

Project Description	Award	Award Description
NO PROJECT	0000000	NO AWARD
NO PROJECT	0000000	NO AWARD
NO PROJECT	0000000	NO AWARD
NO PROJECT	0000000	NO AWARD
NO PROJECT	0000000	NO AWARD
NO PROJECT	0000000	NO AWARD
NO PROJECT	0000000	NO AWARD
NO PROJECT	0000000	NO AWARD
NO PROJECT	0000000	NO AWARD
NO PROJECT	0000000	NO AWARD
NO PROJECT	0000000	NO AWARD
FZ0.AIMFZ1.FY23-IT ASSESSMENT	1000068	FZ0.0100.LOCAL FUNDS
NO PROJECT	0000000	NO AWARD
NO PROJECT	0000000	NO AWARD
NO PROJECT	0000000	NO AWARD
NO PROJECT	0000000	NO AWARD
NO PROJECT	0000000	NO AWARD
NO PROJECT	0000000	NO AWARD
NO PROJECT	0000000	NO AWARD
NO PROJECT	0000000	NO AWARD
NO PROJECT	0000000	NO AWARD
FZ0 - RTS DC NET	1000385	FZ0- RTS DC NET
NO PROJECT	0000000	NO AWARD
NO PROJECT	0000000	NO AWARD
NO PROJECT	0000000	NO AWARD
NO PROJECT	0000000	NO AWARD
NO PROJECT	0000000	NO AWARD
NO PROJECT	0000000	NO AWARD
FZ0.PX0FZ0.FY23 DCSC PCARD	1000198	FZ0.0100.FY23 DCSC PCAF
NO PROJECT	0000000	NO AWARD
FZ0.ISUFZ1.FY23-IT ASSESSMENT	1000068	FZ0.0100.LOCAL FUNDS
NO PROJECT	0000000	NO AWARD

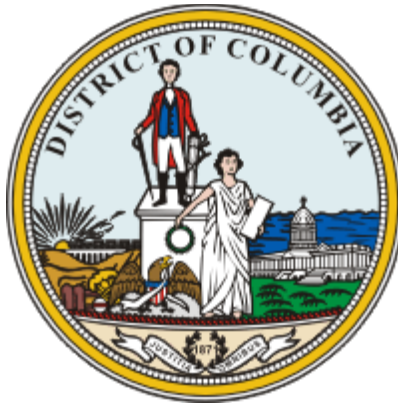
Initial Budget	Revised Budget	Commitment	Obligation	Expenditure	Available Budget
\$13,963.00	\$13,963.00	\$0.00	\$0.00	\$0.00	\$13,963.00
\$0.00	\$0.00	\$0.00	\$0.00	\$3,389.65	-\$3,389.65
\$7,066.00	\$7,066.00	\$0.00	\$0.00	\$0.00	\$7,066.00
\$19,750.00	\$0.00	\$0.00	\$0.00	\$10.85	-\$10.85
\$6,500.00	\$6,500.00	\$0.00	\$0.00	\$0.00	\$6,500.00
\$3,000.00	\$3,000.00	\$0.00	\$0.00	\$0.00	\$3,000.00
\$0.00	\$0.00	\$0.00	\$0.00	\$1,834.33	-\$1,834.33
\$0.00	\$0.00	\$0.00	\$0.00	\$202.80	-\$202.80
\$0.00	\$0.00	\$0.00	\$0.00	\$192.83	-\$192.83
\$6,000.00	\$6,000.00	\$0.00	\$0.00	\$513.71	\$5,486.29
\$900.00	\$900.00	\$0.00	\$665.72	\$109.88	\$124.40
\$0.00	\$0.00	\$0.00	\$0.00	\$126.53	-\$126.53
\$0.00	\$0.00	\$0.00	\$0.00	\$23.95	-\$23.95
\$0.00	\$0.00	\$0.00	\$0.00	\$36.99	-\$36.99
\$0.00	\$0.00	\$0.00	\$0.00	\$19.83	-\$19.83
\$0.00	\$0.00	\$0.00	\$0.00	\$33.69	-\$33.69
\$0.00	\$0.00	\$0.00	\$0.00	\$42.68	-\$42.68
\$0.00	\$0.00	\$0.00	\$0.00	\$8.68	-\$8.68
\$0.00	\$0.00	\$0.00	\$0.00	\$729.83	-\$729.83
\$0.00	\$800.00	\$0.00	\$0.00	\$0.00	\$800.00
\$0.00	\$0.00	\$0.00	\$0.00	\$588.22	-\$588.22
\$50,000.00	\$50,000.00	\$0.00	\$0.00	\$0.00	\$50,000.00
\$0.00	\$0.00	\$0.00	\$0.00	\$11.87	-\$11.87
\$0.00	\$0.00	\$0.00	\$0.00	\$792.75	-\$792.75
\$0.00	\$0.00	\$0.00	\$0.00	\$467.31	-\$467.31
\$0.00	\$0.00	\$0.00	\$0.00	\$3,082.10	-\$3,082.10
\$0.00	\$19,750.00	\$0.00	\$0.00	\$0.00	\$19,750.00
\$3,500.00	\$3,500.00	\$0.00	\$0.00	\$0.00	\$3,500.00
\$2,002.08	\$2,002.08	\$0.00	\$0.00	\$0.00	\$2,002.08
\$3,500.00	\$3,500.00	\$0.00	\$0.00	\$0.00	\$3,500.00

\$85,535.52	\$85,535.52	\$0.00	\$0.00	\$0.00	\$85,535.52
\$0.00	\$0.00	\$0.00	\$0.00	\$36.99	-\$36.99
\$0.00	\$0.00	\$0.00	\$0.00	\$23.73	-\$23.73
\$0.00	\$0.00	\$0.00	\$0.00	\$569.36	-\$569.36
\$0.00	\$0.00	\$0.00	\$0.00	\$1,801.19	-\$1,801.19
\$0.00	\$0.00	\$0.00	\$0.00	\$62.97	-\$62.97
\$4,544.00	\$4,544.00	\$0.00	\$0.00	\$0.00	\$4,544.00
\$0.00	\$0.00	\$0.00	\$0.00	\$75.49	-\$75.49
\$0.00	\$0.00	\$0.00	\$0.00	\$2,434.47	-\$2,434.47
\$0.00	\$0.00	\$0.00	\$0.00	\$2,009.12	-\$2,009.12
\$6,500.00	\$6,500.00	\$0.00	\$0.00	\$5,837.04	\$662.96
\$67,129.80	\$67,129.80	\$0.00	\$0.00	\$14,596.33	\$52,533.47
\$5,500.00	\$5,500.00	\$0.00	\$0.00	\$585.50	\$4,914.50
\$610.00	\$610.00	\$0.00	\$0.00	\$0.00	\$610.00
\$265,784.16	\$265,784.16	\$0.00	\$0.00	\$57,121.94	\$208,662.22
\$367,939.00	\$367,939.00	\$0.00	\$216,997.57	\$108,363.33	\$42,578.10
\$0.00	\$0.00	\$0.00	\$0.00	\$82.01	-\$82.01
\$0.00	\$0.00	\$0.00	\$0.00	\$867.14	-\$867.14
\$0.00	\$0.00	\$0.00	\$0.00	\$292.28	-\$292.28
\$55,283.11	\$55,283.11	\$0.00	\$0.00	\$0.00	\$55,283.11
\$14,050.00	\$13,250.00	\$0.00	\$10,000.00	\$0.00	\$3,250.00
\$40,628.99	\$40,628.99	\$0.00	\$0.00	\$40,628.99	\$0.00
\$147,000.00	\$147,000.00	\$0.00	\$0.00	\$32,035.29	\$114,964.71
\$30,576.00	\$30,576.00	\$0.00	\$0.00	\$0.00	\$30,576.00
\$405,940.00	\$405,940.00	\$0.00	\$0.00	\$40,432.39	\$365,507.61
\$0.00	\$0.00	\$0.00	\$0.00	\$73.99	-\$73.99
\$0.00	\$0.00	\$0.00	\$0.00	\$18.69	-\$18.69
\$0.00	\$0.00	\$0.00	\$0.00	\$1,698.72	-\$1,698.72
\$0.00	\$0.00	\$0.00	\$0.00	\$6,591.39	-\$6,591.39
\$5,000.00	\$5,000.00	\$0.00	\$0.00	\$476.44	\$4,523.56
\$1,618,201.66	\$1,618,201.66	\$0.00	\$227,663.29	\$328,933.27	\$1,061,605.10



DISTRICT OF COLUMBIA
SENTENCING COMMISSION

AGENCY CONTINUITY OF OPERATIONS PLAN



Updated: February 2, 2023

DISTRICT OF COLUMBIA SENTENCING COMMISSION
441 FOURTH STREET, NW, SUITE 430 SOUTH
WASHINGTON, D.C. 20001
PHONE: (202) 727-8822 FACSIMILE: (202) 727-7929
WEBSITE: <http://sentencing.dc.gov>

TABLE OF CONTENTS

SECTION 1: INTRODUCTION4

SECTION 2: COOP BACKGROUND INFORMATION.....4

 2.1 Agency Background.....4

 2.2 Sentencing Commission Staff Members.....5

 2.3 Organizational Structure5

 2.4 Sentencing Commission Staff Members Contact Information6

 2.5 Operational Data System6

 2.6 Purpose.....6

SECTION 3: ESSENTIAL FUNCTIONS7

 3.1 Prioritizing Key Functions.....7

SECTION 4: COOP INFORMATION.....8

 4.1 COOP Requirements.....8

 4.2 COOP Emergency Type Categories9

SECTION 5: OPERATION OF THE COOP PLAN.....10

 5.1 Phase 1- Activation Plan and Procedure.....10

 5.2 Phase 2- Activation Plan and Procedure for Alternative Facility/Location of
 Operation.....11

 5.3 Phase 3- Reconstruction (Termination of COOP Operations and Return to Normal
 Operations).....11

SECTION 6: MAINTENANCE AND AUTHORITY12

 6.1 COOP Maintenance12

 6.2 COOP Test, Training, and Exercise (TT&E) Program.....12

 6.3 The District of Columbia Sentencing Commission performs TT&E events at regular
 intervals, as shown in the table below12

SECTION 1: INTRODUCTION

As events such as the September 11, 2001 terrorist attacks, the 2017 Gulf Coast Hurricane Harvey, and the COVID-19 Pandemic have demonstrated, an emergency or disaster can occur suddenly and impact a broad range of individuals and entities. The District of Columbia Sentencing Commission (SCDC or the Commission) is not immune from the impacts of such events. Additionally, SCDC's essential duties do not cease upon the occurrence of an emergency or disaster. As a result, the District of Columbia Sentencing Commission developed and implemented a Continuity of Operations (COOP) plan to prepare for various emergencies and disasters that may affect its operations and duties.

An important element in preparing for such emergencies and disasters is addressing the continued performance of essential functions in the event normal operations at the Sentencing Commission's primary facility are disrupted. A well-designed and comprehensive COOP plan can ensure agency personnel, facilities, and systems are prepared to respond to the initial impact of an emergency or disaster, as well as identify alternate locations to provide the infrastructure required to continue operations.

SECTION 2: COOP BACKGROUND INFORMATION

2.1 Agency Background

In 1997, the United States Congress enacted the National Capital Revitalization and Self-Government Improvement Act of 1997 (the "Revitalization Act"), which laid the groundwork for sweeping changes in the District of Columbia's (the District) criminal justice system. This legislation created the Truth in Sentencing Commission and directed the Commission to formulate recommendations regarding the sentences for felonies committed in the District on or after August 5, 2000. The Advisory Commission on Sentencing conducted extensive research on criminal sentencing in the District, and presented its report to the D.C. City Council (the Council), recommending important changes. These changes included a shift from indeterminate to determinate sentencing for all felony offenses and the abolition of parole, substituting a period of supervised release following incarceration. The Commission also recommended that the District consider adopting a structured sentencing system as a way to promote fairness under the new determinate system. The Council adopted these recommendations in the Sentencing Reform Act of 2000, directing the Commission to research whether some form of structured sentencing would serve the needs of the District's criminal justice system and, if so, to recommend the type of structured sentencing system that would work best.

In 2003, the Commission recommended the adoption of voluntary sentencing guidelines for the District of Columbia. This recommendation was made, in part, to address variability in sentencing practices and to reduce unwanted disparity in the sentencing of similarly situated offenders convicted of similar crimes. The Commission recommended voluntary rather than presumptive or mandatory guidelines for several reasons. First, it was predicted that voluntary guidelines would be effective in achieving a high degree of compliance while avoiding time-consuming and expensive litigation. Second, a voluntary system would be less rigid than a

presumptive or mandatory one, preserving judges’ discretion to impose fair sentences in individual cases. Finally, a voluntary system would allow the Commission to adjust the guidelines in response to any unforeseen future sentencing issues. In 2004, the Council recognized the Voluntary Sentencing Guidelines (VSG or the Guidelines) and directed the Commission to assist the Superior Court in implementing them as a pilot program. The Guidelines became permanent in 2006.

The Commission’s mission is to implement, monitor, and support the Guidelines, to promote fair and consistent sentencing policies, to increase public understanding of sentencing policies and practices, to evaluate the effectiveness of the Guidelines in order to recommend changes based on actual sentencing and corrections practice.

Throughout its tenure, the Commission has worked to improve sentencing policies and practices in the District of Columbia. The Commission has employed a data driven policy approach to modifying the sentencing guidelines since the implementation of the agency’s Guidelines Reporting Information Data (GRID) system. The GRID system enables the agency to monitor, analyze and compute judicial compliance with the Guidelines for all felony sentences imposed in the District ensuring effective and fair sentencing practices.

2.2 Sentencing Commission Staff Members

As of February 2, 2023, the Sentencing Commission staff consisted of:

Linden Fry
Executive Director

Maeghan Buckley
Attorney Advisor

Taylor Tarnalicki
Statistician

Mia Hebb
Staff Assistant

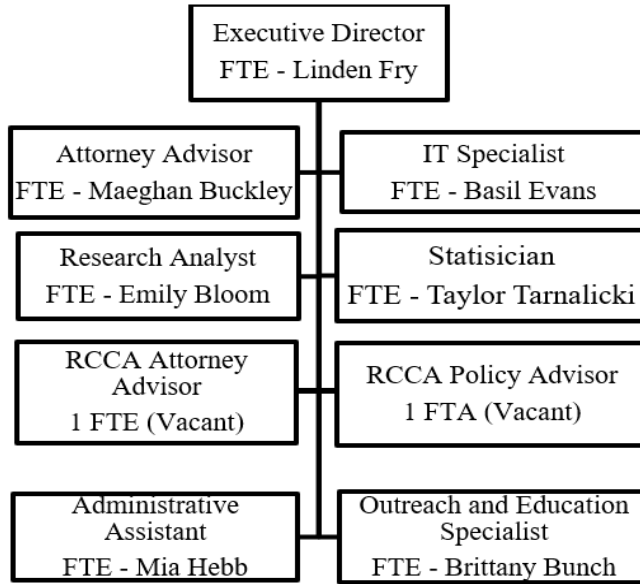
Basil Evans
IT Specialist

Emily Bloom
Research Analyst

Brittany Bunch
Outreach Specialist

2.3 Organizational Structure

Sentencing Commission Organizational Chart



2.4 Commission Staff Members Contact Information:

NAME	TITLE	PHONE (w)	PHONE (c)	EMAIL
Linden Fry	Executive Director	(202) 727-8821	(202) 494-5635	Linden.Fry@dc.gov
Maeghan Buckley	Attorney Advisor	(202) 727-7934	(603) 560-5987	Maeghan.Buckley@dc.gov
Mia Hebb	Executive Assistant	(202) 727-8822	(240) 308-2730	Mia.Hebb@dc.gov
Basil Evans	IT Specialist	(202) 727-0108	(202) 509-5228	Basil.Evans@dc.gov
Taylor Tarnalicki	Statistician	(202) 727-8822	(443) 683-3359	Taylor.Tarnalicki@dc.gov
Emily Bloom	Research Analyst	(202) 727-0641	(508) 745-7293	Emily.Bloom@dc.gov
Brittany Bunch	Outreach Specialist	(202) 727-7428	(202) 256-6963	Brittany.Bunch@dc.gov

2.5 Operational Data System

The development, by MindCube Inc., of the GRID system has significantly improved the Commission's ability to analyze sentencing-related data comprehensively and efficiently. The system allows the Commission to systematically monitor all felony sentences imposed and to calculate Guideline compliance in order to promote certainty and consistency in sentencing. The GRID system consumes data from three sources: the D.C. Superior Court (the Court), the Court Services and Offender Supervision Agency (CSOSA), and individual Superior Court judges. The D.C. Superior Court provides the Commission with all offense, disposition, and sentencing-related data through a daily electronic transmission. CSOSA provides the offender criminal history information through the Guideline Scoring System (GSS). Finally, individual judges contribute information relating to felony cases that Commission staff initially classify as non-compliant with the Guidelines.

The Commission's servers are hosted by the District of Columbia Office of the Chief Technology Officer (OCTO). OCTO provides virtual servers for the agency, as well as back-up and recovery services for the GRID system. There are two data system hosting locations run by OCTO. The nearest location is located at Benning Road, North East Washington D.C. The second location is Reston, Virginia. SCDC's server (ODC3) currently resides at the Reston, Virginia location.

2.6 Purpose

The Commission is committed to the safety and protection of its employees, operations, and facility. This plan provides the agency and its personnel with a framework that is designed to minimize potential safety impacts in the event of an emergency. In addition, the Commission is committed to ensuring that the agency can safely and promptly resume normal agency operations after an emergency. While the severity and consequences of an emergency cannot be predicted, effective contingency planning may minimize an emergency's impact on the Commission's mission, personnel and facilities.

The purpose of the COOP plan is to ensure that the Commission will continue to execute the essential functions necessary to carry out the agency's mission, which include measuring and calculating judiciary compliance, conducting statistical data analysis and undertaking empirical research, responding to data requests, replying to Guideline questions, and preparing analytical reports during and/or after a broad spectrum of emergencies.

The objectives of this COOP include:

- Ensuring the safety of the agency's employees and customers;
- Ensuring the continuous performance of the agency's essential functions/operations during an emergency;
- Protecting essential facilities, equipment, records, and other assets;
- Reducing or mitigating disruptions to agency operations;
- Achieving a timely and orderly recovery from an emergency and resumption of full service to customers; and

- Complying with legal and statutory requirements.

How well a COOP is designed and implemented will help to determine the success of response, resumption, recovery, and restoration of operations following an emergency.

SECTION 3: ESSENTIAL FUNCTIONS

The Commission has two primary statutory responsibilities: (1) to monitor the implementation and use of the Guidelines; and (2) to review and analyze data on sentencing practices and trends in the District. As part of its mandate, the Commission is responsible for collecting data from the Court and CSOSA in order to identify and address issues and assess compliance with the Guidelines, and to monitor historical and emerging sentencing trends. The Commission is also required to incorporate into the Guideline structure each new felony offense or sentencing provision enacted by the Council.

3.1 Prioritizing Key Functions

The Commission's key functions can be broken into 3 categories: *Critical, Crucial, and Necessary*.

Critical

Critical Key Functions within the Commission can be defined as:

- Monitoring the implementation and use of the Guidelines;
- Reviewing and analyzing data on sentencing practices and trends in the District;
- Conducting moderately complex research and statistical analysis of felony sentencing related issues; and
- Measuring judicial compliance with the Guidelines utilizing multiple criminal justice sources and systems:
 - Operational system (GRID System)
 - Accessing system (Internet, Computer, VPN access etc.)
 - Counterparts systems which include:
 - GSS (which is part of the GRID system), CSOSA, Courts, and IJIS 12.1.

Crucial

Crucial Key Functions within the Commission can be defined as:

- Assisting in the management, completion and review of agency data requests;
- Filing a report with the Council on or before April 30th of each calendar year that contains analyses of the sentences imposed in the preceding calendar year; and
- Providing subject-matter expertise while responding to Guideline questions.
 - Guideline Questions
 - Annual reports
 - Data Request Responses

Necessary

Necessary Key Functions within the Sentencing Commission can be defined as:

- Preparing written narrative, analytical reports, research work plans, literature reviews, memos summarizing research findings, data tables and graphs, PowerPoint presentations;
- Publishing a manual containing the instructions for applying the Guidelines;
- Conducting focus groups, community outreach, training, and other activities designed to collect and disseminate information about the guidelines; and
- Providing ongoing technical assistance to the Court and practitioners on sentencing and Guideline issues.
 - Reports (analytical reports and publication as necessary)
 - Guideline Manuals
 - Training

SECTION 4: COOP INFORMATION

4.1 COOP Requirements

This plan applies to all Commission employees for the full spectrum of man-made, natural, and technological emergencies and threats. This plan will be activated and implemented when an event impacts the employees and vendors (including Mindcubed, Inc.) of the agency or could force the relocation of the Commission employees and vendors.

COOP planning is an effort to ensure the continued performance of minimum essential functions during a wide range of potential emergencies. This is accomplished through the development of plans, comprehensive procedures, and provisions for alternate facilities/locations, personnel, resources, and interoperable communications, and vital records/ databases back-up and duplication.

The Commission, at a minimum will:

- Implement COOP plan with and without warning;
- Be operational within a minimal period of disruption for essential functions, but in all cases within 24-48 hours of COOP activation;
- Be capable of maintaining sustained operations for up to 30 days;
- Regularly test, train, and exercise the agency's personnel, equipment, systems, processes, and procedures used to support the agency during a COOP event;
- Conduct a risk analysis of current and alternate operating facilities/locations;
- Provide staff with IT equipment that allows them remote system access from home.
- Locate alternate operating facilities/locations in areas where the ability to initiate, maintain, and terminate continuity of operations is maximized;
- Consider the distance of alternate operating facilities/locations from the primary facility and from the threat of any other facilities/locations (e.g., nuclear power plants or areas subject to frequent natural disasters);

- Include the development, maintenance, and annual review of the agency’s COOP capabilities;
- Consider locating alternate operating facilities/locations in areas where power, telecommunications, and internet grid would be distinct from those of the primary facility; and
- Take maximum advantage of existing agency infrastructures and give consideration to other options, such as telecommuting locations, work-at-home, virtual offices, and joint and shared facilities;

4.2 COOP Emergency Type Categories

The Commission must be prepared to handle at least three types of emergencies: localized emergencies requiring relocation to an alternate site; widespread emergencies requiring relocation to an alternate site; and widespread emergencies NOT requiring relocation to an alternate site.

These emergencies and corresponding COOP considerations are outlined below:

1. Localized Emergency Requiring Relocation to Alternate Site (e.g., structural, fire, water damage, etc.)

- A District government building sustained damage
- All other city government buildings are not affected
- COOP alternate sites are available
- The building is currently closed for normal business activities, but the incident has not affected surrounding buildings, utilities, or transportation systems
- Operations can shift to an alternate COOP location in the jurisdiction

2. Widespread Emergency Requiring Relocation to Alternate Site (earthquake, localized power outage, toxic chemical spill, wildfire, etc.)

- A District government building sustained damage
- Surrounding area is affected
- COOP alternate sites may or may not be available
- Parts of major infrastructures (power, sewage, transportation, etc.) may have sustained damage
- Operations can shift to an alternate location within the jurisdiction or a neighboring jurisdiction

3. Widespread Emergency NOT Requiring Relocation to Alternate Site (pandemic influenza outbreak)

- A District government building did not sustain damage and remains open
- One or more departments of the city government experiences high levels of employee absenteeism
- COOP operations will be conducted from the primary location

SECTION 5: OPERATION OF THE COOP PLAN

The procedures in this Section were developed based on the following key assumptions:

- Emergencies or threatened emergencies can adversely impact the agency's ability to continue to support essential functions and to provide support to the District's operations and citizens;
- Emergencies and threatened emergencies differ in priority and impact;
- The vulnerability of the agency depends on the probability of an emergency occurring and the impact that the emergency could have on the operations and performance of essential functions;
- Outside assistance may be interrupted or unavailable during an emergency;
- The agency will provide essential functions within 24-48 hours of the emergency and be able to continue these for 30 days or until termination of the emergency, whichever comes first;
- District departments and offices must be prepared to operate without help for at least 72 hours; and
- When the COOP is activated, the agency will implement a predetermined plan using trained and equipped personnel.

5.1 Phase 1- Activation Plan and Procedure

COOP activation for the Commission will commence at the direction of the Executive Director of the agency.

Upon activation of the COOP, the Commission shall:

1. Notify COOP Contingency Staff and the rest of the agency's employees of COOP activation and provide them with basic instructions;
2. Notify the point of contact at the alternate facility/location of impending activation and actual relocation requirements;
3. Notify the appropriate internal and external organizations;
4. Implement plans, procedures, and schedules to transfer essential functions, personnel, data system, records, and equipment to alternate facilities/locations;
5. Provide guidance to agency staff;
6. Assemble necessary documents and equipment required to continue performance of essential operations at alternate facilities/locations, data systems, including communications equipment, computer equipment, contact lists, vendor numbers, and contact numbers; and
7. Transport vital records and files, supporting communications, IT framework and other necessary equipment to the alternate facilities/locations, if applicable.

5.2 Phase 2- Activation Plan and Procedure for Alternative Facility/Location of Operation

1. Provide further safety and security guidance to agency and vendor staff;
2. Identify replacements for missing personnel and request augmentation as necessary;
3. Begin full execution of essential functions at alternate facilities/locations;

4. Immediately notify the Commission Chair of the alternate facility/location activation, operational and communications status, and anticipated duration of relocation, if known;
5. Develop plans and schedules to phase down alternate facility/location operations and return essential functions, personnel, records, and equipment to the primary facility/location or to other temporary or permanent facilities/locations, when appropriate; and
6. Develop a staffing plan and determine responsibilities to implement reconstitution.

5.3 Phase 3- Reconstruction (Termination of COOP Operations and Return to Normal Operations)

1. When notified that the threat or actual emergency no longer exists, inform all staff and provide instructions for resumption of normal operations;
2. Supervise an orderly return to the primary facility/location, or movement to other temporary or permanent facility/location, using a phased approach if conditions necessitate;
3. Inform the point of contact at the alternate facility/location and other points of contact that agency and vendor staff and functions will be leaving the alternative facility/location, if applicable; and
4. Conduct an after action review of COOP operations and effectiveness of plans and procedures as soon as possible; identify areas for correction; develop an improvement plan.

In an event of an emergency, agency employees should follow activation of the Continuity Plan and immediately contact Mindcubed, Inc. staff for application support and OCTO for infrastructure support with regard to accessing the GRID and GSS systems:

Once Mindcubed, Inc. and OCTO are involved, the necessary steps will then be followed:

- A designated SCDC employee will be the point of contact and coordinate all actions by Mindcubed, Inc. and OCTO. This will normally be handled by the Commission's IT Specialist.
- Mindcubed, Inc. will respond via phone and/or e-mail, acknowledging they are aware of the problem and are attempting to resolve it.
- The response timelines are as follows:
 - Critical issues – response time within 1 hour of acknowledgement, resolved within 24-48 hours.
 - Crucial issues – response time
 - Necessary issues – response time
- Mindcubed, Inc. will continue to update staff via phone and/or email daily until the issue is resolved.

SECTION 6: MAINTENANCE AND AUTHORITY

6.1 COOP Maintenance

This plan, including essential functions and supporting activities, shall be reviewed annually, and depending on the changes, will be either updated or rewritten to ensure the COOP contains the most current information. The agency will hold an annual COOP debrief meeting, led by the Executive Director, the 1st Thursday in September, where agency employees will provide any comments or suggestions for updating and improving the COOP Plan. Once the new changes are agreed upon, the Data Manager will have overall responsibility for updating and managing this plan. This review shall be complete no later than September 15th of each year. The Data Manager will make the necessary changes and provide the team with an up to date COOP Plan. The most recent version of the COOP Plan will also be placed in the SCDC agency shared drive in a folder titled “Agency COOP Plan”.

6.2 COOP Test, Training, and Exercise (TT&E) Program

The Commission will create and establish an effective TT&E program to support the agency’s preparedness and validate the continuity capabilities, program and ability to perform essential functions during any emergency. The testing, training and exercising of continuity capabilities are essential to demonstrating, assessing and improving the Commission’s ability to execute the COOP.

- Training familiarizes personnel with their roles and responsibilities in support of the performance of the Commission’s essential functions during an event.
- Tests and exercises serve to assess, validate or identify for subsequent correction, all components of the COOP, policies, procedures, systems and facilities used in response to an event. Periodic testing also ensures that equipment and procedures are kept in a constant state of readiness.

The Commission formally documents and reports all conducted continuity TT&E events, including documenting the date of the TT&E event, the type of event, and names of participants. Continuity TT&E documentation for the Commission is managed by the Data Manager and will be stored on the Agency’s shared drive. Further, the Commission will conduct a comprehensive debriefing after each exercise, which allows participants to identify systemic weaknesses in the plan and procedures and to recommend revisions to organization’s continuity plan.

FY22 Budget

Program Code/Name	Budget	Expenditures
1010-PERSONNEL	124,386.10	120,474.20
1015-TRAINING	43,786.00	38,770.94
1030-PROPERTY MANAGEMENT	6,337.31	6,090.19
1040-INFORMATION TECHNOLOGY	35,501.00	32,579.79
1060-LEGAL SERVICES	10,824.00	10,519.81
2010-ACS OFFENSE AND OFFENDER DATABASE	606,886.47	618,490.82
2020-SENTENCING GUIDELINES MONITORING	391,269.00	391,202.00
2040-POLICY REPORTS AND PROPOSALS	185,984.44	212,068.34
2050-SENTENCING GUIDELINES TRAINING	148,060.00	198,423.95
2060-PREP SENTENCING GUIDELINES MATERIALS	77,297.00	-
Grand Total	1,630,331.32	1,628,620.04

Variance	Comments
3,911.90	Surplus due to new hire at lower salary.
5,015.06	Surplus due to non attendance of conferences and travel.
247.12	
2,921.21	Return of intra-District advance.
304.19	
(11,604.35)	COLA payment.
67.00	
(26,083.90)	Executive dircetor's new salary, fringe benefits and COLA payment.
(50,363.95)	1 FTEs reassigned from other programs and 1 new FTE.
77,297.00	1 FTE reassigned to other program.
1,711.28	Surplus due to COLA reimbursement from Workforce Investment funds.

FY	2022
Fund Detail	0100-LOCAL FUNDS

Program Code	Values	
	Sum of Budget	Sum of Expenditures
1000-MANAGEMENT	-	-
1010-PERSONNEL	124,386.10	120,474.20
1015-TRAINING	43,786.00	38,770.94
1020-CONTRACTING AND PROCUREMENT	-	-
1030-PROPERTY MANAGEMENT	6,337.31	6,090.19
1040-INFORMATION TECHNOLOGY	35,501.00	32,579.79
1060-LEGAL SERVICES	10,824.00	10,519.81
2010-ACS OFFENSE AND OFFENDER DATABASE	606,886.47	618,490.82
2020-SENTENCING GUIDELINES MONITORING	391,269.00	391,202.00
2040-POLICY REPORTS AND PROPOSALS	185,984.44	212,068.34
2050-SENTENCING GUIDELINES TRAINING	148,060.00	198,423.95
2060-PREP SENTENCING GUIDELINES MATERIALS	77,297.00	-
9960-YR END CLOSE	-	-
Grand Total	1,630,331.32	1,628,620.04

FY	Fund Detail	CSG
2022	0100-LOCAL FUNDS	0041-CONTRACTUAL SERVICES - OTHER
2022	0100-LOCAL FUNDS	0014-FRINGE BENEFITS - CURR PERSONNEL
2022	0100-LOCAL FUNDS	0014-FRINGE BENEFITS - CURR PERSONNEL
2022	0100-LOCAL FUNDS	0020-SUPPLIES AND MATERIALS
2022	0100-LOCAL FUNDS	0020-SUPPLIES AND MATERIALS
2022	0100-LOCAL FUNDS	0035-OCCUPANCY FIXED COSTS
2022	0100-LOCAL FUNDS	0030-ENERGY, COMM. AND BLDG RENTALS
2022	0100-LOCAL FUNDS	0030-ENERGY, COMM. AND BLDG RENTALS
2022	0100-LOCAL FUNDS	0031-TELECOMMUNICATIONS
2022	0100-LOCAL FUNDS	0040-OTHER SERVICES AND CHARGES
2022	0100-LOCAL FUNDS	0013-ADDITIONAL GROSS PAY
2022	0100-LOCAL FUNDS	0014-FRINGE BENEFITS - CURR PERSONNEL
2022	0100-LOCAL FUNDS	0014-FRINGE BENEFITS - CURR PERSONNEL
2022	0100-LOCAL FUNDS	0014-FRINGE BENEFITS - CURR PERSONNEL
2022	0100-LOCAL FUNDS	0015-OVERTIME PAY
2022	0100-LOCAL FUNDS	0035-OCCUPANCY FIXED COSTS
2022	0100-LOCAL FUNDS	0040-OTHER SERVICES AND CHARGES
2022	0100-LOCAL FUNDS	0040-OTHER SERVICES AND CHARGES
2022	0100-LOCAL FUNDS	0040-OTHER SERVICES AND CHARGES
2022	0100-LOCAL FUNDS	0040-OTHER SERVICES AND CHARGES
2022	0100-LOCAL FUNDS	0040-OTHER SERVICES AND CHARGES
2022	0100-LOCAL FUNDS	0040-OTHER SERVICES AND CHARGES
2022	0100-LOCAL FUNDS	0040-OTHER SERVICES AND CHARGES
2022	0100-LOCAL FUNDS	0040-OTHER SERVICES AND CHARGES
2022	0100-LOCAL FUNDS	0014-FRINGE BENEFITS - CURR PERSONNEL
2022	0100-LOCAL FUNDS	0011-REGULAR PAY - CONT FULL TIME
2022	0100-LOCAL FUNDS	0011-REGULAR PAY - CONT FULL TIME
2022	0100-LOCAL FUNDS	0040-OTHER SERVICES AND CHARGES
2022	0100-LOCAL FUNDS	0040-OTHER SERVICES AND CHARGES
2022	0100-LOCAL FUNDS	0040-OTHER SERVICES AND CHARGES
2022	0100-LOCAL FUNDS	0040-OTHER SERVICES AND CHARGES
2022	0100-LOCAL FUNDS	0040-OTHER SERVICES AND CHARGES
2022	0100-LOCAL FUNDS	0041-CONTRACTUAL SERVICES - OTHER
2022	0100-LOCAL FUNDS	0070-EQUIPMENT & EQUIPMENT RENTAL
2022	0100-LOCAL FUNDS	0040-OTHER SERVICES AND CHARGES
2022	0100-LOCAL FUNDS	0014-FRINGE BENEFITS - CURR PERSONNEL
2022	0100-LOCAL FUNDS	0014-FRINGE BENEFITS - CURR PERSONNEL
2022	0100-LOCAL FUNDS	0014-FRINGE BENEFITS - CURR PERSONNEL
2022	0100-LOCAL FUNDS	0014-FRINGE BENEFITS - CURR PERSONNEL
2022	0100-LOCAL FUNDS	0014-FRINGE BENEFITS - CURR PERSONNEL
2022	0100-LOCAL FUNDS	0011-REGULAR PAY - CONT FULL TIME
2022	0100-LOCAL FUNDS	0020-SUPPLIES AND MATERIALS
2022	0100-LOCAL FUNDS	0040-OTHER SERVICES AND CHARGES
2022	0100-LOCAL FUNDS	0040-OTHER SERVICES AND CHARGES
2022	0100-LOCAL FUNDS	0040-OTHER SERVICES AND CHARGES
2022	0100-LOCAL FUNDS	0070-EQUIPMENT & EQUIPMENT RENTAL

2022	0100-LOCAL FUNDS	0013-ADDITIONAL GROSS PAY
2022	0100-LOCAL FUNDS	0014-FRINGE BENEFITS - CURR PERSONNEL
2022	0100-LOCAL FUNDS	0014-FRINGE BENEFITS - CURR PERSONNEL
2022	0100-LOCAL FUNDS	0014-FRINGE BENEFITS - CURR PERSONNEL
2022	0100-LOCAL FUNDS	0014-FRINGE BENEFITS - CURR PERSONNEL
2022	0100-LOCAL FUNDS	0014-FRINGE BENEFITS - CURR PERSONNEL
2022	0100-LOCAL FUNDS	0014-FRINGE BENEFITS - CURR PERSONNEL
2022	0100-LOCAL FUNDS	0040-OTHER SERVICES AND CHARGES
2022	0100-LOCAL FUNDS	0040-OTHER SERVICES AND CHARGES
2022	0100-LOCAL FUNDS	0070-EQUIPMENT & EQUIPMENT RENTAL
2022	0100-LOCAL FUNDS	0013-ADDITIONAL GROSS PAY
2022	0100-LOCAL FUNDS	0014-FRINGE BENEFITS - CURR PERSONNEL
2022	0100-LOCAL FUNDS	0014-FRINGE BENEFITS - CURR PERSONNEL
2022	0100-LOCAL FUNDS	0014-FRINGE BENEFITS - CURR PERSONNEL
2022	0100-LOCAL FUNDS	0014-FRINGE BENEFITS - CURR PERSONNEL
2022	0100-LOCAL FUNDS	0014-FRINGE BENEFITS - CURR PERSONNEL
2022	0100-LOCAL FUNDS	0020-SUPPLIES AND MATERIALS
2022	0100-LOCAL FUNDS	0033-JANITORIAL SERVICES
2022	0100-LOCAL FUNDS	0031-TELEPHONE, TELEGRAPH, TELEGRAM, ETC
2022	0100-LOCAL FUNDS	0040-OTHER SERVICES AND CHARGES
2022	0100-LOCAL FUNDS	0040-OTHER SERVICES AND CHARGES
2022	0100-LOCAL FUNDS	0040-OTHER SERVICES AND CHARGES
2022	0100-LOCAL FUNDS	0041-CONTRACTUAL SERVICES - OTHER
2022	0100-LOCAL FUNDS	0070-EQUIPMENT & EQUIPMENT RENTAL
2022	0100-LOCAL FUNDS	0013-ADDITIONAL GROSS PAY
2022	0100-LOCAL FUNDS	0014-FRINGE BENEFITS - CURR PERSONNEL
2022	0100-LOCAL FUNDS	0014-FRINGE BENEFITS - CURR PERSONNEL
2022	0100-LOCAL FUNDS	0014-FRINGE BENEFITS - CURR PERSONNEL
2022	0100-LOCAL FUNDS	0014-FRINGE BENEFITS - CURR PERSONNEL
2022	0100-LOCAL FUNDS	0014-FRINGE BENEFITS - CURR PERSONNEL
2022	0100-LOCAL FUNDS	0014-FRINGE BENEFITS - CURR PERSONNEL
2022	0100-LOCAL FUNDS	0014-FRINGE BENEFITS - CURR PERSONNEL
2022	0100-LOCAL FUNDS	0014-FRINGE BENEFITS - CURR PERSONNEL
2022	0100-LOCAL FUNDS	0014-FRINGE BENEFITS - CURR PERSONNEL
2022	0100-LOCAL FUNDS	0014-FRINGE BENEFITS - CURR PERSONNEL
2022	0100-LOCAL FUNDS	0014-FRINGE BENEFITS - CURR PERSONNEL
2022	0100-LOCAL FUNDS	0011-REGULAR PAY - CONT FULL TIME
2022	0100-LOCAL FUNDS	0020-SUPPLIES AND MATERIALS
2022	0100-LOCAL FUNDS	0040-OTHER SERVICES AND CHARGES
2022	0100-LOCAL FUNDS	0041-CONTRACTUAL SERVICES - OTHER
2022	0100-LOCAL FUNDS	0013-ADDITIONAL GROSS PAY
2022	0100-LOCAL FUNDS	0014-FRINGE BENEFITS - CURR PERSONNEL
2022	0100-LOCAL FUNDS	0014-FRINGE BENEFITS - CURR PERSONNEL
2022	0100-LOCAL FUNDS	0014-FRINGE BENEFITS - CURR PERSONNEL
2022	0100-LOCAL FUNDS	0014-FRINGE BENEFITS - CURR PERSONNEL
2022	0100-LOCAL FUNDS	0014-FRINGE BENEFITS - CURR PERSONNEL
2022	0100-LOCAL FUNDS	0011-REGULAR PAY - CONT FULL TIME

2022	0100-LOCAL FUNDS	0033-JANITORIAL SERVICES
2022	0100-LOCAL FUNDS	0030-ENERGY, COMM. AND BLDG RENTALS
2022	0100-LOCAL FUNDS	0034-SECURITY SERVICES
2022	0100-LOCAL FUNDS	0040-OTHER SERVICES AND CHARGES
2022	0100-LOCAL FUNDS	0040-OTHER SERVICES AND CHARGES
2022	0100-LOCAL FUNDS	0040-OTHER SERVICES AND CHARGES
2022	0100-LOCAL FUNDS	0040-OTHER SERVICES AND CHARGES

Comp Object	Org Code
0409-CONTRACTUAL SERVICES - OTHER	2000-ACS ADMINISTRATIVE PROGRAMS DETAIL
0155-DENTAL PLAN	1000-ADVISORY COMMISSION ON SENTENCING
0154-OPTICAL PLAN	2000-ACS ADMINISTRATIVE PROGRAMS DETAIL
0201-OFFICE SUPPLIES	1000-ADVISORY COMMISSION ON SENTENCING
0201-OFFICE SUPPLIES	1000-ADVISORY COMMISSION ON SENTENCING
0310-OCCUPANCY FIXED COSTS	1000-ADVISORY COMMISSION ON SENTENCING
0307-WATER	1000-ADVISORY COMMISSION ON SENTENCING
0307-WATER	9900-AUDIT ADJUSTMENT
0308-TELECOMMUNICATIONS	1000-ADVISORY COMMISSION ON SENTENCING
0410-OFFICE SUPPORT	1000-ADVISORY COMMISSION ON SENTENCING
0137-SPECIAL AWARDS PAY	1000-ADVISORY COMMISSION ON SENTENCING
0141-GROUP LIFE INSURANCE	1000-ADVISORY COMMISSION ON SENTENCING
0159-RETIREMENT	2000-ACS ADMINISTRATIVE PROGRAMS DETAIL
0161-DC HEALTH BENEFIT FEES	2000-ACS ADMINISTRATIVE PROGRAMS DETAIL
0133-OVERTIME PAY	2000-ACS ADMINISTRATIVE PROGRAMS DETAIL
0310-OCCUPANCY FIXED COSTS	9900-AUDIT ADJUSTMENT
0410-OFFICE SUPPORT	1000-ADVISORY COMMISSION ON SENTENCING
0410-OFFICE SUPPORT	1000-ADVISORY COMMISSION ON SENTENCING
0410-OFFICE SUPPORT	1000-ADVISORY COMMISSION ON SENTENCING
0408-PROF SERVICE FEES AND CONTR	1000-ADVISORY COMMISSION ON SENTENCING
0424-CONFERENCE FEES LOC OUT OF CITY	1000-ADVISORY COMMISSION ON SENTENCING
0408-PROF SERVICE FEES AND CONTR	1000-ADVISORY COMMISSION ON SENTENCING
0408-PROF SERVICE FEES AND CONTR	2000-ACS ADMINISTRATIVE PROGRAMS DETAIL
0141-GROUP LIFE INSURANCE	2000-ACS ADMINISTRATIVE PROGRAMS DETAIL
0111-CONTINUING FULL TIME	1000-ADVISORY COMMISSION ON SENTENCING
0111-CONTINUING FULL TIME	2000-ACS ADMINISTRATIVE PROGRAMS DETAIL
0410-OFFICE SUPPORT	9900-AUDIT ADJUSTMENT
0416-POSTAGE	1000-ADVISORY COMMISSION ON SENTENCING
0405-MAINTENANCE AND REPAIRS - MACH	1000-ADVISORY COMMISSION ON SENTENCING
0410-OFFICE SUPPORT	1000-ADVISORY COMMISSION ON SENTENCING
0408-PROF SERVICE FEES AND CONTR	1000-ADVISORY COMMISSION ON SENTENCING
0409-CONTRACTUAL SERVICES - OTHER	2000-ACS ADMINISTRATIVE PROGRAMS DETAIL
0702-PURCHASES - EQUIPMENT AND MACHINERY	1000-ADVISORY COMMISSION ON SENTENCING
0494-OCTO IT ASSESSMENT	1000-ADVISORY COMMISSION ON SENTENCING
0147-MISC FRINGE BENEFITS	2000-ACS ADMINISTRATIVE PROGRAMS DETAIL
0154-OPTICAL PLAN	2000-ACS ADMINISTRATIVE PROGRAMS DETAIL
0161-DC HEALTH BENEFIT FEES	2000-ACS ADMINISTRATIVE PROGRAMS DETAIL
0142-HEALTH BENEFITS	2000-ACS ADMINISTRATIVE PROGRAMS DETAIL
0148-RETIREMENT CONTRIBUTION - FICA	2000-ACS ADMINISTRATIVE PROGRAMS DETAIL
0111-CONTINUING FULL TIME	2000-ACS ADMINISTRATIVE PROGRAMS DETAIL
0201-OFFICE SUPPLIES	9900-AUDIT ADJUSTMENT
0493-PROCUREMENT ASSESSMENT	1000-ADVISORY COMMISSION ON SENTENCING
0419-TUITION FOR EMPLOYEE TRAINING	1000-ADVISORY COMMISSION ON SENTENCING
0402-TRAVEL - OUT OF CITY	1000-ADVISORY COMMISSION ON SENTENCING
0702-PURCHASES - EQUIPMENT AND MACHINERY	1000-ADVISORY COMMISSION ON SENTENCING

0137-SPECIAL AWARDS PAY	2000-ACS ADMINISTRATIVE PROGRAMS DETAIL
0148-RETIREMENT CONTRIBUTION - FICA	1000-ADVISORY COMMISSION ON SENTENCING
0141-GROUP LIFE INSURANCE	2000-ACS ADMINISTRATIVE PROGRAMS DETAIL
0142-HEALTH BENEFITS	2000-ACS ADMINISTRATIVE PROGRAMS DETAIL
0154-OPTICAL PLAN	2000-ACS ADMINISTRATIVE PROGRAMS DETAIL
0158-MEDICARE CONTRIBUTION	2000-ACS ADMINISTRATIVE PROGRAMS DETAIL
0158-MEDICARE CONTRIBUTION	2000-ACS ADMINISTRATIVE PROGRAMS DETAIL
0402-TRAVEL - OUT OF CITY	1000-ADVISORY COMMISSION ON SENTENCING
0408-PROF SERVICE FEES AND CONTR	1000-ADVISORY COMMISSION ON SENTENCING
0702-PURCHASES - EQUIPMENT AND MACHINERY	1000-ADVISORY COMMISSION ON SENTENCING
0134-TERMINAL LEAVE	2000-ACS ADMINISTRATIVE PROGRAMS DETAIL
0161-DC HEALTH BENEFIT FEES	1000-ADVISORY COMMISSION ON SENTENCING
0147-MISC FRINGE BENEFITS	2000-ACS ADMINISTRATIVE PROGRAMS DETAIL
0155-DENTAL PLAN	2000-ACS ADMINISTRATIVE PROGRAMS DETAIL
0158-MEDICARE CONTRIBUTION	2000-ACS ADMINISTRATIVE PROGRAMS DETAIL
0141-GROUP LIFE INSURANCE	2000-ACS ADMINISTRATIVE PROGRAMS DETAIL
0201-OFFICE SUPPLIES	1000-ADVISORY COMMISSION ON SENTENCING
0430-JANITORIAL SERVICES	1000-ADVISORY COMMISSION ON SENTENCING
0308-TELEPHONE, TELETYPE, TELEGRAM, ETC	1000-ADVISORY COMMISSION ON SENTENCING
0401-TRAVEL - LOCAL	1000-ADVISORY COMMISSION ON SENTENCING
0416-POSTAGE	1000-ADVISORY COMMISSION ON SENTENCING
0402-TRAVEL - OUT OF CITY	1000-ADVISORY COMMISSION ON SENTENCING
0409-CONTRACTUAL SERVICES - OTHER	1000-ADVISORY COMMISSION ON SENTENCING
0702-PURCHASES - EQUIPMENT AND MACHINERY	1000-ADVISORY COMMISSION ON SENTENCING
0137-SPECIAL AWARDS PAY	2000-ACS ADMINISTRATIVE PROGRAMS DETAIL
0147-MISC FRINGE BENEFITS	1000-ADVISORY COMMISSION ON SENTENCING
0154-OPTICAL PLAN	1000-ADVISORY COMMISSION ON SENTENCING
0158-MEDICARE CONTRIBUTION	1000-ADVISORY COMMISSION ON SENTENCING
0159-RETIREMENT	1000-ADVISORY COMMISSION ON SENTENCING
0161-DC HEALTH BENEFIT FEES	2000-ACS ADMINISTRATIVE PROGRAMS DETAIL
0155-DENTAL PLAN	2000-ACS ADMINISTRATIVE PROGRAMS DETAIL
0159-RETIREMENT	2000-ACS ADMINISTRATIVE PROGRAMS DETAIL
0147-MISC FRINGE BENEFITS	2000-ACS ADMINISTRATIVE PROGRAMS DETAIL
0155-DENTAL PLAN	2000-ACS ADMINISTRATIVE PROGRAMS DETAIL
0147-MISC FRINGE BENEFITS	2000-ACS ADMINISTRATIVE PROGRAMS DETAIL
0111-CONTINUING FULL TIME	2000-ACS ADMINISTRATIVE PROGRAMS DETAIL
0201-OFFICE SUPPLIES	1000-ADVISORY COMMISSION ON SENTENCING
0424-CONFERENCE FEES LOC OUT OF CITY	1000-ADVISORY COMMISSION ON SENTENCING
0409-CONTRACTUAL SERVICES - OTHER	2000-ACS ADMINISTRATIVE PROGRAMS DETAIL
0134-TERMINAL LEAVE	2000-ACS ADMINISTRATIVE PROGRAMS DETAIL
0142-HEALTH BENEFITS	1000-ADVISORY COMMISSION ON SENTENCING
0148-RETIREMENT CONTRIBUTION - FICA	2000-ACS ADMINISTRATIVE PROGRAMS DETAIL
0142-HEALTH BENEFITS	2000-ACS ADMINISTRATIVE PROGRAMS DETAIL
0148-RETIREMENT CONTRIBUTION - FICA	2000-ACS ADMINISTRATIVE PROGRAMS DETAIL
0159-RETIREMENT	2000-ACS ADMINISTRATIVE PROGRAMS DETAIL
0111-CONTINUING FULL TIME	2000-ACS ADMINISTRATIVE PROGRAMS DETAIL

0430-JANITORIAL SERVICES	1000-ADVISORY COMMISSION ON SENTENCING
0305-ELECTRICITY	1000-ADVISORY COMMISSION ON SENTENCING
0440-SECURITY SERVICES	1000-ADVISORY COMMISSION ON SENTENCING
0410-OFFICE SUPPORT	1000-ADVISORY COMMISSION ON SENTENCING
0411-PRINTING, DUPLICATING, ETC	1000-ADVISORY COMMISSION ON SENTENCING
0411-PRINTING, DUPLICATING, ETC	1000-ADVISORY COMMISSION ON SENTENCING
0416-POSTAGE	1000-ADVISORY COMMISSION ON SENTENCING

Program Code
2020-SENTENCING GUIDELINES MONITORING
1010-PERSONNEL
2050-SENTENCING GUIDELINES TRAINING
2020-SENTENCING GUIDELINES MONITORING
1060-LEGAL SERVICES
1030-PROPERTY MANAGEMENT
1030-PROPERTY MANAGEMENT
9960-YR END CLOSE
1030-PROPERTY MANAGEMENT
1000-MANAGEMENT
1010-PERSONNEL
1010-PERSONNEL
2010-ACS OFFENSE AND OFFENDER DATABASE
2050-SENTENCING GUIDELINES TRAINING
2010-ACS OFFENSE AND OFFENDER DATABASE
9960-YR END CLOSE
1015-TRAINING
1010-PERSONNEL
1040-INFORMATION TECHNOLOGY
1015-TRAINING
1015-TRAINING
1060-LEGAL SERVICES
2010-ACS OFFENSE AND OFFENDER DATABASE
2040-POLICY REPORTS AND PROPOSALS
1010-PERSONNEL
2040-POLICY REPORTS AND PROPOSALS
9960-YR END CLOSE
1020-CONTRACTING AND PROCUREMENT
2040-POLICY REPORTS AND PROPOSALS
2050-SENTENCING GUIDELINES TRAINING
1010-PERSONNEL
2020-SENTENCING GUIDELINES MONITORING
1010-PERSONNEL
1040-INFORMATION TECHNOLOGY
2040-POLICY REPORTS AND PROPOSALS
2040-POLICY REPORTS AND PROPOSALS
2040-POLICY REPORTS AND PROPOSALS
2050-SENTENCING GUIDELINES TRAINING
2050-SENTENCING GUIDELINES TRAINING
2010-ACS OFFENSE AND OFFENDER DATABASE
9960-YR END CLOSE
1020-CONTRACTING AND PROCUREMENT
1015-TRAINING
1060-LEGAL SERVICES
1015-TRAINING

2050-SENTENCING GUIDELINES TRAINING
1010-PERSONNEL
2010-ACS OFFENSE AND OFFENDER DATABASE
2010-ACS OFFENSE AND OFFENDER DATABASE
2010-ACS OFFENSE AND OFFENDER DATABASE
2040-POLICY REPORTS AND PROPOSALS
2050-SENTENCING GUIDELINES TRAINING
1015-TRAINING
1040-INFORMATION TECHNOLOGY
1000-MANAGEMENT
2040-POLICY REPORTS AND PROPOSALS
1010-PERSONNEL
2010-ACS OFFENSE AND OFFENDER DATABASE
2010-ACS OFFENSE AND OFFENDER DATABASE
2010-ACS OFFENSE AND OFFENDER DATABASE
2050-SENTENCING GUIDELINES TRAINING
1010-PERSONNEL
1000-MANAGEMENT
1030-PROPERTY MANAGEMENT
1015-TRAINING
2040-POLICY REPORTS AND PROPOSALS
1010-PERSONNEL
1030-PROPERTY MANAGEMENT
1040-INFORMATION TECHNOLOGY
2010-ACS OFFENSE AND OFFENDER DATABASE
1010-PERSONNEL
1010-PERSONNEL
1010-PERSONNEL
1010-PERSONNEL
2010-ACS OFFENSE AND OFFENDER DATABASE
2040-POLICY REPORTS AND PROPOSALS
2040-POLICY REPORTS AND PROPOSALS
2050-SENTENCING GUIDELINES TRAINING
2050-SENTENCING GUIDELINES TRAINING
2060-PREP SENTENCING GUIDELINES MATERIALS
2050-SENTENCING GUIDELINES TRAINING
1000-MANAGEMENT
1060-LEGAL SERVICES
2010-ACS OFFENSE AND OFFENDER DATABASE
2010-ACS OFFENSE AND OFFENDER DATABASE
1010-PERSONNEL
2010-ACS OFFENSE AND OFFENDER DATABASE
2040-POLICY REPORTS AND PROPOSALS
2040-POLICY REPORTS AND PROPOSALS
2050-SENTENCING GUIDELINES TRAINING
2060-PREP SENTENCING GUIDELINES MATERIALS

1030-PROPERTY MANAGEMENT
1030-PROPERTY MANAGEMENT
1030-PROPERTY MANAGEMENT
1030-PROPERTY MANAGEMENT
1040-INFORMATION TECHNOLOGY
1010-PERSONNEL
1030-PROPERTY MANAGEMENT

Index	PCA	Project
10002-SENTENCING COMMISSION	20200-SENTENCING GUIDELINES MONITORING	-
10000-ADVISORY COMMISSION ON SENTENCING	10100-PERSONNEL	-
20000-ADVISORY COMMISSION ON SENTENCING	20500-SENTENCING GUIDELINES TRAINING	-
10000-ADVISORY COMMISSION ON SENTENCING	20200-SENTENCING GUIDELINES MONITORING	-
10000-ADVISORY COMMISSION ON SENTENCING	10600-LEGAL SERVICES	-
10000-ADVISORY COMMISSION ON SENTENCING	10300-PROPERTY MANAGEMENT	-
10000-ADVISORY COMMISSION ON SENTENCING	10300-PROPERTY MANAGEMENT	-
AUDIT-YEAR END AUDIT ADJUSTMENT	AUDIT-AUDIT ADJUSTMENT	-
10000-ADVISORY COMMISSION ON SENTENCING	10300-PROPERTY MANAGEMENT	-
10000-ADVISORY COMMISSION ON SENTENCING	10000-MANAGEMENT	-
10000-ADVISORY COMMISSION ON SENTENCING	10100-PERSONNEL	-
10000-ADVISORY COMMISSION ON SENTENCING	10100-PERSONNEL	-
20000-ADVISORY COMMISSION ON SENTENCING	20100-ACS OFFENSE AND OFFENDER DATABASE	-
20000-ADVISORY COMMISSION ON SENTENCING	20500-SENTENCING GUIDELINES TRAINING	-
20000-ADVISORY COMMISSION ON SENTENCING	20100-ACS OFFENSE AND OFFENDER DATABASE	-
AUDIT-YEAR END AUDIT ADJUSTMENT	AUDIT-AUDIT ADJUSTMENT	-
10000-ADVISORY COMMISSION ON SENTENCING	10150-TRAINING AND EMPLOYEE DEVELOPMENT	-
10000-ADVISORY COMMISSION ON SENTENCING	10100-PERSONNEL	-
10000-ADVISORY COMMISSION ON SENTENCING	10400-INFORMATION TECHNOLOGY	-
10000-ADVISORY COMMISSION ON SENTENCING	10150-TRAINING AND EMPLOYEE DEVELOPMENT	-
10000-ADVISORY COMMISSION ON SENTENCING	10150-TRAINING AND EMPLOYEE DEVELOPMENT	-
10000-ADVISORY COMMISSION ON SENTENCING	10600-LEGAL SERVICES	-
20000-ADVISORY COMMISSION ON SENTENCING	20100-ACS OFFENSE AND OFFENDER DATABASE	-
20000-ADVISORY COMMISSION ON SENTENCING	20400-POLICY REPORTS AND PROPOSALS	-
10000-ADVISORY COMMISSION ON SENTENCING	10100-PERSONNEL	-
20000-ADVISORY COMMISSION ON SENTENCING	20400-POLICY REPORTS AND PROPOSALS	-
AUDIT-YEAR END AUDIT ADJUSTMENT	AUDIT-AUDIT ADJUSTMENT	-
10000-ADVISORY COMMISSION ON SENTENCING	10200-CONTRACTING AND PROCUREMENT	-
10000-ADVISORY COMMISSION ON SENTENCING	20400-POLICY REPORTS AND PROPOSALS	-
10000-ADVISORY COMMISSION ON SENTENCING	20500-SENTENCING GUIDELINES TRAINING	-
10000-ADVISORY COMMISSION ON SENTENCING	10100-PERSONNEL	-
20000-ADVISORY COMMISSION ON SENTENCING	20200-SENTENCING GUIDELINES MONITORING	-
10000-ADVISORY COMMISSION ON SENTENCING	10100-PERSONNEL	-
10000-ADVISORY COMMISSION ON SENTENCING	10400-INFORMATION TECHNOLOGY	-
20000-ADVISORY COMMISSION ON SENTENCING	20400-POLICY REPORTS AND PROPOSALS	-
20000-ADVISORY COMMISSION ON SENTENCING	20400-POLICY REPORTS AND PROPOSALS	-
20000-ADVISORY COMMISSION ON SENTENCING	20400-POLICY REPORTS AND PROPOSALS	-
20000-ADVISORY COMMISSION ON SENTENCING	20400-POLICY REPORTS AND PROPOSALS	-
20000-ADVISORY COMMISSION ON SENTENCING	20500-SENTENCING GUIDELINES TRAINING	-
20000-ADVISORY COMMISSION ON SENTENCING	20500-SENTENCING GUIDELINES TRAINING	-
20000-ADVISORY COMMISSION ON SENTENCING	20100-ACS OFFENSE AND OFFENDER DATABASE	-
AUDIT-YEAR END AUDIT ADJUSTMENT	AUDIT-AUDIT ADJUSTMENT	-
10000-ADVISORY COMMISSION ON SENTENCING	10200-CONTRACTING AND PROCUREMENT	-
10000-ADVISORY COMMISSION ON SENTENCING	10150-TRAINING AND EMPLOYEE DEVELOPMENT	-
10000-ADVISORY COMMISSION ON SENTENCING	10600-LEGAL SERVICES	-
10000-ADVISORY COMMISSION ON SENTENCING	10150-TRAINING AND EMPLOYEE DEVELOPMENT	-

20000-ADVISORY COMMISSION ON SENTENCING	20500-SENTENCING GUIDELINES TRAINING	-
10000-ADVISORY COMMISSION ON SENTENCING	10100-PERSONNEL	-
20000-ADVISORY COMMISSION ON SENTENCING	20100-ACS OFFENSE AND OFFENDER DATABASE	-
20000-ADVISORY COMMISSION ON SENTENCING	20100-ACS OFFENSE AND OFFENDER DATABASE	-
20000-ADVISORY COMMISSION ON SENTENCING	20100-ACS OFFENSE AND OFFENDER DATABASE	-
20000-ADVISORY COMMISSION ON SENTENCING	20400-POLICY REPORTS AND PROPOSALS	-
20000-ADVISORY COMMISSION ON SENTENCING	20500-SENTENCING GUIDELINES TRAINING	-
10000-ADVISORY COMMISSION ON SENTENCING	10150-TRAINING AND EMPLOYEE DEVELOPMENT	-
10000-ADVISORY COMMISSION ON SENTENCING	10400-INFORMATION TECHNOLOGY	-
10000-ADVISORY COMMISSION ON SENTENCING	10000-MANAGEMENT	-
20000-ADVISORY COMMISSION ON SENTENCING	20400-POLICY REPORTS AND PROPOSALS	-
10000-ADVISORY COMMISSION ON SENTENCING	10100-PERSONNEL	-
20000-ADVISORY COMMISSION ON SENTENCING	20100-ACS OFFENSE AND OFFENDER DATABASE	-
20000-ADVISORY COMMISSION ON SENTENCING	20100-ACS OFFENSE AND OFFENDER DATABASE	-
20000-ADVISORY COMMISSION ON SENTENCING	20100-ACS OFFENSE AND OFFENDER DATABASE	-
20000-ADVISORY COMMISSION ON SENTENCING	20500-SENTENCING GUIDELINES TRAINING	-
10000-ADVISORY COMMISSION ON SENTENCING	10100-PERSONNEL	-
10000-ADVISORY COMMISSION ON SENTENCING	10000-MANAGEMENT	-
10000-ADVISORY COMMISSION ON SENTENCING	10300-PROPERTY MANAGEMENT	-
10000-ADVISORY COMMISSION ON SENTENCING	10150-TRAINING AND EMPLOYEE DEVELOPMENT	-
10000-ADVISORY COMMISSION ON SENTENCING	20400-POLICY REPORTS AND PROPOSALS	-
10000-ADVISORY COMMISSION ON SENTENCING	10100-PERSONNEL	-
10000-ADVISORY COMMISSION ON SENTENCING	10300-PROPERTY MANAGEMENT	-
10000-ADVISORY COMMISSION ON SENTENCING	10400-INFORMATION TECHNOLOGY	-
20000-ADVISORY COMMISSION ON SENTENCING	20100-ACS OFFENSE AND OFFENDER DATABASE	-
10000-ADVISORY COMMISSION ON SENTENCING	10100-PERSONNEL	-
10000-ADVISORY COMMISSION ON SENTENCING	10100-PERSONNEL	-
10000-ADVISORY COMMISSION ON SENTENCING	10100-PERSONNEL	-
10000-ADVISORY COMMISSION ON SENTENCING	10100-PERSONNEL	-
20000-ADVISORY COMMISSION ON SENTENCING	20100-ACS OFFENSE AND OFFENDER DATABASE	-
20000-ADVISORY COMMISSION ON SENTENCING	20400-POLICY REPORTS AND PROPOSALS	-
20000-ADVISORY COMMISSION ON SENTENCING	20400-POLICY REPORTS AND PROPOSALS	-
20000-ADVISORY COMMISSION ON SENTENCING	20500-SENTENCING GUIDELINES TRAINING	-
20000-ADVISORY COMMISSION ON SENTENCING	20500-SENTENCING GUIDELINES TRAINING	-
20000-ADVISORY COMMISSION ON SENTENCING	20600-PREP SENTENCING GUIDELINES MATERIALS	-
20000-ADVISORY COMMISSION ON SENTENCING	20500-SENTENCING GUIDELINES TRAINING	-
10000-ADVISORY COMMISSION ON SENTENCING	10000-MANAGEMENT	-
10000-ADVISORY COMMISSION ON SENTENCING	10600-LEGAL SERVICES	-
20000-ADVISORY COMMISSION ON SENTENCING	20100-ACS OFFENSE AND OFFENDER DATABASE	-
20000-ADVISORY COMMISSION ON SENTENCING	20100-ACS OFFENSE AND OFFENDER DATABASE	-
10000-ADVISORY COMMISSION ON SENTENCING	10100-PERSONNEL	-
20000-ADVISORY COMMISSION ON SENTENCING	20100-ACS OFFENSE AND OFFENDER DATABASE	-
20000-ADVISORY COMMISSION ON SENTENCING	20400-POLICY REPORTS AND PROPOSALS	-
20000-ADVISORY COMMISSION ON SENTENCING	20400-POLICY REPORTS AND PROPOSALS	-
20000-ADVISORY COMMISSION ON SENTENCING	20500-SENTENCING GUIDELINES TRAINING	-
20000-ADVISORY COMMISSION ON SENTENCING	20600-PREP SENTENCING GUIDELINES MATERIALS	-

10000-ADVISORY COMMISSION ON SENTENCING	10300-PROPERTY MANAGEMENT	-
10000-ADVISORY COMMISSION ON SENTENCING	10300-PROPERTY MANAGEMENT	-
10000-ADVISORY COMMISSION ON SENTENCING	10300-PROPERTY MANAGEMENT	-
10000-ADVISORY COMMISSION ON SENTENCING	10300-PROPERTY MANAGEMENT	-
10000-ADVISORY COMMISSION ON SENTENCING	10400-INFORMATION TECHNOLOGY	-
10000-ADVISORY COMMISSION ON SENTENCING	10100-PERSONNEL	-
10000-ADVISORY COMMISSION ON SENTENCING	10300-PROPERTY MANAGEMENT	-

Budget	Expenditures	Obligations	ID Expenditures	Available
0.00	0.00	0.00	0.00	0.00
0.00	173.12	0.00	0.00	-173.12
0.00	107.10	0.00	0.00	-107.10
0.00	0.00	0.00	3500.00	-3500.00
0.00	0.00	0.00	2000.00	-2000.00
0.00	0.00	0.00	-2860.00	2860.00
0.00	0.00	0.00	0.00	0.00
0.00	0.00	0.00	-2860.00	2860.00
0.31	0.00	0.00	0.00	0.31
0.00	0.00	0.00	-21930.00	21930.00
0.00	2384.79	0.00	0.00	-2384.79
0.00	39.74	0.00	0.00	-39.74
0.00	9590.49	0.00	0.00	-9590.49
0.00	344.87	0.00	0.00	-344.87
0.00	437.56	0.00	0.00	-437.56
0.00	0.00	0.00	2860.00	-2860.00
0.00	-1093.20	0.00	25.00	1068.20
23329.29	21892.28	0.00	-20037.00	21474.01
0.00	0.00	0.00	6000.00	-6000.00
0.00	6925.49	0.00	0.00	-6925.49
5500.00	0.00	0.00	0.00	5500.00
3360.00	1763.29	0.00	0.00	1596.71
1100.00	1093.20	0.00	0.00	6.80
0.00	78.44	0.00	0.00	-78.44
67787.53	69744.93	0.00	0.00	-1957.40
150516.44	138854.55	0.00	0.00	11661.89
0.00	0.00	0.00	16037.00	-16037.00
0.00	0.00	0.00	160.00	-160.00
0.00	0.00	0.00	1200.00	-1200.00
0.00	0.00	0.00	645.00	-645.00
6746.00	0.00	0.00	0.00	6746.00
391269.00	391202.00	0.00	0.00	67.00
5500.00	4171.86	0.00	0.00	1328.14
35501.00	32579.79	0.00	0.00	2921.21
35468.00	20000.00	0.00	0.00	15468.00
0.00	81.88	0.00	0.00	-81.88
0.00	17.13	0.00	0.00	-17.13
0.00	12128.20	0.00	0.00	-12128.20
0.00	11449.40	0.00	0.00	-11449.40
247290.14	237165.60	0.00	0.00	10124.54
0.00	0.00	0.00	-16037.00	16037.00
0.00	0.00	0.00	0.00	0.00
0.00	0.00	0.00	2500.00	-2500.00
0.00	1847.51	0.00	0.00	-1847.51
38286.00	32938.65	0.00	0.00	5347.35

0.00	2608.96	0.00	0.00	-2608.96
0.00	4248.05	0.00	0.00	-4248.05
0.00	132.05	0.00	0.00	-132.05
0.00	25790.99	0.00	0.00	-25790.99
0.00	175.62	0.00	0.00	-175.62
0.00	2878.66	0.00	0.00	-2878.66
0.00	2677.68	0.00	0.00	-2677.68
0.00	0.00	0.00	700.00	-700.00
0.00	0.00	0.00	3500.00	-3500.00
0.00	0.00	0.00	-1247.00	1247.00
0.00	39848.67	0.00	0.00	-39848.67
0.00	353.27	0.00	0.00	-353.27
61382.33	0.00	0.00	0.00	61382.33
0.00	519.04	0.00	0.00	-519.04
0.00	3731.07	0.00	0.00	-3731.07
0.00	106.45	0.00	0.00	-106.45
0.00	0.00	0.00	19037.00	-19037.00
0.00	0.00	0.00	-13.00	13.00
0.00	0.00	0.00	0.00	0.00
0.00	0.00	0.00	3600.00	-3600.00
0.00	0.00	0.00	600.00	-600.00
0.00	1284.70	0.00	0.00	-1284.70
5837.00	5837.04	0.00	0.00	-0.04
0.00	0.00	0.00	1247.00	-1247.00
0.00	6565.03	0.00	0.00	-6565.03
14423.28	0.00	0.00	0.00	14423.28
0.00	55.26	0.00	0.00	-55.26
0.00	993.49	0.00	0.00	-993.49
0.00	3487.31	0.00	0.00	-3487.31
0.00	1187.64	0.00	0.00	-1187.64
0.00	154.99	0.00	0.00	-154.99
0.00	187.57	0.00	0.00	-187.57
25560.00	0.00	0.00	0.00	25560.00
0.00	335.32	0.00	0.00	-335.32
8805.00	0.00	0.00	0.00	8805.00
122500.00	167262.34	0.00	0.00	-44762.34
0.00	0.00	0.00	-2000.00	2000.00
7464.00	6909.01	0.00	0.00	554.99
297114.00	292192.48	0.00	0.00	4921.52
0.00	23956.42	0.00	0.00	-23956.42
0.00	7561.14	0.00	0.00	-7561.14
0.00	15953.63	0.00	0.00	-15953.63
0.00	349.46	0.00	0.00	-349.46
0.00	9616.99	0.00	0.00	-9616.99
0.00	1403.63	0.00	0.00	-1403.63
68492.00	0.00	0.00	0.00	68492.00

0.00	0.00	0.00	13.00	-13.00
0.00	0.00	0.00	2860.00	-2860.00
0.00	0.00	0.00	0.00	0.00
0.00	0.00	0.00	-2500.00	2500.00
0.00	0.00	0.00	3000.00	-3000.00
6600.00	4084.26	0.00	0.00	2515.74
500.00	253.15	0.00	0.00	246.85
1,630,331.32	1,628,620.04	0	0	1,711.28