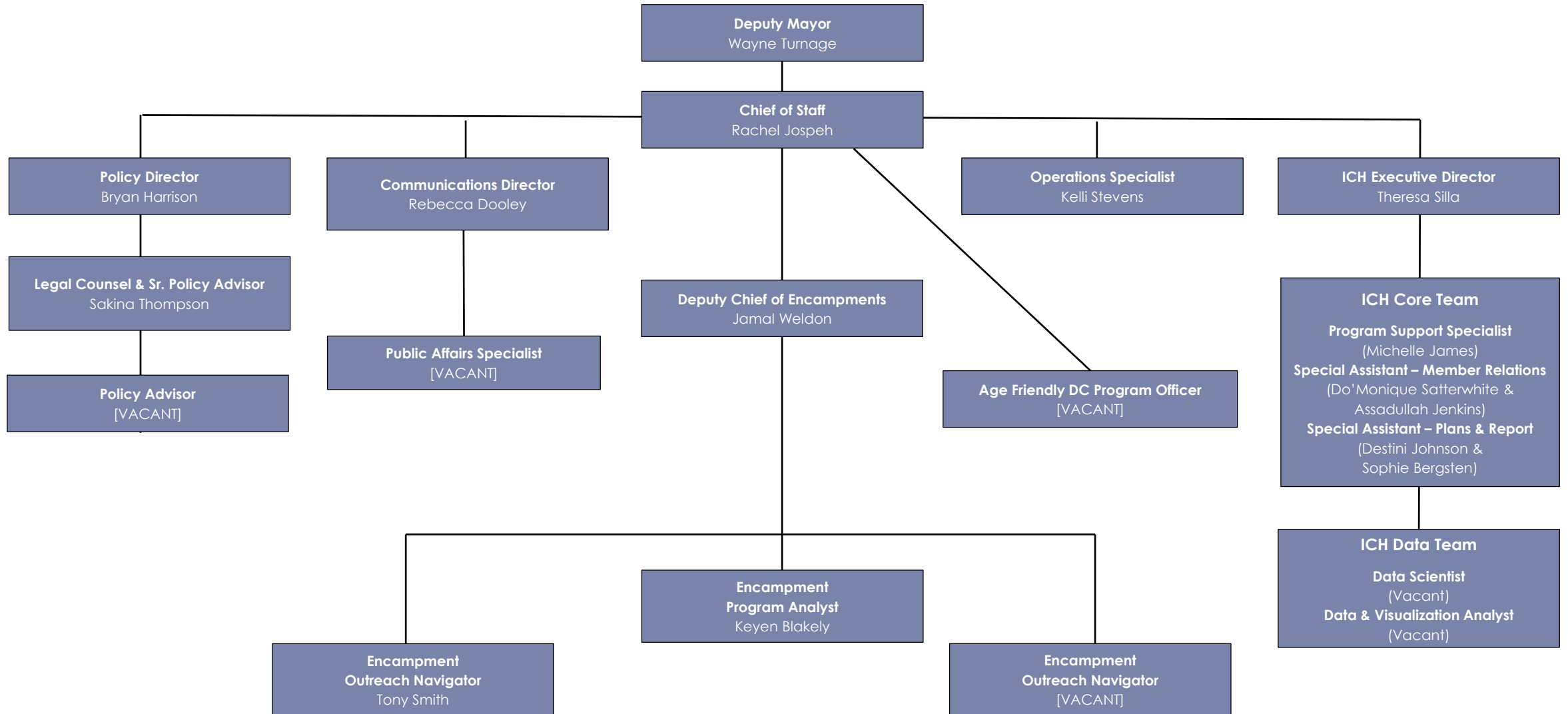


DMHHS ORGANIZATIONAL CHART



Run date/Time: 01-22-2026 01:18:45

[illegible]

[illegible]

R025 YTD Budgetary Control Analysis Report - DC Authority Reporting

Control Budget	DC Authority Reporting
Fiscal Year	2025
Period	ALL
Agency	HG0
Fund	ALL
Account	ALL
Program	ALL
Cost Center	ALL
Project	ALL
Award	ALL

[illegible]

[illegible]

Account Category (Parent Level 3)	Account Category Description (Parent Level 3)
700000A	PERSONNEL SERVICES
700000A	PERSONNEL SERVICES
710000A	NON-PERSONNEL SERVICES
710000A	NON-PERSONNEL SERVICES
710000A	NON-PERSONNEL SERVICES
700000A	PERSONNEL SERVICES
700000A	PERSONNEL SERVICES
700000A	PERSONNEL SERVICES
700000A	PERSONNEL SERVICES
700000A	PERSONNEL SERVICES
710000A	NON-PERSONNEL SERVICES
700000A	PERSONNEL SERVICES
700000A	PERSONNEL SERVICES
710000A	NON-PERSONNEL SERVICES
710000A	NON-PERSONNEL SERVICES
710000A	NON-PERSONNEL SERVICES
710000A	NON-PERSONNEL SERVICES
710000A	NON-PERSONNEL SERVICES
710000A	NON-PERSONNEL SERVICES
710000A	NON-PERSONNEL SERVICES
700000A	PERSONNEL SERVICES
700000A	PERSONNEL SERVICES
710000A	NON-PERSONNEL SERVICES
710000A	NON-PERSONNEL SERVICES
710000A	NON-PERSONNEL SERVICES
710000A	NON-PERSONNEL SERVICES
710000A	NON-PERSONNEL SERVICES
700000A	PERSONNEL SERVICES
700000A	PERSONNEL SERVICES

710000A	NON-PERSONNEL SERVICES
700000A	PERSONNEL SERVICES
700000A	PERSONNEL SERVICES
710000A	NON-PERSONNEL SERVICES
700000A	PERSONNEL SERVICES
700000A	PERSONNEL SERVICES
710000A	NON-PERSONNEL SERVICES
710000A	NON-PERSONNEL SERVICES
700000A	PERSONNEL SERVICES
710000A	NON-PERSONNEL SERVICES
710000A	NON-PERSONNEL SERVICES
710000A	NON-PERSONNEL SERVICES
700000A	PERSONNEL SERVICES
700000A	PERSONNEL SERVICES
710000A	NON-PERSONNEL SERVICES
710000A	NON-PERSONNEL SERVICES
700000A	PERSONNEL SERVICES
700000A	PERSONNEL SERVICES
700000A	PERSONNEL SERVICES
700000A	PERSONNEL SERVICES
710000A	NON-PERSONNEL SERVICES
710000A	NON-PERSONNEL SERVICES
700000A	PERSONNEL SERVICES
710000A	NON-PERSONNEL SERVICES
700000A	PERSONNEL SERVICES

Account Group (Parent Level 1)	Account Group (Parent Level 1) Description	Account
701400C	FRINGE BENEFITS - CURR PERSONNEL	7014002
701300C	ADDITIONAL GROSS PAY	7013007
713100C	OTHER SERVICES & CHARGES	7131003
713100C	OTHER SERVICES & CHARGES	7131005
713200C	CONTRACTUAL SERVICES - OTHER	7132002
701400C	FRINGE BENEFITS - CURR PERSONNEL	7014003
701400C	FRINGE BENEFITS - CURR PERSONNEL	7014020
701400C	FRINGE BENEFITS - CURR PERSONNEL	7014016
701400C	FRINGE BENEFITS - CURR PERSONNEL	7014022
701200C	CONTINUING FULL TIME - OTHERS	7012003
713200C	CONTRACTUAL SERVICES - OTHER	7132001
701400C	FRINGE BENEFITS - CURR PERSONNEL	7014022
701400C	FRINGE BENEFITS - CURR PERSONNEL	7014016
715200C	P-CARD CLEARING ACCOUNT BUDGET TRACK	7152001
712100C	ENERGY COMM & BLDG RENTALS	7121009
713100C	OTHER SERVICES & CHARGES	7131011
713100C	OTHER SERVICES & CHARGES	7131009
712100C	ENERGY COMM & BLDG RENTALS	7121009
717100C	PURCHASES EQUIPMENT & MACHINERY	7171005
701500C	OVERTIME PAY	7015001
701400C	FRINGE BENEFITS - CURR PERSONNEL	7014003
711100C	SUPPLIES & MATERIALS	7111002
711100C	SUPPLIES & MATERIALS	7111011
717100C	PURCHASES EQUIPMENT & MACHINERY	7171003
715200C	P-CARD CLEARING ACCOUNT BUDGET TRACK	7152001
701200C	CONTINUING FULL TIME - OTHERS	7012003
701400C	FRINGE BENEFITS - CURR PERSONNEL	7014009

717100C	PURCHASES EQUIPMENT & MACHINERY	7171003
701400C	FRINGE BENEFITS - CURR PERSONNEL	7014002
701300C	ADDITIONAL GROSS PAY	7013007
715200C	P-CARD CLEARING ACCOUNT BUDGET TRACK	7152001
701400C	FRINGE BENEFITS - CURR PERSONNEL	7014020
701100C	CONTINUING FULL TIME	7011001
711100C	SUPPLIES & MATERIALS	7111011
712100C	ENERGY COMM & BLDG RENTALS	7121009
701400C	FRINGE BENEFITS - CURR PERSONNEL	7014019
713100C	OTHER SERVICES & CHARGES	7131002
713100C	OTHER SERVICES & CHARGES	7131003
713100C	OTHER SERVICES & CHARGES	7131009
701400C	FRINGE BENEFITS - CURR PERSONNEL	7014015
701300C	ADDITIONAL GROSS PAY	7013008
717100C	PURCHASES EQUIPMENT & MACHINERY	7171005
713100C	OTHER SERVICES & CHARGES	7131009
701100C	CONTINUING FULL TIME	7011001
701400C	FRINGE BENEFITS - CURR PERSONNEL	7014019
701400C	FRINGE BENEFITS - CURR PERSONNEL	7014008
712100C	ENERGY COMM & BLDG RENTALS	7121009
713200C	CONTRACTUAL SERVICES - OTHER	7132001
701400C	FRINGE BENEFITS - CURR PERSONNEL	7014009
711100C	SUPPLIES & MATERIALS	7111002
701400C	FRINGE BENEFITS - CURR PERSONNEL	7014015

Account Description	Program (Parent Level 2)	Program (Parent Level 2) Description
GROUP LIFE INSURANCE	AMP000	AGENCY MANAGEMENT PROGRAM
TERMINAL LEAVE	AMP000	AGENCY MANAGEMENT PROGRAM
TRAVEL - OUT OF CITY	HS0017	HUMAN SUPPORT OPERATIONS
MAINTENANCE & REPAIRS	HS0017	HUMAN SUPPORT OPERATIONS
IT CONSULTANT CONTRACT	HS0017	HUMAN SUPPORT OPERATIONS
HEALTH BENEFITS	AMP000	AGENCY MANAGEMENT PROGRAM
RETIREMENT	AMP000	AGENCY MANAGEMENT PROGRAM
DENTAL PLAN	AMP000	AGENCY MANAGEMENT PROGRAM
DC HEALTH BENEFIT	AMP000	AGENCY MANAGEMENT PROGRAM
CONTINUING PART TIME	AMP000	AGENCY MANAGEMENT PROGRAM
CONTRACTUAL SERVICES	HS0017	HUMAN SUPPORT OPERATIONS
DC HEALTH BENEFIT	AMP000	AGENCY MANAGEMENT PROGRAM
DENTAL PLAN	AMP000	AGENCY MANAGEMENT PROGRAM
P-CARD CLEARING ACCOUNT	AFO000	AGENCY FINANCIAL OPERATIONS
TELEPHONE, TELETYPE	HS0017	HUMAN SUPPORT OPERATIONS
OFFICE SUPPORT	HS0017	HUMAN SUPPORT OPERATIONS
PROF SERVICE FEES & SUPPLIES	HS0017	HUMAN SUPPORT OPERATIONS
TELEPHONE, TELETYPE	HS0017	HUMAN SUPPORT OPERATIONS
PURCHASES - OTHER	HS0017	HUMAN SUPPORT OPERATIONS
OVERTIME PAY	AMP000	AGENCY MANAGEMENT PROGRAM
HEALTH BENEFITS	AMP000	AGENCY MANAGEMENT PROGRAM
OFFICE SUPPLIES	HS0017	HUMAN SUPPORT OPERATIONS
GENERAL	HS0017	HUMAN SUPPORT OPERATIONS
PURCHASES EQUIPMENT	HS0017	HUMAN SUPPORT OPERATIONS
P-CARD CLEARING ACCOUNT	AMP000	AGENCY MANAGEMENT PROGRAM
CONTINUING PART TIME	AMP000	AGENCY MANAGEMENT PROGRAM
RETIREMENT CONTRACT	AMP000	AGENCY MANAGEMENT PROGRAM

PURCHASES EQUIPMENT	HS0017	HUMAN SUPPORT OPERATIONS
GROUP LIFE INSURANCE	AMP000	AGENCY MANAGEMENT PROGRAM
TERMINAL LEAVE	AMP000	AGENCY MANAGEMENT PROGRAM
P-CARD CLEARING ACCOUNT	PRG000	NO PROGRAM
RETIREMENT	AMP000	AGENCY MANAGEMENT PROGRAM
CONTINUING FULL TIME	AMP000	AGENCY MANAGEMENT PROGRAM
GENERAL	HS0017	HUMAN SUPPORT OPERATIONS
TELEPHONE, TELETYPE	HS0017	HUMAN SUPPORT OPERATIONS
MEDICARE CONTRIBUTION	AMP000	AGENCY MANAGEMENT PROGRAM
TRAVEL - LOCAL	HS0017	HUMAN SUPPORT OPERATIONS
TRAVEL - OUT OF CITY	HS0017	HUMAN SUPPORT OPERATIONS
PROF SERVICE FEES & BENEFITS	HS0017	HUMAN SUPPORT OPERATIONS
OPTICAL PLAN	AMP000	AGENCY MANAGEMENT PROGRAM
HOLIDAY PAY	AMP000	AGENCY MANAGEMENT PROGRAM
PURCHASES - OTHER	HS0017	HUMAN SUPPORT OPERATIONS
PROF SERVICE FEES & BENEFITS	AMP000	AGENCY MANAGEMENT PROGRAM
CONTINUING FULL TIME	AMP000	AGENCY MANAGEMENT PROGRAM
MEDICARE CONTRIBUTION	AMP000	AGENCY MANAGEMENT PROGRAM
MISC FRINGE BENEFITS	AMP000	AGENCY MANAGEMENT PROGRAM
TELEPHONE, TELETYPE	HS0017	HUMAN SUPPORT OPERATIONS
CONTRACTUAL SERVICE	HS0017	HUMAN SUPPORT OPERATIONS
RETIREMENT CONTRIBUTION	AMP000	AGENCY MANAGEMENT PROGRAM
OFFICE SUPPLIES	HS0017	HUMAN SUPPORT OPERATIONS
OPTICAL PLAN	AMP000	AGENCY MANAGEMENT PROGRAM

Program (Parent Level 1)	Program (Parent Level 1) Description	Program
AMP030	EXECUTIVE ADMINISTRATION	100151
AMP030	EXECUTIVE ADMINISTRATION	100151
H01701	AGENCY OVERSIGHT AND SUPPORT SER	700055
H01701	AGENCY OVERSIGHT AND SUPPORT SER	700055
H01701	AGENCY OVERSIGHT AND SUPPORT SER	700055
AMP030	EXECUTIVE ADMINISTRATION	100151
AMP030	EXECUTIVE ADMINISTRATION	100151
AMP030	EXECUTIVE ADMINISTRATION	100151
AMP030	EXECUTIVE ADMINISTRATION	100151
AMP030	EXECUTIVE ADMINISTRATION	100151
H01701	AGENCY OVERSIGHT AND SUPPORT SER	700055
AMP030	EXECUTIVE ADMINISTRATION	100151
AMP030	EXECUTIVE ADMINISTRATION	100151
AFO011	P-CARD CLEARING	150012
H01701	AGENCY OVERSIGHT AND SUPPORT SER	700055
H01701	AGENCY OVERSIGHT AND SUPPORT SER	700055
H01701	AGENCY OVERSIGHT AND SUPPORT SER	700055
H01701	AGENCY OVERSIGHT AND SUPPORT SER	700055
H01701	AGENCY OVERSIGHT AND SUPPORT SER	700055
AMP030	EXECUTIVE ADMINISTRATION	100151
AMP030	EXECUTIVE ADMINISTRATION	100151
H01701	AGENCY OVERSIGHT AND SUPPORT SER	700055
H01701	AGENCY OVERSIGHT AND SUPPORT SER	700055
H01701	AGENCY OVERSIGHT AND SUPPORT SER	700055
AMP030	EXECUTIVE ADMINISTRATION	100151
AMP030	EXECUTIVE ADMINISTRATION	100151
AMP030	EXECUTIVE ADMINISTRATION	100151

H01701	AGENCY OVERSIGHT AND SUPPORT SER	700055
AMP030	EXECUTIVE ADMINISTRATION	100151
AMP030	EXECUTIVE ADMINISTRATION	100151
PRG001	NO PROGRAM	0
AMP030	EXECUTIVE ADMINISTRATION	100151
AMP030	EXECUTIVE ADMINISTRATION	100151
H01701	AGENCY OVERSIGHT AND SUPPORT SER	700055
H01701	AGENCY OVERSIGHT AND SUPPORT SER	700055
AMP030	EXECUTIVE ADMINISTRATION	100151
H01701	AGENCY OVERSIGHT AND SUPPORT SER	700055
H01701	AGENCY OVERSIGHT AND SUPPORT SER	700055
H01701	AGENCY OVERSIGHT AND SUPPORT SER	700055
H01701	AGENCY OVERSIGHT AND SUPPORT SER	700055
AMP030	EXECUTIVE ADMINISTRATION	100151
AMP030	EXECUTIVE ADMINISTRATION	100151
H01701	AGENCY OVERSIGHT AND SUPPORT SER	700055
AMP030	EXECUTIVE ADMINISTRATION	100151
AMP030	EXECUTIVE ADMINISTRATION	100151
AMP030	EXECUTIVE ADMINISTRATION	100151
AMP030	EXECUTIVE ADMINISTRATION	100151
H01701	AGENCY OVERSIGHT AND SUPPORT SER	700055
H01701	AGENCY OVERSIGHT AND SUPPORT SER	700055
AMP030	EXECUTIVE ADMINISTRATION	100151
H01701	AGENCY OVERSIGHT AND SUPPORT SER	700055
AMP030	EXECUTIVE ADMINISTRATION	100151

Program Description	Cost Center (Parent Level 2)	Cost Center (Parent L
EXECUTIVE ADMINISTRATIO	HS016	OFFICE OF THE DEPUT
EXECUTIVE ADMINISTRATIO	HS016	OFFICE OF THE DEPUT
AGENCY OVERSIGHT AND SU	HS013	CHIEF OF STAFF ADM
AGENCY OVERSIGHT AND SU	HS013	CHIEF OF STAFF ADM
AGENCY OVERSIGHT AND SU	HS013	CHIEF OF STAFF ADM
EXECUTIVE ADMINISTRATIO	HS016	OFFICE OF THE DEPUT
EXECUTIVE ADMINISTRATIO	HS016	OFFICE OF THE DEPUT
EXECUTIVE ADMINISTRATIO	HS016	OFFICE OF THE DEPUT
EXECUTIVE ADMINISTRATIO	HS016	OFFICE OF THE DEPUT
EXECUTIVE ADMINISTRATIO	HS016	OFFICE OF THE DEPUT
AGENCY OVERSIGHT AND SU	HS013	CHIEF OF STAFF ADM
EXECUTIVE ADMINISTRATIO	HS016	OFFICE OF THE DEPUT
EXECUTIVE ADMINISTRATIO	HS016	OFFICE OF THE DEPUT
P-CARD CLEARING	AFO01	AGENCY FINANCIAL C
AGENCY OVERSIGHT AND SU	HS013	CHIEF OF STAFF ADM
AGENCY OVERSIGHT AND SU	HS013	CHIEF OF STAFF ADM
AGENCY OVERSIGHT AND SU	HS013	CHIEF OF STAFF ADM
AGENCY OVERSIGHT AND SU	HS013	CHIEF OF STAFF ADM
AGENCY OVERSIGHT AND SU	HS013	CHIEF OF STAFF ADM
EXECUTIVE ADMINISTRATIO	HS016	OFFICE OF THE DEPUT
EXECUTIVE ADMINISTRATIO	HS016	OFFICE OF THE DEPUT
AGENCY OVERSIGHT AND SU	HS013	CHIEF OF STAFF ADM
AGENCY OVERSIGHT AND SU	HS013	CHIEF OF STAFF ADM
AGENCY OVERSIGHT AND SU	HS013	CHIEF OF STAFF ADM
EXECUTIVE ADMINISTRATIO	HS016	OFFICE OF THE DEPUT
EXECUTIVE ADMINISTRATIO	HS016	OFFICE OF THE DEPUT
EXECUTIVE ADMINISTRATIO	HS016	OFFICE OF THE DEPUT

AGENCY OVERSIGHT AND SU	HS013	CHIEF OF STAFF ADM
EXECUTIVE ADMINISTRATIO	HS016	OFFICE OF THE DEPUT
EXECUTIVE ADMINISTRATIO	HS016	OFFICE OF THE DEPUT
NO PROGRAM	CO000	NO COST CENTER
EXECUTIVE ADMINISTRATIO	HS016	OFFICE OF THE DEPUT
EXECUTIVE ADMINISTRATIO	HS016	OFFICE OF THE DEPUT
AGENCY OVERSIGHT AND SU	HS013	CHIEF OF STAFF ADM
AGENCY OVERSIGHT AND SU	HS013	CHIEF OF STAFF ADM
EXECUTIVE ADMINISTRATIO	HS016	OFFICE OF THE DEPUT
AGENCY OVERSIGHT AND SU	HS013	CHIEF OF STAFF ADM
AGENCY OVERSIGHT AND SU	HS013	CHIEF OF STAFF ADM
AGENCY OVERSIGHT AND SU	HS013	CHIEF OF STAFF ADM
EXECUTIVE ADMINISTRATIO	HS016	OFFICE OF THE DEPUT
EXECUTIVE ADMINISTRATIO	HS016	OFFICE OF THE DEPUT
AGENCY OVERSIGHT AND SU	HS013	CHIEF OF STAFF ADM
EXECUTIVE ADMINISTRATIO	HS016	OFFICE OF THE DEPUT
EXECUTIVE ADMINISTRATIO	HS016	OFFICE OF THE DEPUT
EXECUTIVE ADMINISTRATIO	HS016	OFFICE OF THE DEPUT
EXECUTIVE ADMINISTRATIO	HS016	OFFICE OF THE DEPUT
AGENCY OVERSIGHT AND SU	HS013	CHIEF OF STAFF ADM
AGENCY OVERSIGHT AND SU	HS013	CHIEF OF STAFF ADM
EXECUTIVE ADMINISTRATIO	HS016	OFFICE OF THE DEPUT
AGENCY OVERSIGHT AND SU	HS013	CHIEF OF STAFF ADM
EXECUTIVE ADMINISTRATIO	HS016	OFFICE OF THE DEPUT

Cost Center (Parent Level 1)	Cost Center (Parent Level 1) Description	Cost Center
H1601	OFFICE OF THE DEPUTY MAYOR - D	70108
H1601	OFFICE OF THE DEPUTY MAYOR - D	70108
H1301	CHIEF OF STAFF ADMINISTRATIVE	70094
H1301	CHIEF OF STAFF ADMINISTRATIVE	70094
H1301	CHIEF OF STAFF ADMINISTRATIVE	70094
H1601	OFFICE OF THE DEPUTY MAYOR - D	70108
H1601	OFFICE OF THE DEPUTY MAYOR - D	70108
H1601	OFFICE OF THE DEPUTY MAYOR - D	70108
H1601	OFFICE OF THE DEPUTY MAYOR - D	70108
H1601	OFFICE OF THE DEPUTY MAYOR - D	70108
H1301	CHIEF OF STAFF ADMINISTRATIVE	70094
H1601	OFFICE OF THE DEPUTY MAYOR - D	70108
H1601	OFFICE OF THE DEPUTY MAYOR - D	70108
A0101	AGENCY FINANCIAL OPERATIONS I	10086
H1301	CHIEF OF STAFF ADMINISTRATIVE	70094
H1301	CHIEF OF STAFF ADMINISTRATIVE	70094
H1301	CHIEF OF STAFF ADMINISTRATIVE	70094
H1301	CHIEF OF STAFF ADMINISTRATIVE	70094
H1301	CHIEF OF STAFF ADMINISTRATIVE	70094
H1601	OFFICE OF THE DEPUTY MAYOR - D	70108
H1601	OFFICE OF THE DEPUTY MAYOR - D	70108
H1301	CHIEF OF STAFF ADMINISTRATIVE	70094
H1301	CHIEF OF STAFF ADMINISTRATIVE	70094
H1301	CHIEF OF STAFF ADMINISTRATIVE	70094
H1601	OFFICE OF THE DEPUTY MAYOR - D	70108
H1601	OFFICE OF THE DEPUTY MAYOR - D	70108
H1601	OFFICE OF THE DEPUTY MAYOR - D	70108

H1301	CHIEF OF STAFF ADMINISTRATIVE	70094
H1601	OFFICE OF THE DEPUTY MAYOR - D	70108
H1601	OFFICE OF THE DEPUTY MAYOR - D	70108
C0100	NO COST CENTER	00000
H1601	OFFICE OF THE DEPUTY MAYOR - D	70108
H1601	OFFICE OF THE DEPUTY MAYOR - D	70108
H1301	CHIEF OF STAFF ADMINISTRATIVE	70094
H1301	CHIEF OF STAFF ADMINISTRATIVE	70094
H1601	OFFICE OF THE DEPUTY MAYOR - D	70108
H1301	CHIEF OF STAFF ADMINISTRATIVE	70094
H1301	CHIEF OF STAFF ADMINISTRATIVE	70094
H1301	CHIEF OF STAFF ADMINISTRATIVE	70094
H1601	OFFICE OF THE DEPUTY MAYOR - D	70108
H1601	OFFICE OF THE DEPUTY MAYOR - D	70108
H1301	CHIEF OF STAFF ADMINISTRATIVE	70094
H1601	OFFICE OF THE DEPUTY MAYOR - D	70108
H1601	OFFICE OF THE DEPUTY MAYOR - D	70108
H1601	OFFICE OF THE DEPUTY MAYOR - D	70108
H1601	OFFICE OF THE DEPUTY MAYOR - D	70108
H1301	CHIEF OF STAFF ADMINISTRATIVE	70094
H1301	CHIEF OF STAFF ADMINISTRATIVE	70094
H1601	OFFICE OF THE DEPUTY MAYOR - D	70108
H1301	CHIEF OF STAFF ADMINISTRATIVE	70094
H1601	OFFICE OF THE DEPUTY MAYOR - D	70108

Cost Center Description	Project	Project Description	Award
OFFICE OF THE DEPUTY N	202251	HG0.LOCALF.LOCAL FUNDS	1000616
OFFICE OF THE DEPUTY N	202251	HG0.LOCALF.LOCAL FUNDS	1000704
DEPUTY CHIEF OF STAFF	202251	HG0.LOCALF.LOCAL FUNDS	1000704
DEPUTY CHIEF OF STAFF	401275	DMHHS FLEET SERVICES	1000704
DEPUTY CHIEF OF STAFF	400504	HG0.500235.IT ASSESSMENT	1000704
OFFICE OF THE DEPUTY N	202251	HG0.LOCALF.LOCAL FUNDS	1000704
OFFICE OF THE DEPUTY N	202251	HG0.LOCALF.LOCAL FUNDS	1000704
OFFICE OF THE DEPUTY N	202251	HG0.LOCALF.LOCAL FUNDS	1000616
OFFICE OF THE DEPUTY N	202251	HG0.LOCALF.LOCAL FUNDS	1000616
OFFICE OF THE DEPUTY N	202251	HG0.LOCALF.LOCAL FUNDS	1000704
DEPUTY CHIEF OF STAFF	202251	HG0.LOCALF.LOCAL FUNDS	1000704
OFFICE OF THE DEPUTY N	202251	HG0.LOCALF.LOCAL FUNDS	1000704
OFFICE OF THE DEPUTY N	202251	HG0.LOCALF.LOCAL FUNDS	1000704
P-CARD CLEARING	000000	NO PROJECT	0000000
DEPUTY CHIEF OF STAFF	400483	HC0.I23HC0.FY23 TELECOM - INTERAGENCY F	2001557
DEPUTY CHIEF OF STAFF	202251	HG0.LOCALF.LOCAL FUNDS	1000704
DEPUTY CHIEF OF STAFF	000000	NO PROJECT	0000000
DEPUTY CHIEF OF STAFF	400503	HG0.I23HG0.FY23 TELECOM - INTERAGENCY I	1000616
DEPUTY CHIEF OF STAFF	202251	HG0.LOCALF.LOCAL FUNDS	1000704
OFFICE OF THE DEPUTY N	202251	HG0.LOCALF.LOCAL FUNDS	1000704
OFFICE OF THE DEPUTY N	202251	HG0.LOCALF.LOCAL FUNDS	1000616
DEPUTY CHIEF OF STAFF	401015	HG0.PX0HG0.PURCHASE/TRAVEL CARD - HG0	1000704
DEPUTY CHIEF OF STAFF	202251	HG0.LOCALF.LOCAL FUNDS	1000704
DEPUTY CHIEF OF STAFF	202251	HG0.LOCALF.LOCAL FUNDS	1000704
OFFICE OF THE DEPUTY N	000000	NO PROJECT	0000000
OFFICE OF THE DEPUTY N	202251	HG0.LOCALF.LOCAL FUNDS	1000616
OFFICE OF THE DEPUTY N	202251	HG0.LOCALF.LOCAL FUNDS	1000616

DEPUTY CHIEF OF STAFF	401015	HG0.PX0HG0.PURCHASE/TRAVEL CARD - HG0	1000704
OFFICE OF THE DEPUTY M	202251	HG0.LOCALF.LOCAL FUNDS	1000704
OFFICE OF THE DEPUTY M	202251	HG0.LOCALF.LOCAL FUNDS	1000616
NO COST CENTER	000000	NO PROJECT	0000000
OFFICE OF THE DEPUTY M	202251	HG0.LOCALF.LOCAL FUNDS	1000616
OFFICE OF THE DEPUTY M	202251	HG0.LOCALF.LOCAL FUNDS	1000704
DEPUTY CHIEF OF STAFF	401015	HG0.PX0HG0.PURCHASE/TRAVEL CARD - HG0	1000704
DEPUTY CHIEF OF STAFF	400503	HG0.I23HG0.FY23 TELECOM - INTERAGENCY I	1000704
OFFICE OF THE DEPUTY M	202251	HG0.LOCALF.LOCAL FUNDS	1000704
DEPUTY CHIEF OF STAFF	401015	HG0.PX0HG0.PURCHASE/TRAVEL CARD - HG0	1000704
DEPUTY CHIEF OF STAFF	401015	HG0.PX0HG0.PURCHASE/TRAVEL CARD - HG0	1000704
DEPUTY CHIEF OF STAFF	202251	HG0.LOCALF.LOCAL FUNDS	1000704
OFFICE OF THE DEPUTY M	202251	HG0.LOCALF.LOCAL FUNDS	1000704
OFFICE OF THE DEPUTY M	202251	HG0.LOCALF.LOCAL FUNDS	1000704
DEPUTY CHIEF OF STAFF	401465	DMHHS/EOM SUPPORT SERVICES	1000704
OFFICE OF THE DEPUTY M	202251	HG0.LOCALF.LOCAL FUNDS	1000704
OFFICE OF THE DEPUTY M	202251	HG0.LOCALF.LOCAL FUNDS	1000616
OFFICE OF THE DEPUTY M	202251	HG0.LOCALF.LOCAL FUNDS	1000616
OFFICE OF THE DEPUTY M	202251	HG0.LOCALF.LOCAL FUNDS	1000704
DEPUTY CHIEF OF STAFF	400502	HG0.500242.IT ASSESSMENT	1000704
DEPUTY CHIEF OF STAFF	400503	HG0.I23HG0.FY23 TELECOM - INTERAGENCY I	1000704
OFFICE OF THE DEPUTY M	202251	HG0.LOCALF.LOCAL FUNDS	1000704
DEPUTY CHIEF OF STAFF	202251	HG0.LOCALF.LOCAL FUNDS	1000704
OFFICE OF THE DEPUTY M	202251	HG0.LOCALF.LOCAL FUNDS	1000616

Award Description	Initial Budget	Adjustment Budget	Total Budget	Commitment
HG0.LOCALF.FY2024.FY2	\$0.00	\$0.00	\$0.00	\$0.00
HG0.LOCALF.FY2025	\$0.00	\$0.00	\$0.00	\$0.00
HG0.LOCALF.FY2025	\$5,000.00	\$0.00	\$5,000.00	\$0.00
HG0.LOCALF.FY2025	\$28,732.89	\$0.00	\$28,732.89	\$0.00
HG0.LOCALF.FY2025	\$4,337.84	\$0.00	\$4,337.84	\$0.00
HG0.LOCALF.FY2025	\$0.00	\$0.00	\$0.00	\$0.00
HG0.LOCALF.FY2025	\$0.00	\$0.00	\$0.00	\$0.00
HG0.LOCALF.FY2024.FY2	\$0.00	\$0.00	\$0.00	\$0.00
HG0.LOCALF.FY2024.FY2	\$0.00	\$0.00	\$0.00	\$0.00
HG0.LOCALF.FY2025	\$105,187.98	\$0.00	\$105,187.98	\$0.00
HG0.LOCALF.FY2025	\$10,296.62	\$0.00	\$10,296.62	\$0.00
HG0.LOCALF.FY2025	\$0.00	\$0.00	\$0.00	\$0.00
HG0.LOCALF.FY2025	\$0.00	\$0.00	\$0.00	\$0.00
NO AWARD	\$0.00	\$0.00	\$0.00	\$0.00
HC0.8200.41CNPF.ELC GR	\$0.00	\$0.00	\$0.00	\$0.00
HG0.LOCALF.FY2025	\$0.00	\$0.00	\$0.00	\$0.00
NO AWARD	\$0.00	\$0.00	\$0.00	\$0.00
HG0.LOCALF.FY2024.FY2	\$0.00	\$0.00	\$0.00	\$0.00
HG0.LOCALF.FY2025	\$437.94	-\$437.94	\$0.00	\$0.00
HG0.LOCALF.FY2025	\$0.00	\$0.00	\$0.00	\$0.00
HG0.LOCALF.FY2024.FY2	\$0.00	\$0.00	\$0.00	\$0.00
HG0.LOCALF.FY2025	\$10,000.00	\$0.00	\$10,000.00	\$0.00
HG0.LOCALF.FY2025	\$3,900.00	\$0.00	\$3,900.00	\$0.00
HG0.LOCALF.FY2025	\$19,200.00	-\$5,562.06	\$13,637.94	\$0.00
NO AWARD	\$0.00	\$0.00	\$0.00	\$0.00
HG0.LOCALF.FY2024.FY2	\$0.00	\$0.00	\$0.00	\$0.00
HG0.LOCALF.FY2024.FY2	\$0.00	\$0.00	\$0.00	\$0.00

HG0.LOCALF.FY2025	\$10,800.00	\$0.00	\$10,800.00	\$0.00
HG0.LOCALF.FY2025	\$0.00	\$0.00	\$0.00	\$0.00
HG0.LOCALF.FY2024.FY2	\$0.00	\$0.00	\$0.00	\$0.00
NO AWARD	\$0.00	\$0.00	\$0.00	\$0.00
HG0.LOCALF.FY2024.FY2	\$0.00	\$0.00	\$0.00	\$0.00
HG0.LOCALF.FY2025	\$1,724,766.08	\$0.00	\$1,724,766.08	\$0.00
HG0.LOCALF.FY2025	\$2,100.00	\$0.00	\$2,100.00	\$0.00
HG0.LOCALF.FY2025	\$11,445.98	\$0.00	\$11,445.98	\$0.00
HG0.LOCALF.FY2025	\$0.00	\$0.00	\$0.00	\$0.00
HG0.LOCALF.FY2025	\$774.51	\$0.00	\$774.51	\$0.00
HG0.LOCALF.FY2025	\$15,000.00	\$0.00	\$15,000.00	\$0.00
HG0.LOCALF.FY2025	\$173,367.00	-\$49,022.00	\$124,345.00	\$0.00
HG0.LOCALF.FY2025	\$0.00	\$0.00	\$0.00	\$0.00
HG0.LOCALF.FY2025	\$0.00	\$0.00	\$0.00	\$0.00
HG0.LOCALF.FY2025	\$0.00	\$6,000.00	\$6,000.00	\$0.00
HG0.LOCALF.FY2025	\$0.00	\$0.00	\$0.00	\$0.00
HG0.LOCALF.FY2024.FY2	\$0.00	\$0.00	\$0.00	\$0.00
HG0.LOCALF.FY2024.FY2	\$0.00	\$0.00	\$0.00	\$0.00
HG0.LOCALF.FY2025	\$316,582.06	\$0.00	\$316,582.06	\$0.00
HG0.LOCALF.FY2025	\$5,606.84	\$0.00	\$5,606.84	\$0.00
HG0.LOCALF.FY2025	\$3,583.36	\$0.00	\$3,583.36	\$0.00
HG0.LOCALF.FY2025	\$0.00	\$0.00	\$0.00	\$0.00
HG0.LOCALF.FY2025	\$0.00	\$0.00	\$0.00	\$0.00
HG0.LOCALF.FY2024.FY2	\$0.00	\$0.00	\$0.00	\$0.00
Total:	\$2,451,119.10	-\$49,022.00	\$2,402,097.10	\$0.00

Obligation	Expenditure	Budget Reservations	Available Budget
\$0.00	\$48.47	\$0.00	-\$48.47
\$0.00	\$16,677.58	\$0.00	-\$16,677.58
\$0.00	\$0.00	\$0.00	\$5,000.00
\$0.00	\$16,066.44	\$0.00	\$12,666.45
\$0.00	\$4,337.84	\$0.00	\$0.00
\$0.00	\$117,953.61	\$0.00	-\$117,953.61
\$0.00	\$66,424.95	\$0.00	-\$66,424.95
\$0.00	\$139.87	\$0.00	-\$139.87
\$0.00	\$0.00	\$0.00	\$0.00
\$0.00	\$29,625.17	\$0.00	\$75,562.81
\$0.00	\$0.00	\$0.00	\$10,296.62
\$0.00	\$5,229.16	\$0.00	-\$5,229.16
\$0.00	\$1,664.69	\$0.00	-\$1,664.69
\$0.00	\$0.00	\$0.00	\$0.00
\$0.00	\$0.00	\$0.00	\$0.00
\$0.00	\$11,127.16	\$0.00	-\$11,127.16
\$0.00	\$1,887.57	\$0.00	-\$1,887.57
\$0.00	\$0.00	\$0.00	\$0.00
\$0.00	\$0.00	\$0.00	\$0.00
\$0.00	\$463.73	\$0.00	-\$463.73
\$0.00	\$5,778.73	\$0.00	-\$5,778.73
\$0.00	\$0.00	\$0.00	\$10,000.00
\$0.00	\$1,504.00	\$0.00	\$2,396.00
\$0.00	\$0.00	\$0.00	\$13,637.94
\$0.00	\$1,887.57	\$0.00	-\$1,887.57
\$0.00	\$0.00	\$0.00	\$0.00
\$0.00	\$5,171.96	\$0.00	-\$5,171.96

\$0.00	\$0.00	\$0.00	\$10,800.00
\$0.00	\$761.23	\$0.00	-\$761.23
\$0.00	\$3,895.74	\$0.00	-\$3,895.74
\$0.00	-\$1,887.57	\$0.00	\$1,887.57
\$0.00	\$2,456.25	\$0.00	-\$2,456.25
\$0.00	\$1,300,661.28	\$0.00	\$424,104.80
\$0.00	\$0.00	\$0.00	\$2,100.00
\$0.00	\$21,323.80	\$0.00	-\$9,877.82
\$0.00	\$19,341.56	\$0.00	-\$19,341.56
\$0.00	\$0.00	\$0.00	\$774.51
\$0.00	\$0.00	\$0.00	\$15,000.00
\$0.00	\$10,490.06	\$0.00	\$113,854.94
\$0.00	\$1,415.42	\$0.00	-\$1,415.42
\$0.00	\$480.17	\$0.00	-\$480.17
\$0.00	\$5,998.78	\$0.00	\$1.22
\$0.00	\$0.00	\$0.00	\$0.00
\$0.00	\$81,852.34	\$0.00	-\$81,852.34
\$0.00	\$1,293.58	\$0.00	-\$1,293.58
\$0.00	\$0.00	\$0.00	\$316,582.06
\$0.00	\$5,606.82	\$0.00	\$0.02
\$0.00	\$0.00	\$0.00	\$3,583.36
\$0.00	\$76,365.38	\$0.00	-\$76,365.38
\$0.00	\$107.52	\$0.00	-\$107.52
\$0.00	\$112.64	\$0.00	-\$112.64
\$0.00	\$1,816,263.50	\$0.00	\$585,833.60

Run date/Time: 01-22-2026 01:36:05

[illegible]

[illegible]

R025 YTD Budgetary Control Analysis Report - DC Authority Reporting

Control Budget	DC Authority Reporting
Fiscal Year	2026
Period	ALL
Agency	HG0
Fund	ALL
Account	ALL
Program	ALL
Cost Center	ALL
Project	ALL
Award	ALL

[illegible]

[illegible]

Account Category (Parent Level 3)	Account Category Description (Parent Level 3)
700000A	PERSONNEL SERVICES
710000A	NON-PERSONNEL SERVICES
710000A	NON-PERSONNEL SERVICES
700000A	PERSONNEL SERVICES
700000A	PERSONNEL SERVICES
710000A	NON-PERSONNEL SERVICES
700000A	PERSONNEL SERVICES
700000A	PERSONNEL SERVICES
700000A	PERSONNEL SERVICES
700000A	PERSONNEL SERVICES
710000A	NON-PERSONNEL SERVICES
710000A	NON-PERSONNEL SERVICES
700000A	PERSONNEL SERVICES
710000A	NON-PERSONNEL SERVICES
710000A	NON-PERSONNEL SERVICES
700000A	PERSONNEL SERVICES
710000A	NON-PERSONNEL SERVICES
710000A	NON-PERSONNEL SERVICES
710000A	NON-PERSONNEL SERVICES
710000A	NON-PERSONNEL SERVICES
700000A	PERSONNEL SERVICES
710000A	NON-PERSONNEL SERVICES
700000A	PERSONNEL SERVICES
710000A	NON-PERSONNEL SERVICES
710000A	NON-PERSONNEL SERVICES
700000A	PERSONNEL SERVICES
710000A	NON-PERSONNEL SERVICES
700000A	PERSONNEL SERVICES

700000A	PERSONNEL SERVICES
710000A	NON-PERSONNEL SERVICES
710000A	NON-PERSONNEL SERVICES
700000A	PERSONNEL SERVICES
700000A	PERSONNEL SERVICES
700000A	PERSONNEL SERVICES
710000A	NON-PERSONNEL SERVICES
710000A	NON-PERSONNEL SERVICES
700000A	PERSONNEL SERVICES
700000A	PERSONNEL SERVICES
710000A	NON-PERSONNEL SERVICES
700000A	PERSONNEL SERVICES
710000A	NON-PERSONNEL SERVICES
700000A	PERSONNEL SERVICES

Account Group (Parent Level 1)	Account Group (Parent Level 1) Description	Account
701400C	FRINGE BENEFITS - CURR PERSONNEL	7014003
713100C	OTHER SERVICES & CHARGES	7131009
713100C	OTHER SERVICES & CHARGES	7131005
701400C	FRINGE BENEFITS - CURR PERSONNEL	7014022
701400C	FRINGE BENEFITS - CURR PERSONNEL	7014015
715200C	P-CARD CLEARING ACCOUNT BUDGET TRACK	7152001
701400C	FRINGE BENEFITS - CURR PERSONNEL	7014022
701400C	FRINGE BENEFITS - CURR PERSONNEL	7014016
701200C	CONTINUING FULL TIME - OTHERS	7012003
701400C	FRINGE BENEFITS - CURR PERSONNEL	7014016
712100C	ENERGY COMM & BLDG RENTALS	7121009
713200C	CONTRACTUAL SERVICES - OTHER	7132001
701400C	FRINGE BENEFITS - CURR PERSONNEL	7014002
711100C	SUPPLIES & MATERIALS	7111002
717100C	PURCHASES EQUIPMENT & MACHINERY	7171003
701400C	FRINGE BENEFITS - CURR PERSONNEL	7014002
713100C	OTHER SERVICES & CHARGES	7131003
713200C	CONTRACTUAL SERVICES - OTHER	7132002
717100C	PURCHASES EQUIPMENT & MACHINERY	7171003
701400C	FRINGE BENEFITS - CURR PERSONNEL	7014019
717100C	PURCHASES EQUIPMENT & MACHINERY	7171005
701100C	CONTINUING FULL TIME	7011001
711100C	SUPPLIES & MATERIALS	7111011
712100C	ENERGY COMM & BLDG RENTALS	7121009
701400C	FRINGE BENEFITS - CURR PERSONNEL	7014019
711100C	SUPPLIES & MATERIALS	7111011
701400C	FRINGE BENEFITS - CURR PERSONNEL	7014009

701300C	ADDITIONAL GROSS PAY	7013007
713100C	OTHER SERVICES & CHARGES	7131002
713100C	OTHER SERVICES & CHARGES	7131003
701400C	FRINGE BENEFITS - CURR PERSONNEL	7014015
701100C	CONTINUING FULL TIME	7011001
701400C	FRINGE BENEFITS - CURR PERSONNEL	7014008
713200C	CONTRACTUAL SERVICES - OTHER	7132001
717100C	PURCHASES EQUIPMENT & MACHINERY	7171005
701400C	FRINGE BENEFITS - CURR PERSONNEL	7014003
701400C	FRINGE BENEFITS - CURR PERSONNEL	7014020
713100C	OTHER SERVICES & CHARGES	7131009
701400C	FRINGE BENEFITS - CURR PERSONNEL	7014009
712100C	ENERGY COMM & BLDG RENTALS	7121009
701400C	FRINGE BENEFITS - CURR PERSONNEL	7014020

Account Description	Program (Parent Level 2)	Program (Parent Level 2) Description
HEALTH BENEFITS	AMP000	AGENCY MANAGEMENT PROGRAM
PROF SERVICE FEES &	HS0017	HUMAN SUPPORT OPERATIONS
MAINTENANCE & RE	HS0017	HUMAN SUPPORT OPERATIONS
DC HEALTH BENEFIT	AMP000	AGENCY MANAGEMENT PROGRAM
OPTICAL PLAN	AMP000	AGENCY MANAGEMENT PROGRAM
P-CARD CLEARING AC	AFO000	AGENCY FINANCIAL OPERATIONS
DC HEALTH BENEFIT	AMP000	AGENCY MANAGEMENT PROGRAM
DENTAL PLAN	AMP000	AGENCY MANAGEMENT PROGRAM
CONTINUING PART T	AMP000	AGENCY MANAGEMENT PROGRAM
DENTAL PLAN	AMP000	AGENCY MANAGEMENT PROGRAM
TELEPHONE, TELETY	HS0017	HUMAN SUPPORT OPERATIONS
CONTRACTUAL SERV	HS0017	HUMAN SUPPORT OPERATIONS
GROUP LIFE INSURAN	AMP000	AGENCY MANAGEMENT PROGRAM
OFFICE SUPPLIES	HS0017	HUMAN SUPPORT OPERATIONS
PURCHASES EQUIPM	HS0017	HUMAN SUPPORT OPERATIONS
GROUP LIFE INSURAN	AMP000	AGENCY MANAGEMENT PROGRAM
TRAVEL - OUT OF CIT	HS0017	HUMAN SUPPORT OPERATIONS
IT CONSULTANT CON	HS0017	HUMAN SUPPORT OPERATIONS
PURCHASES EQUIPM	HS0017	HUMAN SUPPORT OPERATIONS
MEDICARE CONTRIBU	AMP000	AGENCY MANAGEMENT PROGRAM
PURCHASES - OTHER	HS0017	HUMAN SUPPORT OPERATIONS
CONTINUING FULL TI	AMP000	AGENCY MANAGEMENT PROGRAM
GENERAL	HS0017	HUMAN SUPPORT OPERATIONS
TELEPHONE, TELETY	HS0017	HUMAN SUPPORT OPERATIONS
MEDICARE CONTRIBU	AMP000	AGENCY MANAGEMENT PROGRAM
GENERAL	HS0017	HUMAN SUPPORT OPERATIONS
RETIREMENT CONTR	AMP000	AGENCY MANAGEMENT PROGRAM

TERMINAL LEAVE	AMP000	AGENCY MANAGEMENT PROGRAM
TRAVEL - LOCAL	HS0017	HUMAN SUPPORT OPERATIONS
TRAVEL - OUT OF CITY	HS0017	HUMAN SUPPORT OPERATIONS
OPTICAL PLAN	AMP000	AGENCY MANAGEMENT PROGRAM
CONTINUING FULL TIME	AMP000	AGENCY MANAGEMENT PROGRAM
MISC FRINGE BENEFITS	AMP000	AGENCY MANAGEMENT PROGRAM
CONTRACTUAL SERVICES	HS0017	HUMAN SUPPORT OPERATIONS
PURCHASES - OTHER	HS0017	HUMAN SUPPORT OPERATIONS
HEALTH BENEFITS	AMP000	AGENCY MANAGEMENT PROGRAM
RETIREMENT	AMP000	AGENCY MANAGEMENT PROGRAM
PROF SERVICE FEES &	HS0017	HUMAN SUPPORT OPERATIONS
RETIREMENT CONTR	AMP000	AGENCY MANAGEMENT PROGRAM
TELEPHONE, TELETYPE	HS0017	HUMAN SUPPORT OPERATIONS
RETIREMENT	AMP000	AGENCY MANAGEMENT PROGRAM

Program (Parent Level 1)	Program (Parent Level 1) Description	Program
AMP030	EXECUTIVE ADMINISTRATION	100151
H01701	AGENCY OVERSIGHT AND SUPPORT SER	700055
H01701	AGENCY OVERSIGHT AND SUPPORT SER	700055
AMP030	EXECUTIVE ADMINISTRATION	100151
AMP030	EXECUTIVE ADMINISTRATION	100151
AFO011	P-CARD CLEARING	150012
AMP030	EXECUTIVE ADMINISTRATION	100151
AMP030	EXECUTIVE ADMINISTRATION	100151
AMP030	EXECUTIVE ADMINISTRATION	100151
AMP030	EXECUTIVE ADMINISTRATION	100151
H01701	AGENCY OVERSIGHT AND SUPPORT SER	700055
H01701	AGENCY OVERSIGHT AND SUPPORT SER	700055
AMP030	EXECUTIVE ADMINISTRATION	100151
H01701	AGENCY OVERSIGHT AND SUPPORT SER	700055
H01701	AGENCY OVERSIGHT AND SUPPORT SER	700055
AMP030	EXECUTIVE ADMINISTRATION	100151
H01701	AGENCY OVERSIGHT AND SUPPORT SER	700055
H01701	AGENCY OVERSIGHT AND SUPPORT SER	700055
H01701	AGENCY OVERSIGHT AND SUPPORT SER	700055
H01701	AGENCY OVERSIGHT AND SUPPORT SER	700055
AMP030	EXECUTIVE ADMINISTRATION	100151
H01701	AGENCY OVERSIGHT AND SUPPORT SER	700055
AMP030	EXECUTIVE ADMINISTRATION	100151
H01701	AGENCY OVERSIGHT AND SUPPORT SER	700055
H01701	AGENCY OVERSIGHT AND SUPPORT SER	700055
AMP030	EXECUTIVE ADMINISTRATION	100151
H01701	AGENCY OVERSIGHT AND SUPPORT SER	700055
AMP030	EXECUTIVE ADMINISTRATION	100151

AMP030	EXECUTIVE ADMINISTRATION	100151
H01701	AGENCY OVERSIGHT AND SUPPORT SER	700055
H01701	AGENCY OVERSIGHT AND SUPPORT SER	700055
AMP030	EXECUTIVE ADMINISTRATION	100151
AMP030	EXECUTIVE ADMINISTRATION	100151
AMP030	EXECUTIVE ADMINISTRATION	100151
H01701	AGENCY OVERSIGHT AND SUPPORT SER	700055
H01701	AGENCY OVERSIGHT AND SUPPORT SER	700055
AMP030	EXECUTIVE ADMINISTRATION	100151
AMP030	EXECUTIVE ADMINISTRATION	100151
H01701	AGENCY OVERSIGHT AND SUPPORT SER	700055
AMP030	EXECUTIVE ADMINISTRATION	100151
H01701	AGENCY OVERSIGHT AND SUPPORT SER	700055
AMP030	EXECUTIVE ADMINISTRATION	100151

Program Description	Cost Center (Parent Level 2)	Cost Center (Parent L
EXECUTIVE ADMINISTRATIO	HS016	OFFICE OF THE DEPUT
AGENCY OVERSIGHT AND SU	HS013	CHIEF OF STAFF ADM
AGENCY OVERSIGHT AND SU	HS013	CHIEF OF STAFF ADM
EXECUTIVE ADMINISTRATIO	HS016	OFFICE OF THE DEPUT
EXECUTIVE ADMINISTRATIO	HS016	OFFICE OF THE DEPUT
P-CARD CLEARING	AFO01	AGENCY FINANCIAL C
EXECUTIVE ADMINISTRATIO	HS016	OFFICE OF THE DEPUT
EXECUTIVE ADMINISTRATIO	HS016	OFFICE OF THE DEPUT
EXECUTIVE ADMINISTRATIO	HS016	OFFICE OF THE DEPUT
EXECUTIVE ADMINISTRATIO	HS016	OFFICE OF THE DEPUT
AGENCY OVERSIGHT AND SU	HS013	CHIEF OF STAFF ADM
AGENCY OVERSIGHT AND SU	HS013	CHIEF OF STAFF ADM
EXECUTIVE ADMINISTRATIO	HS016	OFFICE OF THE DEPUT
AGENCY OVERSIGHT AND SU	HS013	CHIEF OF STAFF ADM
AGENCY OVERSIGHT AND SU	HS013	CHIEF OF STAFF ADM
EXECUTIVE ADMINISTRATIO	HS016	OFFICE OF THE DEPUT
AGENCY OVERSIGHT AND SU	HS013	CHIEF OF STAFF ADM
AGENCY OVERSIGHT AND SU	HS013	CHIEF OF STAFF ADM
AGENCY OVERSIGHT AND SU	HS013	CHIEF OF STAFF ADM
EXECUTIVE ADMINISTRATIO	HS016	OFFICE OF THE DEPUT
AGENCY OVERSIGHT AND SU	HS013	CHIEF OF STAFF ADM
EXECUTIVE ADMINISTRATIO	HS016	OFFICE OF THE DEPUT
AGENCY OVERSIGHT AND SU	HS013	CHIEF OF STAFF ADM
AGENCY OVERSIGHT AND SU	HS013	CHIEF OF STAFF ADM
EXECUTIVE ADMINISTRATIO	HS016	OFFICE OF THE DEPUT
AGENCY OVERSIGHT AND SU	HS013	CHIEF OF STAFF ADM
EXECUTIVE ADMINISTRATIO	HS016	OFFICE OF THE DEPUT

EXECUTIVE ADMINISTRATIO	HS016	OFFICE OF THE DEPUT
AGENCY OVERSIGHT AND SU	HS013	CHIEF OF STAFF ADM
AGENCY OVERSIGHT AND SU	HS013	CHIEF OF STAFF ADM
EXECUTIVE ADMINISTRATIO	HS016	OFFICE OF THE DEPUT
EXECUTIVE ADMINISTRATIO	HS016	OFFICE OF THE DEPUT
EXECUTIVE ADMINISTRATIO	HS016	OFFICE OF THE DEPUT
AGENCY OVERSIGHT AND SU	HS013	CHIEF OF STAFF ADM
AGENCY OVERSIGHT AND SU	HS013	CHIEF OF STAFF ADM
EXECUTIVE ADMINISTRATIO	HS016	OFFICE OF THE DEPUT
EXECUTIVE ADMINISTRATIO	HS016	OFFICE OF THE DEPUT
AGENCY OVERSIGHT AND SU	HS013	CHIEF OF STAFF ADM
EXECUTIVE ADMINISTRATIO	HS016	OFFICE OF THE DEPUT
AGENCY OVERSIGHT AND SU	HS013	CHIEF OF STAFF ADM
EXECUTIVE ADMINISTRATIO	HS016	OFFICE OF THE DEPUT

Cost Center (Parent Level 1)	Cost Center (Parent Level 1) Description	Cost Center
H1601	OFFICE OF THE DEPUTY MAYOR - D	70108
H1301	CHIEF OF STAFF ADMINISTRATIVE	70094
H1301	CHIEF OF STAFF ADMINISTRATIVE	70094
H1601	OFFICE OF THE DEPUTY MAYOR - D	70108
H1601	OFFICE OF THE DEPUTY MAYOR - D	70108
A0101	AGENCY FINANCIAL OPERATIONS I	10086
H1601	OFFICE OF THE DEPUTY MAYOR - D	70108
H1601	OFFICE OF THE DEPUTY MAYOR - D	70108
H1601	OFFICE OF THE DEPUTY MAYOR - D	70108
H1601	OFFICE OF THE DEPUTY MAYOR - D	70108
H1301	CHIEF OF STAFF ADMINISTRATIVE	70094
H1301	CHIEF OF STAFF ADMINISTRATIVE	70094
H1601	OFFICE OF THE DEPUTY MAYOR - D	70108
H1301	CHIEF OF STAFF ADMINISTRATIVE	70094
H1301	CHIEF OF STAFF ADMINISTRATIVE	70094
H1601	OFFICE OF THE DEPUTY MAYOR - D	70108
H1301	CHIEF OF STAFF ADMINISTRATIVE	70094
H1301	CHIEF OF STAFF ADMINISTRATIVE	70094
H1301	CHIEF OF STAFF ADMINISTRATIVE	70094
H1601	OFFICE OF THE DEPUTY MAYOR - D	70108
H1301	CHIEF OF STAFF ADMINISTRATIVE	70094
H1301	CHIEF OF STAFF ADMINISTRATIVE	70094
H1301	CHIEF OF STAFF ADMINISTRATIVE	70094
H1601	OFFICE OF THE DEPUTY MAYOR - D	70108
H1301	CHIEF OF STAFF ADMINISTRATIVE	70094
H1301	CHIEF OF STAFF ADMINISTRATIVE	70094
H1601	OFFICE OF THE DEPUTY MAYOR - D	70108
H1301	CHIEF OF STAFF ADMINISTRATIVE	70094
H1601	OFFICE OF THE DEPUTY MAYOR - D	70108

H1601	OFFICE OF THE DEPUTY MAYOR - D	70108
H1301	CHIEF OF STAFF ADMINISTRATIVE	70094
H1301	CHIEF OF STAFF ADMINISTRATIVE	70094
H1601	OFFICE OF THE DEPUTY MAYOR - D	70108
H1601	OFFICE OF THE DEPUTY MAYOR - D	70108
H1601	OFFICE OF THE DEPUTY MAYOR - D	70108
H1301	CHIEF OF STAFF ADMINISTRATIVE	70094
H1301	CHIEF OF STAFF ADMINISTRATIVE	70094
H1601	OFFICE OF THE DEPUTY MAYOR - D	70108
H1601	OFFICE OF THE DEPUTY MAYOR - D	70108
H1301	CHIEF OF STAFF ADMINISTRATIVE	70094
H1601	OFFICE OF THE DEPUTY MAYOR - D	70108
H1301	CHIEF OF STAFF ADMINISTRATIVE	70094
H1601	OFFICE OF THE DEPUTY MAYOR - D	70108

Cost Center Description	Project	Project Description	Award
OFFICE OF THE DEPUTY N	202251	HG0.LOCALF.LOCAL FUNDS	1000704
DEPUTY CHIEF OF STAFF	202251	HG0.LOCALF.LOCAL FUNDS	1001098
DEPUTY CHIEF OF STAFF	401275	DMHHS FLEET SERVICES	1001098
OFFICE OF THE DEPUTY N	202251	HG0.LOCALF.LOCAL FUNDS	1001098
OFFICE OF THE DEPUTY N	202251	HG0.LOCALF.LOCAL FUNDS	1001098
P-CARD CLEARING	000000	NO PROJECT	0000000
OFFICE OF THE DEPUTY N	202251	HG0.LOCALF.LOCAL FUNDS	1000704
OFFICE OF THE DEPUTY N	202251	HG0.LOCALF.LOCAL FUNDS	1000704
OFFICE OF THE DEPUTY N	202251	HG0.LOCALF.LOCAL FUNDS	1001098
OFFICE OF THE DEPUTY N	202251	HG0.LOCALF.LOCAL FUNDS	1001098
DEPUTY CHIEF OF STAFF	400503	HG0.I23HG0.FY23 TELECOM - INTERAGENCY I	1001098
DEPUTY CHIEF OF STAFF	202251	HG0.LOCALF.LOCAL FUNDS	1001098
OFFICE OF THE DEPUTY N	202251	HG0.LOCALF.LOCAL FUNDS	1001098
DEPUTY CHIEF OF STAFF	401015	HG0.PX0HG0.PURCHASE/TRAVEL CARD - HG0	1000704
DEPUTY CHIEF OF STAFF	401015	HG0.PX0HG0.PURCHASE/TRAVEL CARD - HG0	1000704
OFFICE OF THE DEPUTY N	202251	HG0.LOCALF.LOCAL FUNDS	1000704
DEPUTY CHIEF OF STAFF	202251	HG0.LOCALF.LOCAL FUNDS	1001098
DEPUTY CHIEF OF STAFF	400504	HG0.500235.IT ASSESSMENT	1001098
DEPUTY CHIEF OF STAFF	202251	HG0.LOCALF.LOCAL FUNDS	1001098
OFFICE OF THE DEPUTY N	202251	HG0.LOCALF.LOCAL FUNDS	1001098
DEPUTY CHIEF OF STAFF	401465	DMHHS/EOM SUPPORT SERVICES	1000616
OFFICE OF THE DEPUTY N	202251	HG0.LOCALF.LOCAL FUNDS	1000704
DEPUTY CHIEF OF STAFF	401015	HG0.PX0HG0.PURCHASE/TRAVEL CARD - HG0	1000704
DEPUTY CHIEF OF STAFF	400503	HG0.I23HG0.FY23 TELECOM - INTERAGENCY I	1000704
OFFICE OF THE DEPUTY N	202251	HG0.LOCALF.LOCAL FUNDS	1000704
DEPUTY CHIEF OF STAFF	202251	HG0.LOCALF.LOCAL FUNDS	1001098
OFFICE OF THE DEPUTY N	202251	HG0.LOCALF.LOCAL FUNDS	1001098

OFFICE OF THE DEPUTY M	202251	HG0.LOCALF.LOCAL FUNDS	1001098
DEPUTY CHIEF OF STAFF	401015	HG0.PX0HG0.PURCHASE/TRAVEL CARD - HG0	1000704
DEPUTY CHIEF OF STAFF	401015	HG0.PX0HG0.PURCHASE/TRAVEL CARD - HG0	1000704
OFFICE OF THE DEPUTY M	202251	HG0.LOCALF.LOCAL FUNDS	1000704
OFFICE OF THE DEPUTY M	202251	HG0.LOCALF.LOCAL FUNDS	1001098
OFFICE OF THE DEPUTY M	202251	HG0.LOCALF.LOCAL FUNDS	1001098
DEPUTY CHIEF OF STAFF	400503	HG0.I23HG0.FY23 TELECOM - INTERAGENCY I	1001098
DEPUTY CHIEF OF STAFF	202251	HG0.LOCALF.LOCAL FUNDS	1001098
OFFICE OF THE DEPUTY M	202251	HG0.LOCALF.LOCAL FUNDS	1001098
OFFICE OF THE DEPUTY M	202251	HG0.LOCALF.LOCAL FUNDS	1001098
DEPUTY CHIEF OF STAFF	202251	HG0.LOCALF.LOCAL FUNDS	1000704
OFFICE OF THE DEPUTY M	202251	HG0.LOCALF.LOCAL FUNDS	1000704
DEPUTY CHIEF OF STAFF	400502	HG0.500242.IT ASSESSMENT	1001098
OFFICE OF THE DEPUTY M	202251	HG0.LOCALF.LOCAL FUNDS	1000704

Award Description	Initial Budget	Adjustment Budget	Total Budget	Commitment
HG0.LOCALF.FY2025	\$0.00	\$0.00	\$0.00	\$0.00
HG0.LOCAL.FUND..FY202	\$60,351.51	\$0.00	\$60,351.51	\$0.00
HG0.LOCAL.FUND..FY202	\$35,806.85	\$0.00	\$35,806.85	\$0.00
HG0.LOCAL.FUND..FY202	\$0.00	\$0.00	\$0.00	\$0.00
HG0.LOCAL.FUND..FY202	\$0.00	\$0.00	\$0.00	\$0.00
NO AWARD	\$0.00	\$0.00	\$0.00	\$0.00
HG0.LOCALF.FY2025	\$0.00	\$0.00	\$0.00	\$0.00
HG0.LOCALF.FY2025	\$0.00	\$0.00	\$0.00	\$0.00
HG0.LOCAL.FUND..FY202	\$106,627.11	\$0.00	\$106,627.11	\$0.00
HG0.LOCAL.FUND..FY202	\$0.00	\$0.00	\$0.00	\$0.00
HG0.LOCAL.FUND..FY202	\$14,007.10	\$0.00	\$14,007.10	\$0.00
HG0.LOCAL.FUND..FY202	\$12,227.62	\$0.00	\$12,227.62	\$0.00
HG0.LOCAL.FUND..FY202	\$0.00	\$0.00	\$0.00	\$0.00
HG0.LOCALF.FY2025	\$10,000.00	\$0.00	\$10,000.00	\$0.00
HG0.LOCALF.FY2025	\$10,800.00	\$0.00	\$10,800.00	\$0.00
HG0.LOCALF.FY2025	\$0.00	\$0.00	\$0.00	\$0.00
HG0.LOCAL.FUND..FY202	\$5,000.00	\$0.00	\$5,000.00	\$0.00
HG0.LOCAL.FUND..FY202	\$2,406.40	\$0.00	\$2,406.40	\$0.00
HG0.LOCAL.FUND..FY202	\$19,200.00	\$0.00	\$19,200.00	\$0.00
HG0.LOCAL.FUND..FY202	\$0.00	\$0.00	\$0.00	\$0.00
HG0.LOCALF.FY2024.FY2	\$6,000.00	\$0.00	\$6,000.00	\$0.00
HG0.LOCALF.FY2025	\$0.00	\$0.00	\$0.00	\$0.00
HG0.LOCALF.FY2025	\$2,100.00	\$0.00	\$2,100.00	\$0.00
HG0.LOCALF.FY2025	\$0.00	\$0.00	\$0.00	\$0.00
HG0.LOCALF.FY2025	\$0.00	\$0.00	\$0.00	\$0.00
HG0.LOCAL.FUND..FY202	\$3,900.00	\$0.00	\$3,900.00	\$0.00
HG0.LOCAL.FUND..FY202	\$0.00	\$0.00	\$0.00	\$0.00

HG0.LOCAL.FUND..FY202	\$0.00	\$0.00	\$0.00	\$0.00
HG0.LOCALF.FY2025	\$774.51	\$0.00	\$774.51	\$0.00
HG0.LOCALF.FY2025	\$15,000.00	\$0.00	\$15,000.00	\$0.00
HG0.LOCALF.FY2025	\$0.00	\$0.00	\$0.00	\$0.00
HG0.LOCAL.FUND..FY202	\$1,848,649.05	\$0.00	\$1,848,649.05	\$0.00
HG0.LOCAL.FUND..FY202	\$346,660.28	\$0.00	\$346,660.28	\$0.00
HG0.LOCAL.FUND..FY202	\$3,583.36	\$0.00	\$3,583.36	\$0.00
HG0.LOCAL.FUND..FY202	\$437.94	\$0.00	\$437.94	\$0.00
HG0.LOCAL.FUND..FY202	\$0.00	\$0.00	\$0.00	\$0.00
HG0.LOCAL.FUND..FY202	\$0.00	\$0.00	\$0.00	\$0.00
HG0.LOCALF.FY2025	\$0.00	\$0.00	\$0.00	\$0.00
HG0.LOCALF.FY2025	\$0.00	\$0.00	\$0.00	\$0.00
HG0.LOCAL.FUND..FY202	\$6,689.16	\$0.00	\$6,689.16	\$0.00
HG0.LOCALF.FY2025	\$0.00	\$0.00	\$0.00	\$0.00
Total:	\$2,510,220.89	\$0.00	\$2,510,220.89	\$0.00

Obligation	Expenditure	Budget Reservations	Available Budget
\$0.00	\$308.57	\$0.00	-\$308.57
\$0.00	\$1,933.44	\$0.00	\$58,418.07
\$0.00	\$0.00	\$0.00	\$35,806.85
\$0.00	\$1,828.48	\$0.00	-\$1,828.48
\$0.00	\$458.93	\$0.00	-\$458.93
\$0.00	\$5,091.97	\$0.00	-\$5,091.97
\$0.00	\$16.46	\$0.00	-\$16.46
\$0.00	\$9.43	\$0.00	-\$9.43
\$0.00	\$0.00	\$0.00	\$106,627.11
\$0.00	\$494.86	\$0.00	-\$494.86
\$0.00	\$0.00	\$0.00	\$14,007.10
\$0.00	\$2,150.00	\$0.00	\$10,077.62
\$0.00	\$214.17	\$0.00	-\$214.17
\$0.00	\$2,585.00	\$0.00	\$7,415.00
\$0.00	\$0.00	\$0.00	\$10,800.00
\$0.00	\$2.34	\$0.00	-\$2.34
\$0.00	\$0.00	\$0.00	\$5,000.00
\$0.00	\$0.00	\$0.00	\$2,406.40
\$0.00	\$0.00	\$0.00	\$19,200.00
\$0.00	\$5,519.48	\$0.00	-\$5,519.48
\$0.00	\$0.00	\$0.00	\$6,000.00
\$0.00	\$4,038.51	\$0.00	-\$4,038.51
\$0.00	\$0.00	\$0.00	\$2,100.00
\$0.00	\$0.00	\$0.00	\$0.00
\$0.00	\$55.79	\$0.00	-\$55.79
\$0.00	\$0.00	\$0.00	\$3,900.00
\$0.00	\$20,358.78	\$0.00	-\$20,358.78

\$0.00	\$22,674.46	\$0.00	-\$22,674.46
\$0.00	\$0.00	\$0.00	\$774.51
\$0.00	\$0.00	\$0.00	\$15,000.00
\$0.00	\$6.91	\$0.00	-\$6.91
\$0.00	\$374,685.54	\$0.00	\$1,473,963.51
\$0.00	\$0.00	\$0.00	\$346,660.28
\$0.00	\$0.00	\$0.00	\$3,583.36
\$0.00	\$0.00	\$0.00	\$437.94
\$0.00	\$41,375.33	\$0.00	-\$41,375.33
\$0.00	\$18,268.24	\$0.00	-\$18,268.24
\$0.00	\$0.00	\$0.00	\$0.00
\$0.00	\$238.57	\$0.00	-\$238.57
\$0.00	\$0.00	\$0.00	\$6,689.16
\$0.00	\$201.93	\$0.00	-\$201.93
\$0.00	\$502,517.19	\$0.00	\$2,007,703.70

Appropriated Fund	Appropriated Fund Description	Account Group (Parent Level 1)	Account
1010	LOCAL FUND	701100C	7011001
		701100C Total	
		701200C	7012003
		701200C Total	
		701300C	7013007
		701300C Total	
		701400C	7014002
		7014003	
		7014008	
		7014009	
		7014015	
		7014016	
		7014019	
		7014020	
		7014022	
		701400C Total	
		701500C	7015001
		701500C Total	
		711100C	7111002
		7111011	
		711100C Total	
		712100C	7121009
		712100C Total	
		713100C	7131002
		7131003	
		7131005	
		7131009	
		7131011	
		713100C Total	
		713200C	7132001
		7132002	
		713200C Total	
		715200C	7152001
		715200C Total	
		717100C	7171003
		7171005	
		717100C Total	
	LOCAL FUND Total		
1010 Total			
Grand Total			

Data		
Sum of FY25 Total Budget	Sum of FY25 Expenditure	Sum of FY25 Available Budget
\$1,724,766.08	\$1,382,513.62	\$342,252.46
\$1,724,766.08	\$1,382,513.62	\$342,252.46
\$105,187.98	\$29,625.17	\$75,562.81
\$105,187.98	\$29,625.17	\$75,562.81
\$0.00	\$20,573.32	(\$20,573.32)
\$0.00	\$480.17	(\$480.17)
\$0.00	\$21,053.49	(\$21,053.49)
\$0.00	\$809.70	(\$809.70)
\$0.00	\$123,732.34	(\$123,732.34)
\$316,582.06	\$0.00	\$316,582.06
\$0.00	\$81,537.34	(\$81,537.34)
\$0.00	\$1,528.06	(\$1,528.06)
\$0.00	\$1,804.56	(\$1,804.56)
\$0.00	\$20,635.14	(\$20,635.14)
\$0.00	\$68,881.20	(\$68,881.20)
\$0.00	\$5,229.16	(\$5,229.16)
\$316,582.06	\$304,157.50	\$12,424.56
\$0.00	\$463.73	(\$463.73)
\$0.00	\$463.73	(\$463.73)
\$10,000.00	\$107.52	\$9,892.48
\$6,000.00	\$1,504.00	\$4,496.00
\$16,000.00	\$1,611.52	\$14,388.48
\$17,052.82	\$26,930.62	(\$9,877.80)
\$17,052.82	\$26,930.62	(\$9,877.80)
\$774.51	\$0.00	\$774.51
\$20,000.00	\$0.00	\$20,000.00
\$28,732.89	\$16,066.44	\$12,666.45
\$124,345.00	\$12,377.63	\$111,967.37
\$0.00	\$11,127.16	(\$11,127.16)
\$173,852.40	\$39,571.23	\$134,281.17
\$13,879.98	\$0.00	\$13,879.98
\$4,337.84	\$4,337.84	\$0.00
\$18,217.82	\$4,337.84	\$13,879.98
\$0.00	\$0.00	\$0.00
\$0.00	\$0.00	\$0.00
\$24,437.94	\$0.00	\$24,437.94
\$6,000.00	\$5,998.78	\$1.22
\$30,437.94	\$5,998.78	\$24,439.16
\$2,402,097.10	\$1,816,263.50	\$585,833.60
\$2,402,097.10	\$1,816,263.50	\$585,833.60
\$2,402,097.10	\$1,816,263.50	\$585,833.60

Sum of FY26 Total Budget	Sum of FY26 Expenditure	Sum of FY26 Available Budget
\$1,848,649.05	\$378,724.05	\$1,469,925.00
\$1,848,649.05	\$378,724.05	\$1,469,925.00
\$106,627.11	\$0.00	\$106,627.11
\$106,627.11	\$0.00	\$106,627.11
\$0.00	\$22,674.46	(\$22,674.46)
\$0.00	\$22,674.46	(\$22,674.46)
\$0.00	\$216.51	(\$216.51)
\$0.00	\$41,683.90	(\$41,683.90)
\$346,660.28	\$0.00	\$346,660.28
\$0.00	\$20,597.35	(\$20,597.35)
\$0.00	\$465.84	(\$465.84)
\$0.00	\$504.29	(\$504.29)
\$0.00	\$5,575.27	(\$5,575.27)
\$0.00	\$18,470.17	(\$18,470.17)
\$0.00	\$1,844.94	(\$1,844.94)
\$346,660.28	\$89,358.27	\$257,302.01
\$10,000.00	\$2,585.00	\$7,415.00
\$6,000.00	\$0.00	\$6,000.00
\$16,000.00	\$2,585.00	\$13,415.00
\$20,696.26	\$0.00	\$20,696.26
\$20,696.26	\$0.00	\$20,696.26
\$774.51	\$0.00	\$774.51
\$20,000.00	\$0.00	\$20,000.00
\$35,806.85	\$0.00	\$35,806.85
\$60,351.51	\$1,933.44	\$58,418.07
\$116,932.87	\$1,933.44	\$114,999.43
\$15,810.98	\$2,150.00	\$13,660.98
\$2,406.40	\$0.00	\$2,406.40
\$18,217.38	\$2,150.00	\$16,067.38
\$0.00	\$5,091.97	(\$5,091.97)
\$0.00	\$5,091.97	(\$5,091.97)
\$30,000.00	\$0.00	\$30,000.00
\$6,437.94	\$0.00	\$6,437.94
\$36,437.94	\$0.00	\$36,437.94
\$2,510,220.89	\$502,517.19	\$2,007,703.70
\$2,510,220.89	\$502,517.19	\$2,007,703.70
\$2,510,220.89	\$502,517.19	\$2,007,703.70

Program (Parent Level 2 (All)

Program (Parent Level 1)	Appropriated Fund	Appropriated Fund Description	Account Group
AGENCY OVERSIGHT AND SUPPORT SERVICES	1010	LOCAL FUND	711100C
			711100C Total
			712100C
			712100C Total
			713100C
			713100C Total
			713200C
			713200C Total
			717100C
			717100C Total
LOCAL FUND Total			
1010 Total			
AGENCY OVERSIGHT AND SUPPORT SERVICES Total			
EXECUTIVE ADMINISTRATION	1010	LOCAL FUND	701100C
			701100C Total
			701200C
			701200C Total
			701300C
			701300C Total
			701400C
			701400C Total
			701500C
			701500C Total
		713100C	
		713100C Total	
		715200C	
		715200C Total	

EXECUTIVE ADMINISTRATION	1010	LOCAL FUND Total	
1010 Total			
EXECUTIVE ADMINISTRATION Total			
NO PROGRAM	1010	LOCAL FUND	715200C
		715200C Tot	
	LOCAL FUND Total		
1010 Total			
NO PROGRAM Total			
P-CARD CLEARING	1010	LOCAL FUND	715200C
		715200C Tot	
	LOCAL FUND Total		
1010 Total			
P-CARD CLEARING Total			
Grand Total			

	Data		
Account	Sum of FY25 Total Budget	Sum of FY25 Expenditure	Sum of FY25 Available Budget
7111002	\$10,000.00	\$107.52	\$9,892.48
7111011	\$6,000.00	\$1,504.00	\$4,496.00
al	\$16,000.00	\$1,611.52	\$14,388.48
7121009	\$17,052.82	\$26,930.62	(\$9,877.80)
al	\$17,052.82	\$26,930.62	(\$9,877.80)
7131002	\$774.51	\$0.00	\$774.51
7131003	\$20,000.00	\$0.00	\$20,000.00
7131005	\$28,732.89	\$16,066.44	\$12,666.45
7131009	\$124,345.00	\$12,377.63	\$111,967.37
7131011	\$0.00	\$11,127.16	(\$11,127.16)
al	\$173,852.40	\$39,571.23	\$134,281.17
7132001	\$13,879.98	\$0.00	\$13,879.98
7132002	\$4,337.84	\$4,337.84	\$0.00
al	\$18,217.82	\$4,337.84	\$13,879.98
7171003	\$24,437.94	\$0.00	\$24,437.94
7171005	\$6,000.00	\$5,998.78	\$1.22
al	\$30,437.94	\$5,998.78	\$24,439.16
	\$255,560.98	\$78,449.99	\$177,110.99
	\$255,560.98	\$78,449.99	\$177,110.99
	\$255,560.98	\$78,449.99	\$177,110.99
7011001	\$1,724,766.08	\$1,382,513.62	\$342,252.46
al	\$1,724,766.08	\$1,382,513.62	\$342,252.46
7012003	\$105,187.98	\$29,625.17	\$75,562.81
al	\$105,187.98	\$29,625.17	\$75,562.81
7013007	\$0.00	\$20,573.32	(\$20,573.32)
7013008	\$0.00	\$480.17	(\$480.17)
al	\$0.00	\$21,053.49	(\$21,053.49)
7014002	\$0.00	\$809.70	(\$809.70)
7014003	\$0.00	\$123,732.34	(\$123,732.34)
7014008	\$316,582.06	\$0.00	\$316,582.06
7014009	\$0.00	\$81,537.34	(\$81,537.34)
7014015	\$0.00	\$1,528.06	(\$1,528.06)
7014016	\$0.00	\$1,804.56	(\$1,804.56)
7014019	\$0.00	\$20,635.14	(\$20,635.14)
7014020	\$0.00	\$68,881.20	(\$68,881.20)
7014022	\$0.00	\$5,229.16	(\$5,229.16)
al	\$316,582.06	\$304,157.50	\$12,424.56
7015001	\$0.00	\$463.73	(\$463.73)
al	\$0.00	\$463.73	(\$463.73)
7131009	\$0.00	\$0.00	\$0.00
al	\$0.00	\$0.00	\$0.00
7152001	\$0.00	\$1,887.57	(\$1,887.57)
al	\$0.00	\$1,887.57	(\$1,887.57)

	\$2,146,536.12	\$1,739,701.08	\$406,835.04
	\$2,146,536.12	\$1,739,701.08	\$406,835.04
	\$2,146,536.12	\$1,739,701.08	\$406,835.04
7152001	\$0.00	(\$1,887.57)	\$1,887.57
al	\$0.00	(\$1,887.57)	\$1,887.57
	\$0.00	(\$1,887.57)	\$1,887.57
	\$0.00	(\$1,887.57)	\$1,887.57
	\$0.00	(\$1,887.57)	\$1,887.57
7152001	\$0.00	\$0.00	\$0.00
al	\$0.00	\$0.00	\$0.00
	\$0.00	\$0.00	\$0.00
	\$0.00	\$0.00	\$0.00
	\$0.00	\$0.00	\$0.00
	\$2,402,097.10	\$1,816,263.50	\$585,833.60

\$2,301,936.44	\$490,756.78	\$1,811,179.66
\$2,301,936.44	\$490,756.78	\$1,811,179.66
\$2,301,936.44	\$490,756.78	\$1,811,179.66
\$0.00	\$5,091.97	(\$5,091.97)
\$0.00	\$5,091.97	(\$5,091.97)
\$0.00	\$5,091.97	(\$5,091.97)
\$0.00	\$5,091.97	(\$5,091.97)
\$0.00	\$5,091.97	(\$5,091.97)
\$2,510,220.89	\$502,517.19	\$2,007,703.70

Program (Parent Level 2 (All))

Cost Center (Parent Level)	Appropriated Fund	Appropriated Fund Description	Account Group
AGENCY FINANCIAL OPERATIONS DEPARTMENT	1010	LOCAL FUND	715200C
			715200C Total
		LOCAL FUND Total	
	1010 Total		
AGENCY FINANCIAL OPERATIONS DEPARTMENT Total			
CHIEF OF STAFF ADMINISTRATIVE OFFICE	1010	LOCAL FUND	711100C
			711100C Total
			712100C
			712100C Total
			713100C
			713100C Total
			713200C
		713200C Total	
		717100C	
		717100C Total	
		LOCAL FUND Total	
1010 Total			
CHIEF OF STAFF ADMINISTRATIVE OFFICE Total			
NO COST CENTER	1010	LOCAL FUND	715200C
			715200C Total
		LOCAL FUND Total	
1010 Total			
NO COST CENTER Total			
OFFICE OF THE DEPUTY CHIEF OF STAFF	1010	LOCAL FUND	701100C
			701100C Total
			701200C
			701200C Total
			701300C
		701300C Total	
		701400C	

OFFICE OF THE DEPUTY MAYOR - DMHHS	1010	LOCAL FUND	701400C
			701400C Tot
			701500C
			701500C Tot
			713100C
			713100C Tot
			715200C
		715200C Tot	
		LOCAL FUND Total	
1010 Total			
OFFICE OF THE DEPUTY MAYOR - DMHHS Total			
Grand Total			

	Data		
Account	Sum of FY25 Total Budget	Sum of FY25 Expenditure	Sum of FY25 Available Budget
7152001	\$0.00	\$0.00	\$0.00
al	\$0.00	\$0.00	\$0.00
	\$0.00	\$0.00	\$0.00
	\$0.00	\$0.00	\$0.00
	\$0.00	\$0.00	\$0.00
7111002	\$10,000.00	\$107.52	\$9,892.48
7111011	\$6,000.00	\$1,504.00	\$4,496.00
al	\$16,000.00	\$1,611.52	\$14,388.48
7121009	\$17,052.82	\$26,930.62	(\$9,877.80)
al	\$17,052.82	\$26,930.62	(\$9,877.80)
7131002	\$774.51	\$0.00	\$774.51
7131003	\$20,000.00	\$0.00	\$20,000.00
7131005	\$28,732.89	\$16,066.44	\$12,666.45
7131009	\$124,345.00	\$12,377.63	\$111,967.37
7131011	\$0.00	\$11,127.16	(\$11,127.16)
al	\$173,852.40	\$39,571.23	\$134,281.17
7132001	\$13,879.98	\$0.00	\$13,879.98
7132002	\$4,337.84	\$4,337.84	\$0.00
al	\$18,217.82	\$4,337.84	\$13,879.98
7171003	\$24,437.94	\$0.00	\$24,437.94
7171005	\$6,000.00	\$5,998.78	\$1.22
al	\$30,437.94	\$5,998.78	\$24,439.16
	\$255,560.98	\$78,449.99	\$177,110.99
	\$255,560.98	\$78,449.99	\$177,110.99
	\$255,560.98	\$78,449.99	\$177,110.99
7152001	\$0.00	(\$1,887.57)	\$1,887.57
al	\$0.00	(\$1,887.57)	\$1,887.57
	\$0.00	(\$1,887.57)	\$1,887.57
	\$0.00	(\$1,887.57)	\$1,887.57
	\$0.00	(\$1,887.57)	\$1,887.57
7011001	\$1,724,766.08	\$1,382,513.62	\$342,252.46
al	\$1,724,766.08	\$1,382,513.62	\$342,252.46
7012003	\$105,187.98	\$29,625.17	\$75,562.81
al	\$105,187.98	\$29,625.17	\$75,562.81
7013007	\$0.00	\$20,573.32	(\$20,573.32)
7013008	\$0.00	\$480.17	(\$480.17)
al	\$0.00	\$21,053.49	(\$21,053.49)
7014002	\$0.00	\$809.70	(\$809.70)
7014003	\$0.00	\$123,732.34	(\$123,732.34)
7014008	\$316,582.06	\$0.00	\$316,582.06
7014009	\$0.00	\$81,537.34	(\$81,537.34)
7014015	\$0.00	\$1,528.06	(\$1,528.06)
7014016	\$0.00	\$1,804.56	(\$1,804.56)

7014019	\$0.00	\$20,635.14	(\$20,635.14)
7014020	\$0.00	\$68,881.20	(\$68,881.20)
7014022	\$0.00	\$5,229.16	(\$5,229.16)
al	\$316,582.06	\$304,157.50	\$12,424.56
7015001	\$0.00	\$463.73	(\$463.73)
al	\$0.00	\$463.73	(\$463.73)
7131009	\$0.00	\$0.00	\$0.00
al	\$0.00	\$0.00	\$0.00
7152001	\$0.00	\$1,887.57	(\$1,887.57)
al	\$0.00	\$1,887.57	(\$1,887.57)
	\$2,146,536.12	\$1,739,701.08	\$406,835.04
	\$2,146,536.12	\$1,739,701.08	\$406,835.04
	\$2,146,536.12	\$1,739,701.08	\$406,835.04
	\$2,402,097.10	\$1,816,263.50	\$585,833.60

Sum of FY26 Total Budget	Sum of FY26 Expenditure	Sum of FY26 Available Budget
\$0.00	\$5,091.97	(\$5,091.97)
\$0.00	\$5,091.97	(\$5,091.97)
\$0.00	\$5,091.97	(\$5,091.97)
\$0.00	\$5,091.97	(\$5,091.97)
\$0.00	\$5,091.97	(\$5,091.97)
\$10,000.00	\$2,585.00	\$7,415.00
\$6,000.00	\$0.00	\$6,000.00
\$16,000.00	\$2,585.00	\$13,415.00
\$20,696.26	\$0.00	\$20,696.26
\$20,696.26	\$0.00	\$20,696.26
\$774.51	\$0.00	\$774.51
\$20,000.00	\$0.00	\$20,000.00
\$35,806.85	\$0.00	\$35,806.85
\$60,351.51	\$1,933.44	\$58,418.07
\$116,932.87	\$1,933.44	\$114,999.43
\$15,810.98	\$2,150.00	\$13,660.98
\$2,406.40	\$0.00	\$2,406.40
\$18,217.38	\$2,150.00	\$16,067.38
\$30,000.00	\$0.00	\$30,000.00
\$6,437.94	\$0.00	\$6,437.94
\$36,437.94	\$0.00	\$36,437.94
\$208,284.45	\$6,668.44	\$201,616.01
\$208,284.45	\$6,668.44	\$201,616.01
\$208,284.45	\$6,668.44	\$201,616.01
\$1,848,649.05	\$378,724.05	\$1,469,925.00
\$1,848,649.05	\$378,724.05	\$1,469,925.00
\$106,627.11	\$0.00	\$106,627.11
\$106,627.11	\$0.00	\$106,627.11
\$0.00	\$22,674.46	(\$22,674.46)
\$0.00	\$22,674.46	(\$22,674.46)
\$0.00	\$216.51	(\$216.51)
\$0.00	\$41,683.90	(\$41,683.90)
\$346,660.28	\$0.00	\$346,660.28
\$0.00	\$20,597.35	(\$20,597.35)
\$0.00	\$465.84	(\$465.84)
\$0.00	\$504.29	(\$504.29)

\$0.00	\$5,575.27	(\$5,575.27)
\$0.00	\$18,470.17	(\$18,470.17)
\$0.00	\$1,844.94	(\$1,844.94)
\$346,660.28	\$89,358.27	\$257,302.01
\$2,301,936.44	\$490,756.78	\$1,811,179.66
\$2,301,936.44	\$490,756.78	\$1,811,179.66
\$2,301,936.44	\$490,756.78	\$1,811,179.66
\$2,510,220.89	\$502,517.19	\$2,007,703.70

DMHHS as the Seller

FY	Agency	Amount	MOU Purpose
2025	DHS	663,176	Outreach Services for DC Homeless Residents
2025	DHCF	98,205	Encampment Services and Outreach
2026	DHS	687,174	Outreach Services for DC Homeless Residents
2026	DHCF	106,605	Encampment Services and Outreach
Total		<u>1,555,160</u>	

DMHHS as the Buyer

FY	Agency	Amount	MOU Purpose
			Provide telecom, transportation, courier and
2025	EOM	6,000	associated general administrative services.
2025	OCTO	5,607	IT Assessment
2025	OCTO	4,338	IT Assessment
2025	OCTO	15,029	Telecom Assessment
2025	DPW	28,733	DPW Fleet Services
			Provide telecom, transportation, courier and
2026	EOM	6,000	associated general administrative services.
2026	OCTO	6,689	IT Assessment
2026	OCTO	2,406	IT Assessment
2026	OCTO	17,590	Telecom Assessment
2026	DPW	35,807	DPW Fleet Services
Total		<u>128,199.78</u>	



December 2, 2025

Ayanna Bennett, M.D.
Director
District of Columbia Department of Health
2201 Shannon Place SE
Washington, DC 20020

Dear Dr. Bennett:

I write to tell you that the Office of the District of Columbia Auditor (ODCA) is initiating a discretionary audit of DC Health's food establishment inspection program.

ODCA's mission is to support the Council of the District of Columbia by making sound recommendations that improve the effectiveness, efficiency, and accountability of the District government. Our audits and evaluations provide valuable insight regarding whether an agency's business practices are efficient, its policies and procedures are effective, its internal controls need to be improved, and its programs are delivering the intended results.

This audit will cover October 1, 2024, through September 30, 2025 (FY 2025). Our preliminary objectives are to determine if:

- DC Health properly conducted and documented all required food safety inspections.
- DC Health appropriately enforced all food safety inspection violations.

We expect to complete the audit in approximately 10 months. This timeline assumes that the scope of our audit remains consistent with the audit objectives, though we reserve the right to adjust the scope and/or timeline of our audit as we gather additional information. We will notify you promptly of any such changes.

The audit will include interviews with staff members and other stakeholders, and a review and analysis of applicable laws, rules, and regulations, policies and procedures, budget and expenditure reports, and program data and reports.

Auditor David McDaniels will lead our team on this engagement. Please designate a representative from your agency to act as a liaison to facilitate the flow of records and information and, as needed, coordinate access to the appropriate members of your staff. Please provide Mr. McDaniels with the name and contact information of the liaison by **Monday, December 8, 2025**. Mr. McDaniels can be reached at 914-588-0963 or david.mcdaniels@dc.gov.

We also would like to schedule an introductory meeting the week of **December 15, 2025**, at which you and your team will have an opportunity to meet the staff members conducting the audit and to discuss the purpose, process, and timeline. The audit team will address any concerns regarding the audit process and arrange for access to information systems and key personnel. Mr. McDaniels will work with your liaison to schedule that meeting.

In preparation for the meeting, we would appreciate receiving the information requested in the attached **Audit Information Request Form** by **Friday, December 12, 2025**. Please contact Mr. McDaniels with any questions about the information requested.

We look forward to working with you and your staff. Please do not hesitate to contact me at kathy.patterson@dc.gov or (202) 727-8982 if you have questions.

Thank you.

Sincerely yours,



Kathleen Patterson
District of Columbia Auditor

cc: Christina Henderson, Chair, D.C. Council Committee on Health
Carl Filler, DC Health
Elaine Block, DC Health
Betsy Cavendish, EOM



DC Health Food Establishment Inspections Audit Information Request Form

To help with ODCA's audit of the DC Health's food establishment inspection program, please send the following information to David McDaniels at david.mcdaniels@dc.gov by the close of business on **December 12, 2025**. Thank you.

1. Current or previous audits related to the audit objective, and any corrective actions implemented or underway.
2. Information on any investigations or legal proceedings that have been initiated or are in process with respect to DC Health's food establishment inspection program.
3. Policies and procedures, guides, and training materials in effect or created in FY 2025 related to food establishment inspections, to include the:
 - a. Development and implementation of the risk-based inspection schedule.
 - b. Assignment of food safety inspectors for each inspection type.
 - c. Maintenance and publication of inspection documentation.
 - d. Development of DC Health's inspection fee schedule and internal fine collection system referenced in FY 2024 Performance Oversight Testimony.
 - e. Violation enforcement process.
 - f. Foodborne infection and intoxication complaints follow up.
4. Organizational Chart for the Environmental Health Service and the Division of Food during FY 2025 as well as a schedule of staff assigned to conduct all food establishment inspections.
5. Information and data for FY 2025 per the DCMR Title 25a Chapter 44 Section 4407.4
 - a. Total number of licensed food establishments by category.
 - b. Number of yearly inspections by category.
 - c. Number of re-inspection by category.
 - d. Number of hearings.
 - e. Number of license suspensions.
 - f. Number of license revocations.
 - g. Number of foodborne illness complaints investigated.
 - h. Number of general complaints investigated.
 - i. Number of variances issued.
 - j. Total number of sanitarians.
6. Listing of all completed food establishment inspections by category conducted during FY 2025.
7. Copy of DC Health's FY 2025 risk-based inspection schedule.

8. Listing of any fines levied and payments collected during FY 2025, as well as a District Integrated Financial System report confirming the receipt of payments.